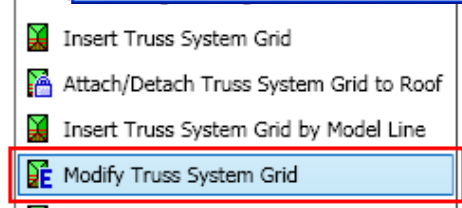
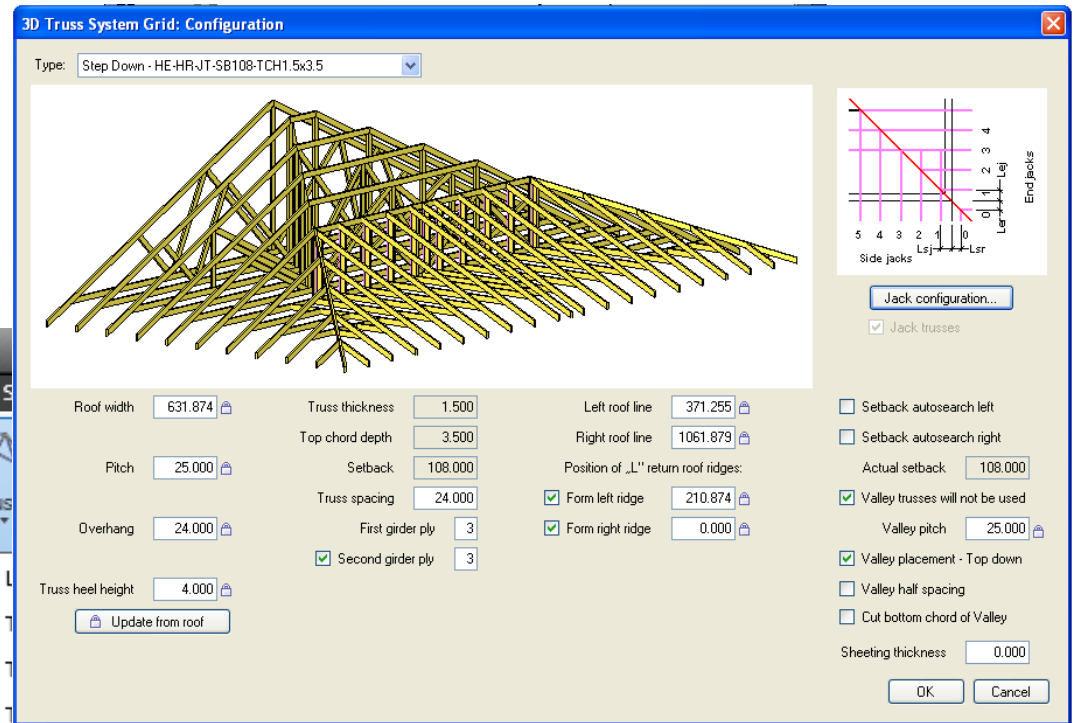
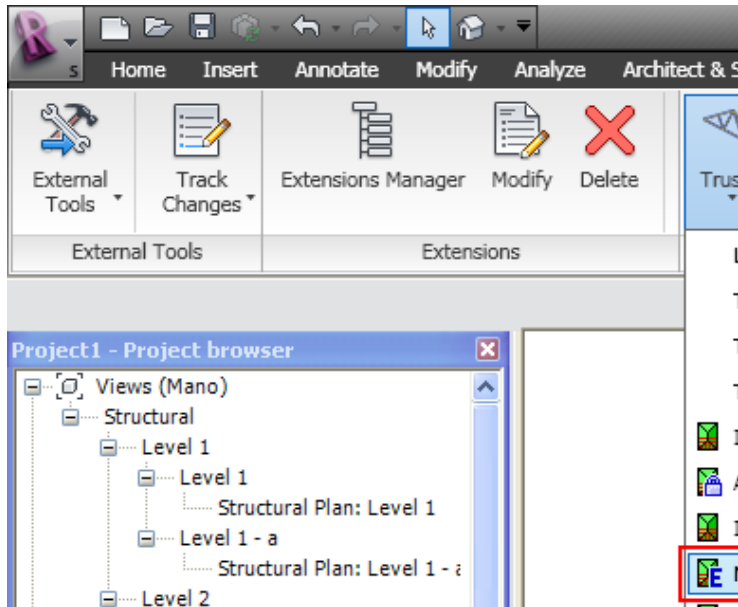


**Truss+ 2010**  
**Modify Truss System Grid**

Chapter Three

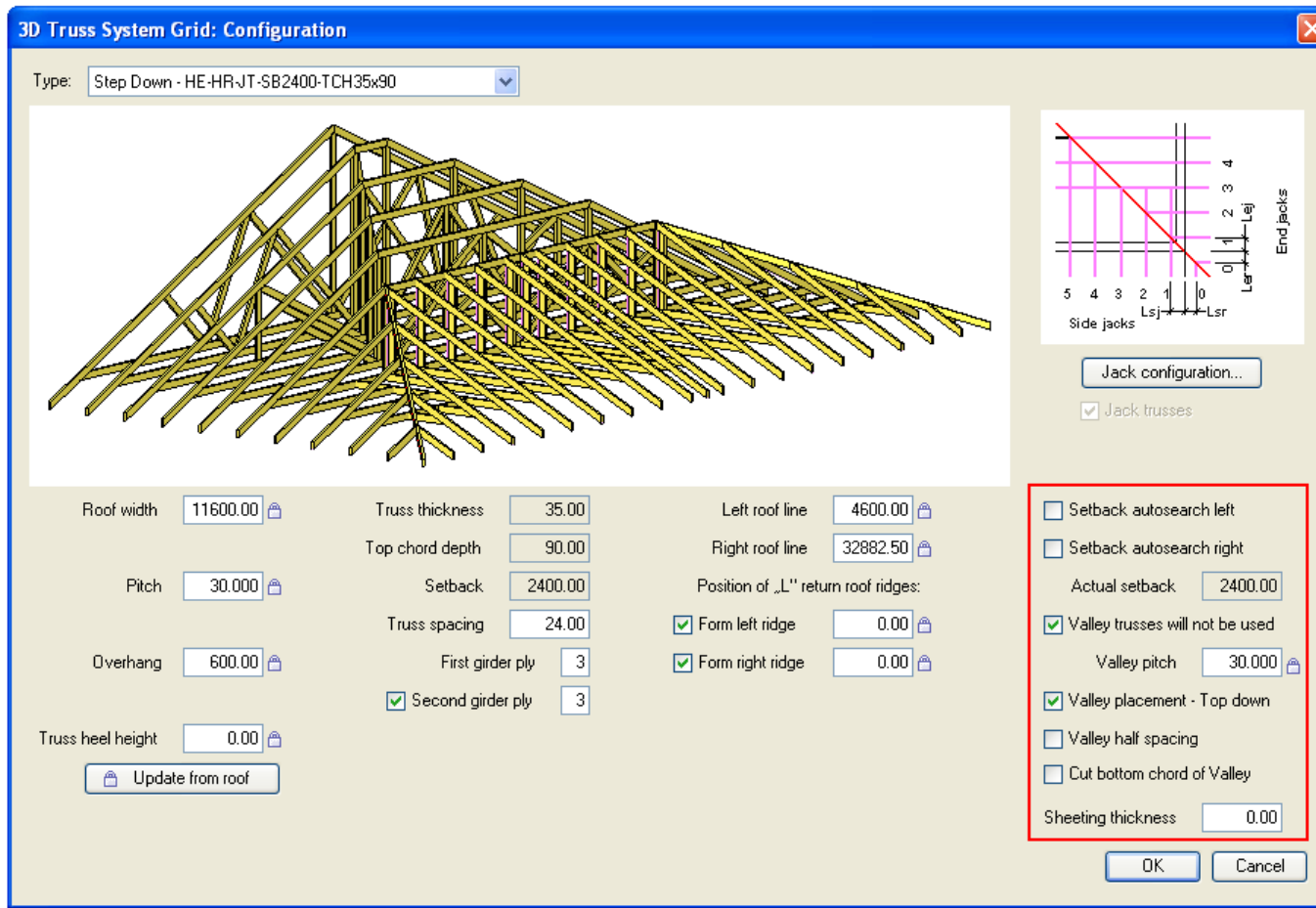
# Modify Truss System Grid

- Select a truss system grid.
- Choose *Modify Truss System Grid* directly from “Truss+” menu.



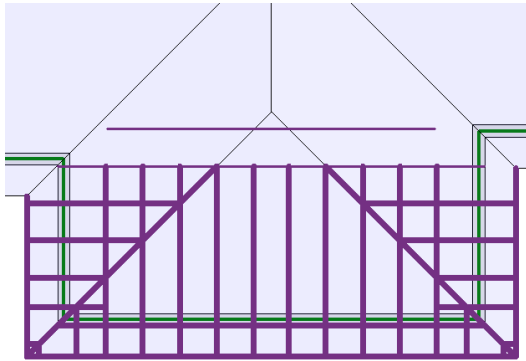
# Modify Truss System Grid

- Parameters for defining setback and other valley parameters

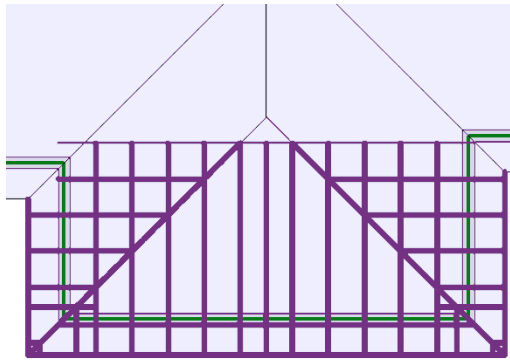


# Modify Truss System Grid

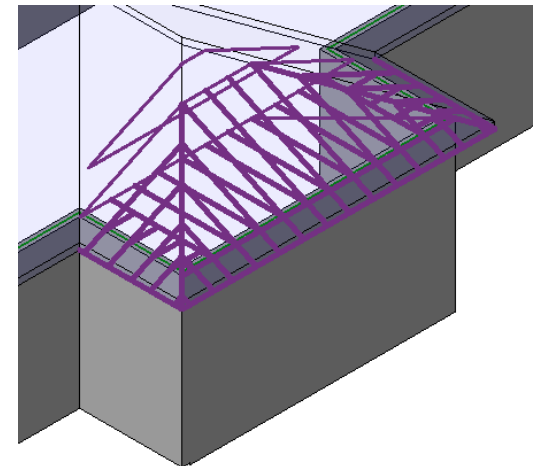
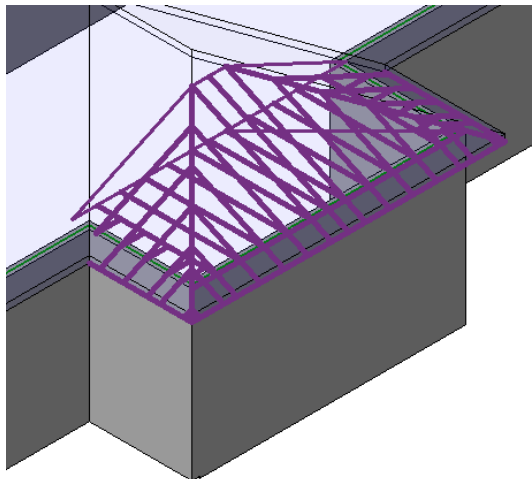
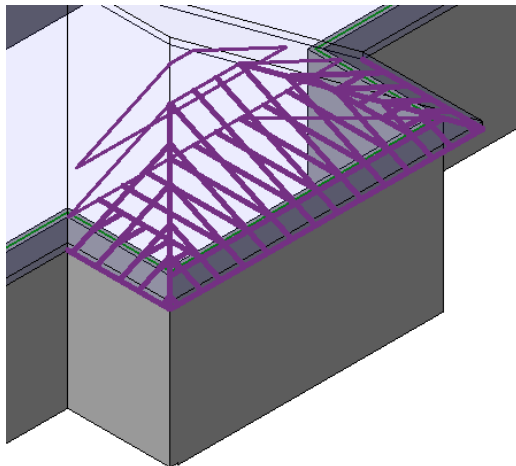
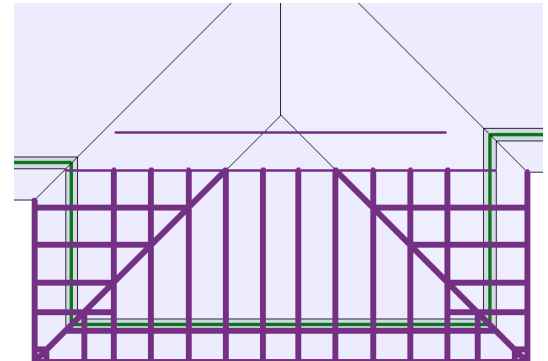
- Setback autosearch left
- Setback autosearch right



- Setback autosearch left
- Setback autosearch right



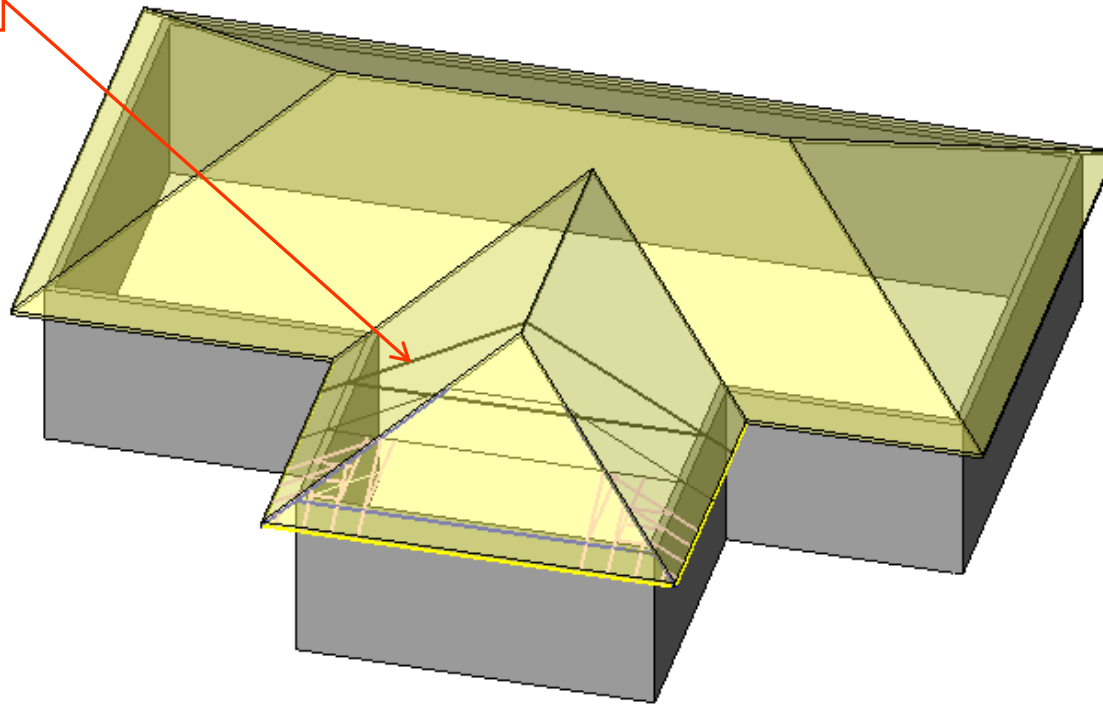
- Setback autosearch left
- Setback autosearch right



# Modify Truss System Grid

If Valley Set Grid needs to be inserted, switch Off the *Valley trusses will not be used* check box.

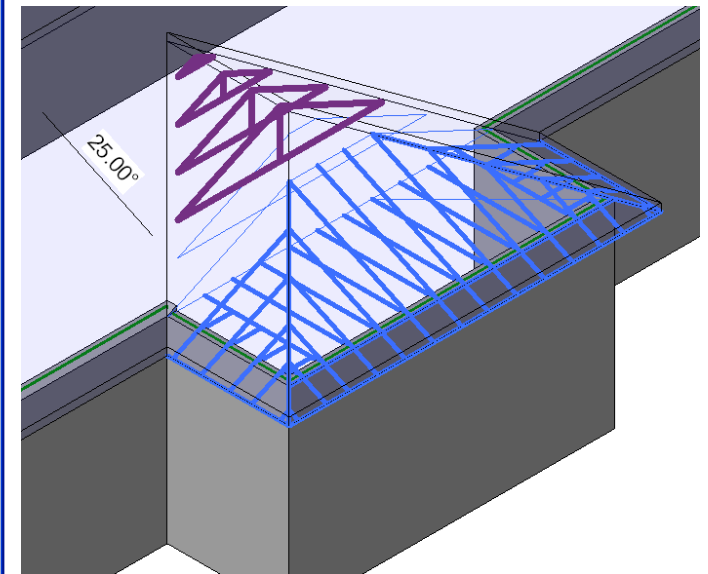
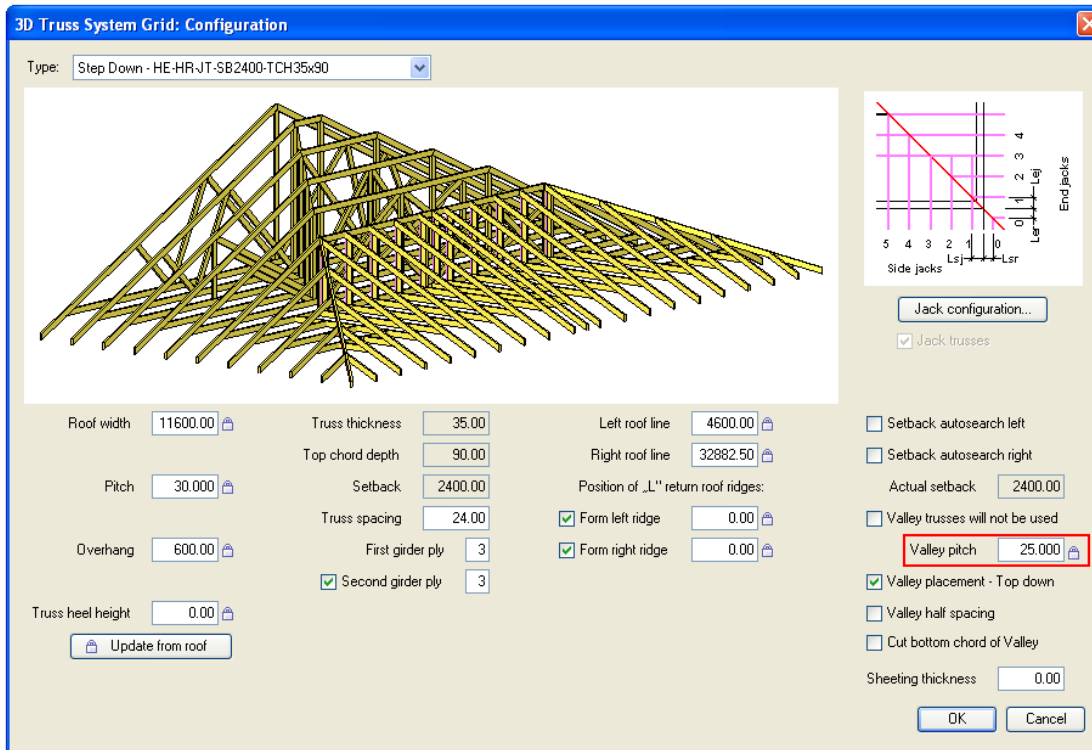
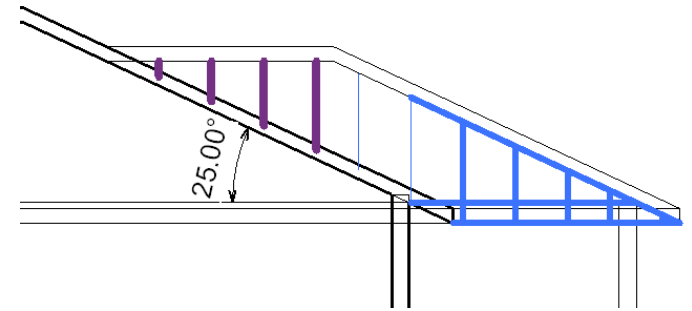
Valley trusses will not be used



# Modify Truss System Grid

- *Valley pitch*

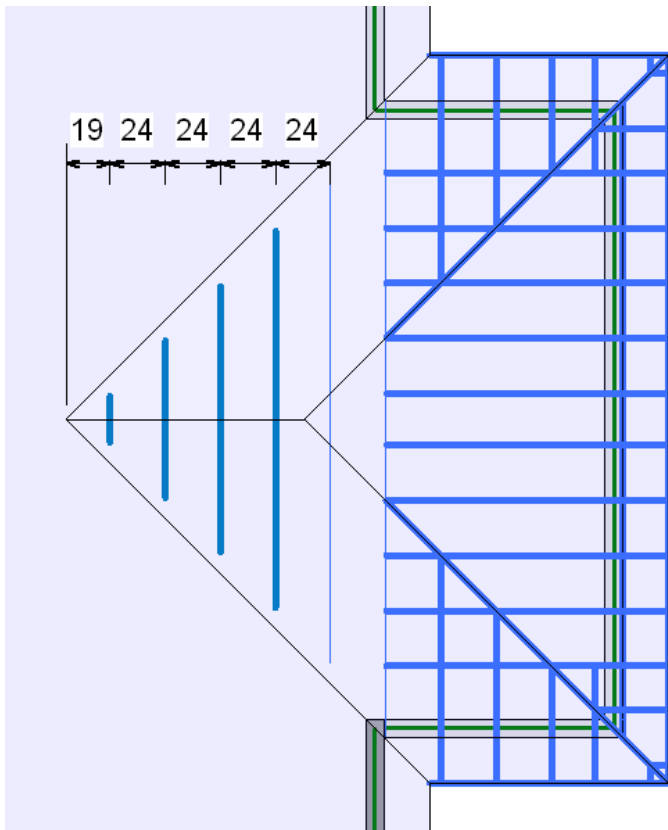
If there is a lock symbol near the value of parameter, it means that the truss system grid is attached to the roof (after updating grid from the roof, parameters will be updated automatically, depending on roof geometry).



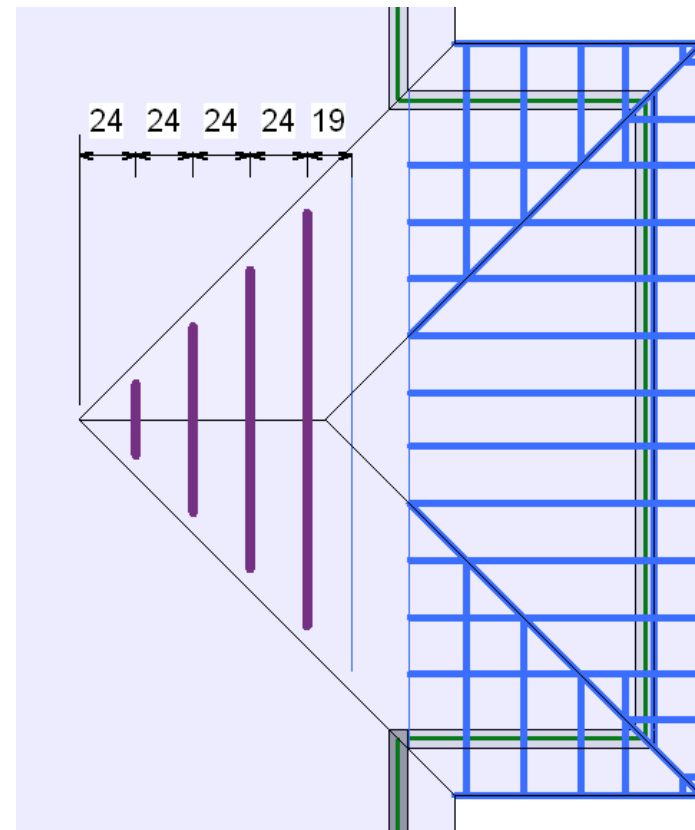
# Modify Truss System Grid

- Spacing is calculated from the bottom
- Spacing is calculated from the top

Valley placement - Top down

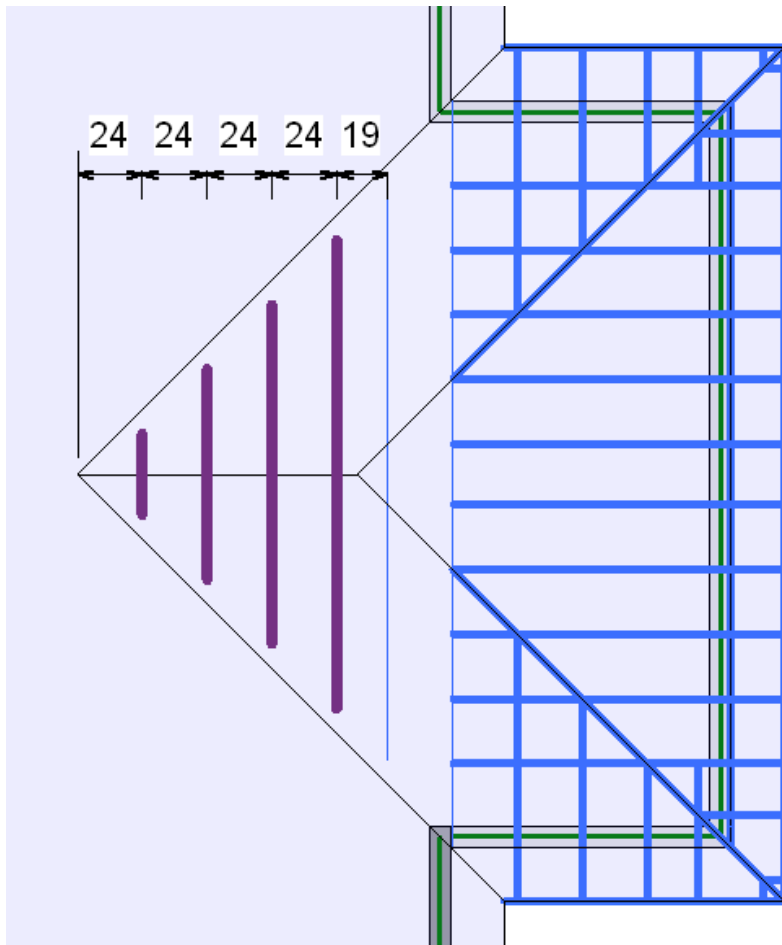


Valley placement - Top down

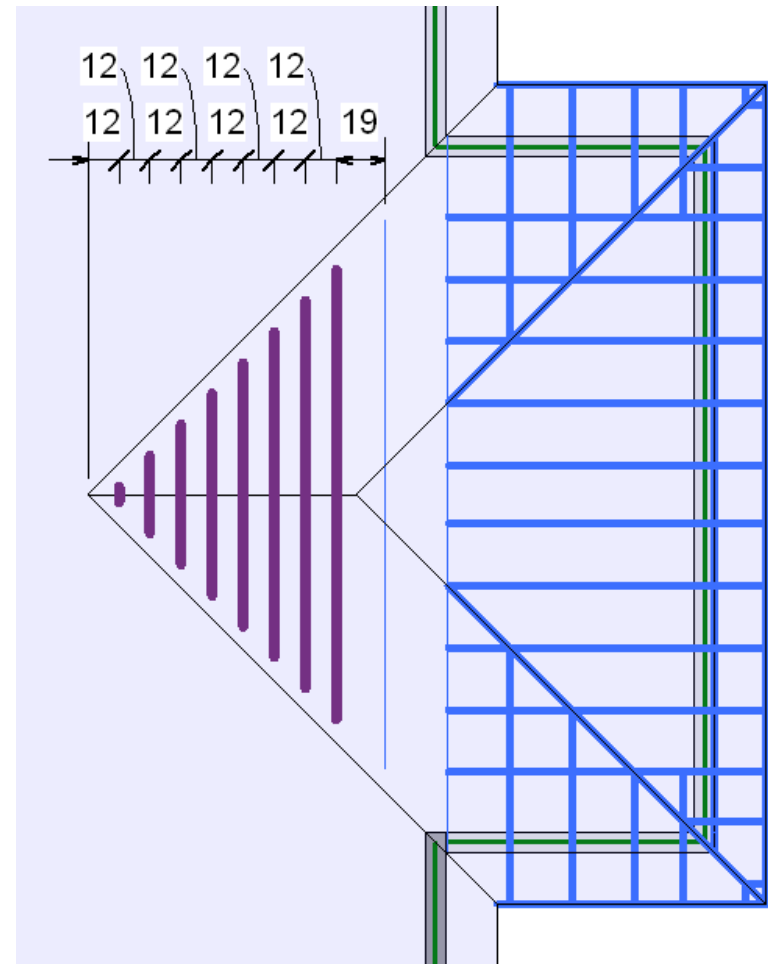


# Modify Truss System Grid

Valley half spacing



Valley half spacing

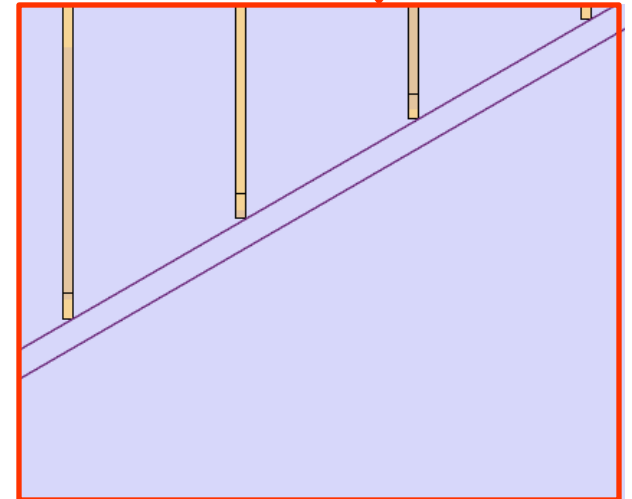
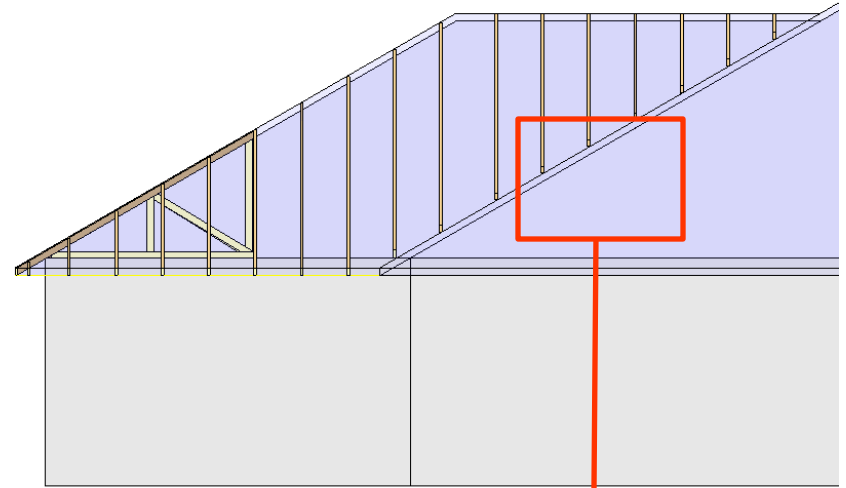
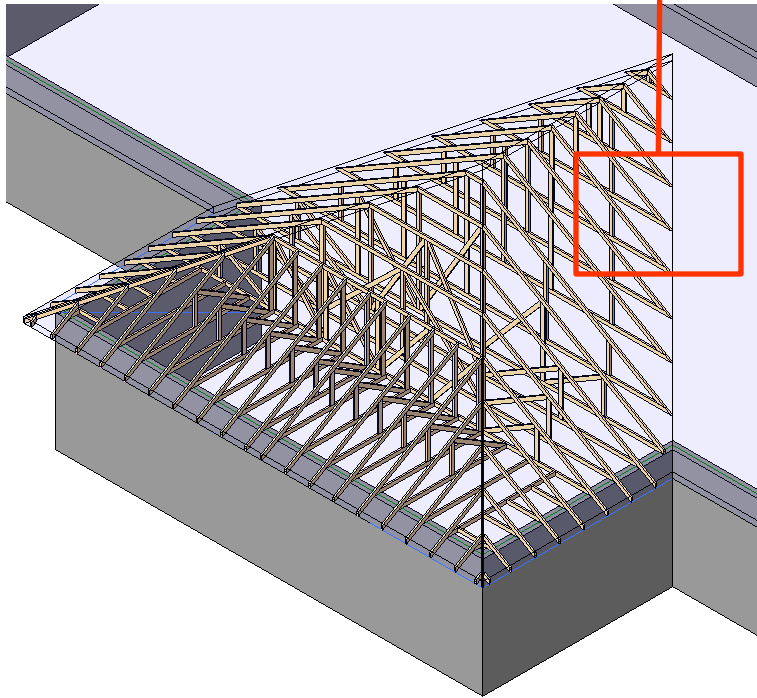
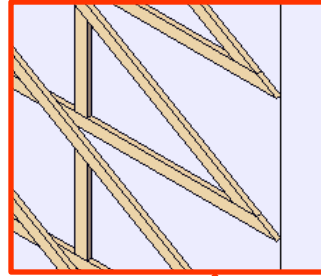




# Modify Truss System Grid

Cut bottom chord of Valley

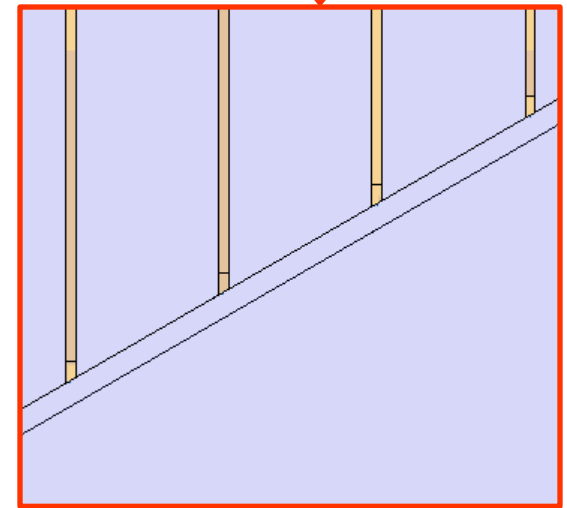
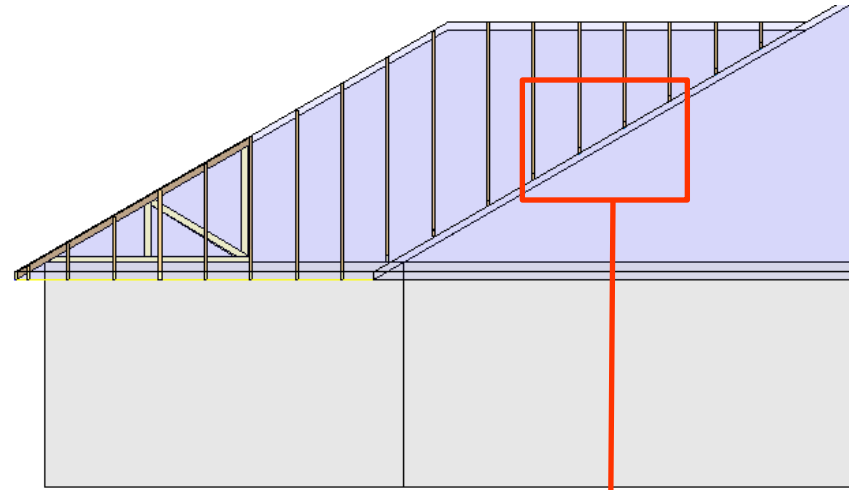
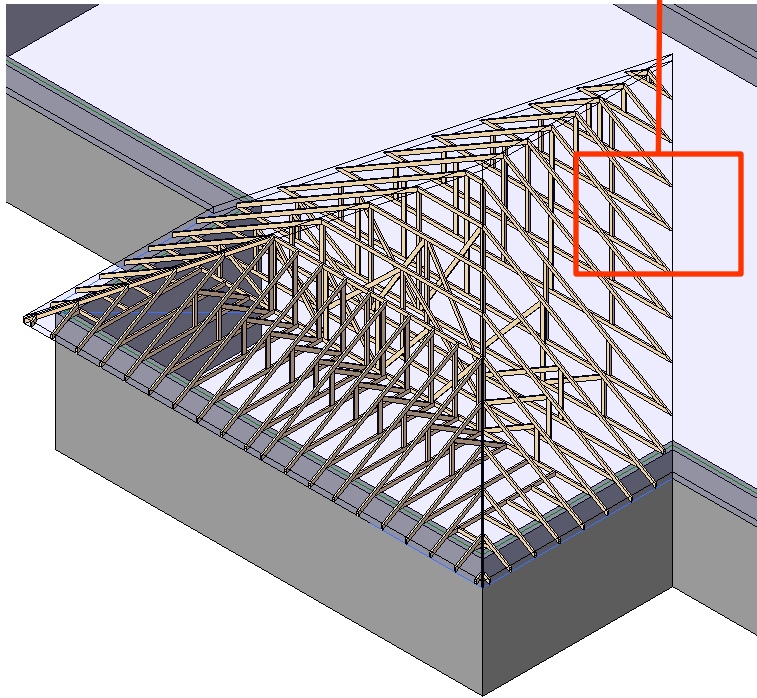
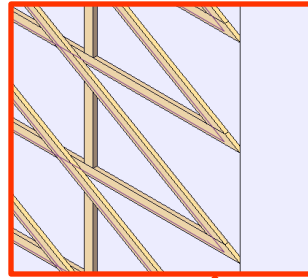
Sheeting thickness



# Modify Truss System Grid

Cut bottom chord of Valley

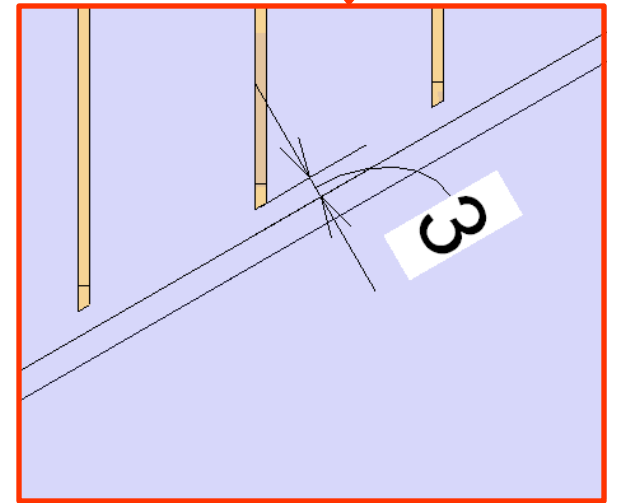
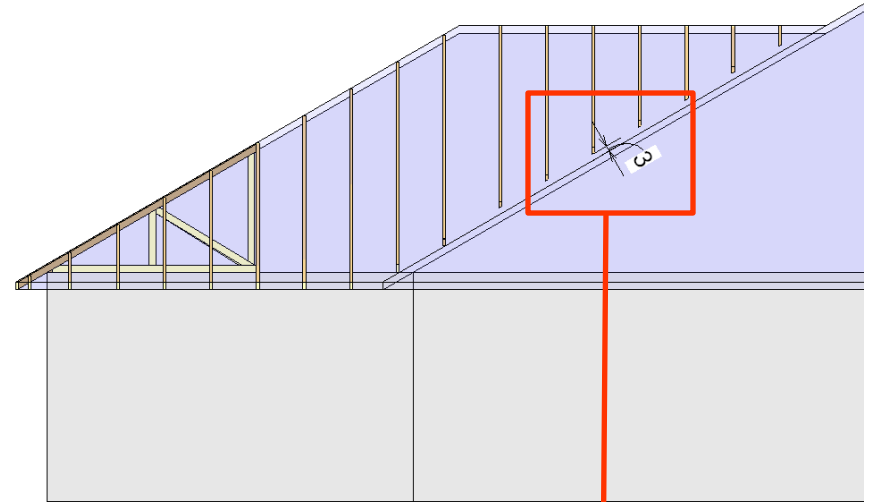
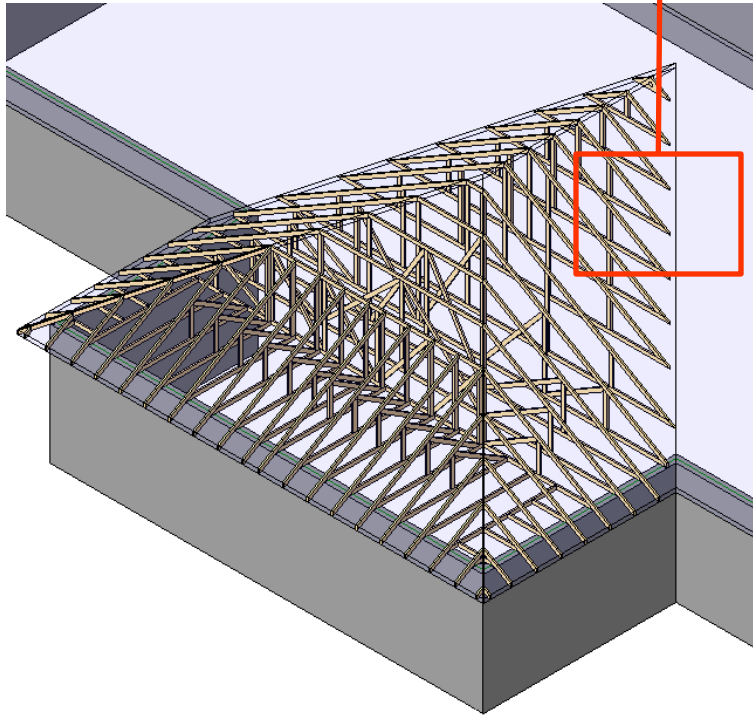
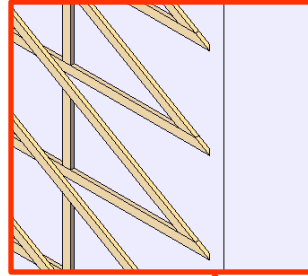
Sheeting thickness



# Modify Truss System Grid

Cut bottom chord of Valley

Sheeting thickness



# Increase your productivity !



AGA CAD Ltd.  
Zalgirio 112A, LT-09300 Vilnius,  
Lithuania  
Tel. +370 5 2398111  
Fax +370 5 2398113  
Email [info@aga-cad.lt](mailto:info@aga-cad.lt)  
[info@tools4revit.com](mailto:info@tools4revit.com)  
[www.tools4revit.com](http://www.tools4revit.com)