



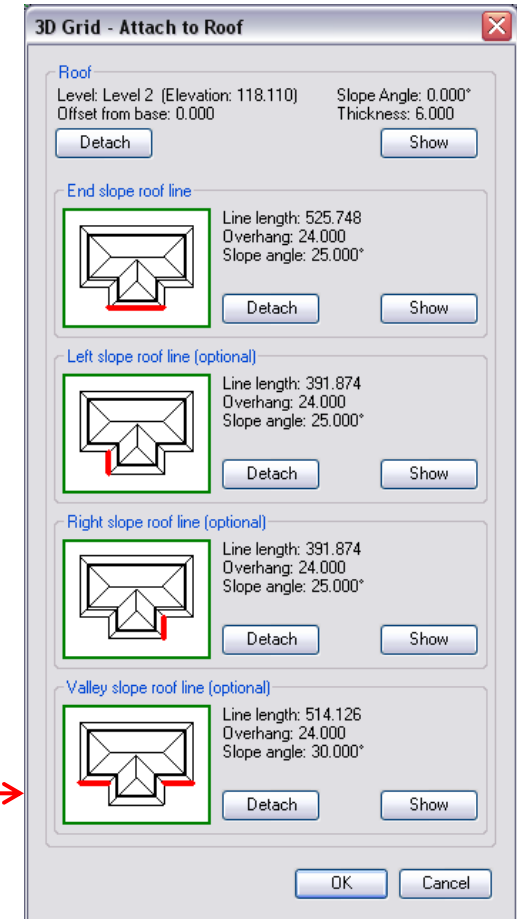
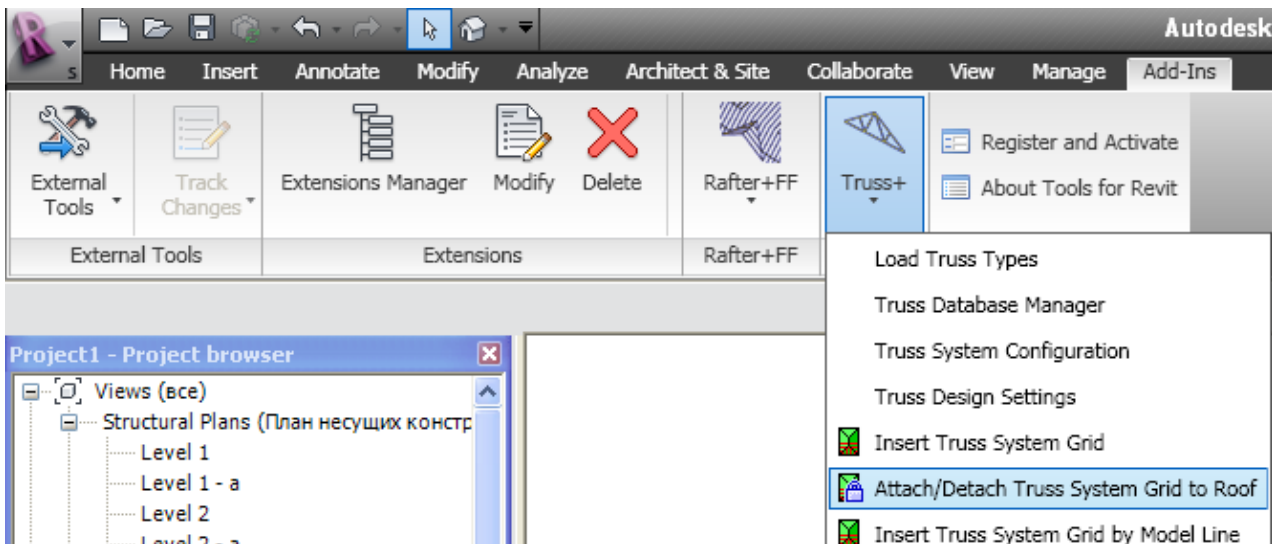
Truss+ 2010

Attach/Detach Truss System Grid to Roof



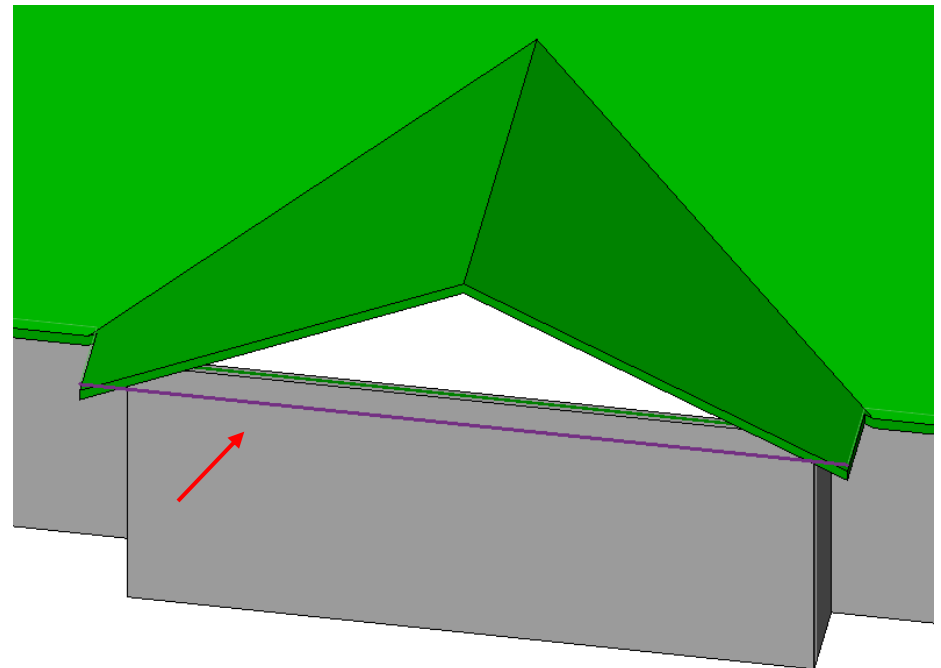
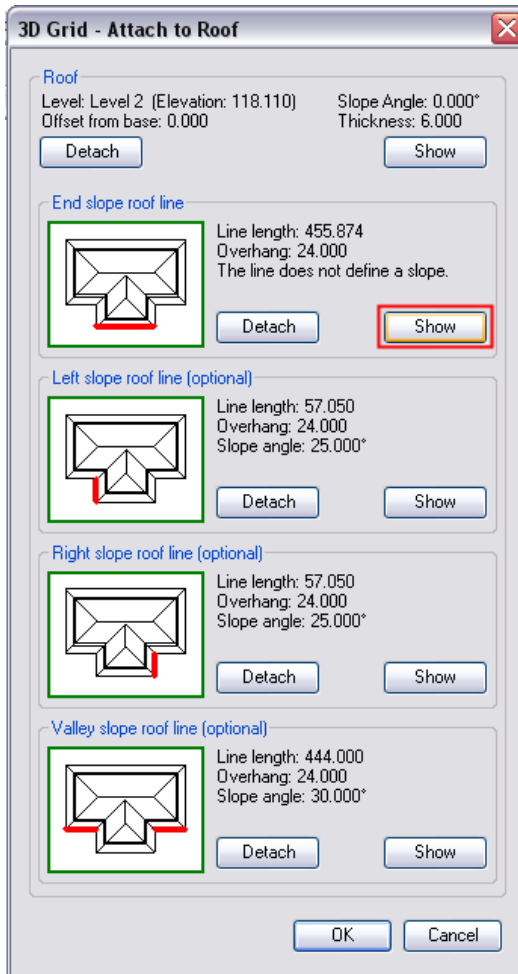
Attach/Detach Truss System Grid to Roof

- Select a truss system grid.
- Choose *Attach/detach truss system grid to roof* directly from “Truss+” menu.



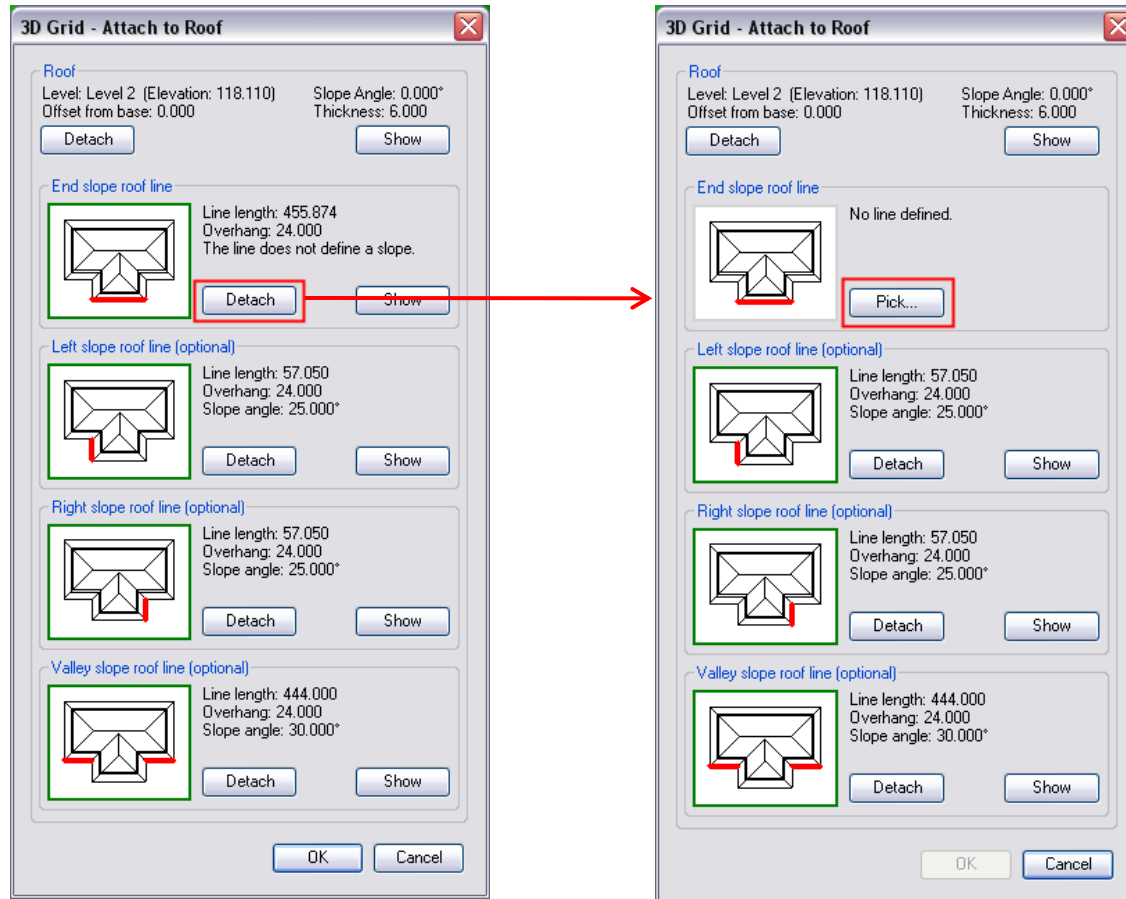
Attach/Detach Truss System Grid to Roof

- To see which roof line was selected, click *Show*.



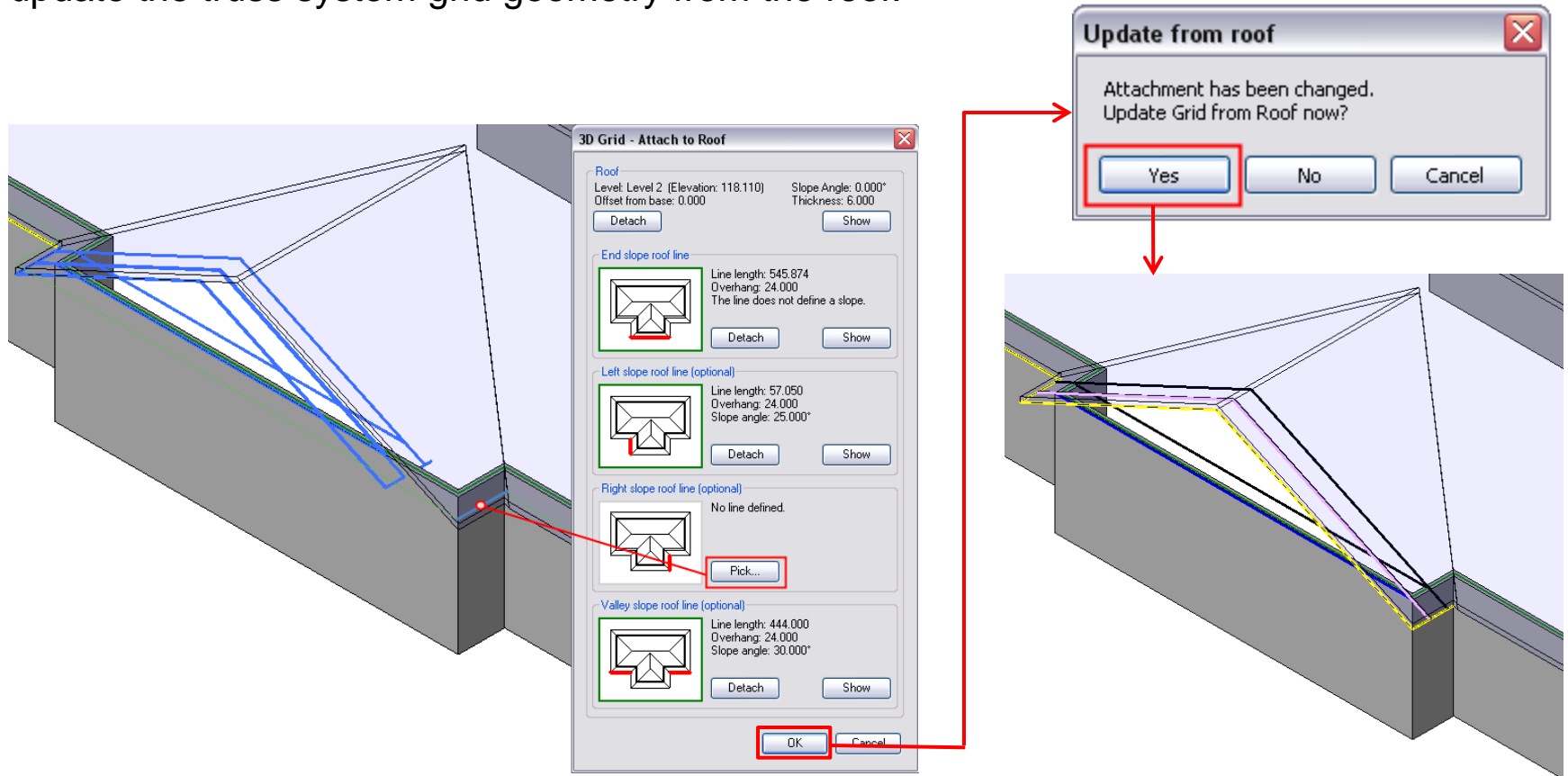
Attach/Detach Truss System Grid to Roof

- Choose *Detach* to detach the line and re-pick a new one if needed.



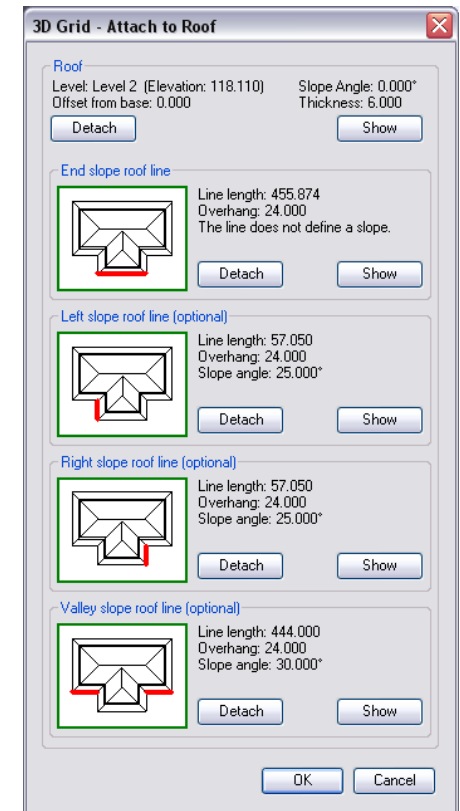
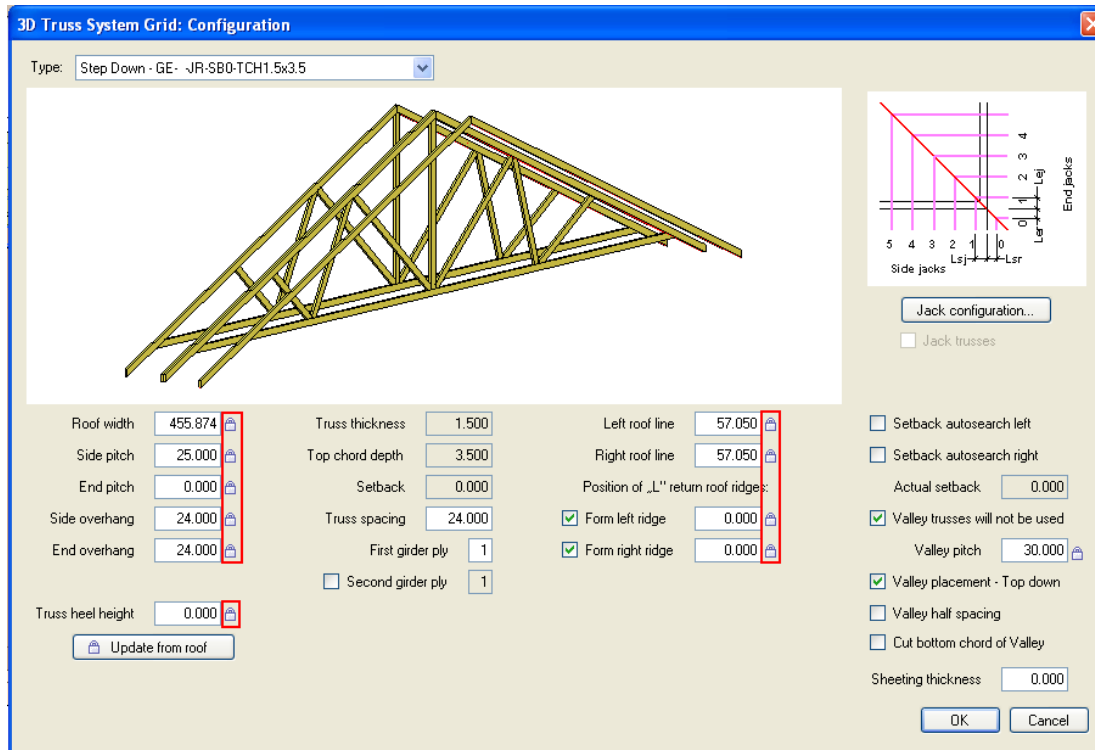
Attach/Detach Truss System Grid to Roof

- After modifications were made, choose if you want to update the truss system grid geometry from the roof.



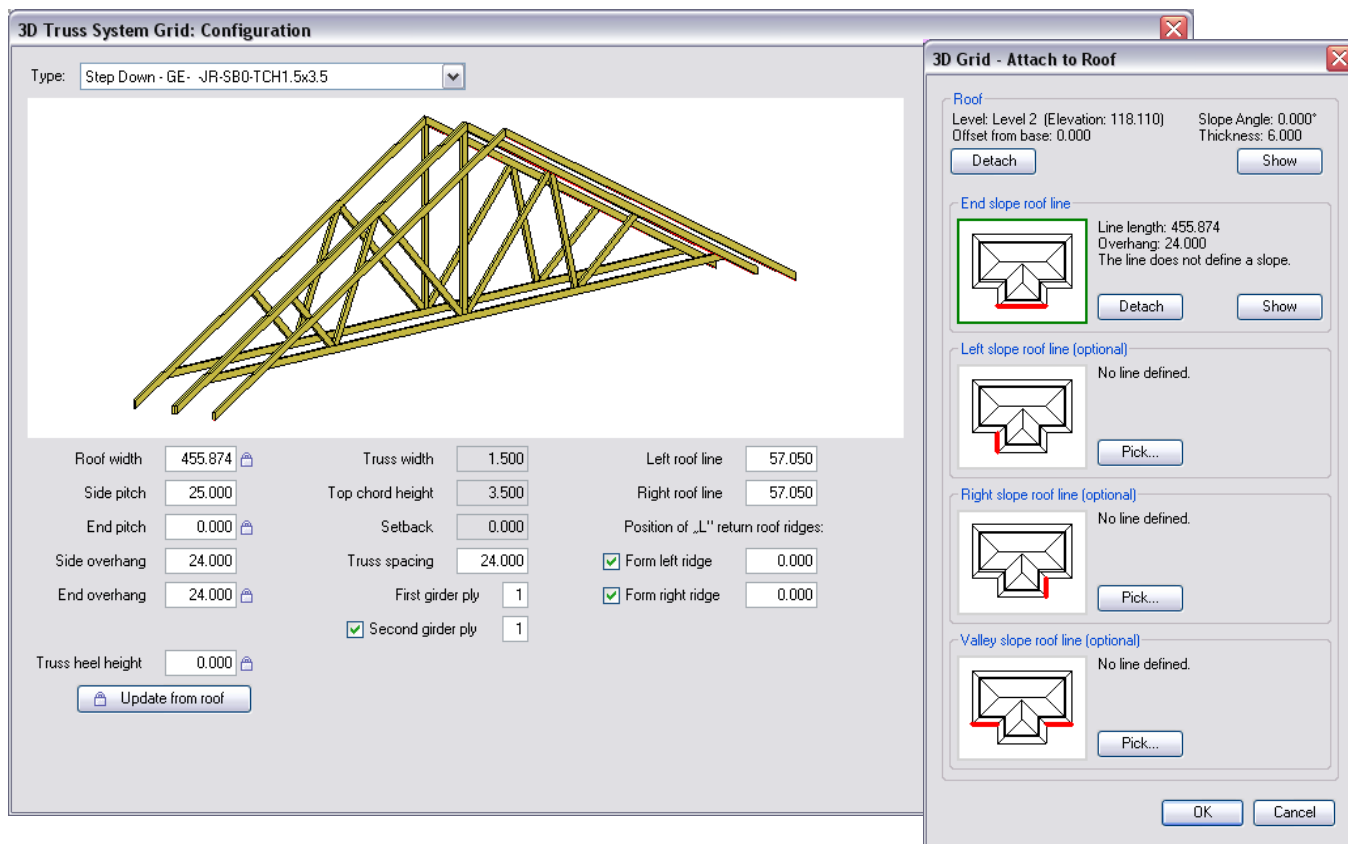
Attach/Detach Truss System Grid to Roof

- There are situations, when picking of roof lines is inconvenient, and it's better to enter parameters of a roof's geometry manually.
- If parameters of the truss system grid are attached to the roof, they will be locked.
- After the grid updating from the roof, attached (locked) parameters will be updated automatically, depending on the roof's geometry.



Attach/Detach Truss System Grid to Roof

- To enter parameters manually, you must detach the truss system grid from some of roof lines or even from all roof (in case you want to enter all parameters manually).
- The *Update from roof* function will not update detached parameters in this case.



Increase your productivity !



AGA CAD Ltd.
Zalgirio 112A, LT-09300 Vilnius,
Lithuania
Tel. +370 5 2398111
Fax +370 5 2398113
Email info@aga-cad.lt
info@tools4revit.com
www.tools4revit.com