


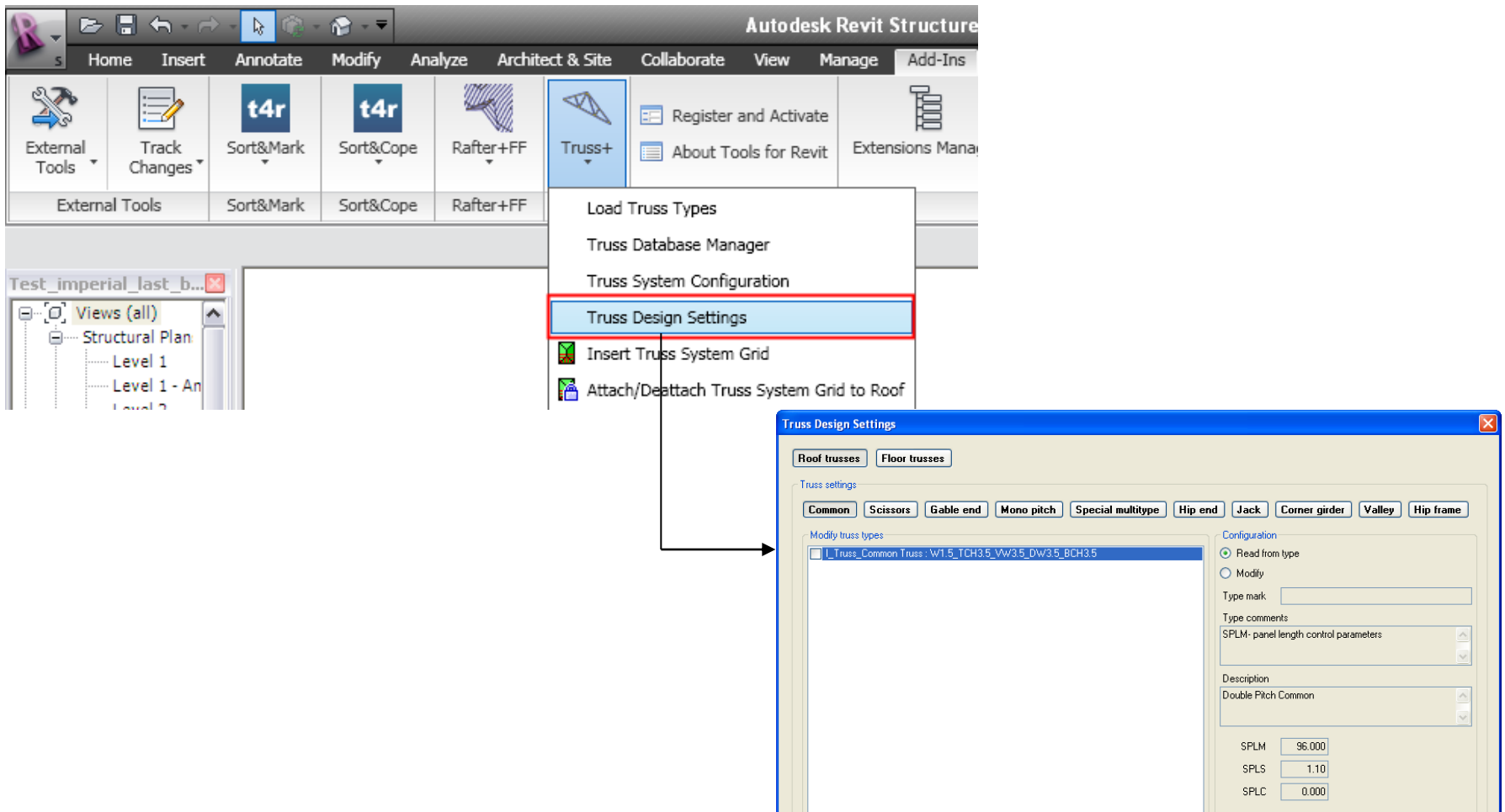


**Truss+ 2010**  
**Truss Design Settings**



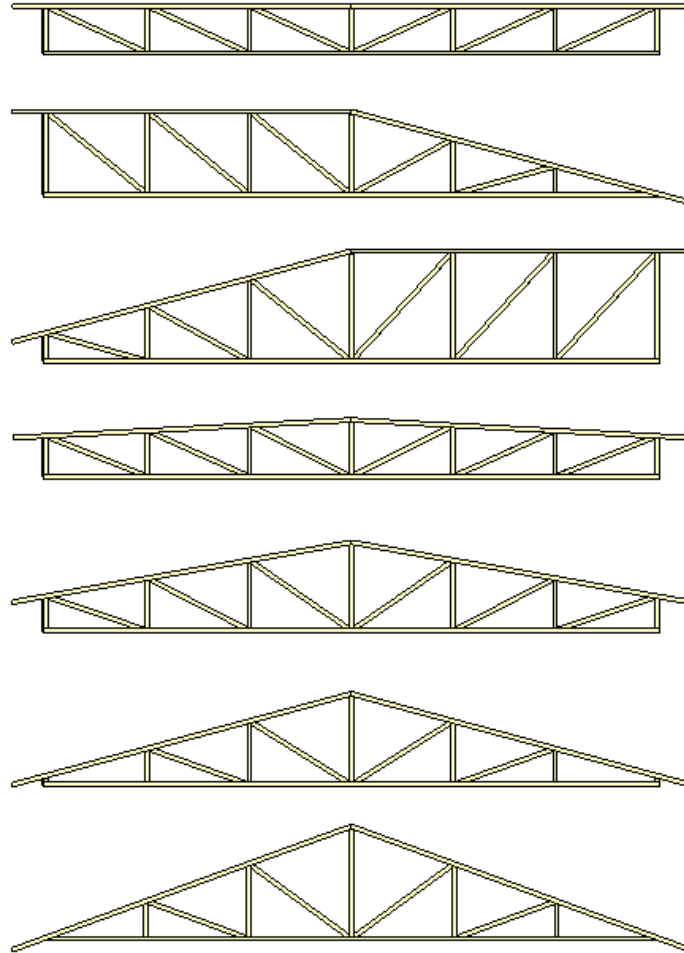
# Starting Truss Design Settings

- Choose *Truss Design Settings* directly from “Truss+” menu.



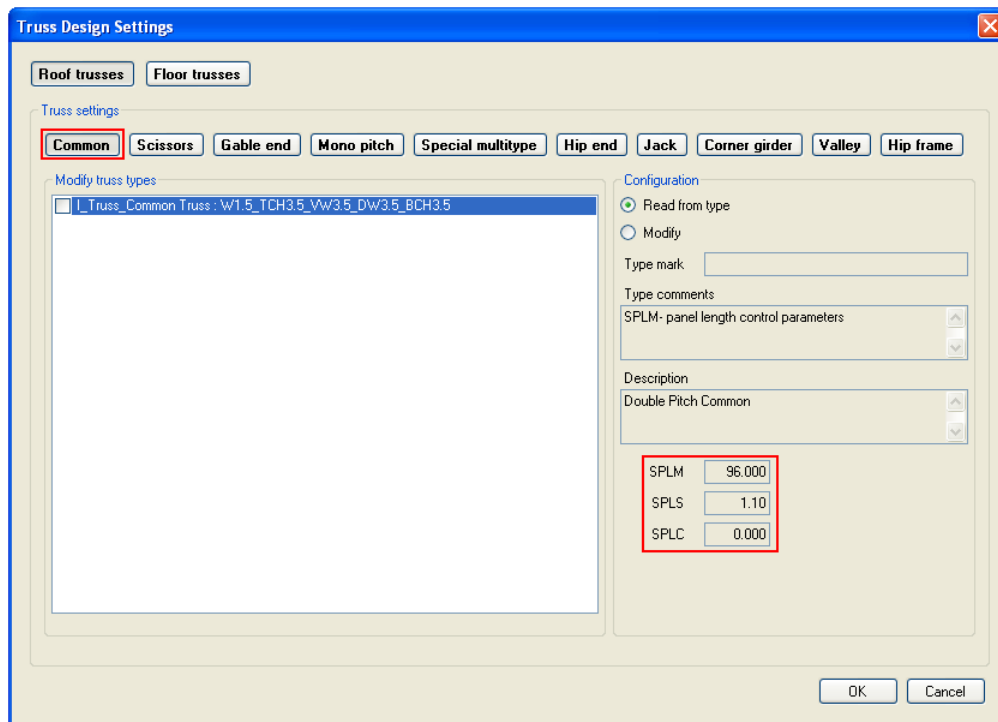
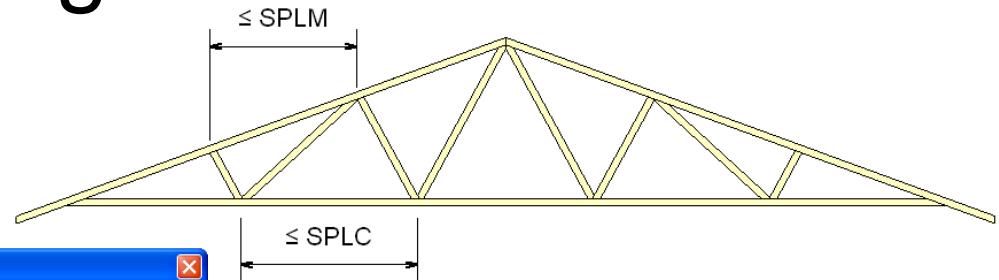
# Truss Design Settings – Common Truss

- Various states of the one type truss.



# Truss Design Settings – Common Truss

- The function *Truss Design Settings* is very useful for modification of truss parameters.

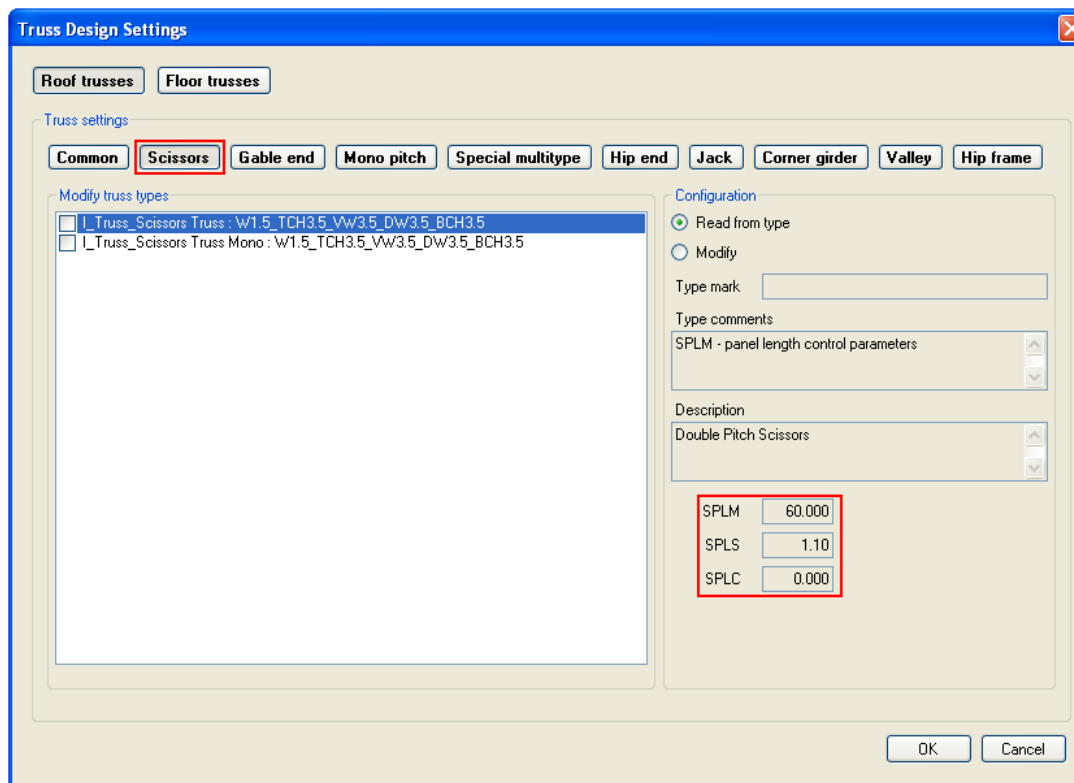
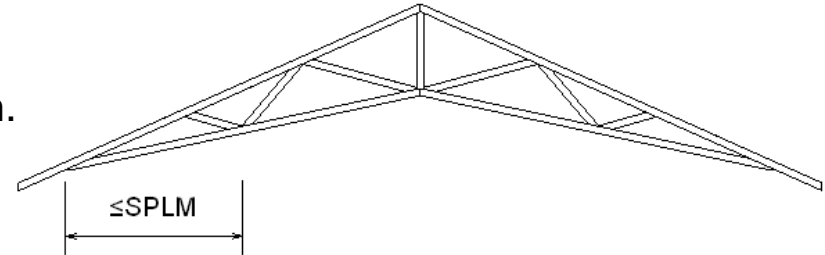


- SPLM is a maximum value of a panel length for a top chord. If it's exceeded, then the panel is divided with an additional web element.
- SPLS is a control value of the panel length for a bottom chord.
- SPLC is an additional control parameter.
- All these parameters can be modified in elements 'Type Properties' dialog.
- About Instance parameters please read the "Modify Truss" topic.

**Note.** If value of any control parameter is equal to zero, this parameter isn't used.

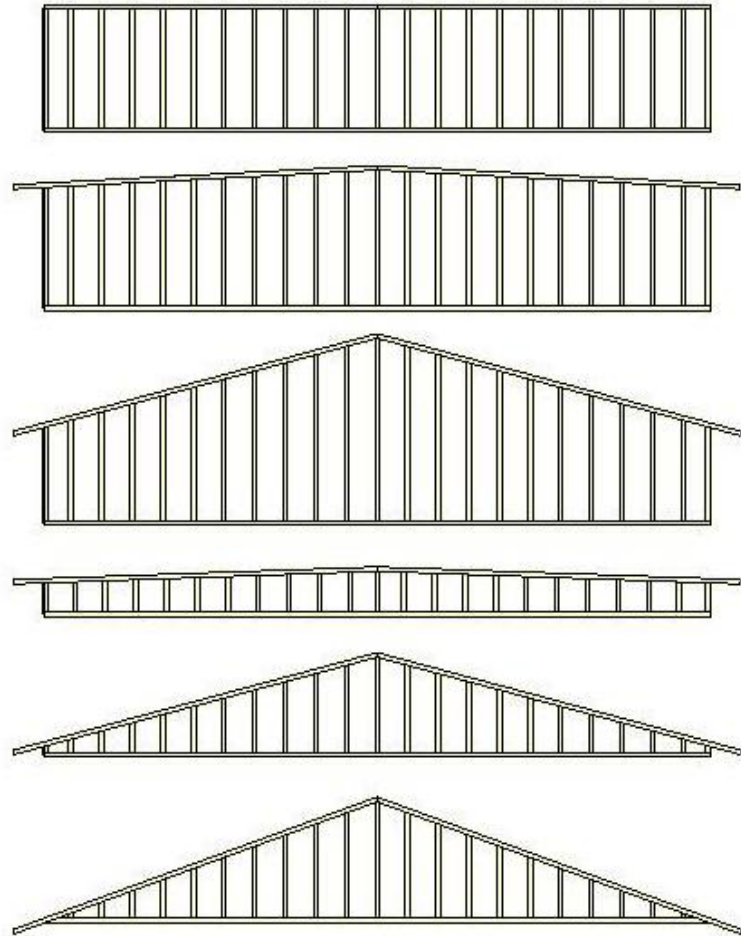
# Truss Design Settings – Scissors Truss

- SPLM is the maximum value of the panel length. If it's exceeded, then the panel is divided with an additional web element.



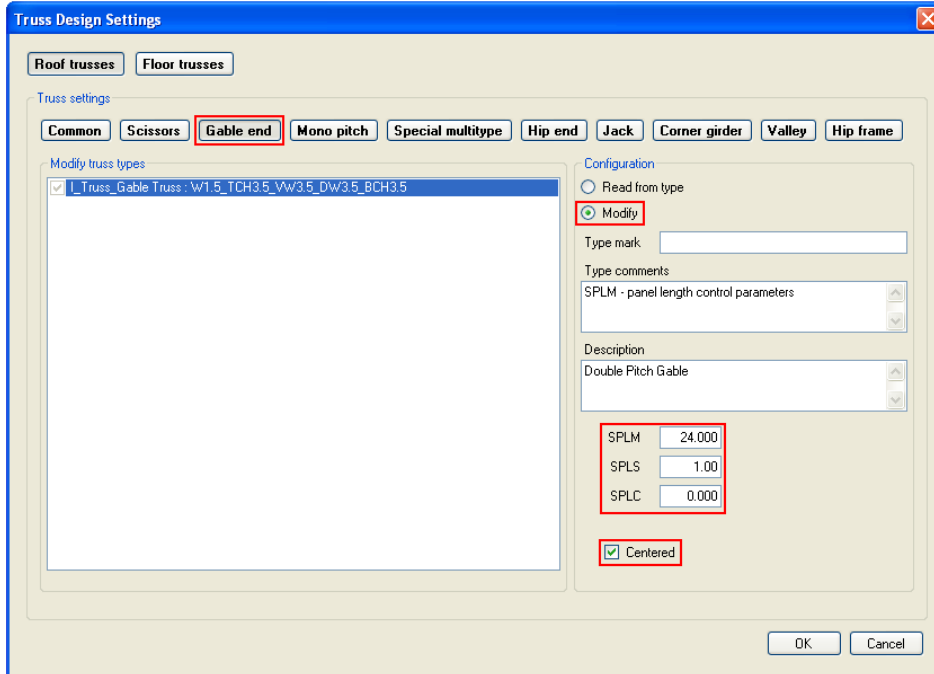
# Truss Design Settings – Gable End Truss

- Various states of the one type truss.



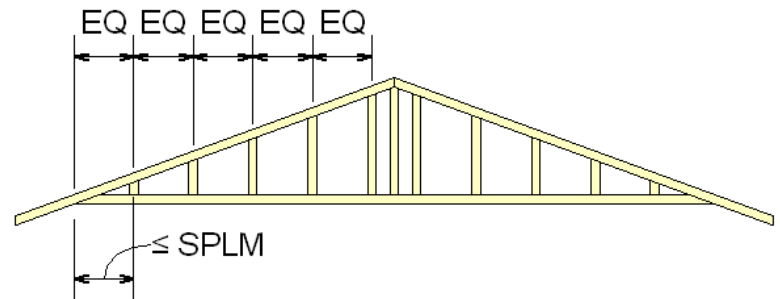
# Truss Design Settings – Gable End Truss

- SPLM is the maximum value of the panel length. If it's exceeded, then the panel is divided with an additional web element.



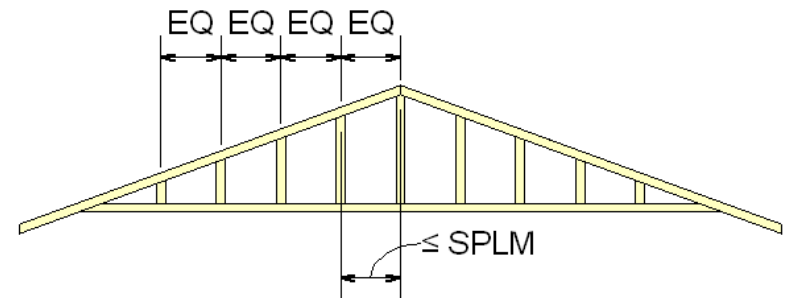
- Non Centered Gable end truss

Centered



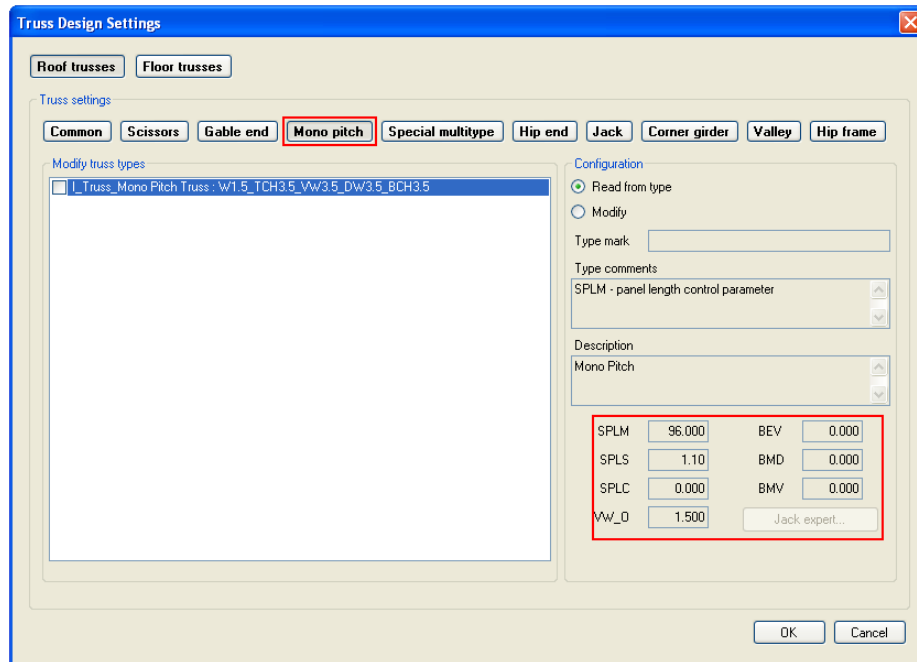
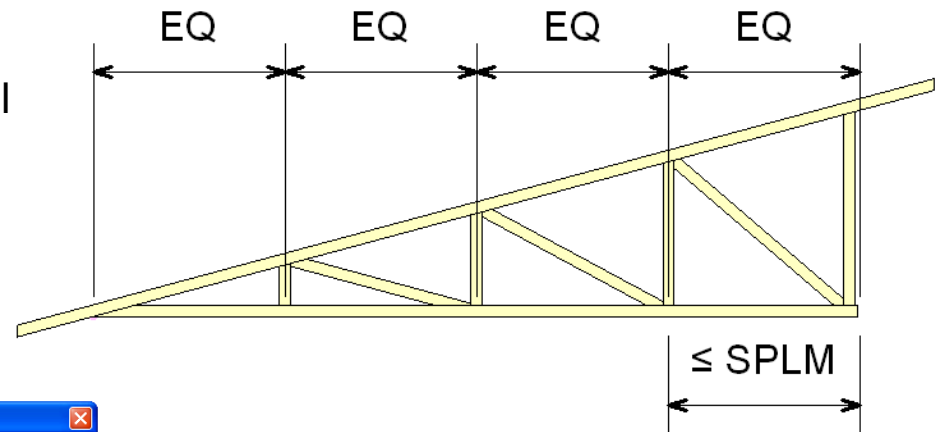
- Centered Gable end truss

Centered



# Truss Design Settings – Mono Pitch Truss

- SPLM is the maximum value of the panel length. If it's exceeded, then the panel is divided with an additional web element.

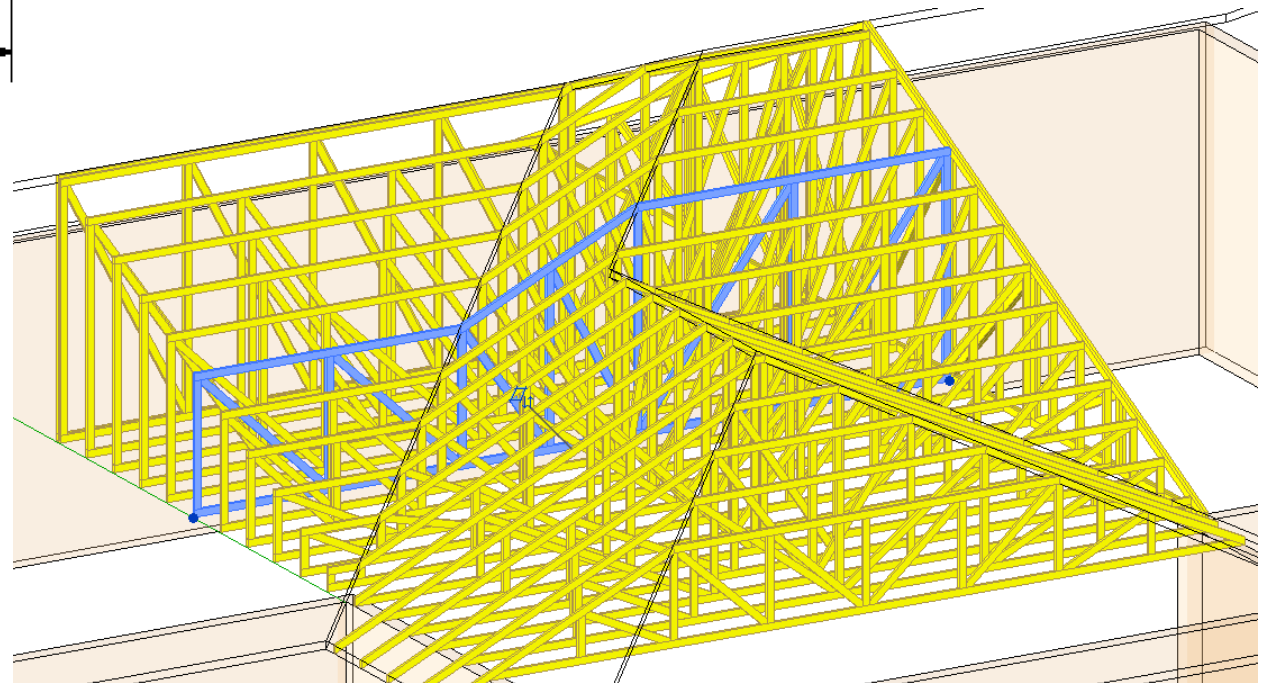
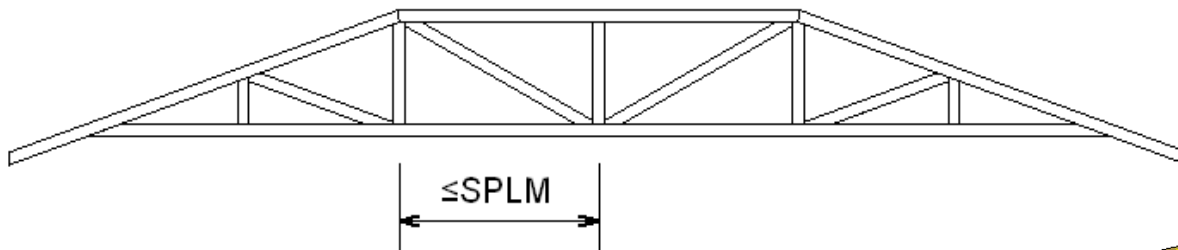


**Note.** For the mono pitch truss *Jack expert* is closed.



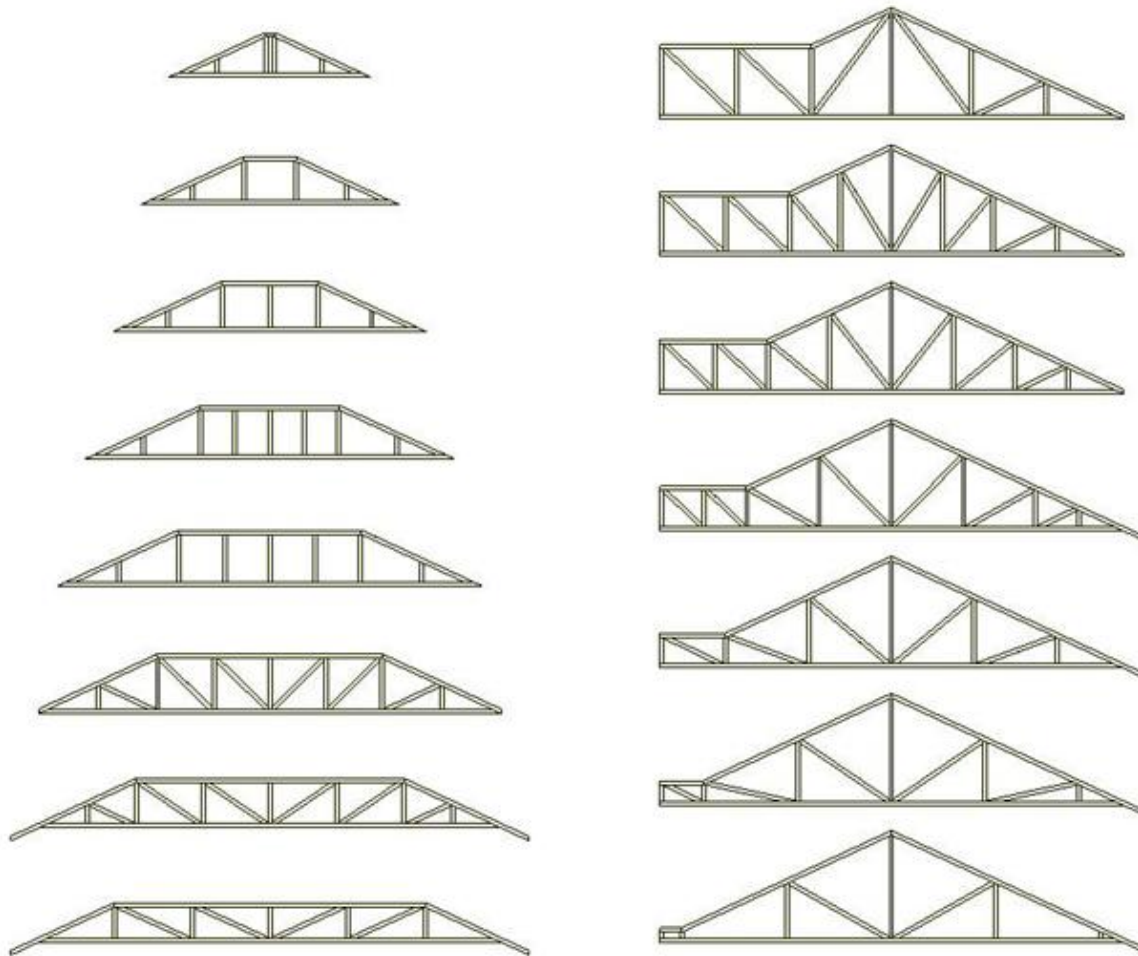
# Truss Design Settings – Special Multitype Truss

- SPLM is the maximum value of the panel length. If it's exceeded, then the panel is divided with an additional web element.



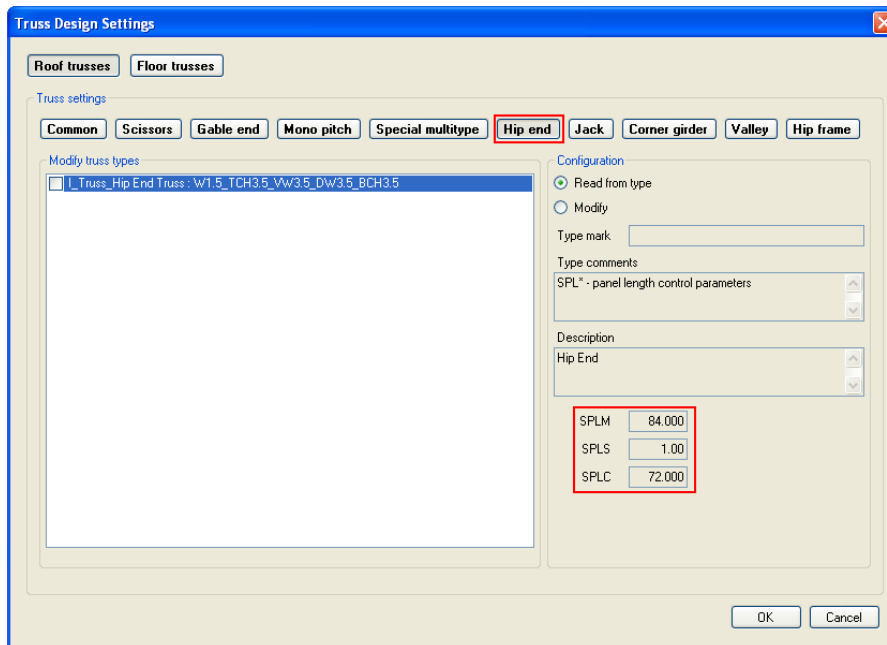
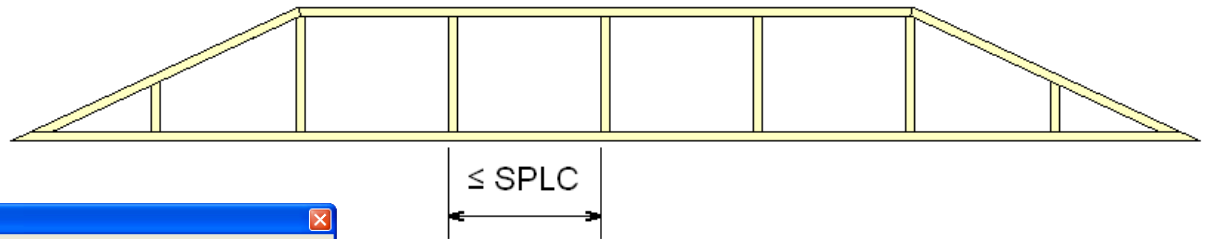
# Truss Design Settings – Hip End Truss

- Various states of the one type truss.



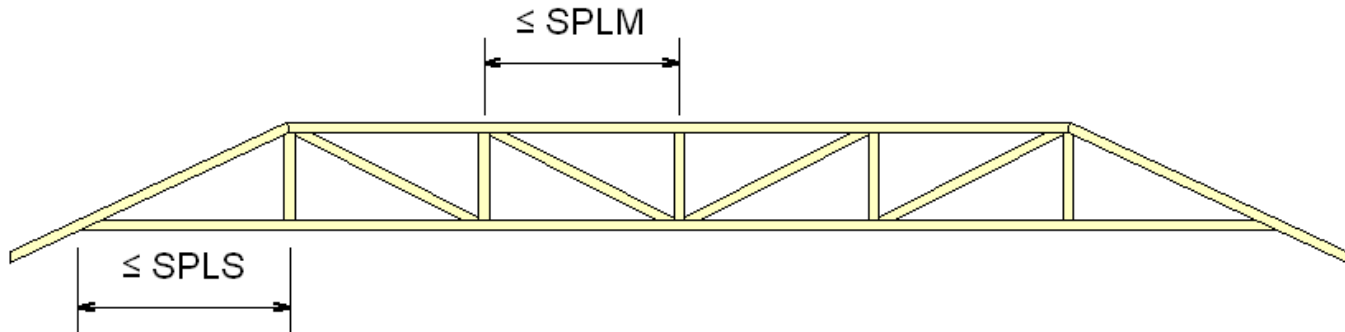
# Truss Design Settings – Hip End Truss

- SPLC is evaluated as a maximum panel length only for valley hip end trusses.

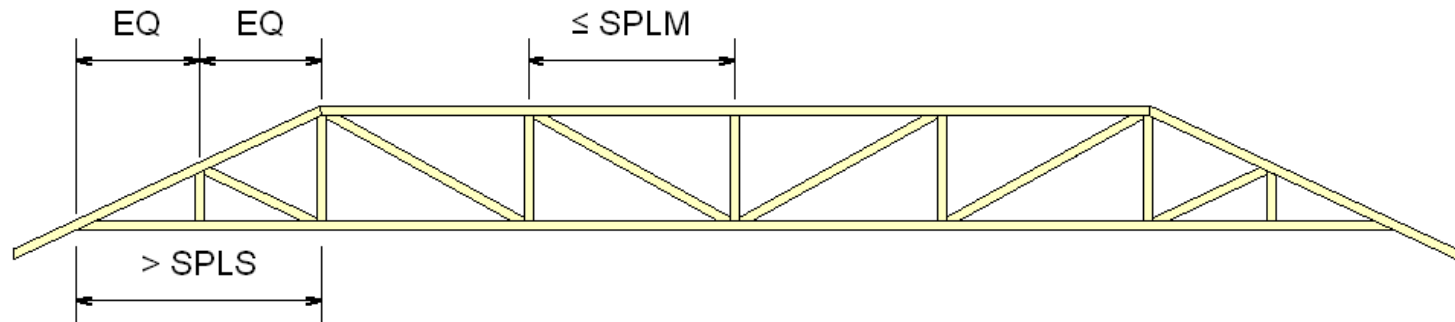


# Truss Design Settings – Hip End Truss

- SPLM is the maximum value of the panel length for the top chord. If it's exceeded, then this panel is divided with an additional web element.

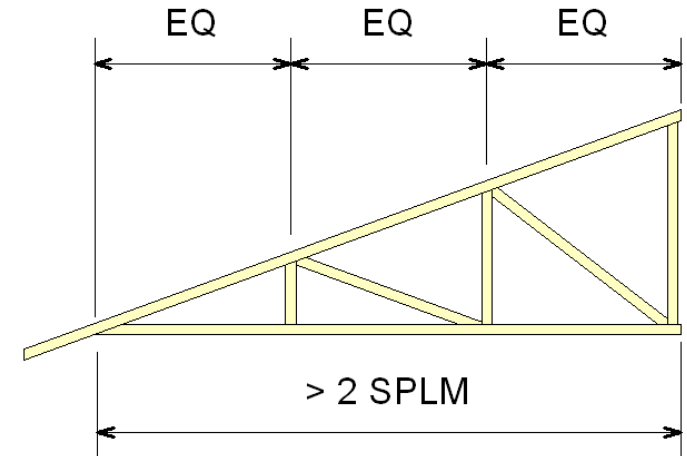
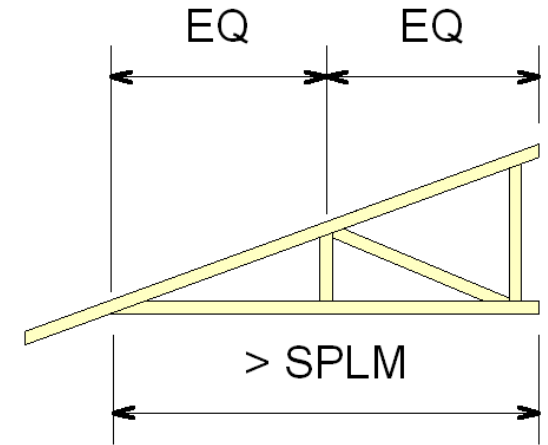
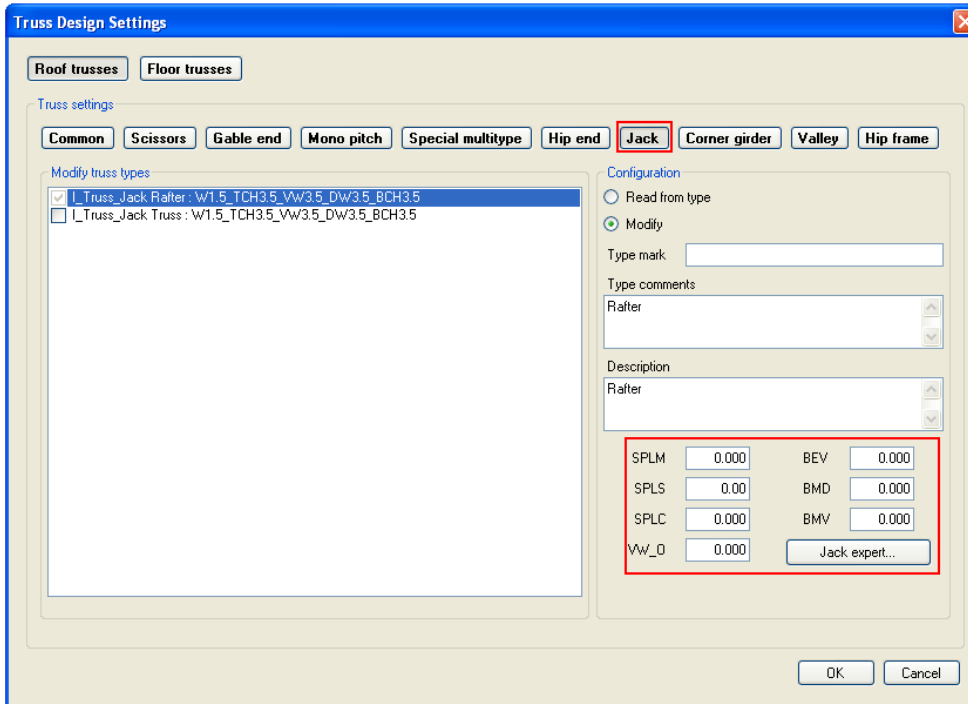


- SPLS is the maximum value of the panel length for the bottom chord. If it's exceeded, then this panel is divided with an additional web element.



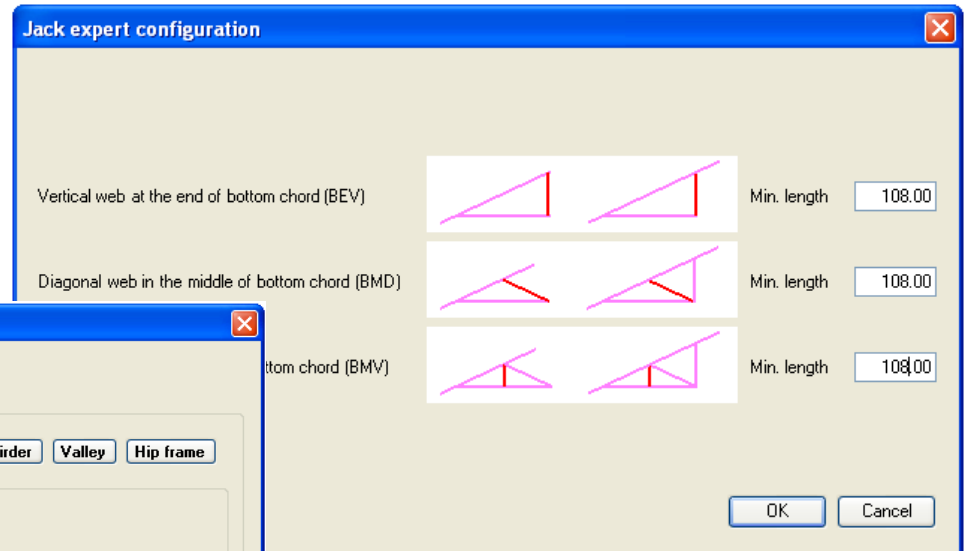
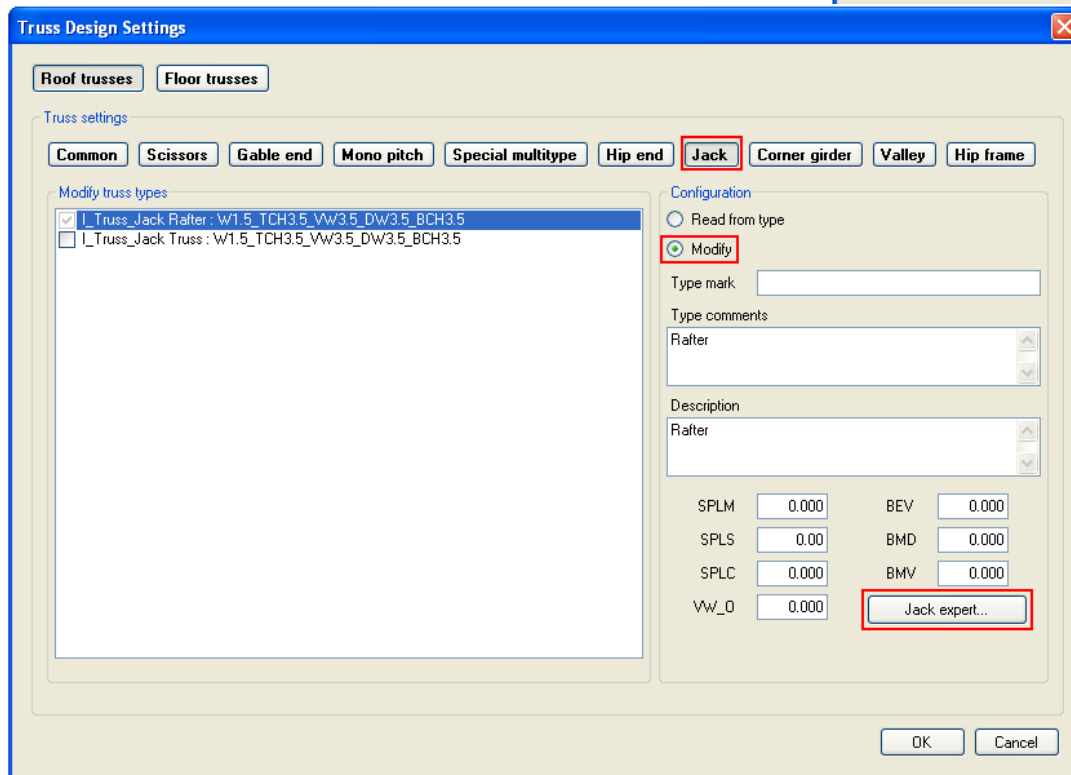
# Truss Design Settings – Jack Truss

- SPLM is the maximum value of the panel length. If it's exceeded, then the panel is divided with an additional web element.



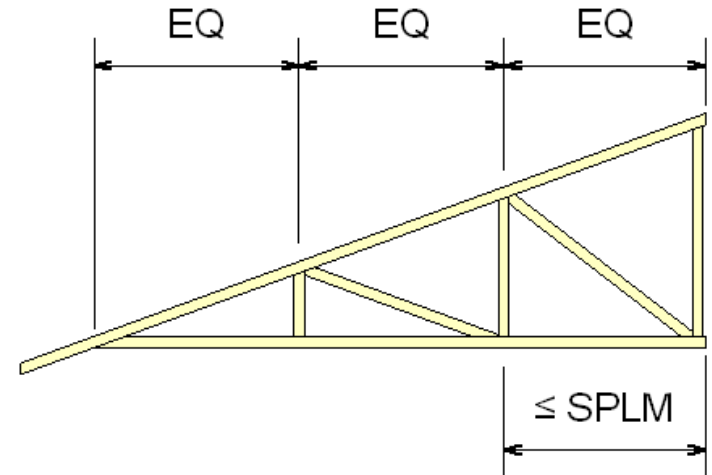
# Truss Design Settings – Jack Truss

- Jack truss has an additional control function – *Jack expert*.

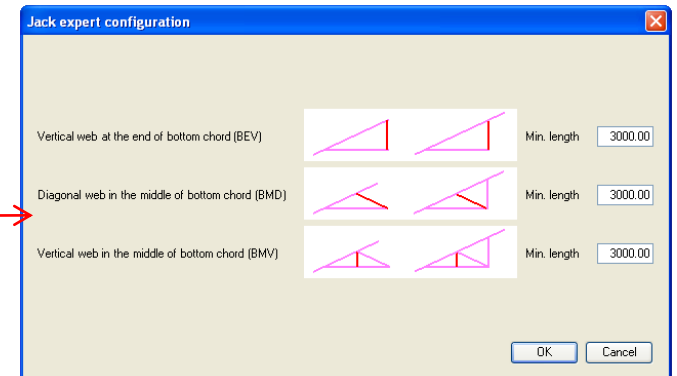
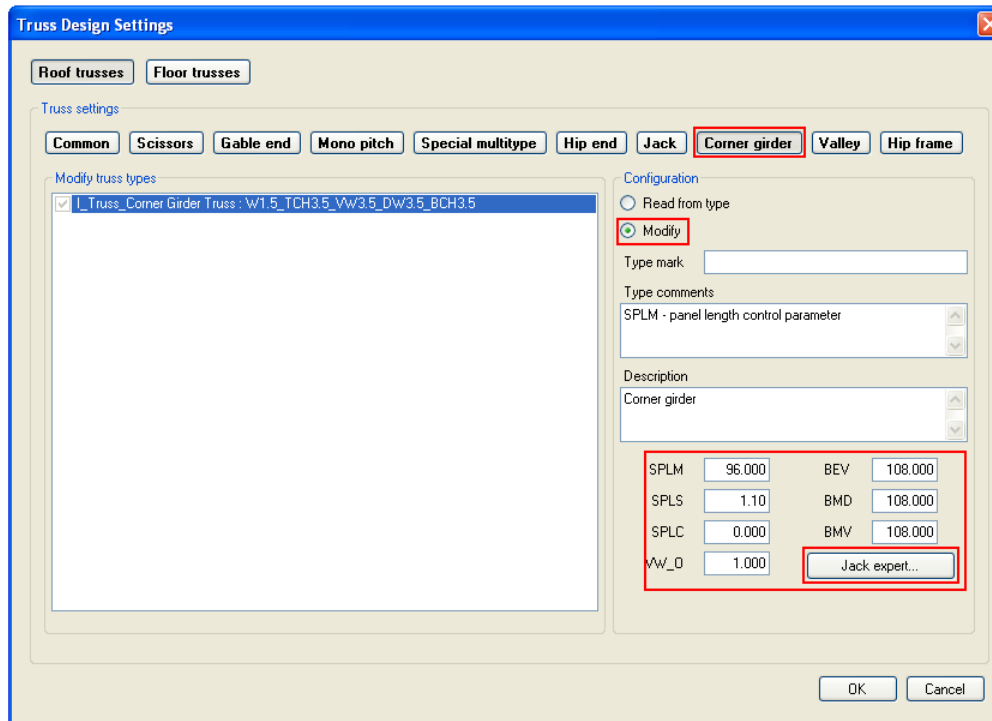


# Truss Design Settings – Corner Girder Truss

- Corner girder truss has the same parameters as Jack truss.

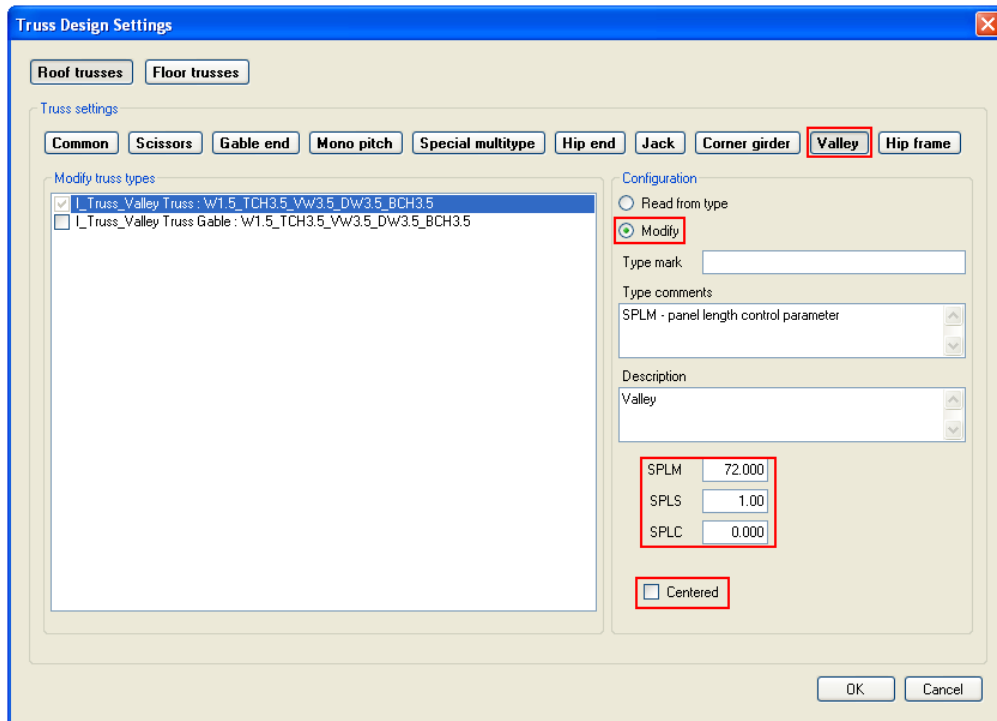


- Corner girder truss has an additional function – *Jack expert*.

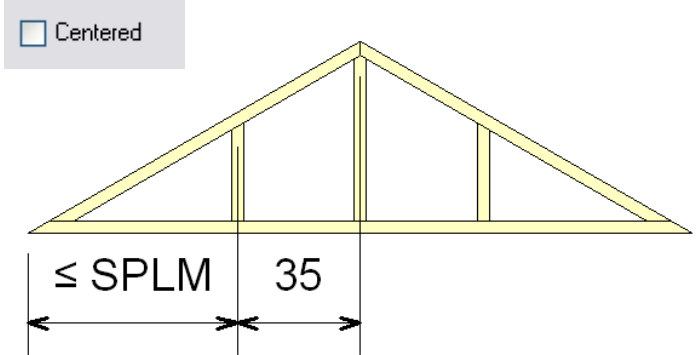


# Truss Design Settings – Valley Truss

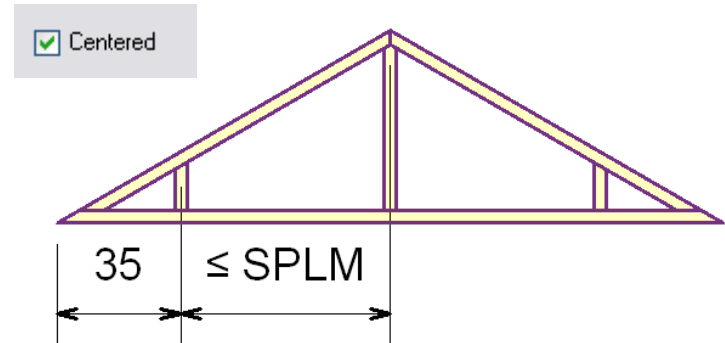
- SPLM is the maximum value of the panel length. If it's exceeded, then the panel is divided with an additional web element.



- Non Centered Valley truss



- Centered Valley truss





# Increase your productivity !



AGA CAD Ltd.  
Zalgirio 112A, LT-09300 Vilnius,  
Lithuania  
Tel. +370 5 2398111  
Fax +370 5 2398113  
Email [info@aga-cad.lt](mailto:info@aga-cad.lt)  
[info@tools4revit.com](mailto:info@tools4revit.com)  
[www.tools4revit.com](http://www.tools4revit.com)