



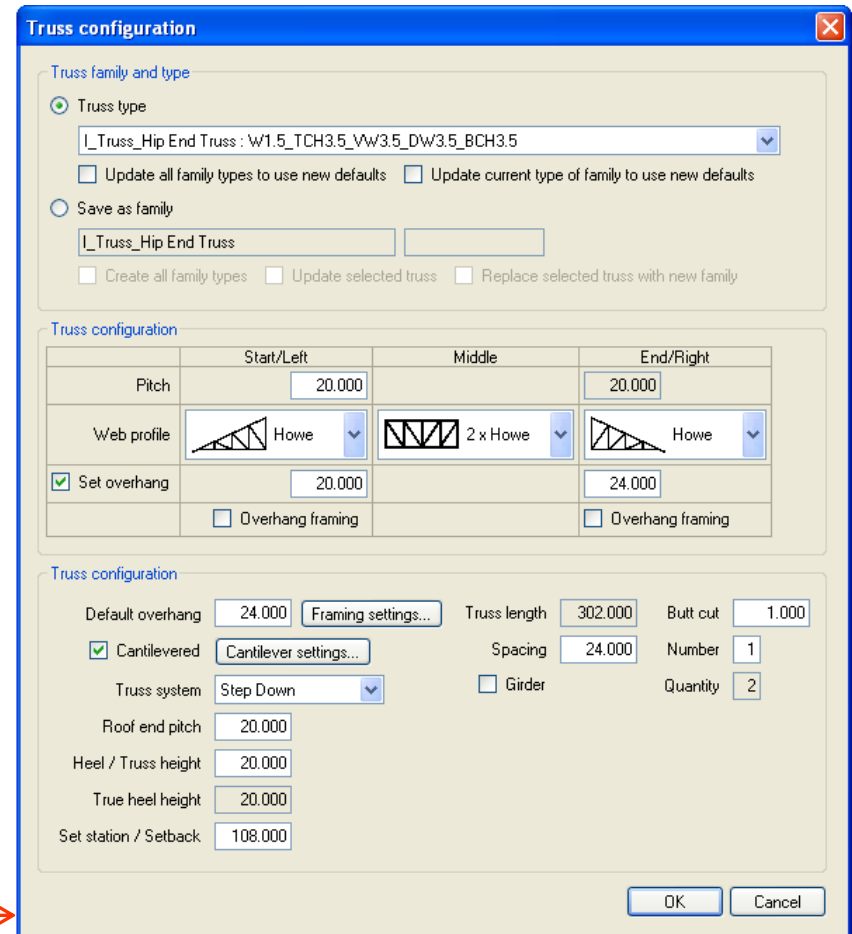
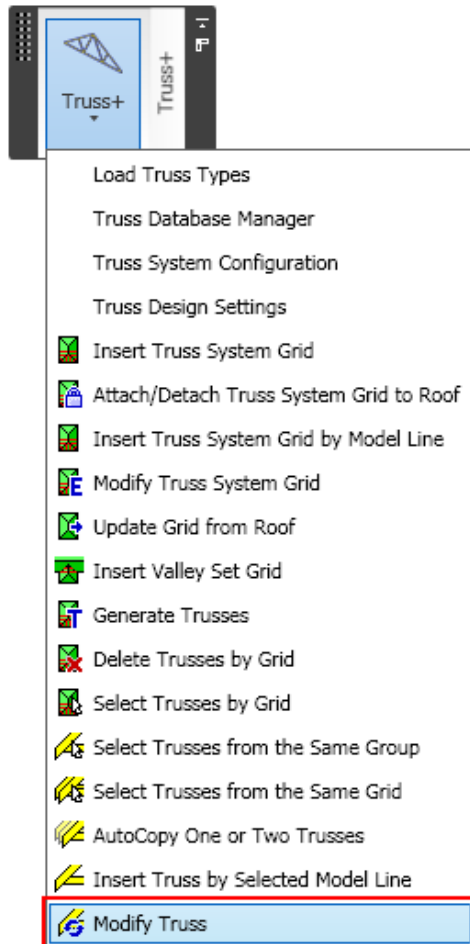
Truss+ 2010 Modify Truss

Hip end truss



Modify Truss

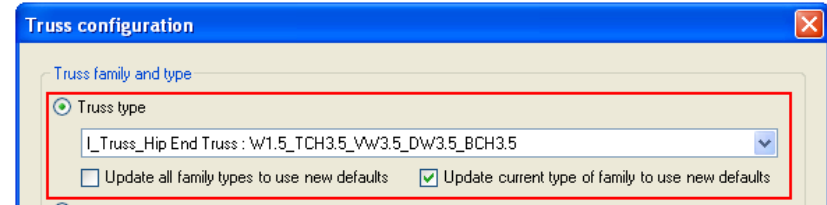
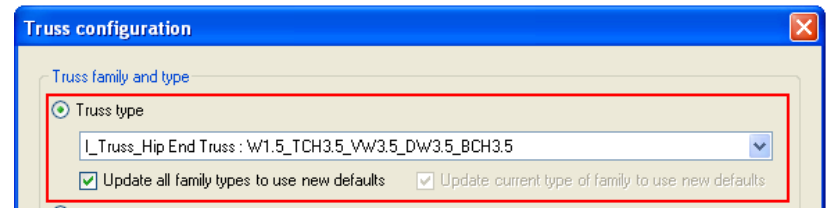
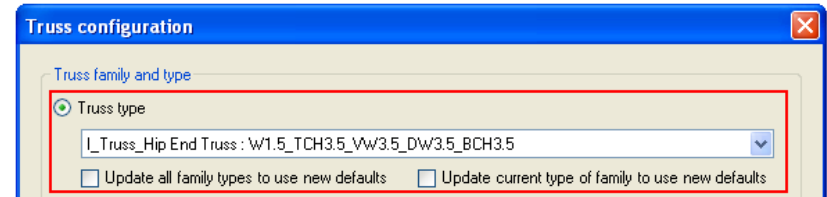
- Select Hip end truss.
- Choose the *Modify Truss* option from “Truss+” menu.



Modify Truss

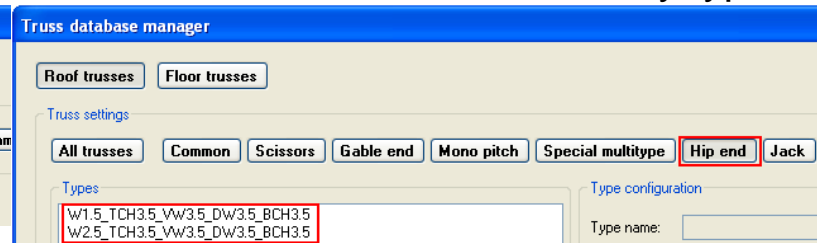
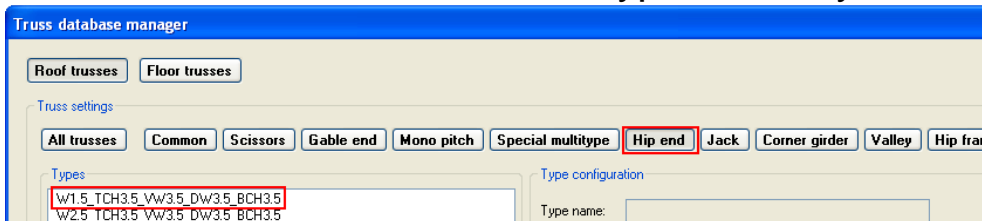
In a coming dialog the user can modify instance parameters of inserted truss, update default parameters of the current family or create a new one.

- Change instance parameters of a selected truss (default values of instance parameters remain the same).
- Change instance parameters of a selected truss and update **all family types** to use new defaults (all Truss types created by Database manager).
- Change instance parameters of a selected truss and update **current type of family** to use new defaults.



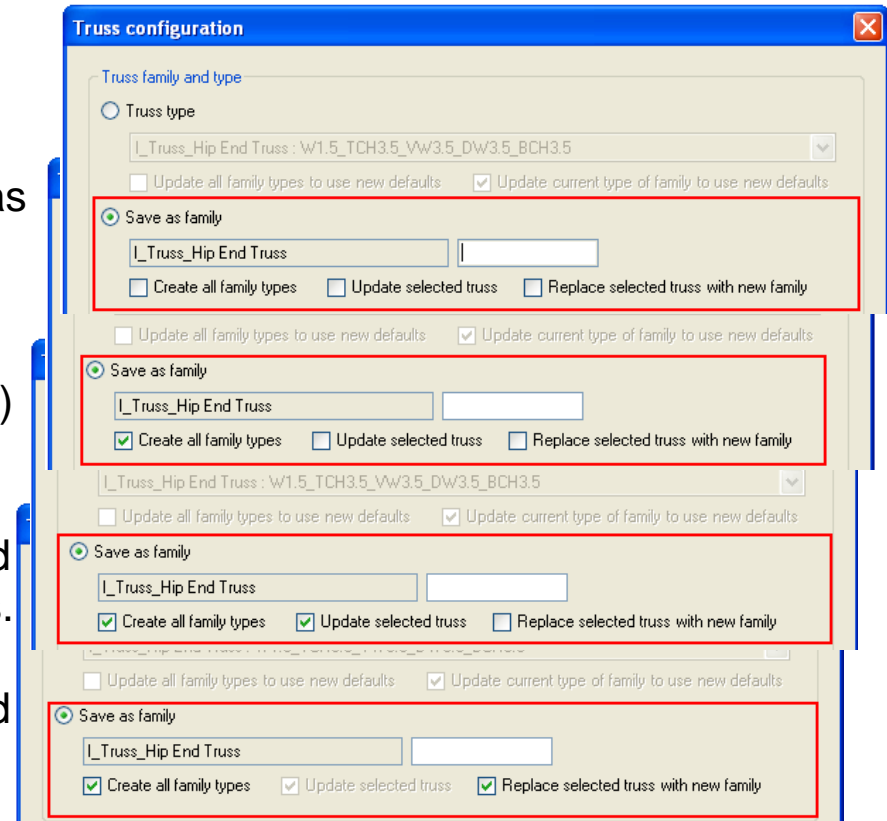
Current type of family

All family types



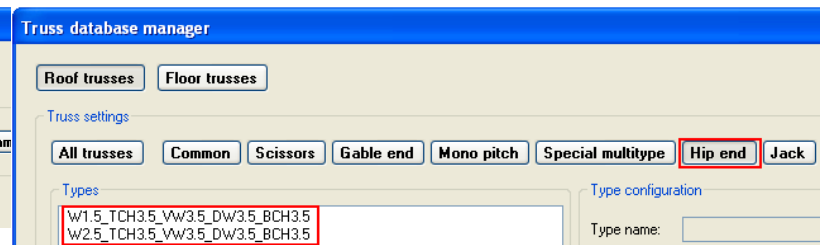
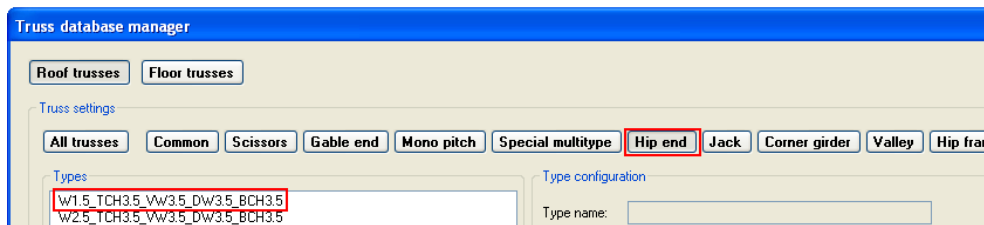
Modify Truss

- Create a new family additionally (one type, as selected one) without updating selected one.
- Create **all Hip end truss new family types** (all Truss types created by Database manager) without updating selected one.
- Create new **Hip end truss family types** and update instance parameters of **selected truss**.
- Create new **Hip end truss family types** and replace **selected truss** with a new family.

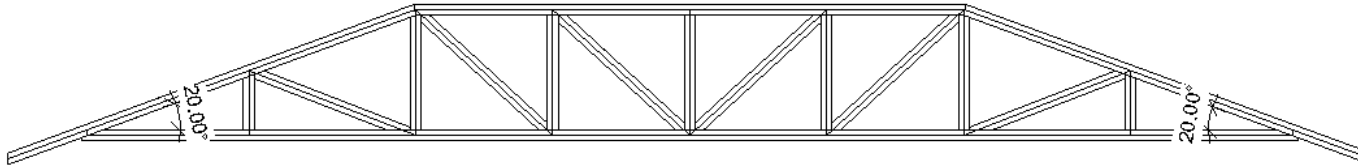


Current type of family

All family types



Modify Truss



Define parameters:

- *Pitch*;
- *Web profile* for every part of the truss.

Truss configuration

Truss family and type

Truss type

Update all family types to use new defaults Update current type of family to use new defaults

Save as family

Create all family types Update selected truss Replace selected truss with new family

Truss configuration

	Start/Left	Middle	End/Right
Pitch	20.000		20.000
Web profile	Howe	2 x Howe	Howe
<input type="checkbox"/> Set overhang	Fink		24.000
	Queen		<input type="checkbox"/> Overhang framing
	Howe		

Truss configuration

Default overhang settings... Truss length 302.000 Butt cut 0.000

Cantilever Spacing 24.000 Number 1

Truss system Mod Fan Girder Quantity 3

Roof end pitch 20.000

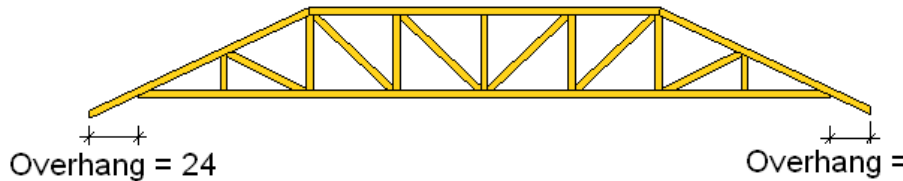
Heel / Truss height 0.000

True heel height 3.725

Set station / Setback 84.000

OK Cancel

Modify Truss



- Switch On the *Set overhang* option and define *Start* and *End* overhang value if they are different.
- If not, define *Default overhang value*.
- Select the *Truss system* type.

Truss configuration

Truss family and type

Truss type

I_Truss_Hip End Truss : w1.5_TCH3.5_Vw3.5_DW3.5_BCH3.5

Update all family types to use new defaults Update current type of family to use new defaults

Save as family

I_Truss_Hip End Truss

Create all family types Update selected truss Replace selected truss with new family

Truss configuration

	Start/Left	Middle	End/Right
Pitch	20.000		20.000
Web profile	Howe	2 x Howe	Howe
<input checked="" type="checkbox"/> Set overhang	20.000		24.000
<input type="checkbox"/> Overhang framing			<input type="checkbox"/> Overhang framing

Truss configuration

Default overhang 24.000 Framing settings...

Cantilevered Cantilever settings...

Truss length 302.000 Butt cut 0.000

Spacing 24.000 Number 1

Girder Quantity 3

Truss system Step Down

Roof end pitch California

Heel / Truss height Step Down

Truncated

True heel height 3.725

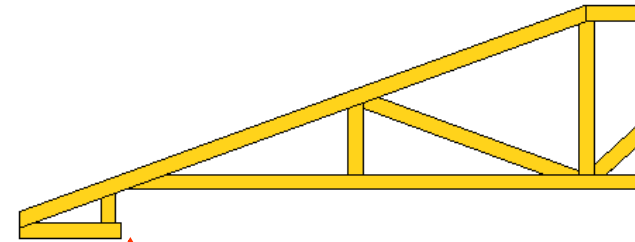
Set station / Setback 84.000

OK Cancel

Modify Truss

- Switch On the option *Overhang framing* if it's needed.
- Define *Overhang framing settings*.

User can define different value of an overhang length on Start and End points of the truss.



Truss configuration

Truss family and type

Truss type

L_Truss_Hip End Truss : W1.5_TCH3.5_Vw3.5_Dw3.5_BCH3.5

Update all family types to use new defaults Update current type of family to use new defaults

Save as family

L_Truss_Hip End Truss

Create all family types Update selected truss Replace selected truss with new family

Truss configuration

	Start/Left	Middle	End/Right
Pitch	20.000		20.000
Web profile	Howe	2 x Howe	Howe
<input checked="" type="checkbox"/> Set overhang	20.000		24.000
<input checked="" type="checkbox"/> Overhang framing			<input checked="" type="checkbox"/> Overhang framing

Truss configuration

Default overhang 24.000 **Framing settings...** Truss length 302.000 Built cut 0.000

Cantilevered Cantilever settings... Spacing 24.000 Number 1

Truss system Step Down Girder Quantity 3

Roof end pitch 20.000

Heel / Truss height 0.000

True heel height 3.725

Set station / Setback 84.000

OK Cancel

Truss configuration: Overhang framing

Overhang framing settings

Framing depth 6.000

Framing overhang 24.000

FW d 3.500

NW d 3.500

HW d 3.500

FW bo 2.000

NW bo 0.000

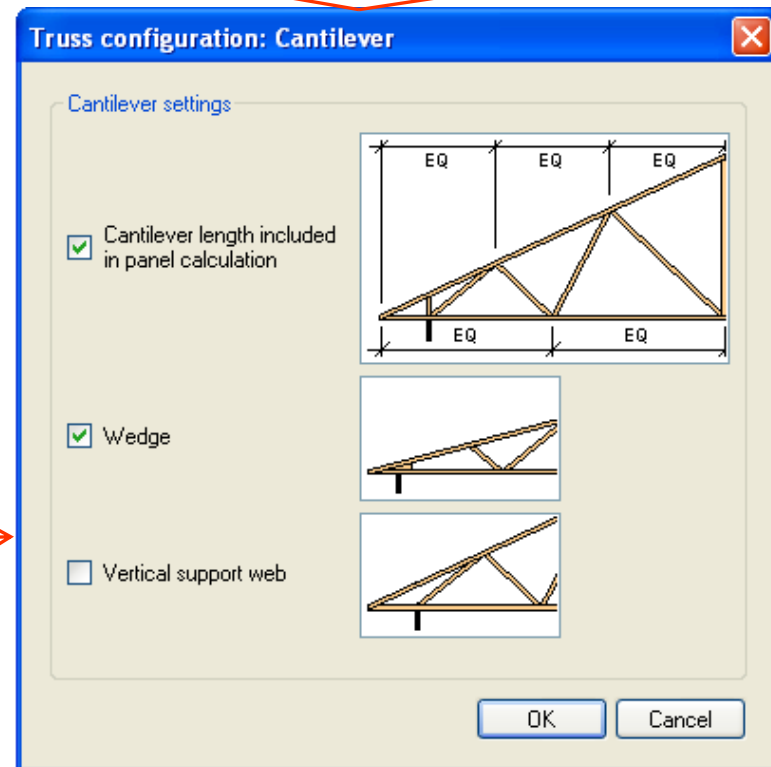
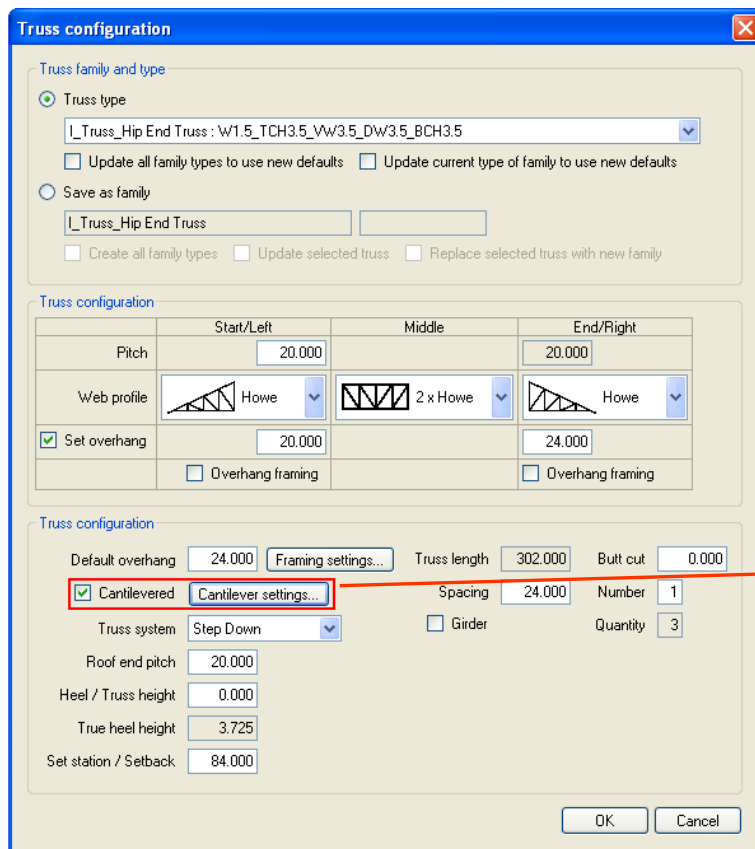
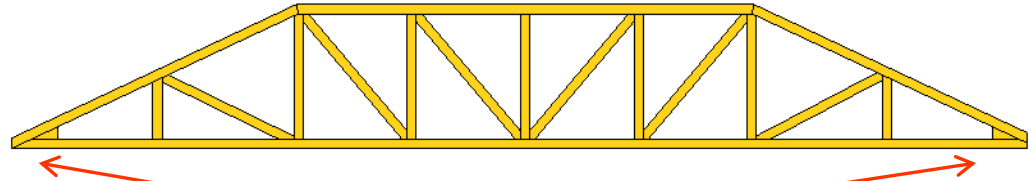
NW wo 2.000

HW wo 1.000

OK Cancel

Modify Truss

- Switch On the *Cantilevered* check box if it's needed.
- Define *Cantilever settings*.

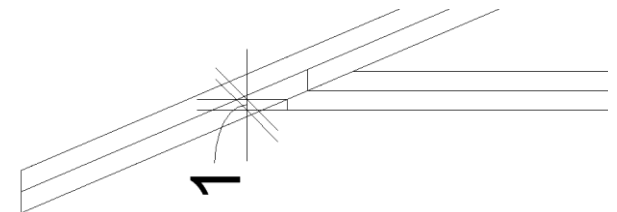
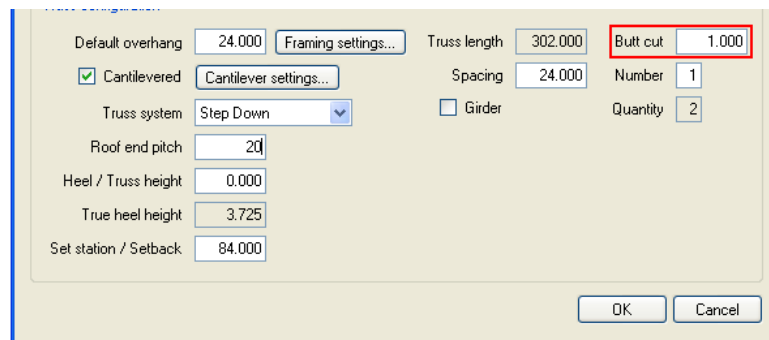
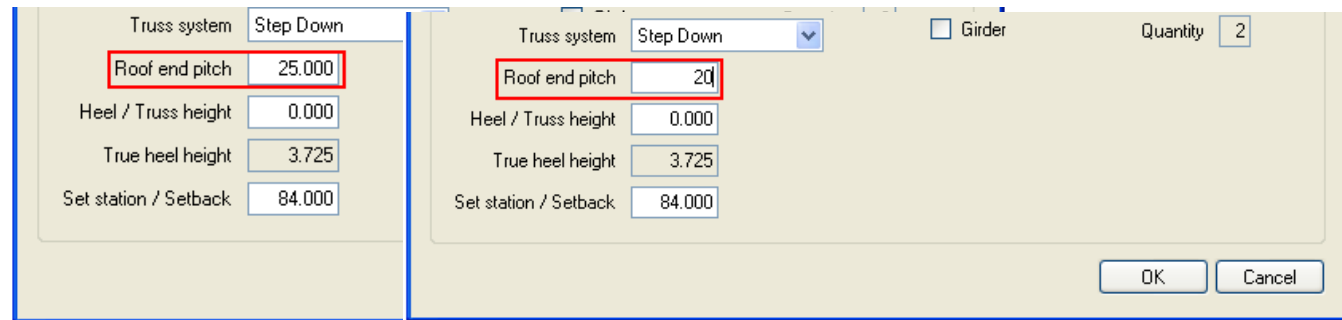
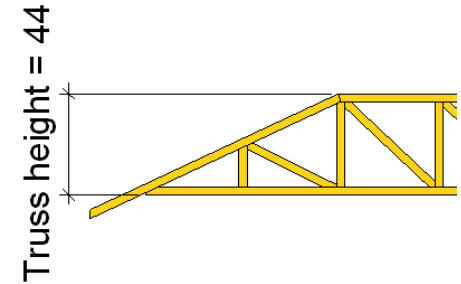
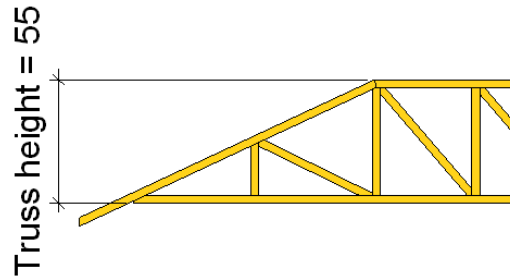


Modify Truss

Very often the height of the truss is determinate of the roof hip end.

- Set *Roof end pitch*, “Truss+” will calculate the truss height considering defined value automatically.

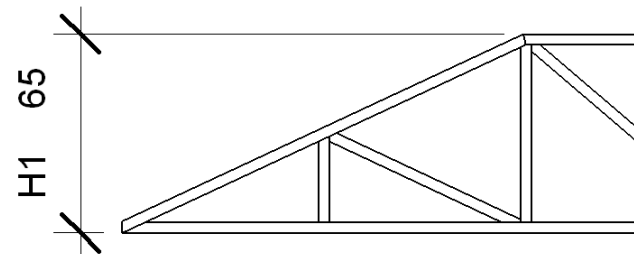
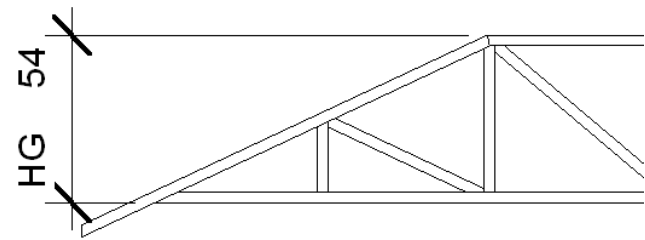
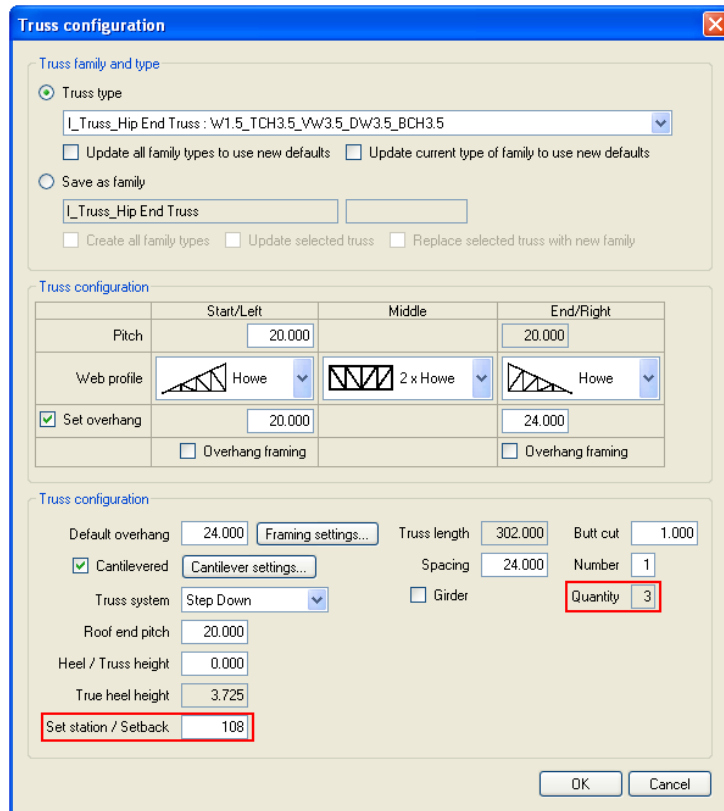
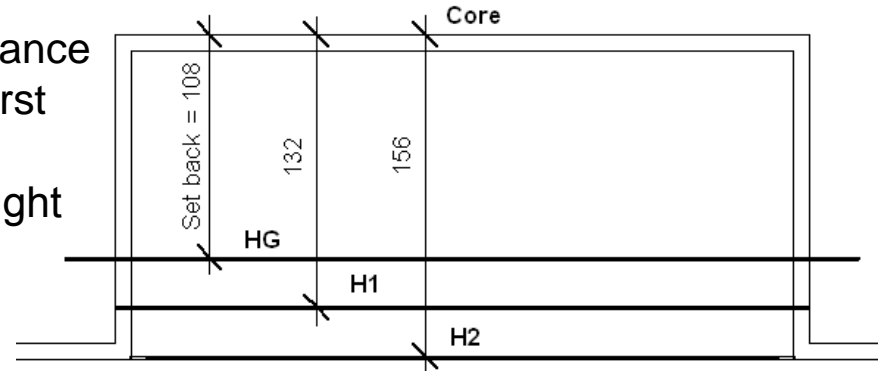
- Define *Butt cut* value if it is needed.



Modify Truss

- Define the *Set station/Setback* value (a distance between the wall core external face and the first truss external face).

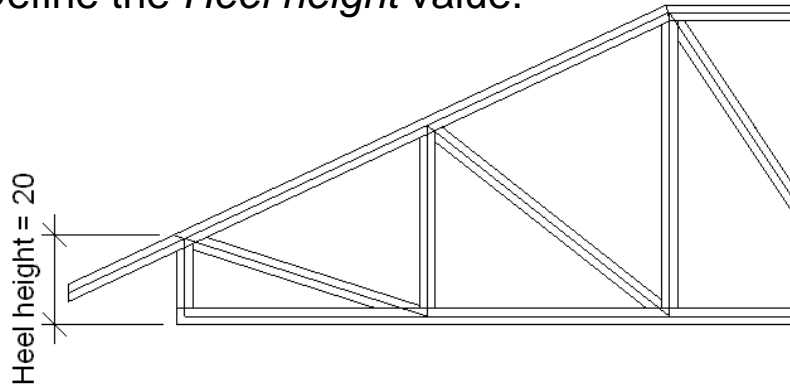
Considering this value “Truss+” calculates height and proper *Quantity* of Hip end trusses.



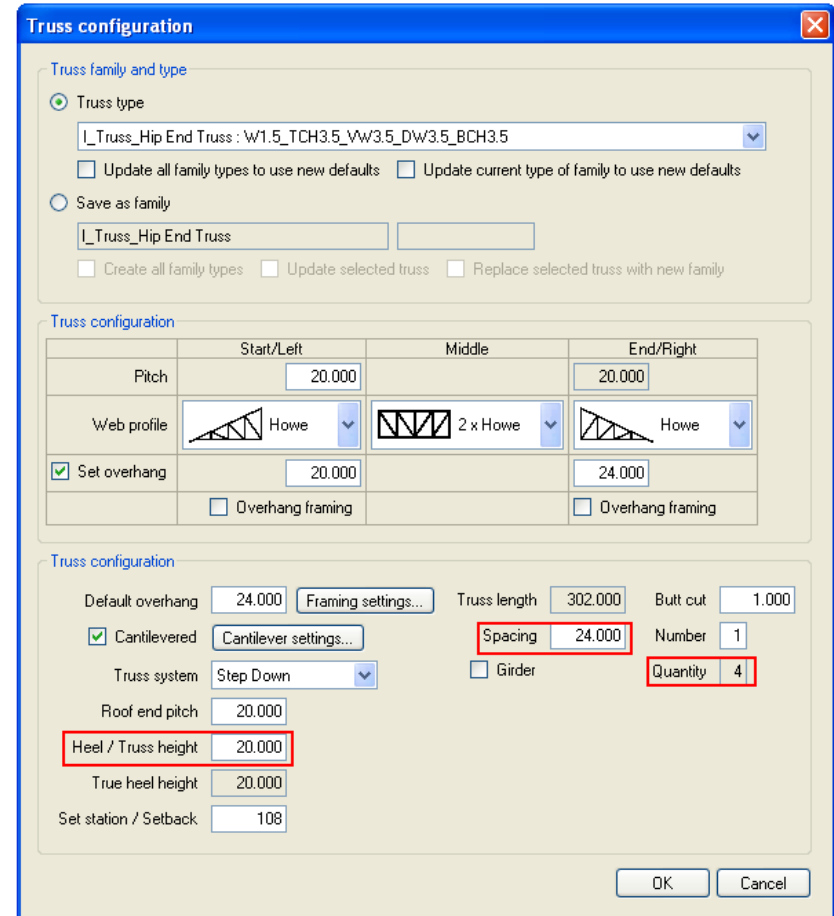
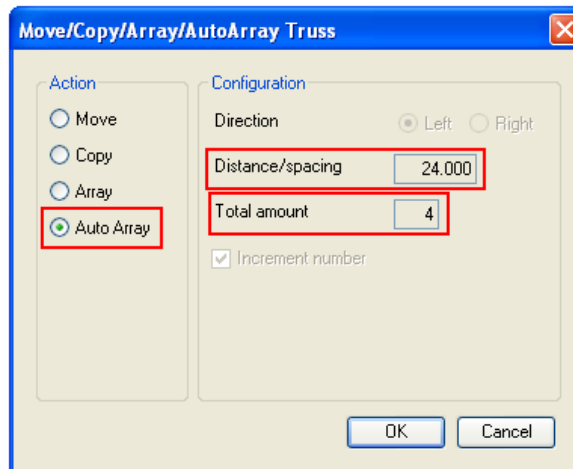
Modify Truss

If it is needed, Heel can be added.

- Define the *Heel height* value.



- Set *Spacing*. This value will be set automatically using the *AutoArray* function.



Increase your productivity !



AGA CAD Ltd.
Zalgirio 112A, LT-09300 Vilnius,
Lithuania
Tel. +370 5 2398111
Fax +370 5 2398113
Email info@aga-cad.lt
info@tools4revit.com
www.tools4revit.com