



# Truss+ 2010

## Insert Truss by Selected Model Line

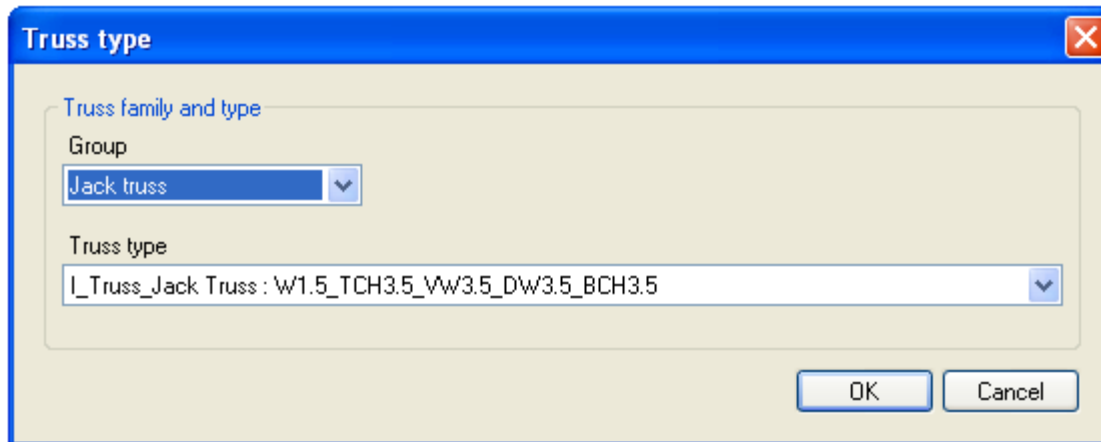
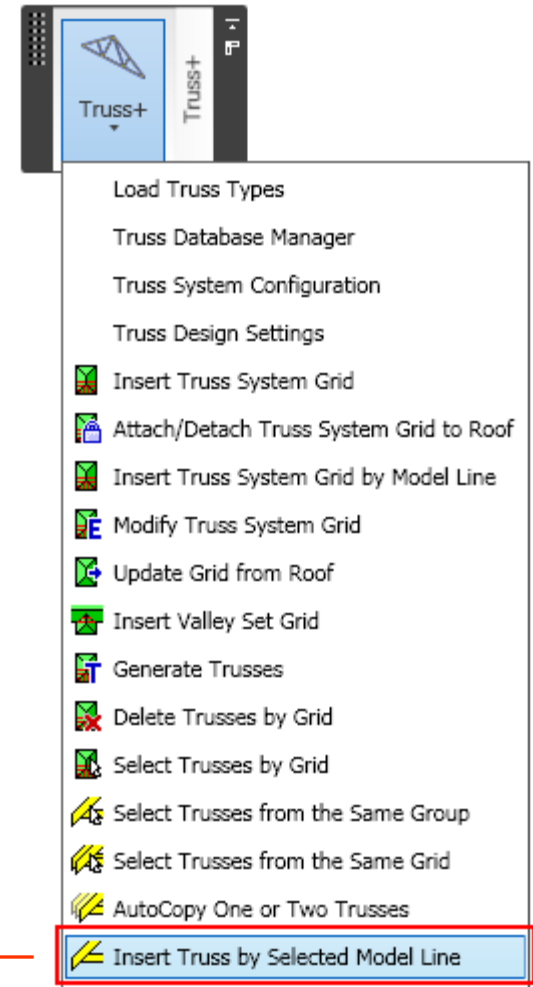
Jack trusses



# Insert Truss by Selected Model Line

- Select Model line
- Choose the *Insert Truss by Selected Model line* option from “Truss+” menu.
- Pick *Jack truss* in the “Truss type” dialog.

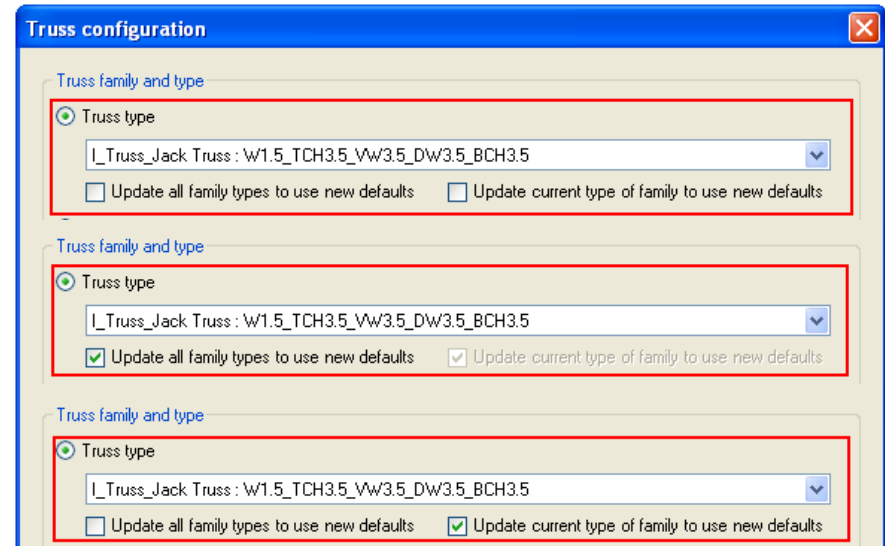
Start point of Model line will be the start point of Truss and End point of Model line - the end point of Truss.



# Insert Truss by Selected Model Line

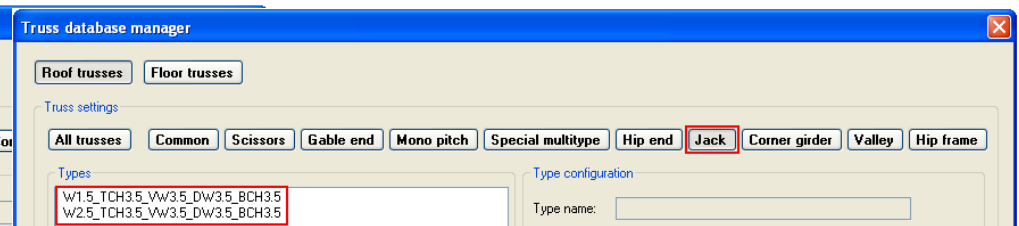
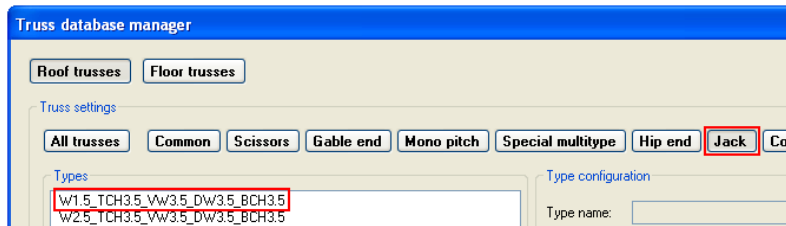
In a coming dialog the user can modify instance parameters of the inserted truss, update default parameters of the current family or create a new one.

- Change instance parameters of a selected truss (default values of instance parameters remain the same).
- Change instance parameters of a selected truss and update **all family types** to use new defaults (all Truss types created by Database manager).
- Change instance parameters of a selected truss and update **current type of family** to use new defaults.



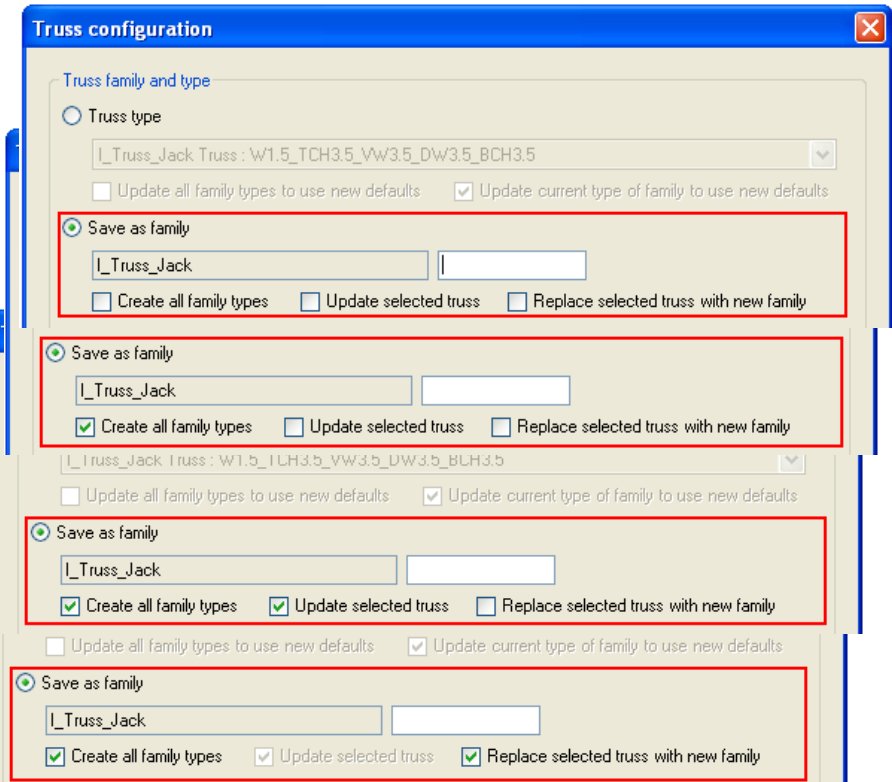
Current type of family

All family types



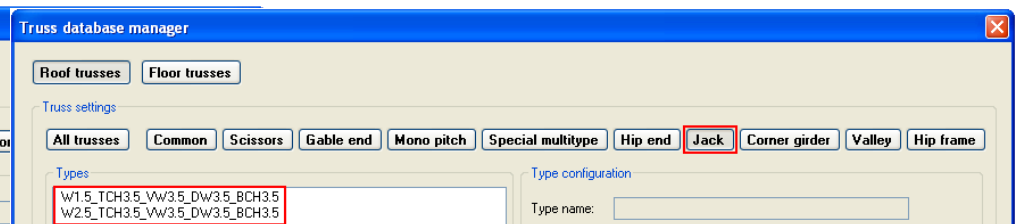
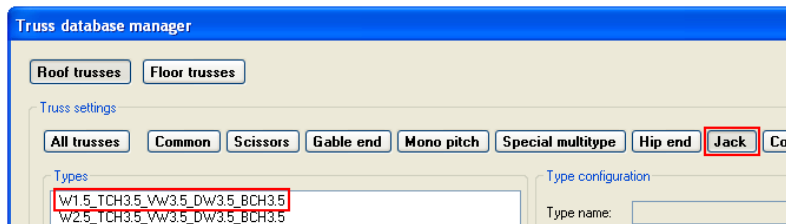
# Insert Truss by Selected Model Line

- Create a new family additionally (one type, as selected one) without updating selected one.
- Create **all Jack truss new family types** (all Truss types created by Database manager) without updating selected one.
- Create new **Jack truss family types** and update instance parameters of **selected truss**.
- Create new **Jack truss family types** and replace **selected truss** with new family.



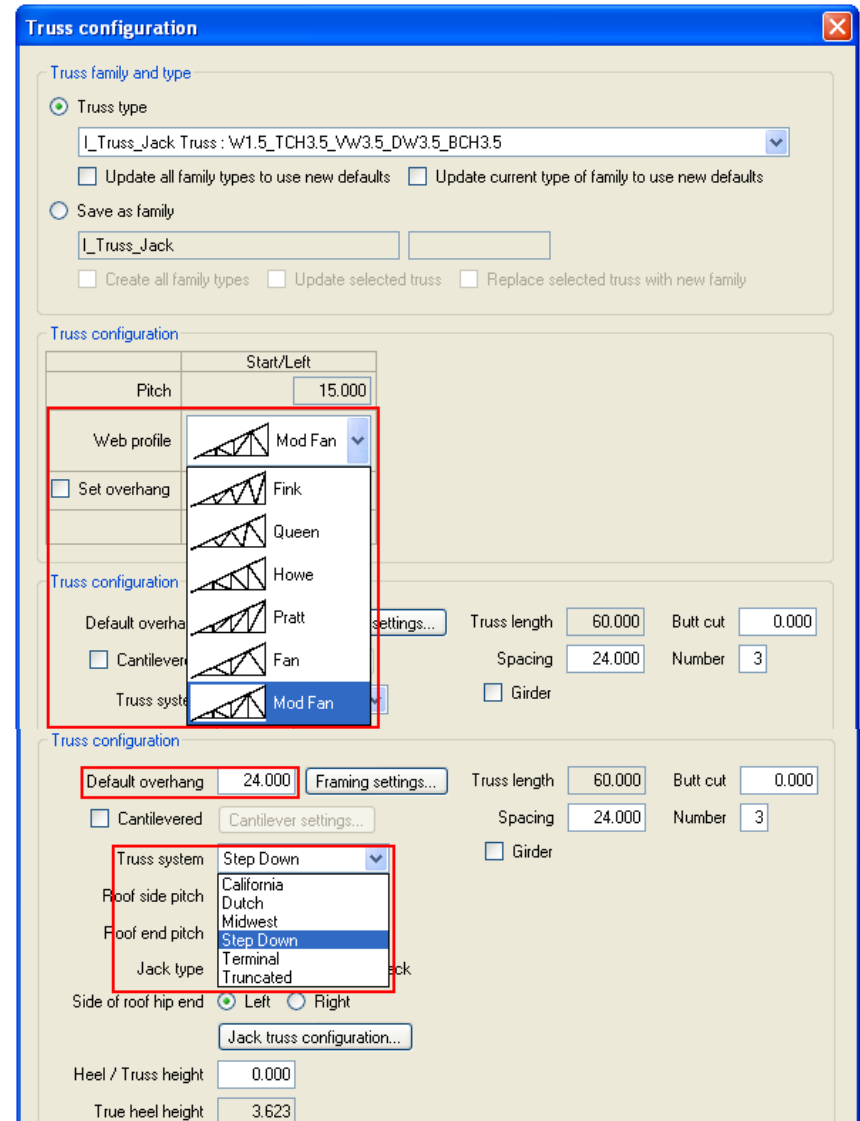
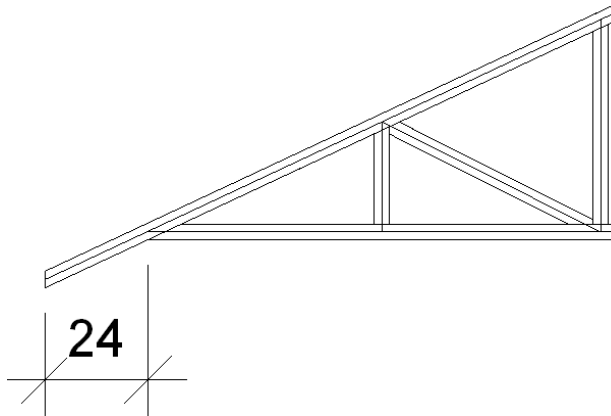
Current type of family

All family types



# Insert Truss by Selected Model Line

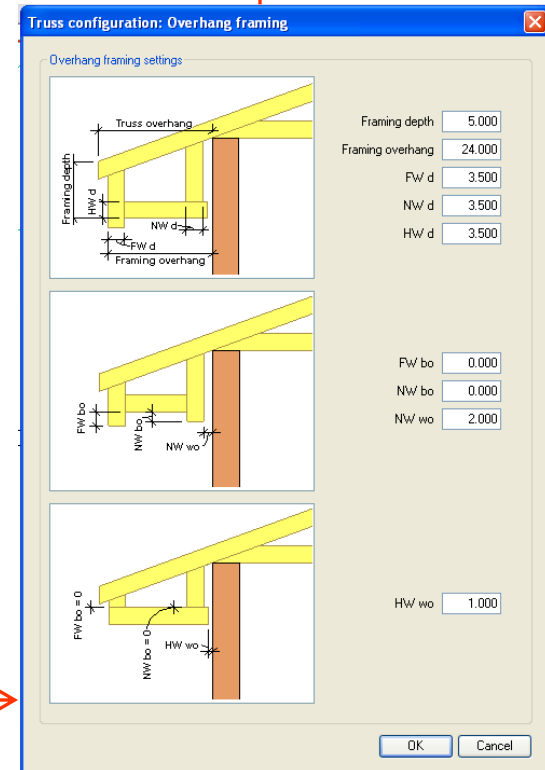
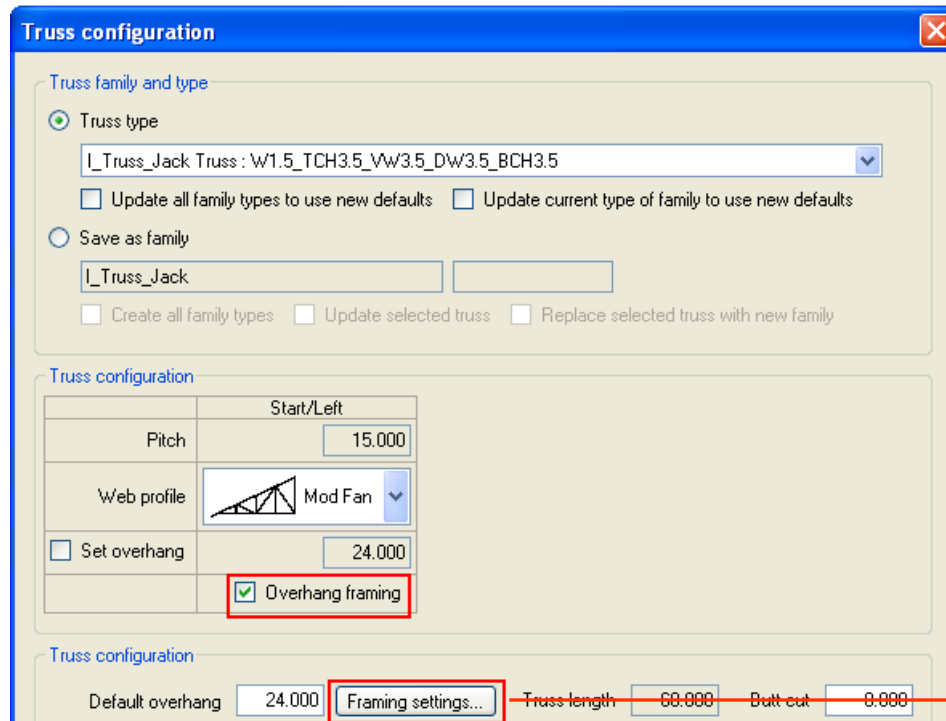
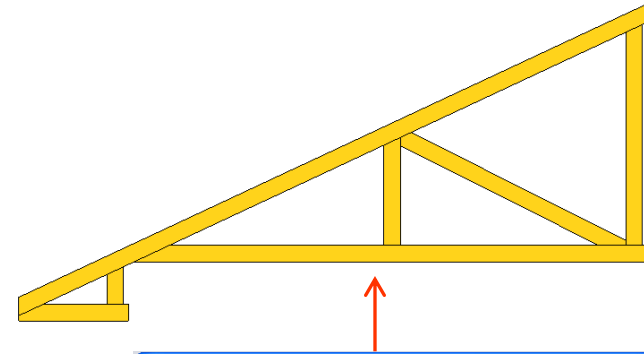
- Select *Web profile*.
- Switch On the *Set overhang* option and define an overhang length value if it is different from default.
- If not, define the *Default overhang* length value.
- Select *Truss system* type.





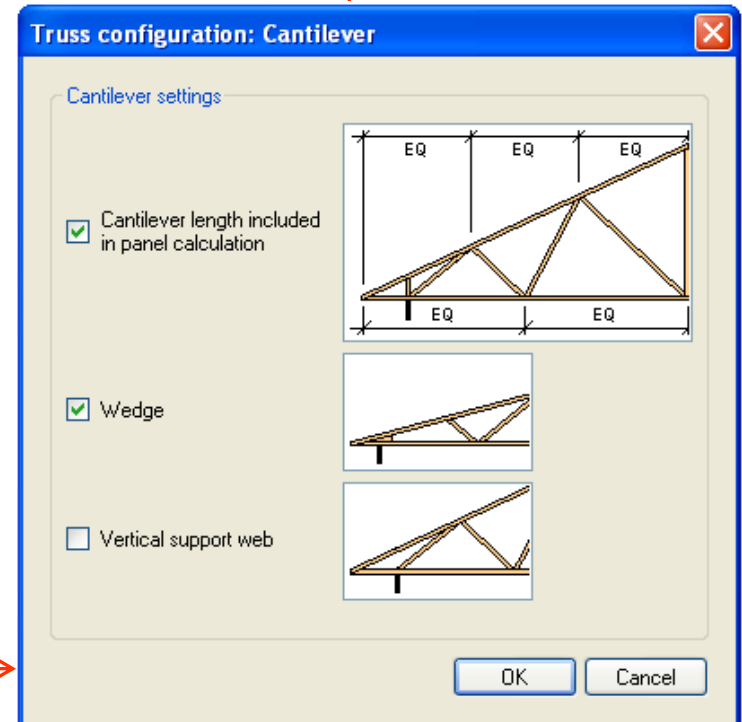
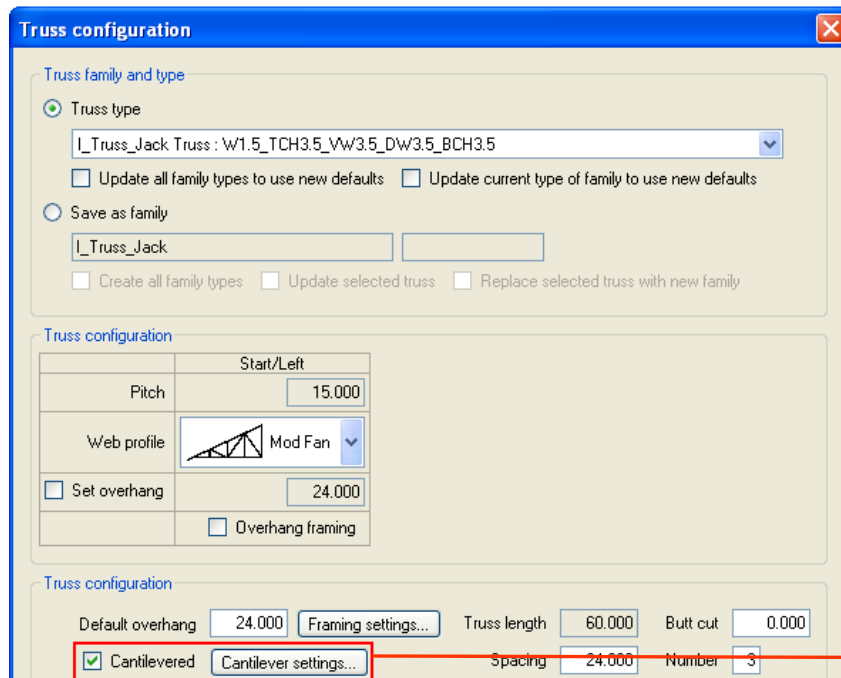
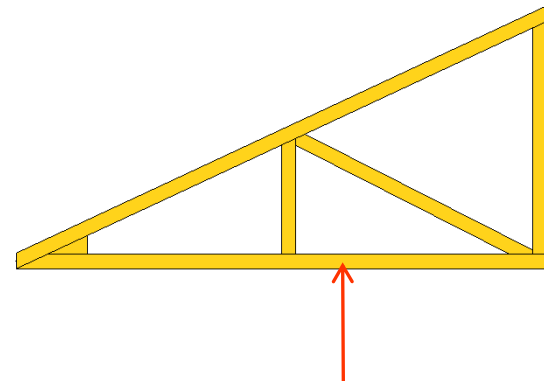
# Insert Truss by Selected Model Line

- Switch On the *Overhang framing* option if it's needed.
- Define *Overhang framing settings*.



# Insert Truss by Selected Model Line

- Switch On the *Cantilevered* check box if it's needed.
- Define *Cantilever settings*.



# Insert Truss by Selected Model Line

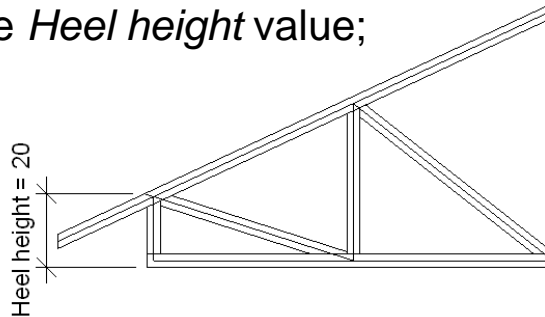
The height of the jack truss is determined of roof hip end.

- Set *Roof side pitch and Roof end pitch* values.

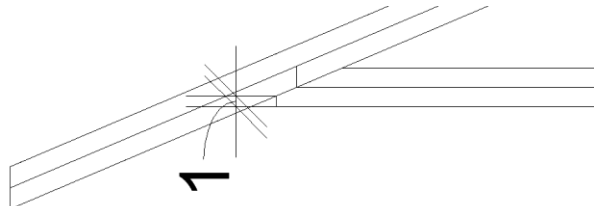
The height of the Jack truss will be calculated automatically considering defined value.

If it is needed, the Heel can be added.

- Define *Heel height* value;



- Define *Butt cut value* if it is needed.



The screenshot shows the 'Truss configuration' dialog box with the following settings:

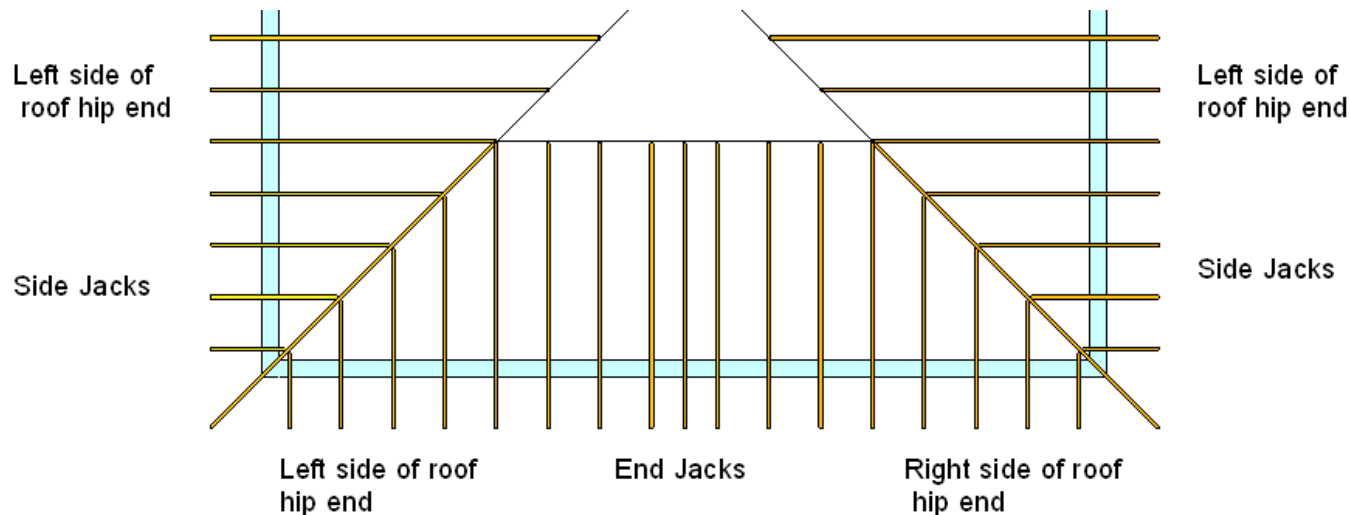
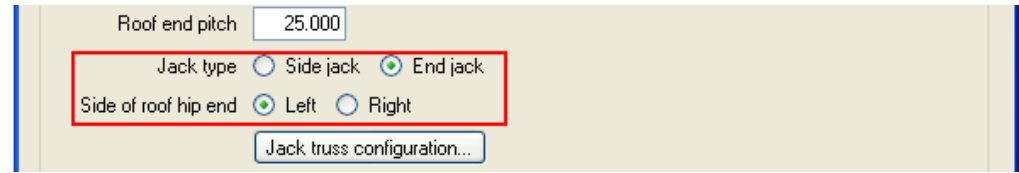
- Truss family and type:**
  - Truss type
  - Truss type: *I\_Truss\_Jack Truss : W1.5\_TCH3.5\_VW3.5\_DW3.5\_BCH3.5*
  - Update all family types to use new defaults
  - Update current type of family to use new defaults
  - Save as family
  - Family name: *I\_Truss\_Jack*
  - Create all family types
  - Update selected truss
  - Replace selected truss with new family
- Truss configuration:**
  - Pitch: 25.000
  - Web profile: *Mod Fan*
  - Set overhang: 24.000
  - Overhang framing
- Truss configuration:**
  - Default overhang: 24.000
  - Cantilevered
  - Truss system: *Step Down*
  - Roof side pitch: 25.000
  - Roof end pitch: 25.000
  - Jack type:  Side jack,  End jack
  - Side of roof hip end:  Left,  Right
  - Heel / Truss height: 20.000
  - True heel height: 20.000
  - Set station / Setback: 84.000
  - Set roof ridge: 150.000
- Truss configuration:**
  - Truss length: 60.000
  - Butt cut: 1.000
  - Spacing: 24.000
  - Number: 3
  - Girder

Buttons: OK, Cancel



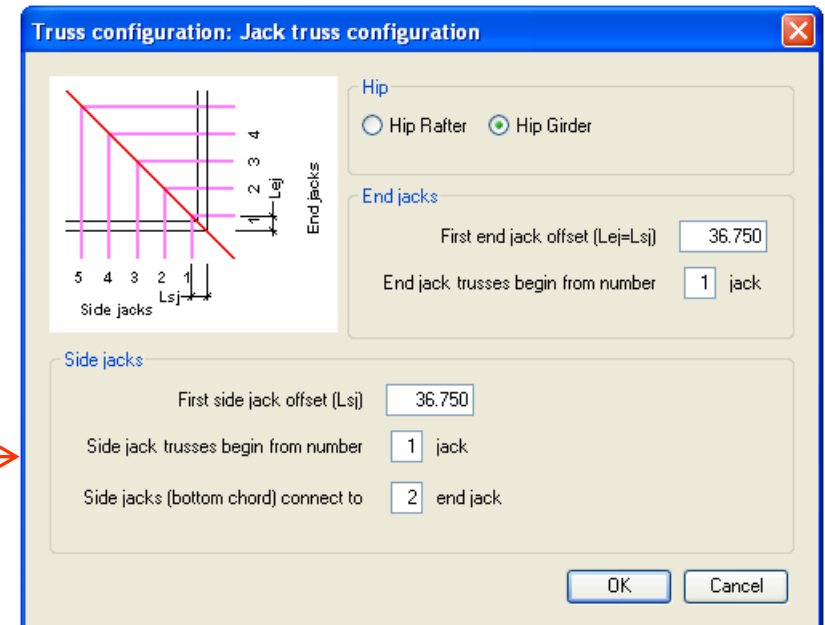
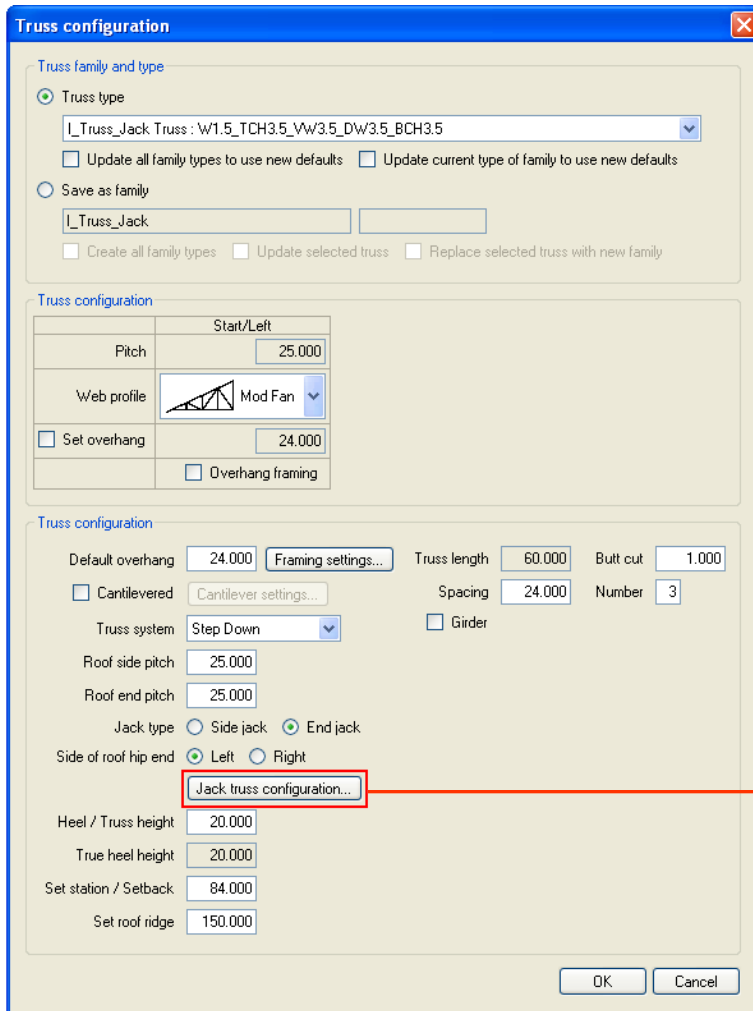
# Insert Truss by Selected Model Line

It is very important to indicate *Jack type (Side or End jack)* and *Side of the roof hip end (Left or Right)* to get right height and length of the jack truss.



# Insert Truss by Selected Model Line

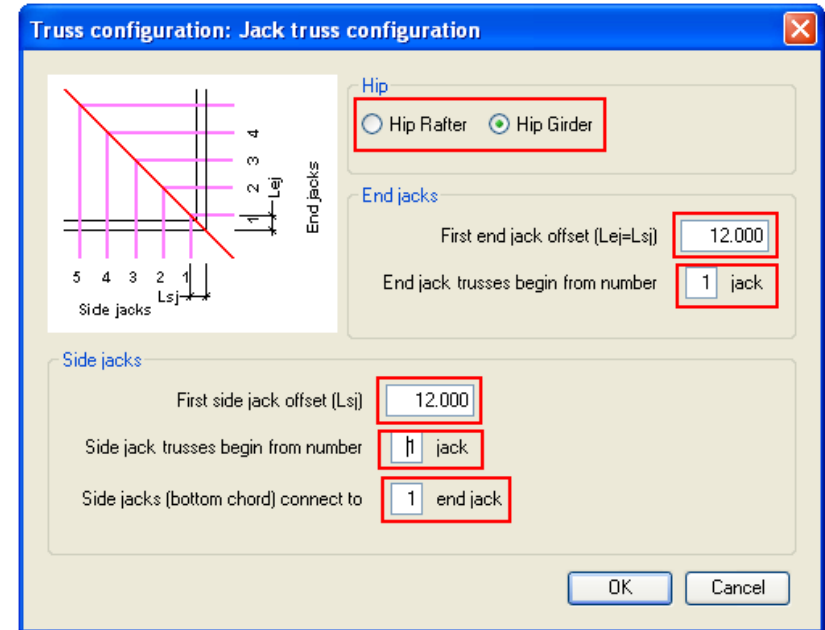
- In order to set side and end jacks parameters, select *Jack truss configuration*.



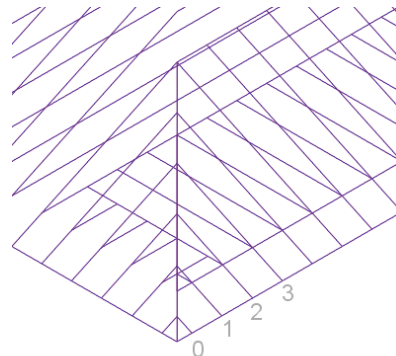
# Insert Truss by Selected Model Line

In 'Jack truss configuration' the user has to define these parameters:

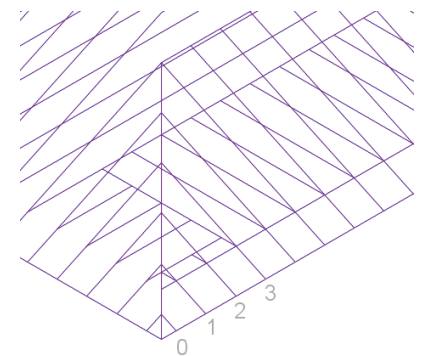
- Select hip (corner girder) type;
- $L_{sr}$  – a distance between the wall core external face and the first end or side jack truss external face;
- *End/Side jack trusses begin from number* – describes from which element end/side jack trusses are generated;
- *Side jacks (bottom chord) connect to* - side jacks bottom chords will connect to the indicated end jack truss if the hip rafter is selected.



Side jacks (bottom chord) connect to 2 end jack



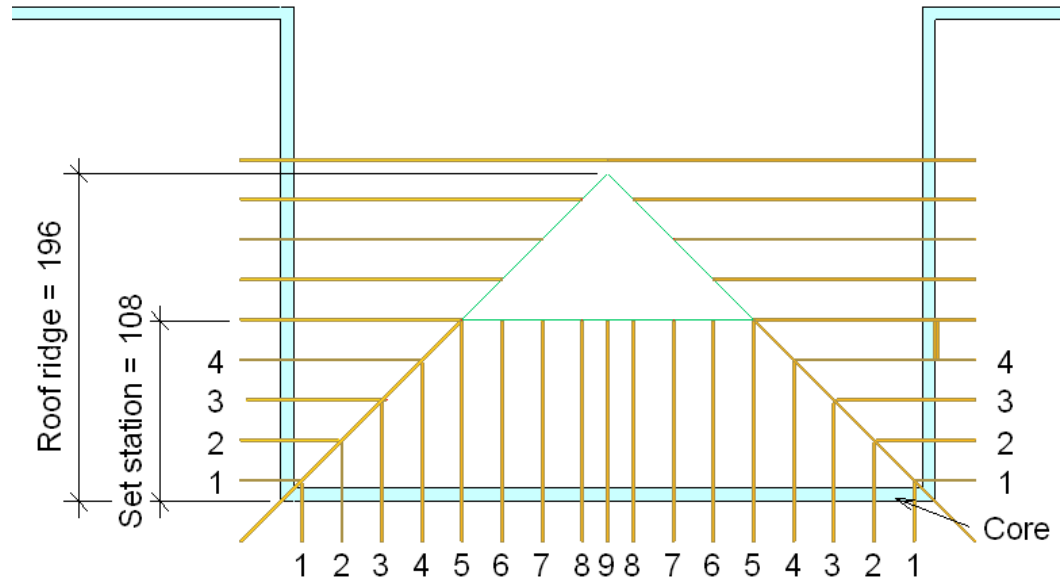
Side jacks (bottom chord) connect to 3 end jack



# Insert Truss by Selected Model Line

In order to get a proper quantity, right height and length of jack trusses the user has to:

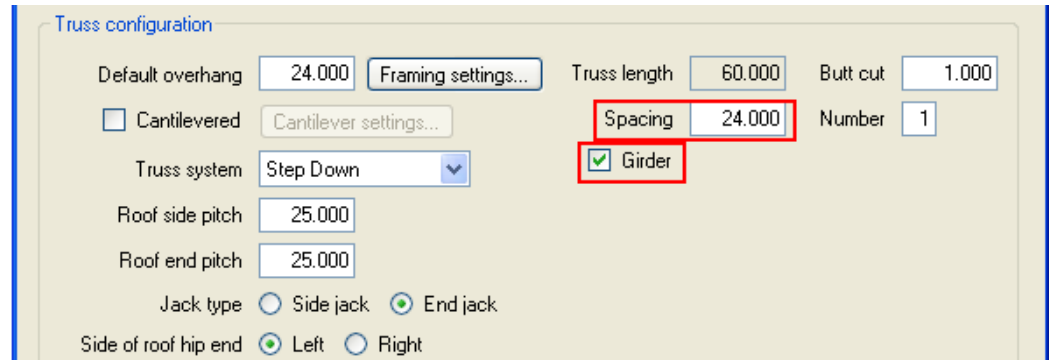
- Define *Set station/Setback* distance;
- *Set roof ridge*;
- Define the *Number* of the jack truss.



Default overhang	24.000	Framing settings...	Truss length	60.000	Butt cut	1.000
<input type="checkbox"/> Cantilevered	Cantilever settings...		Spacing	24.000	Number	1
Truss system	Step Down		<input type="checkbox"/> Girder			
Roof side pitch	25.000					
Roof end pitch	25.000					
Jack type	<input type="radio"/> Side jack <input checked="" type="radio"/> End jack					
Side of roof hip end	<input checked="" type="radio"/> Left <input type="radio"/> Right					
	Jack truss configuration...					
Heel / Truss height	20.000					
True heel height	20.000					
Set station / Setback	108.000					
Set roof ridge	196.000					

# Insert Truss by Selected Model Line

- User can switch On the *Girder* check box. This option is useful for sorting and scheduling.



Truss configuration

Default overhang  Framing settings... Truss length  Butt cut

Cantilevered Cantilever settings...  Spacing  Number

Truss system   Girder

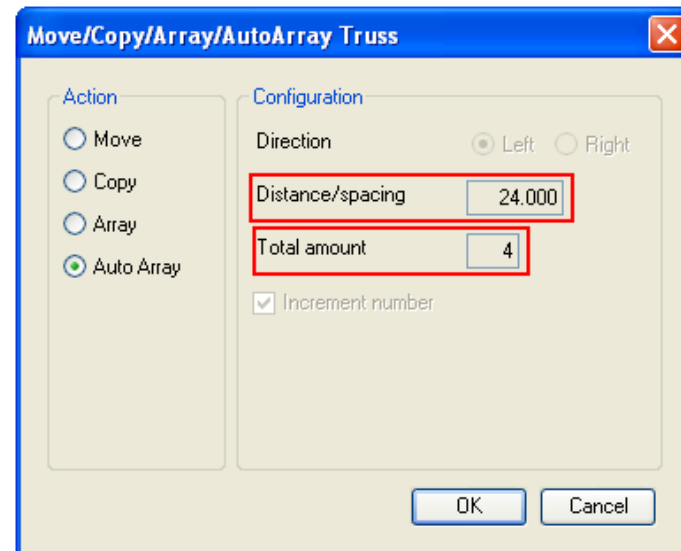
Roof side pitch

Roof end pitch

Jack type  Side jack  End jack

Side of roof hip end  Left  Right

- Set *Spacing*. This value will be used to calculate the proper quantity of jack trusses and will be set automatically using the *AutoArray* function.



Move/Copy/Array/AutoArray Truss

Action

Move

Copy

Array

Auto Array

Configuration

Direction  Left  Right

Distance/spacing

Total amount

Increment number

OK Cancel

# Increase your productivity !



AGA CAD Ltd.  
Zalgirio 112A, LT-09300 Vilnius,  
Lithuania  
Tel. +370 5 2398111  
Fax +370 5 2398113  
Email [info@aga-cad.lt](mailto:info@aga-cad.lt)  
[info@tools4revit.com](mailto:info@tools4revit.com)  
[www.tools4revit.com](http://www.tools4revit.com)