



Truss+ 2010

Insert Truss by Selected Model Line

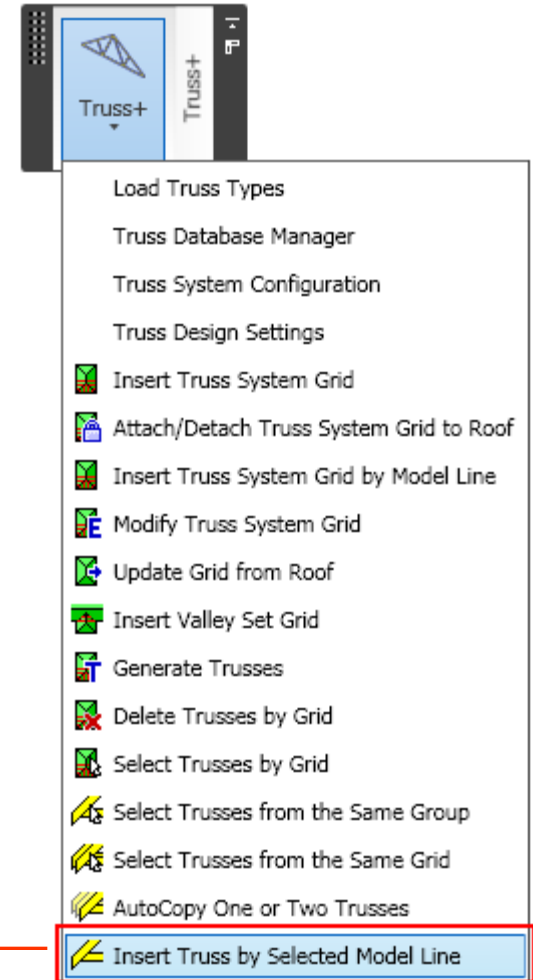
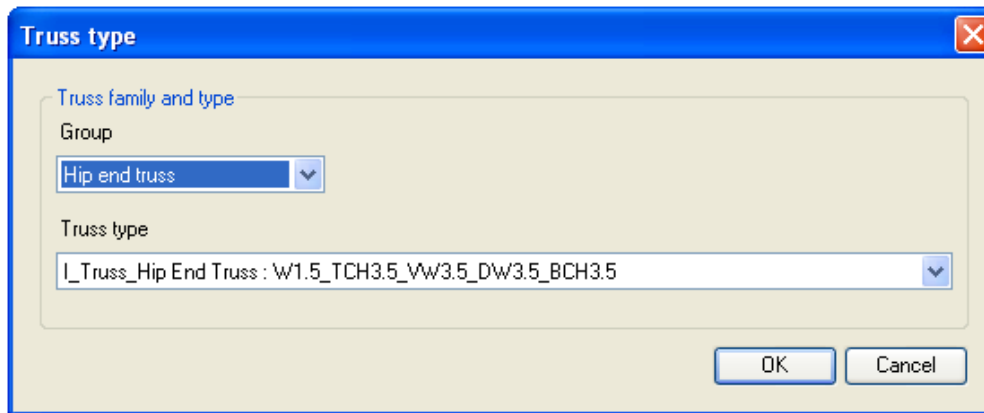
Hip end truss



Insert Truss by Selected Model Line

- Select Model line.
- Choose the *Insert Truss by Selected Model line* option from “Truss+” menu.
- Pick *Hip end truss* in the “Truss type” dialog.

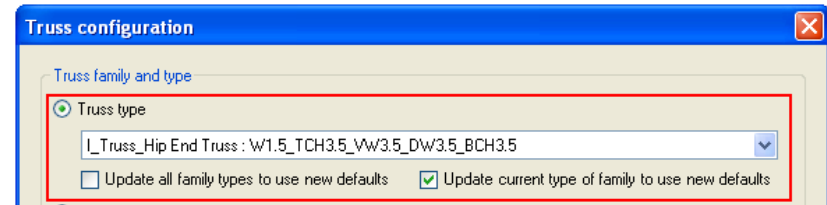
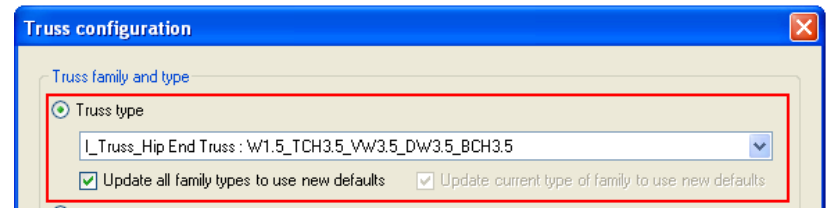
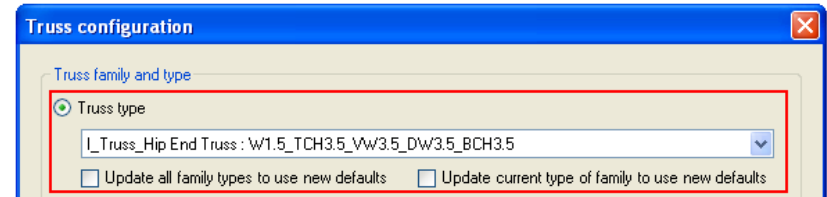
Start point of Model line will be the start point of Truss and End point of Model line - the end point of Truss.



Insert Truss by Selected Model Line

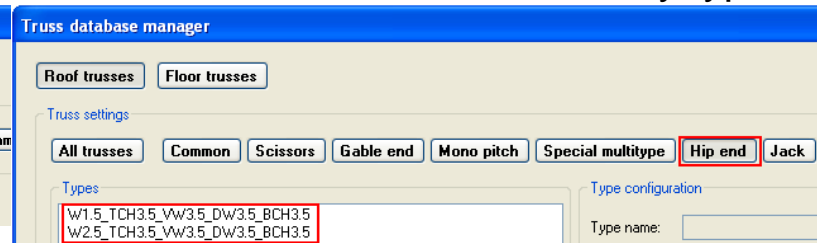
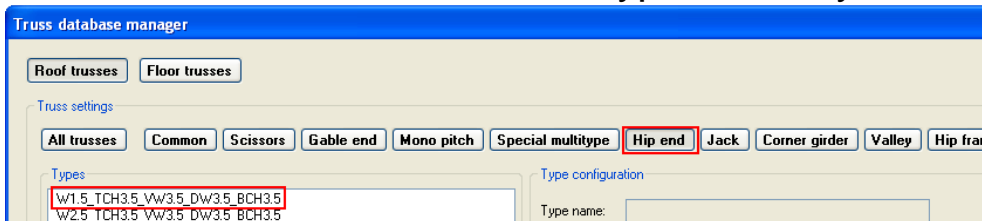
In a coming dialog the user can modify instance parameters of inserted truss, update default parameters of the current family or create a new one.

- Change instance parameters of a selected truss (default values of instance parameters remain the same).
- Change instance parameters of a selected truss and update **all family types** to use new defaults (all Truss types created by Database manager).
- Change instance parameters of a selected truss and update **current type of family** to use new defaults.



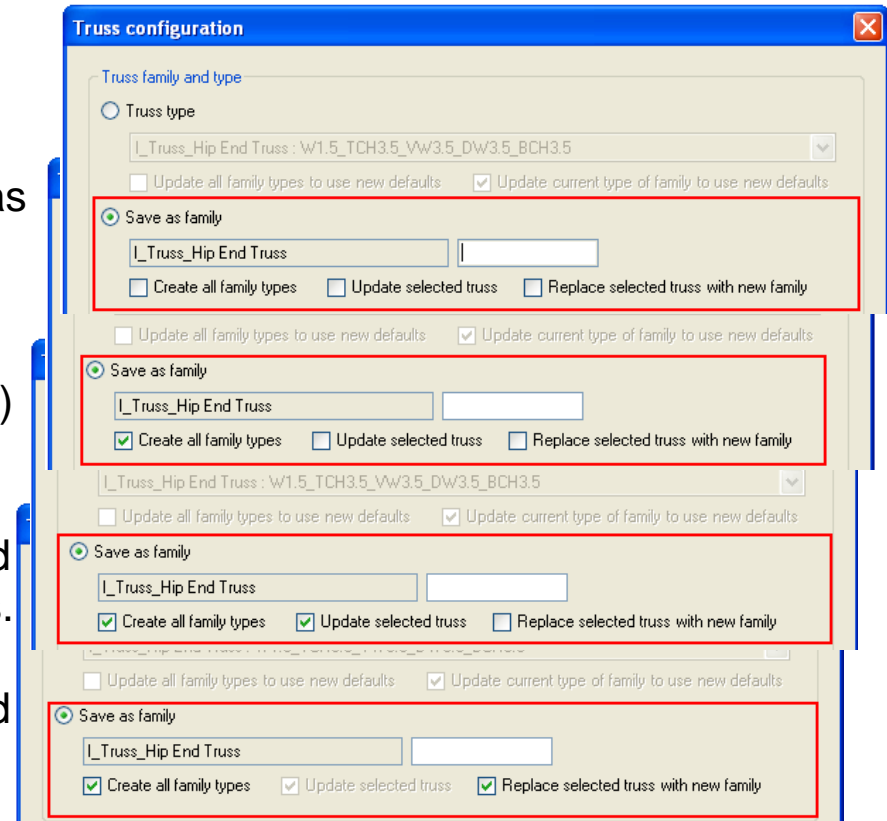
Current type of family

All family types



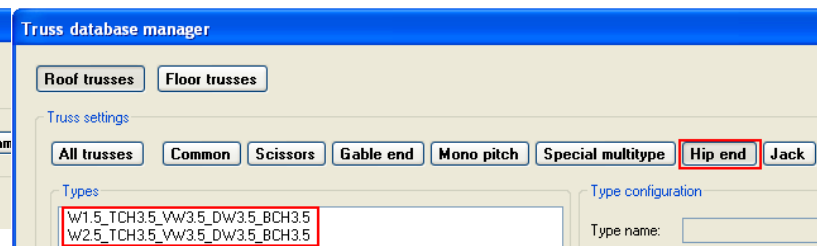
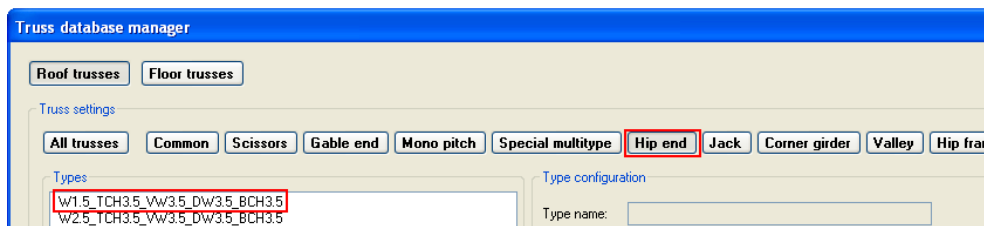
Insert Truss by Selected Model Line

- Create a new family additionally (one type, as selected one) without updating selected one.
- Create **all Hip end truss new family types** (all Truss types created by Database manager) without updating selected one.
- Create new **Hip end truss family types** and update instance parameters of **selected truss**.
- Create new **Hip end truss family types** and replace **selected truss** with a new family.

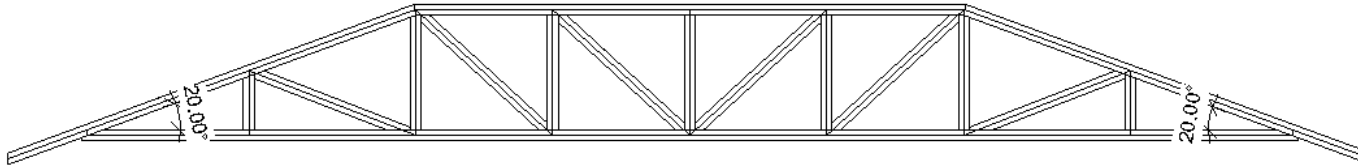


Current type of family

All family types



Insert Truss by Selected Model Line



Define parameters:

- *Pitch*;
- *Web profile* for every part of the truss.

Truss configuration

Truss family and type

Truss type

I_Truss_Hip End Truss : W1.5_TCH3.5_VW3.5_DW3.5_BCH3.5

Update all family types to use new defaults Update current type of family to use new defaults

Save as family

I_Truss_Hip End Truss

Create all family types Update selected truss Replace selected truss with new family

Truss configuration

	Start/Left	Middle	End/Right
Pitch	20.000		20.000
Web profile	Howe	2 x Howe	Howe
<input type="checkbox"/> Set overhang	Fink		24.000
	Queen		<input type="checkbox"/> Overhang framing
	Howe		

Truss configuration

Default overhang settings...

Cantilever

Truss system: Mod Fan

Truss length: 302.000 Butt cut: 0.000

Spacing: 24.000 Number: 1

Girder

Quantity: 3

Roof end pitch: 20.000

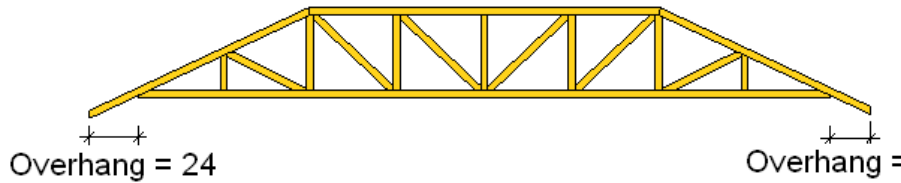
Heel / Truss height: 0.000

True heel height: 3.725

Set station / Setback: 84.000

OK Cancel

Insert Truss by Selected Model Line



- Switch On the *Set overhang* option and define *Start* and *End* overhang value if they are different.
- If not, define *Default overhang value*.
- Select the *Truss system* type.

Truss configuration

Truss family and type

Truss type

I_Truss_Hip End Truss : w1.5_TCH3.5_Vw3.5_DW3.5_BCH3.5

Update all family types to use new defaults Update current type of family to use new defaults

Save as family

I_Truss_Hip End Truss

Create all family types Update selected truss Replace selected truss with new family

Truss configuration

	Start/Left	Middle	End/Right
Pitch	20.000		20.000
Web profile	Howe	2 x Howe	Howe
<input checked="" type="checkbox"/> Set overhang	20.000		24.000
	<input type="checkbox"/> Overhang framing		<input type="checkbox"/> Overhang framing

Truss configuration

Default overhang 24.000 Framing settings...

Cantilevered Cantilever settings...

Truss system Step Down

Roof end pitch California

Heel / Truss height Step Down

Truncated

True heel height 3.725

Set station / Setback 84.000

Truss length 302.000 Butt cut 0.000

Spacing 24.000 Number 1

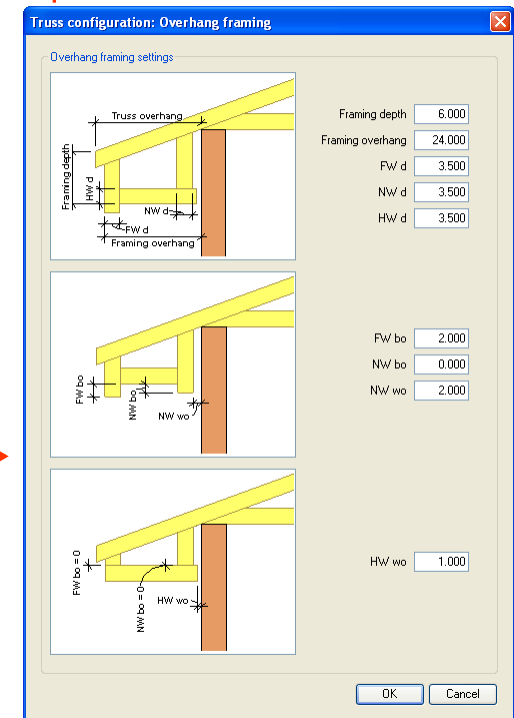
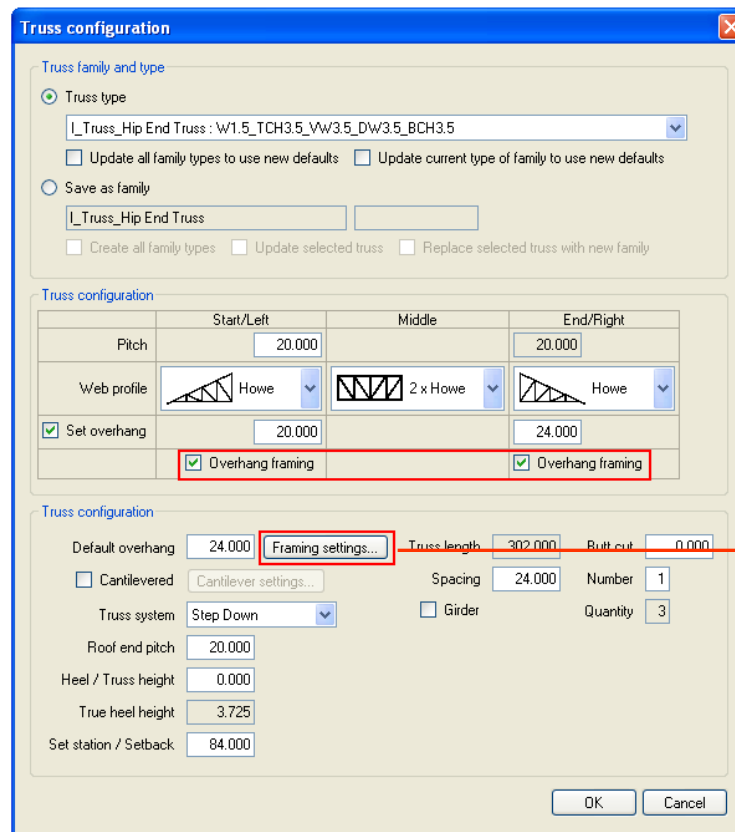
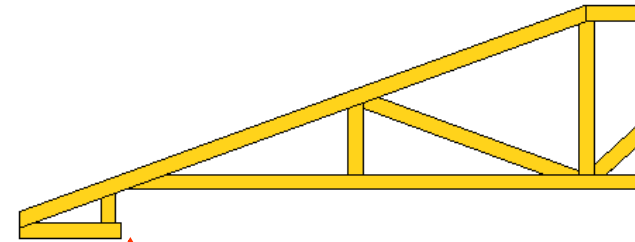
Girder Quantity 3

OK Cancel

Insert Truss by Selected Model Line

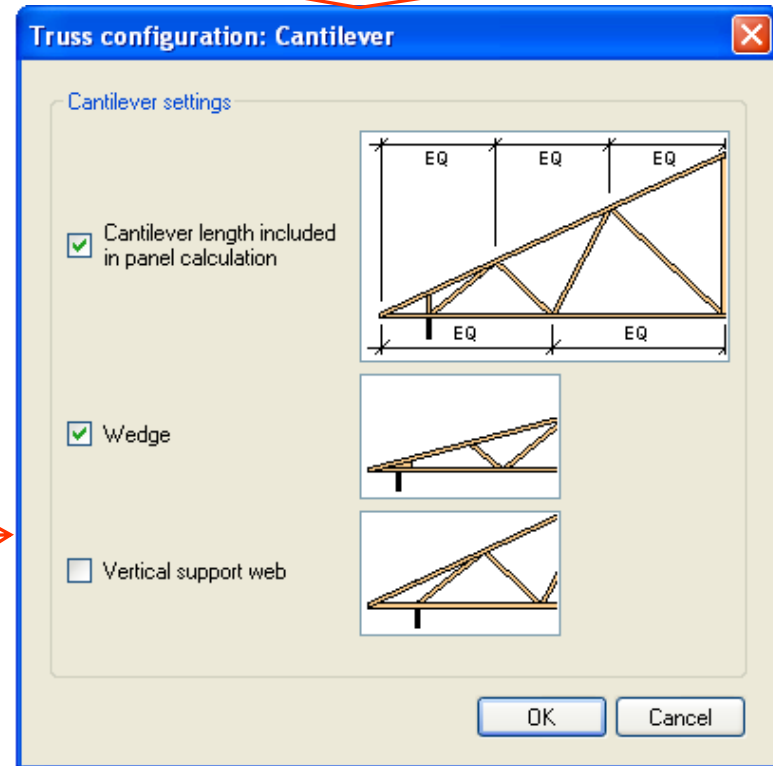
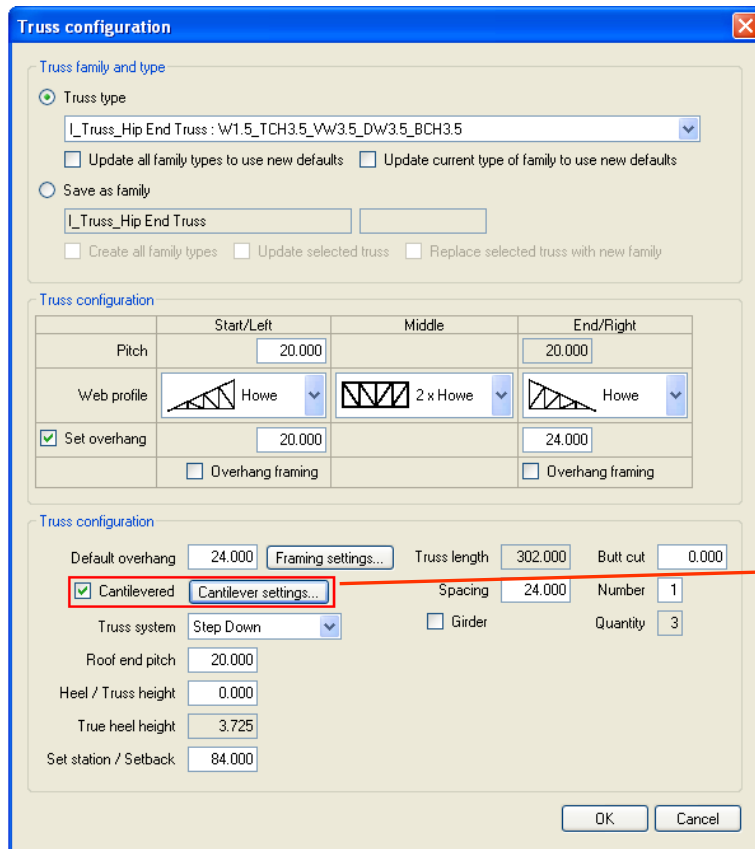
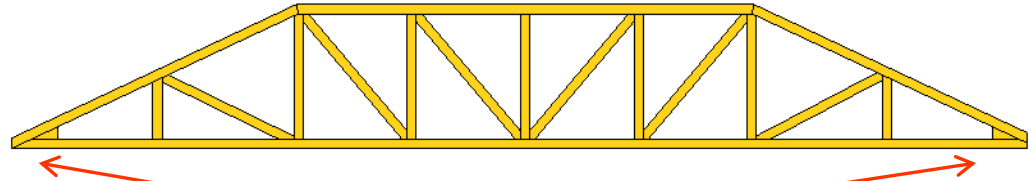
- Switch On the option *Overhang framing* if it's needed.
- Define *Overhang framing settings*.

User can define different value of an overhang length on Start and End points of the truss.



Insert Truss by Selected Model Line

- Switch On the *Cantilevered* check box if it's needed.
- Define *Cantilever settings*.

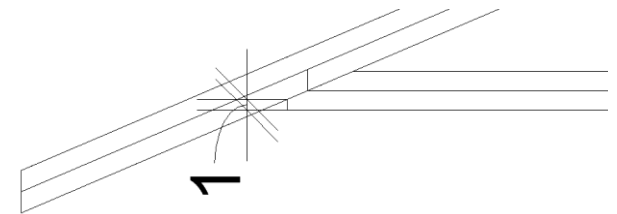
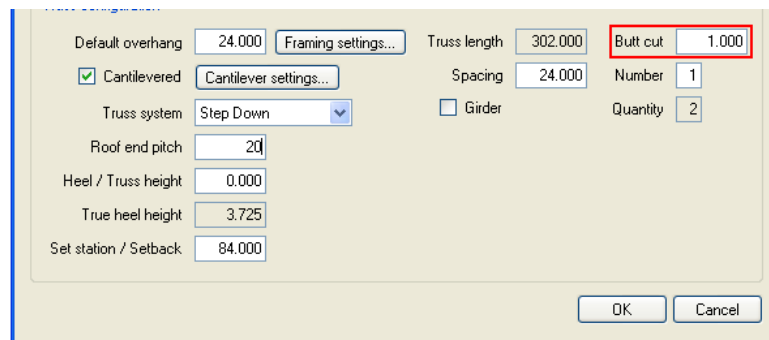
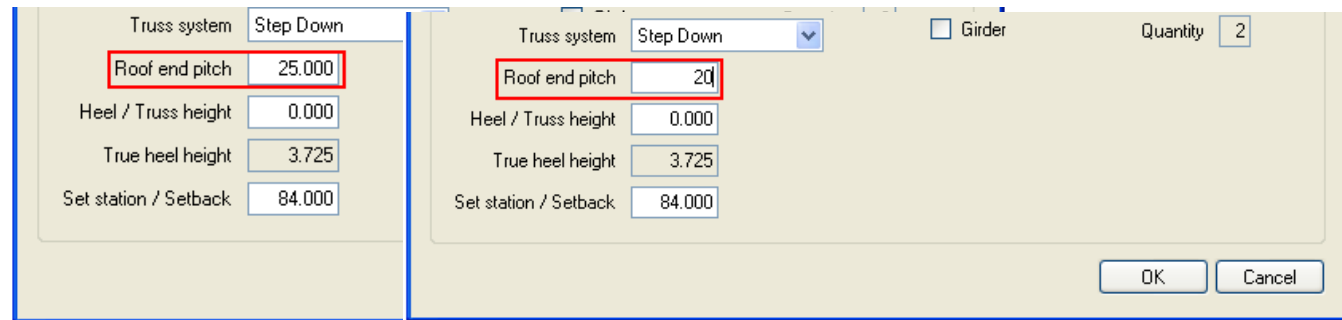
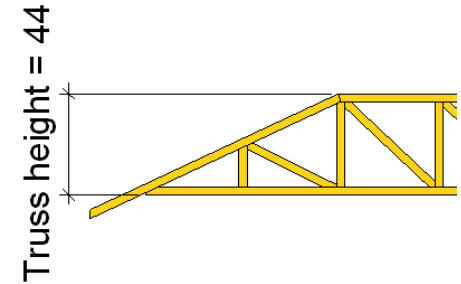
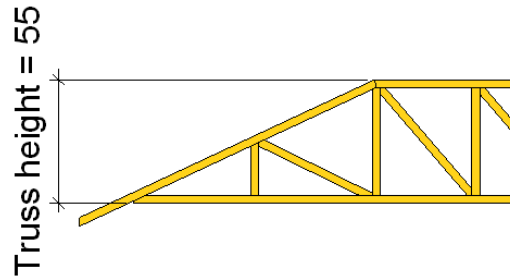


Insert Truss by Selected Model Line

Very often the height of the truss is determinate of the roof hip end.

- Set *Roof end pitch*, “Truss+” will calculate the truss height considering defined value automatically.

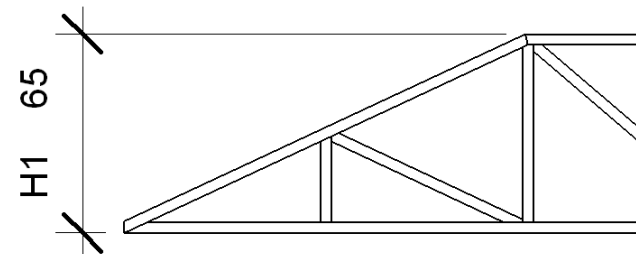
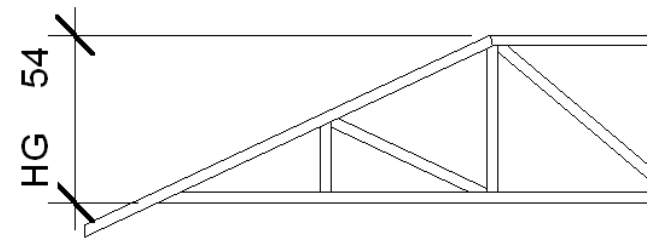
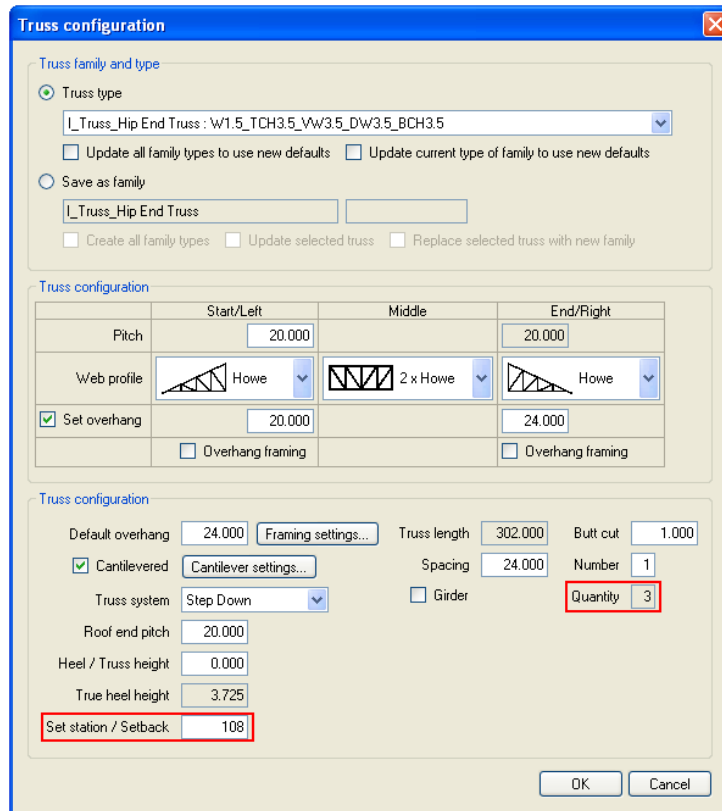
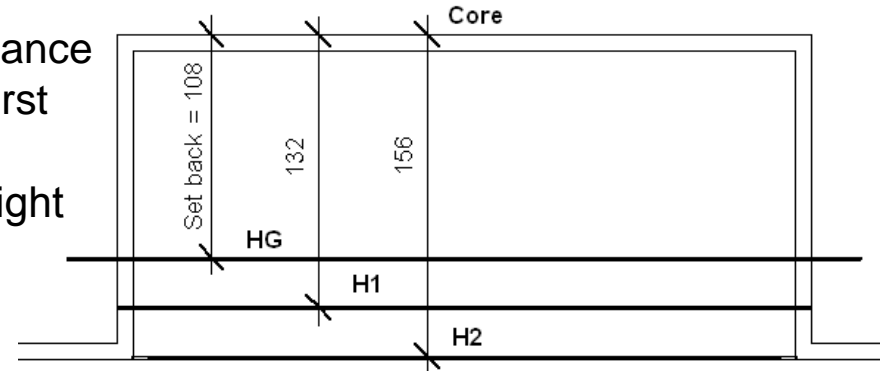
- Define *Butt cut* value if it is needed.



Insert Truss by Selected Model Line

- Define the *Set station/Setback* value (a distance between the wall core external face and the first truss external face).

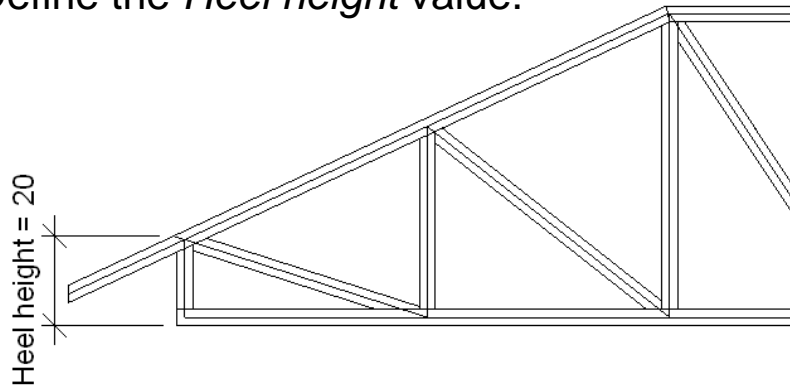
Considering this value “Truss+” calculates height and proper *Quantity* of Hip end trusses.



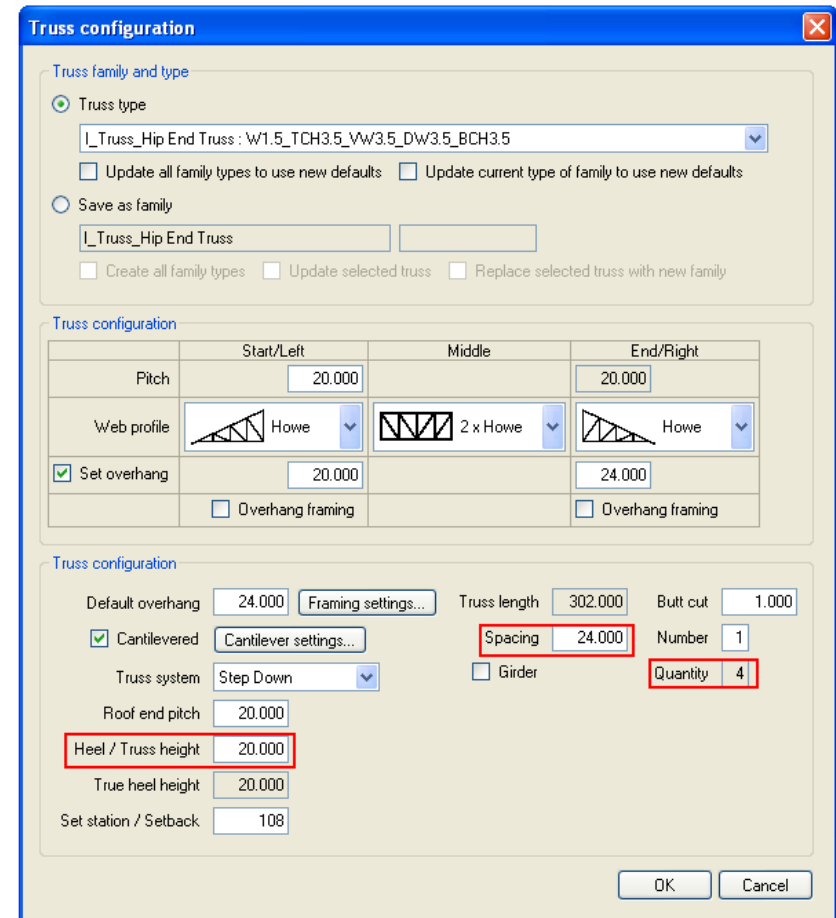
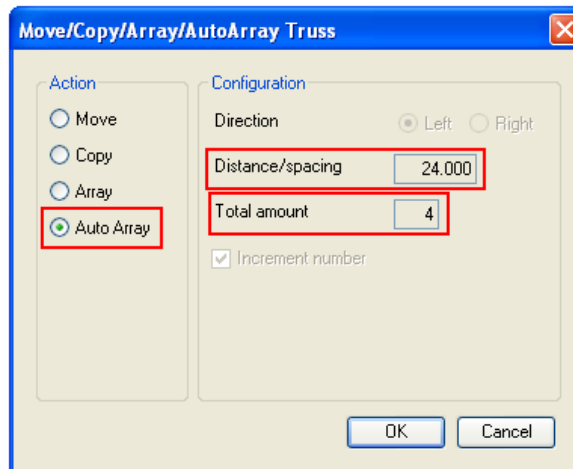
Insert Truss by Selected Model Line

If it is needed, Heel can be added.

- Define the *Heel height* value.



- Set *Spacing*. This value will be set automatically using the *AutoArray* function.



Increase your productivity !



AGA CAD Ltd.
Zalgirio 112A, LT-09300 Vilnius,
Lithuania
Tel. +370 5 2398111
Fax +370 5 2398113
Email info@aga-cad.lt
info@tools4revit.com
www.tools4revit.com