



Truss+ 2010

Insert Truss by Selected Model Line

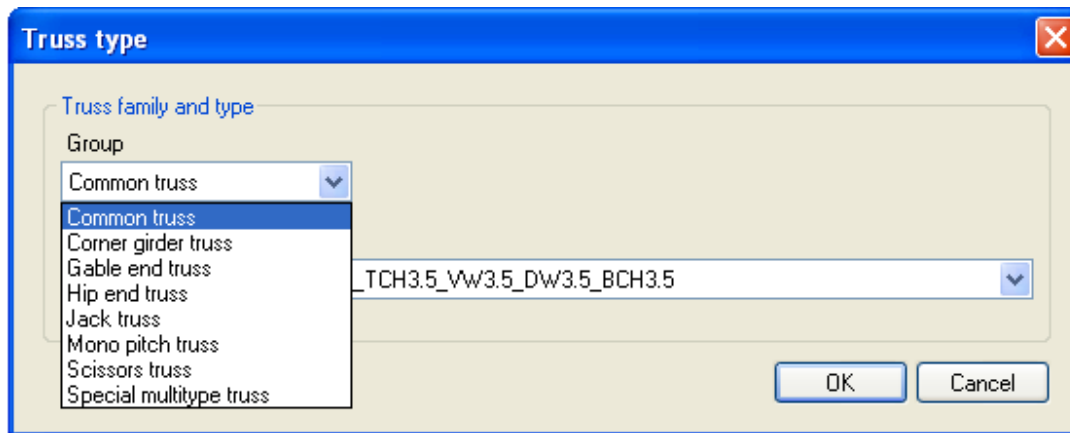
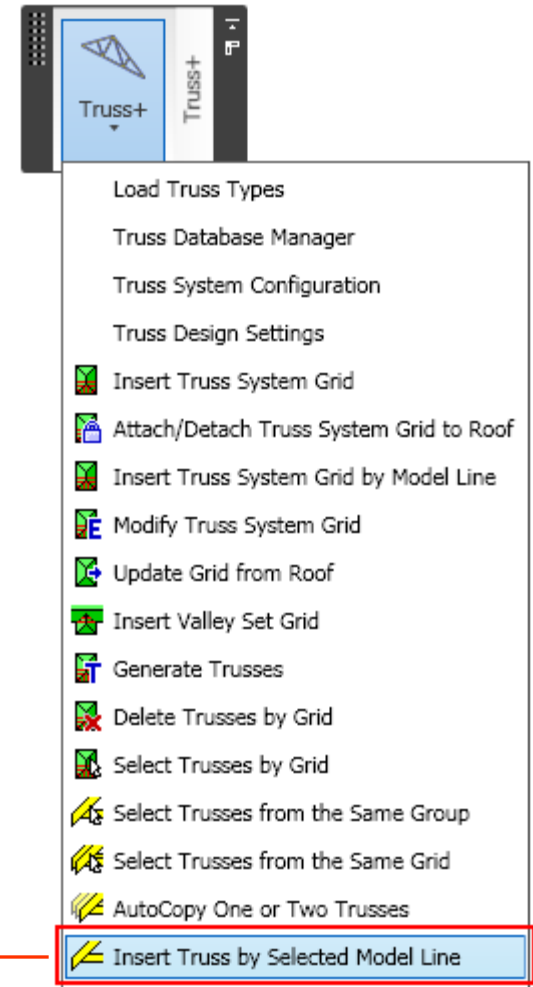
Common trusses



Insert Truss by Selected Model Line

- Select Model line
- Choose the *Insert Truss by Selected Model line* option from “Truss+” menu.
- Pick *Common truss* in the “Truss type” dialog.

Start point of Model line will be the start point of Truss and End point of Model line - the end point of Truss.



Insert Truss by Selected Model Line

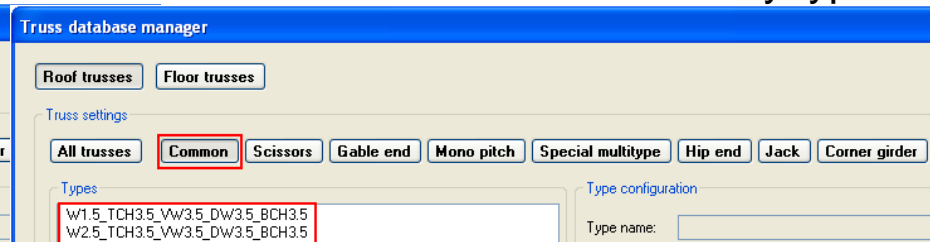
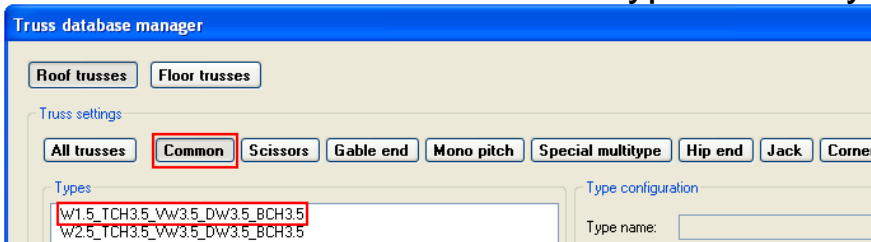
In a coming dialog the user can modify instance parameters of the inserted truss, update default parameters of the current family or create a new one.

- Change instance parameters of a selected truss (default values of instance parameters remain the same).
- Change instance parameters of a selected truss and update **all family types** to use new defaults (all Truss types created by Database manager).
- Change instance parameters of a selected truss and update **current type of family** to use a new default.



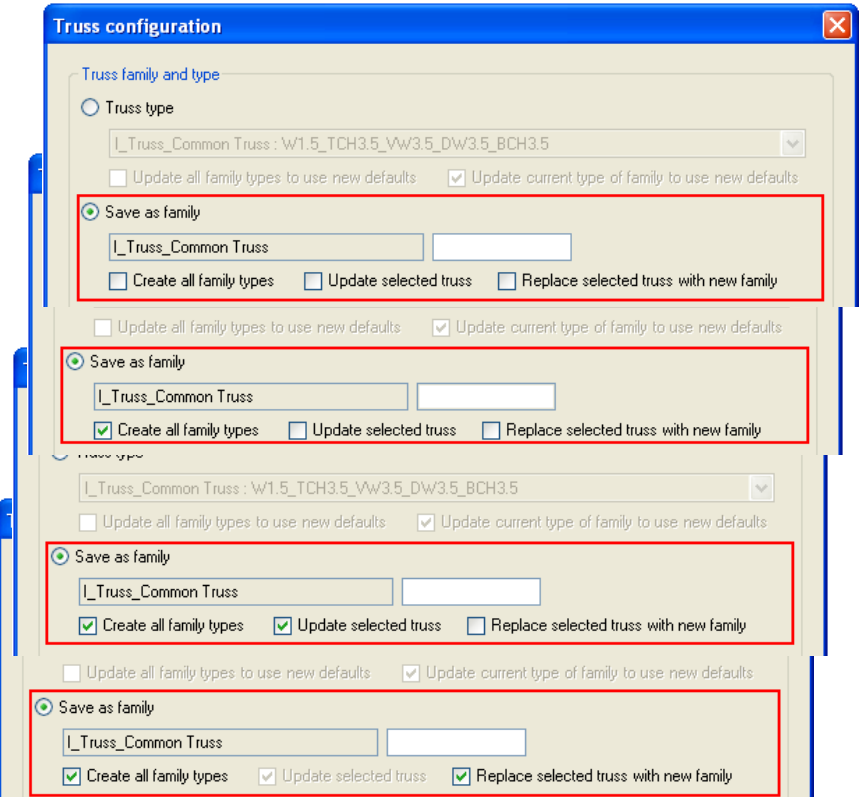
Current type of family

All family types



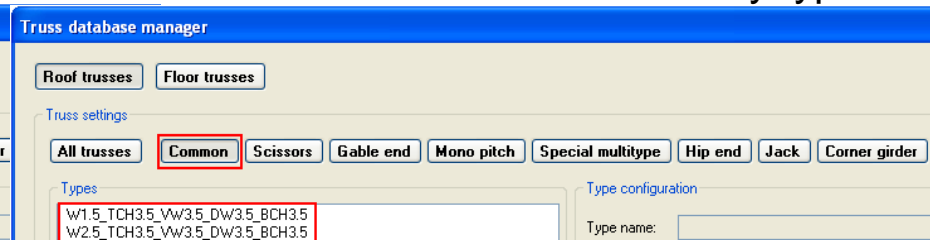
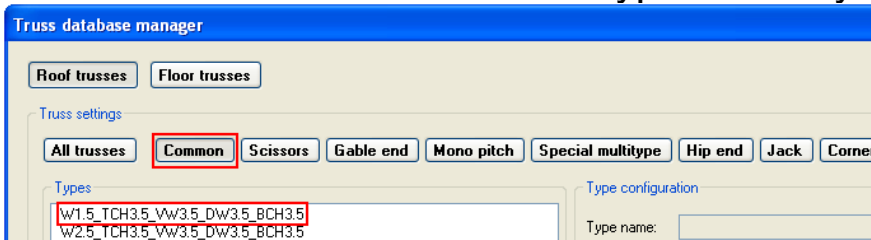
Insert Truss by Selected Model Line

- Create a new family additionally (one type, as selected one) without updating selected one.
- Create **all Common truss new family types** (all Truss types created by Database manager) without updating selected one.
- Create new **Common truss family types** and update instance parameters of **selected truss**.
- Create new **Common truss family types** and replace **selected truss** with a new family.



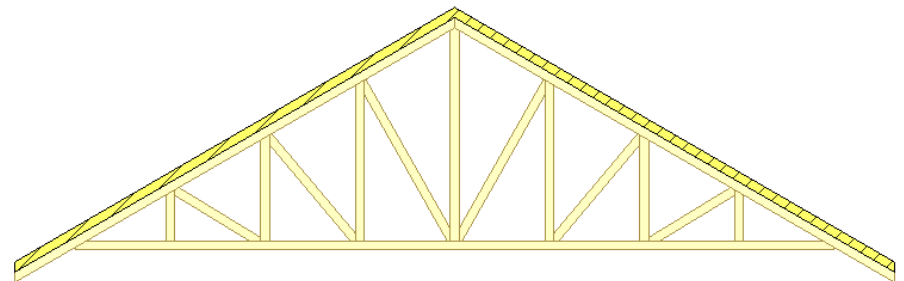
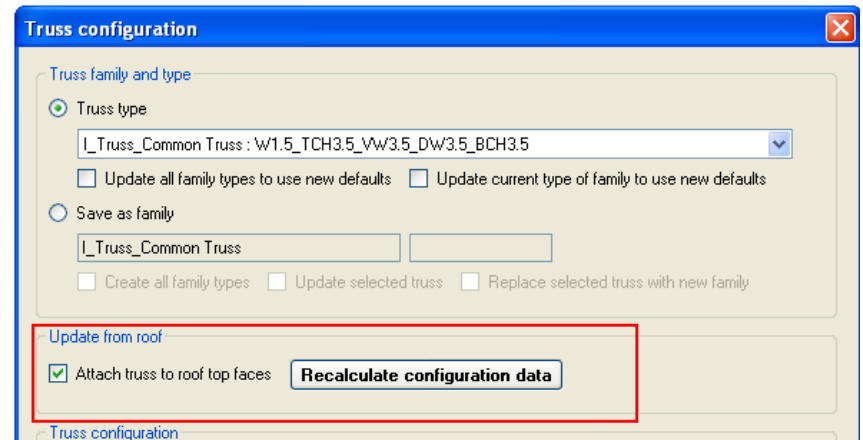
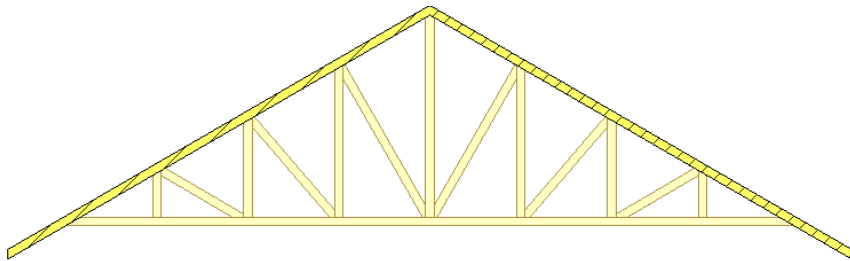
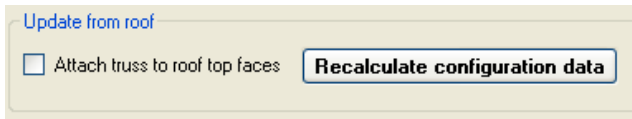
Current type of family

All family types



Insert Truss by Selected Model Line

- *Recalculate configuration data* function enables you to recalculate truss configuration relative to the roof geometry. Truss can be attached to the roof top faces or not.

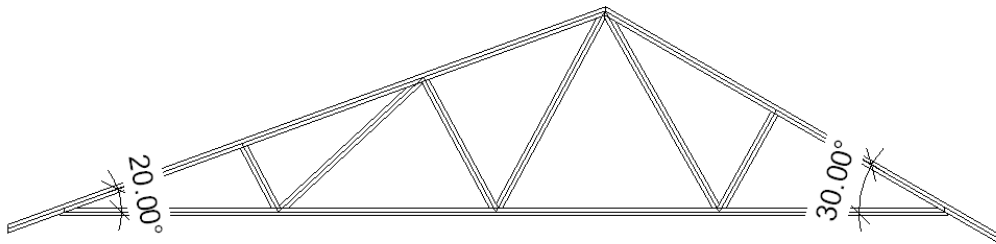


Insert Truss by Selected Model Line

Define parameters for both sides:

- *Pitch*. If you use the *Recalculate configuration data* function, the truss will get right pitch from the roof;
- *Web profile*.

“Truss+” will calculate Side lengths considering the defined slope angle automatically.



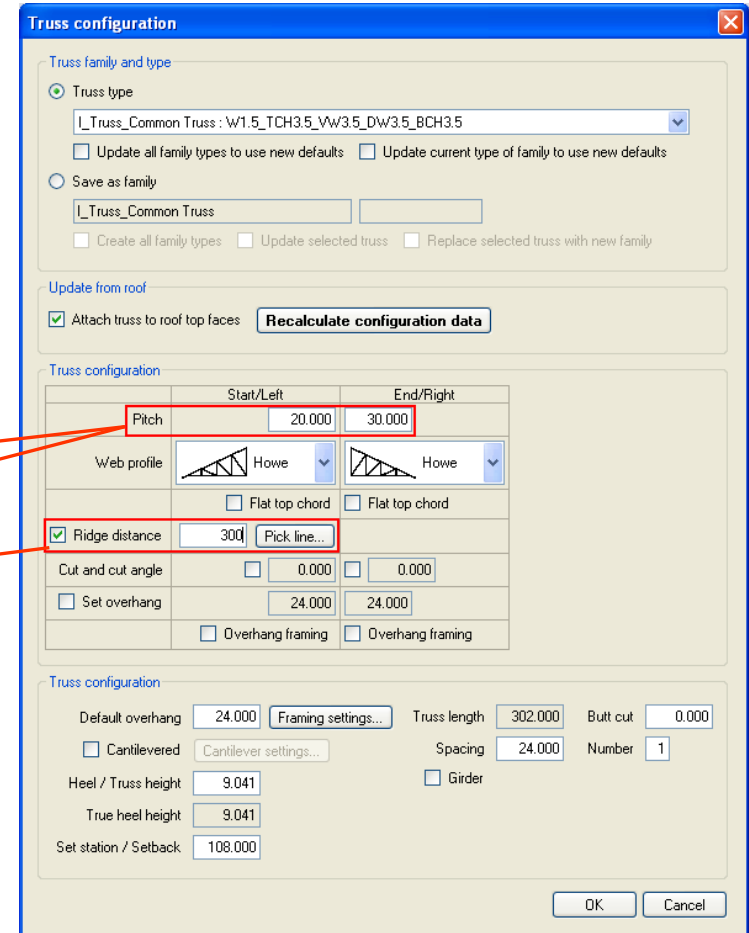
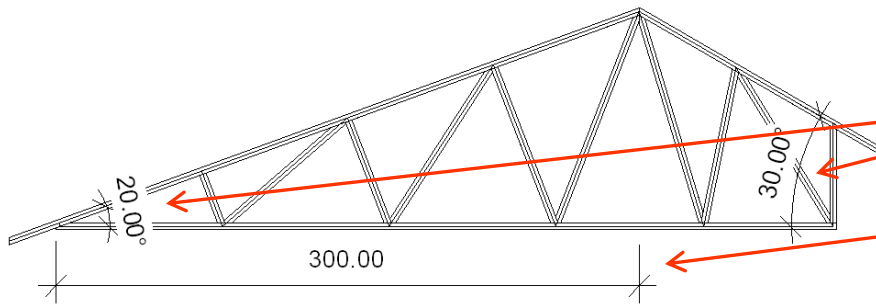
The screenshot shows the 'Truss configuration' dialog box. The 'Truss type' is set to 'I_Truss_Common Truss : W1.5_TCH3.5_VW3.5_DW3.5_BCH3.5'. The 'Update from roof' section has 'Attach truss to roof top faces' checked and a 'Recalculate configuration data' button. The 'Truss configuration' table shows 'Pitch' with 'Start/Left' and 'End/Right' values of 30.000. The 'Web profile' dropdown menu is open, showing options: Howe (selected), Fink, Queen, Pratt, Fan, and Mod Fan. Other settings include 'Default overhang' (24.000), 'Truss length' (302.000), 'Butt cut' (0.000), 'Spacing' (24.000), 'Number' (1), 'Heel / Truss height' (9.041), 'True heel height' (9.041), and 'Set station / Setback' (108.000). The 'OK' and 'Cancel' buttons are at the bottom right.

	Start/Left	End/Right
Pitch	30.000	30.000

Insert Truss by Selected Model Line

- *Ridge distance.* You can *Pick line* (Model line), showing the distance or switch On the check box and add this values manually.

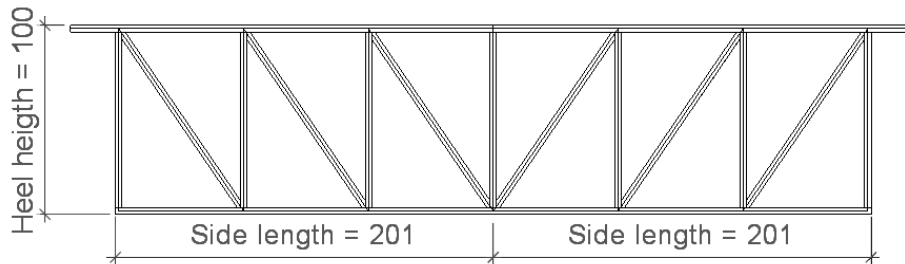
User can define Ridge distance and Start and End Pitch. In this case “Truss+” will set Heel if it’s needed.



Insert Truss by Selected Model Line

In order to have Truss with Flat top chord, the user has to set :

- *Truss height* ;
- *Start and End Pitch* to zero;
- Switch On *Flat top chord* check boxes.



Truss configuration

Truss family and type

Truss type

L_Truss_Common Truss : W1.5_TCH3.5_VW3.5_DW3.5_BCH3.5

Update all family types to use new defaults Update current type of family to use new defaults

Save as family

L_Truss_Common Truss

Create all family types Update selected truss Replace selected truss with new family

Update from roof

Attach truss to roof top faces **Recalculate configuration data**

Truss configuration

	Start/Left	End/Right
Pitch	0.000	0.000
Web profile	Howe	Howe
	<input checked="" type="checkbox"/> Flat top chord	<input checked="" type="checkbox"/> Flat top chord
Ridge distance	300.000	Pick line...
Cut and cut angle	<input type="checkbox"/> 0.000	<input type="checkbox"/> 0.000
Set overhang	24.000	24.000
	<input type="checkbox"/> Overhang framing	<input type="checkbox"/> Overhang framing

Truss configuration

Default overhang 24.000 **Framing settings...** Truss length 302.000 Butt cut 0.000

Cantilevered **Cantilever settings...** Spacing 24.000 Number 1

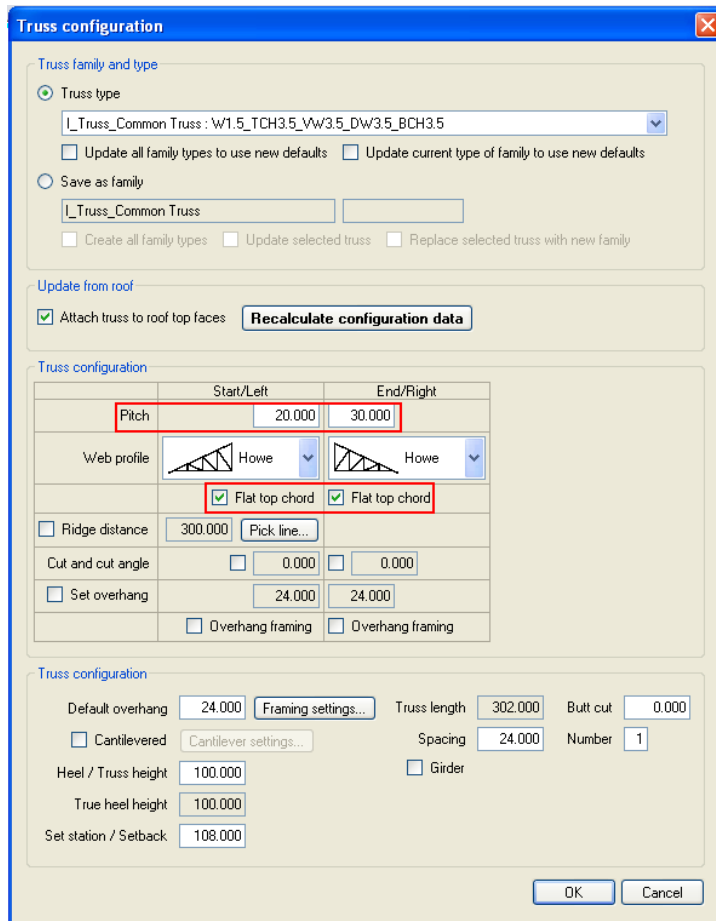
Heel / Truss height 100.000 Girder

True heel height 100.000

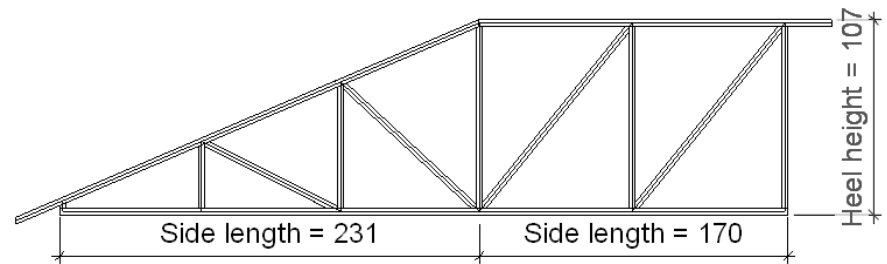
Set station / Setback 108.000

OK Cancel

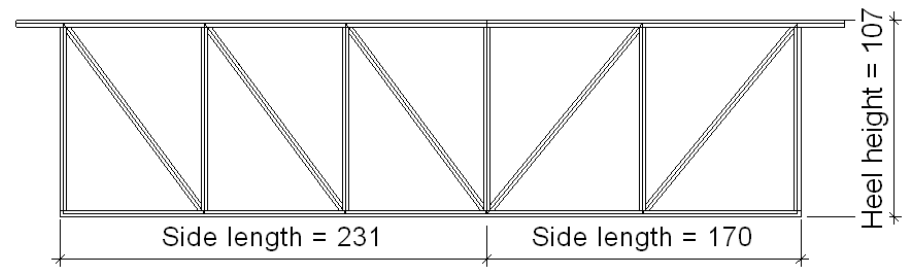
Insert Truss by Selected Model Line



Very often the height and Side lengths of the truss are determinate of the roof hip end.



If Pitch should be set but a top chord is flat, “Truss+” will calculate Side lengths and Heel heights automatically.

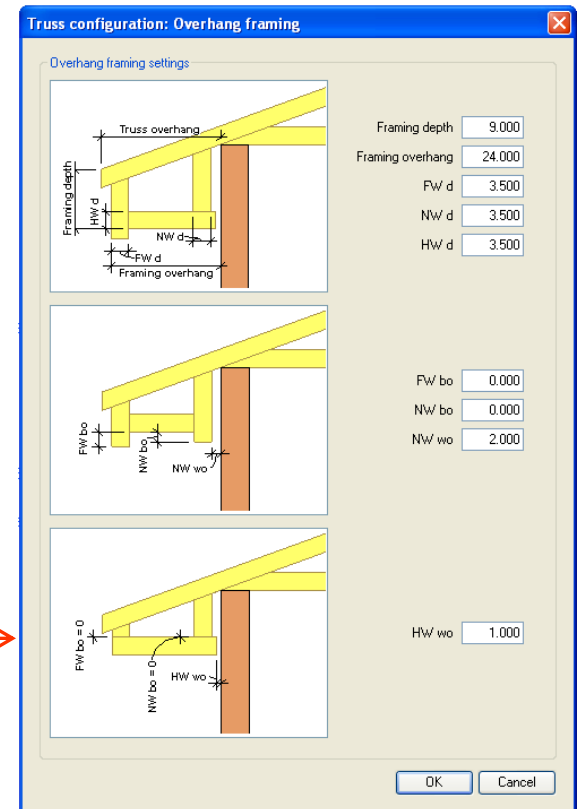
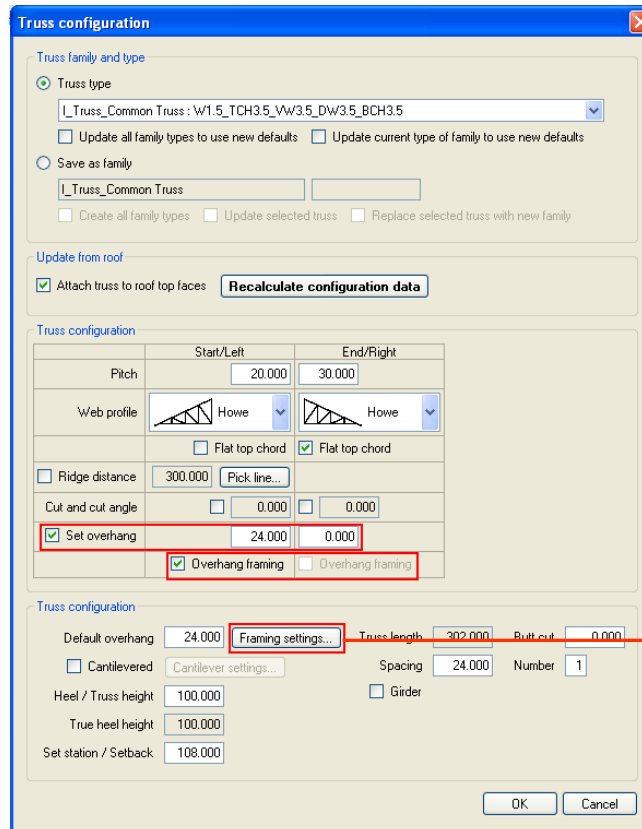
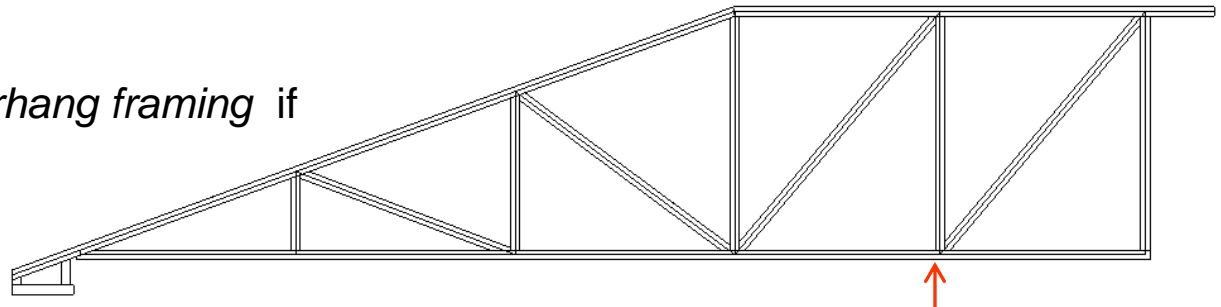


Insert Truss by Selected Model Line

- Switch On the option *Overhang framing* if it's needed.

- Define *Overhang framing settings*.

User can define different values of overhang lengths on Start and End points of the truss.



Insert Truss by Selected Model Line

Truss configuration

Truss family and type

Truss type

I_Truss_Common Truss : W1.5_TCH3.5_VW3.5_DW3.5_BCH3.5

Update all family types to use new defaults Update current type of family to use new defaults

Save as family

I_Truss_Common Truss

Create all family types Update selected truss Replace selected truss with new family

Update from roof

Attach truss to roof top faces **Recalculate configuration data**

Truss configuration

	Start/Left	End/Right
Pitch	20.000	30.000
Web profile	Howe	Howe
	<input type="checkbox"/> Flat top chord	<input checked="" type="checkbox"/> Flat top chord
Ridge distance	300.000	Pick line...
Cut and cut angle	<input type="checkbox"/> 0.000	<input checked="" type="checkbox"/> 45.000
Set overhang	<input checked="" type="checkbox"/> 0.000	0.000
	<input type="checkbox"/> Overhang framing	<input type="checkbox"/> Overhang framing

Truss configuration

Default overhang 24.000 **Framing settings...** Truss length 302.000 **Butt cut 1.000**

Cantilevered **Cantilever settings...** Spacing 24.000 Number 1

Heel / Truss height 0.000 Girder

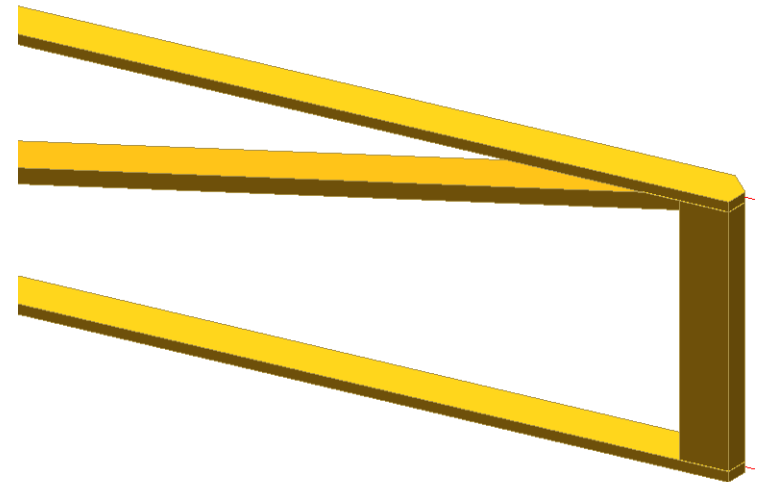
True heel height 4.725

Set station / Setback 108.000

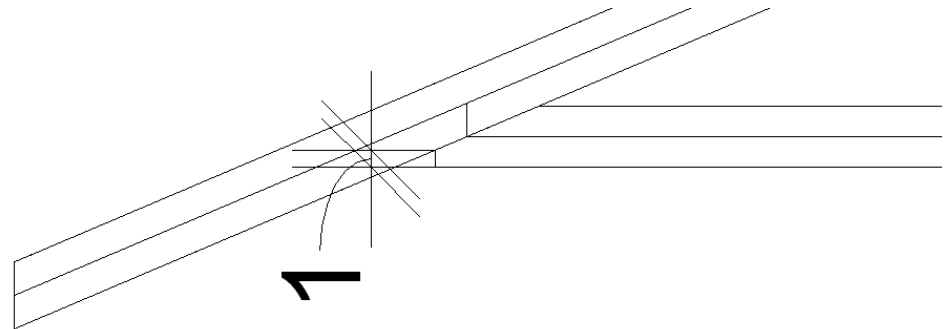
OK **Cancel**

If it's needed:

- Define *Cut and cut angle*

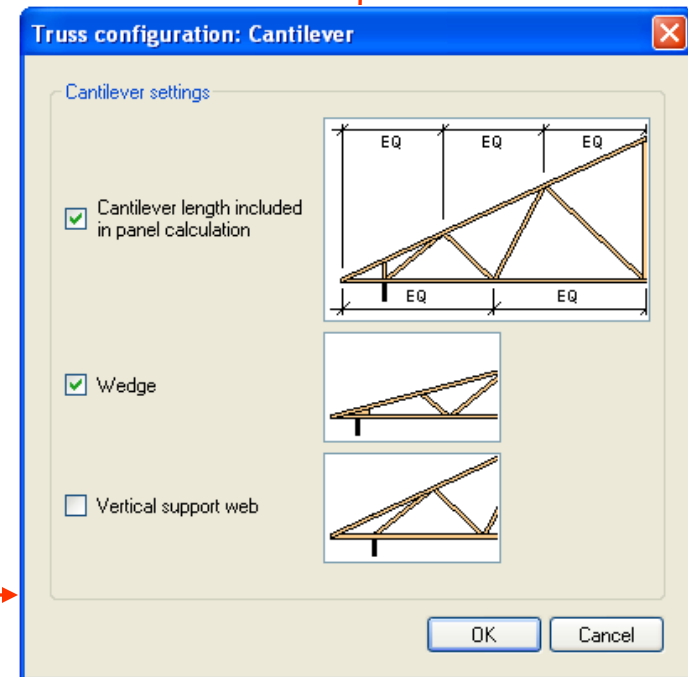
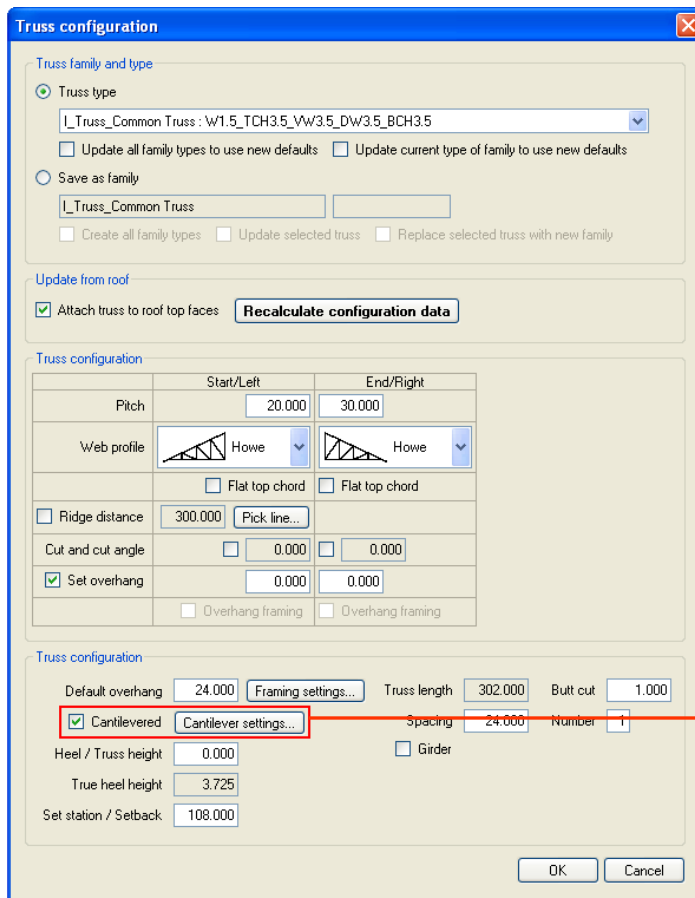
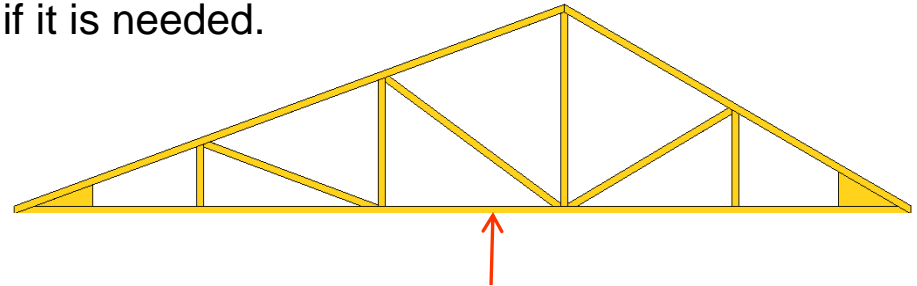


- Define the *Butt cut* value



Insert Truss by Selected Model Line

- Switch On the *Cantilevered* check box if it is needed.
- Define *Cantilever settings*.



Insert Truss by Selected Model Line

- User can switch On the *Girder* check box. This option is useful for sorting and scheduling.
- *Spacing*, *Set station/Setback* and *Number* options will be described in next chapters.

Truss configuration

Truss family and type

Truss type

L_Truss_Common Truss : W1.5_TCH3.5_Vw3.5_DW3.5_BCH3.5

Update all family types to use new defaults Update current type of family to use new defaults

Save as family

L_Truss_Common Truss

Create all family types Update selected truss Replace selected truss with new family

Update from roof

Attach truss to roof top faces **Recalculate configuration data**

Truss configuration

	Start/Left	End/Right
Pitch	20.000	30.000
Web profile	Howe	Howe
	<input type="checkbox"/> Flat top chord	<input type="checkbox"/> Flat top chord
<input type="checkbox"/> Ridge distance	300.000 Pick line...	
Cut and cut angle	<input type="checkbox"/> 0.000	<input type="checkbox"/> 0.000
<input checked="" type="checkbox"/> Set overhang	0.000	0.000
	<input type="checkbox"/> Overhang framing	<input type="checkbox"/> Overhang framing

Truss configuration

Default overhang 24.000 **Framing settings...** Truss length 302.000 Butt cut 1.000

Cantilevered **Cantilever settings...** Spacing 24.000 Number 1

Heel / Truss height 0.000 **Girder**

True heel height 3.725

Set station / Setback 108.000

OK Cancel

Increase your productivity !



AGA CAD Ltd.
Zalgirio 112A, LT-09300 Vilnius,
Lithuania
Tel. +370 5 2398111
Fax +370 5 2398113
Email info@aga-cad.lt
info@tools4revit.com
www.tools4revit.com