

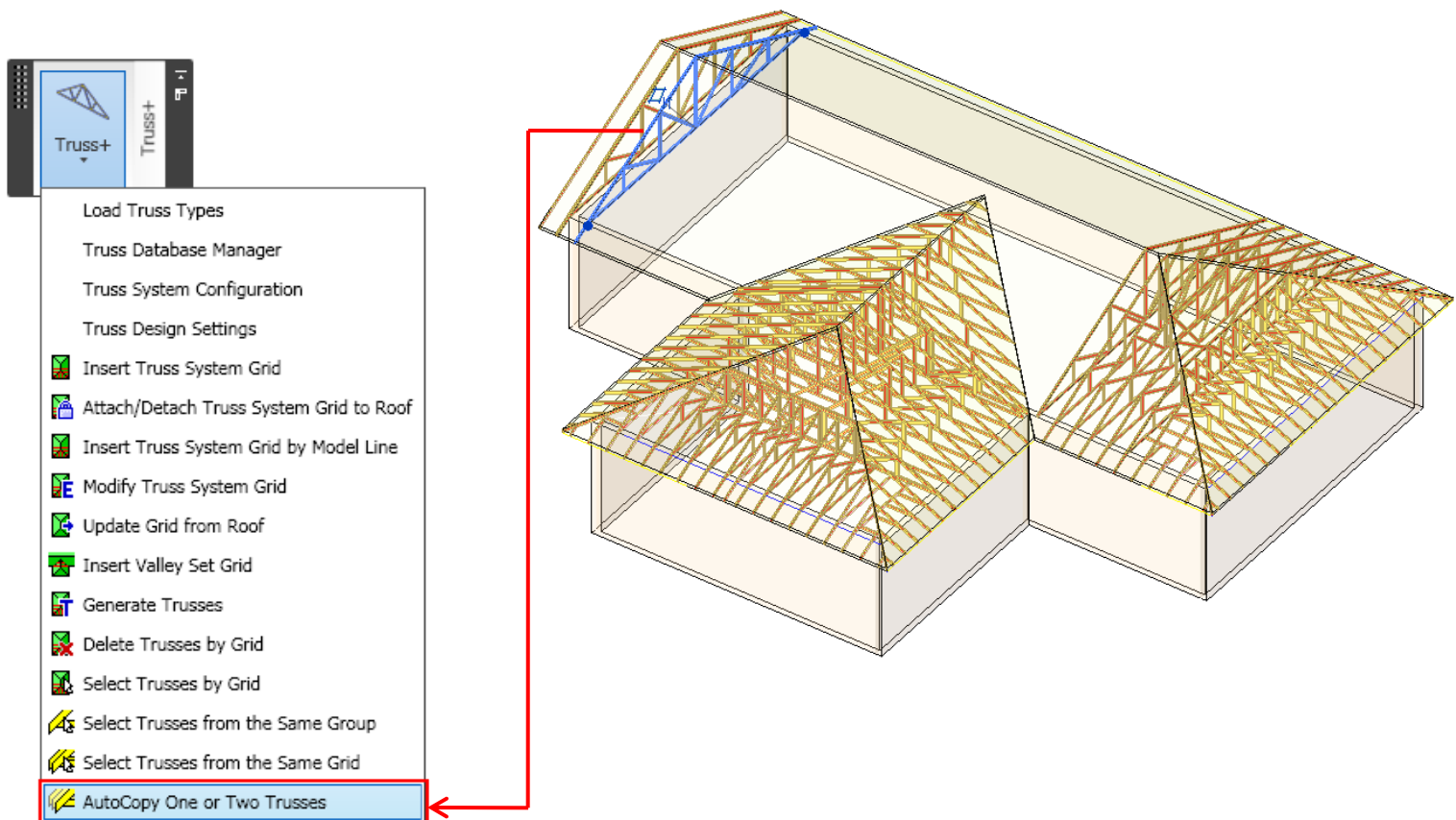
Truss+ 2010

AutoCopy One or Two Trusses

AutoCopy One or Two Trusses

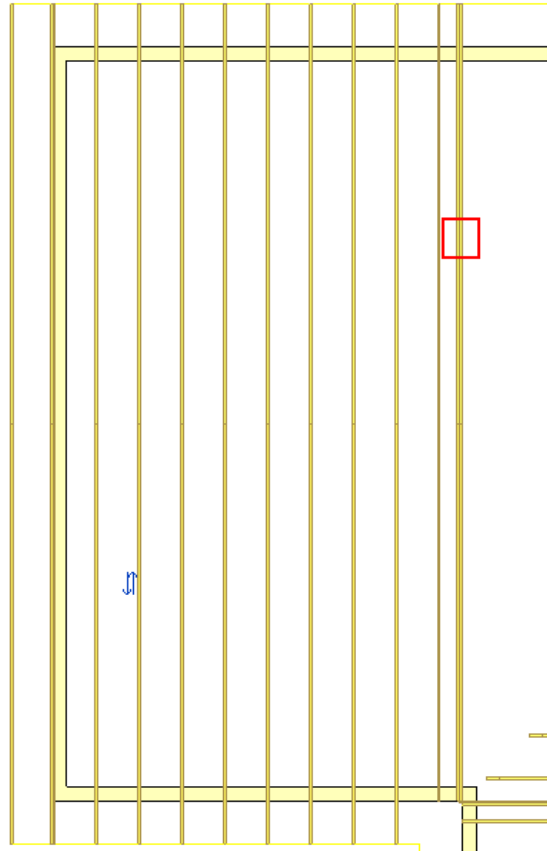
One truss can be auto copied only when Roof and Truss System Grid existing. The *AutoCopy One Truss* function works for common trusses only.

- Select **one** truss you want to copy.
- Choose *AutoCopy One or Two Trusses* from “Truss+” menu.



AutoCopy One or Two Trusses

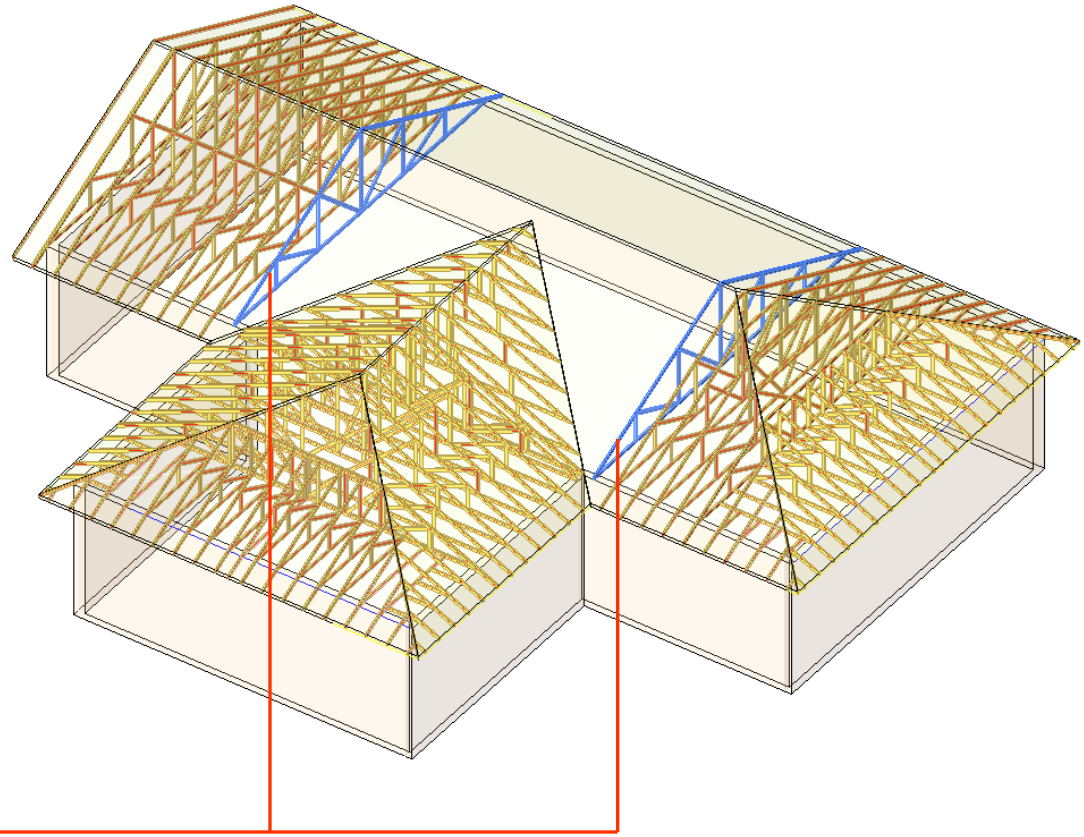
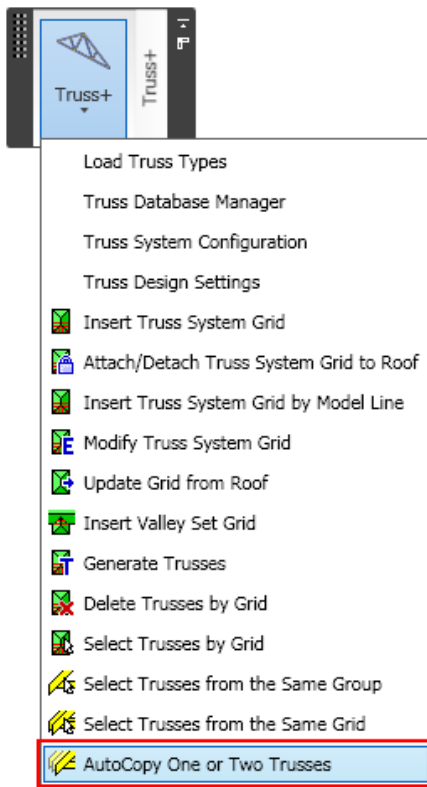
- Truss is copied as it is defined in the truss system grid configuration.



First girder ply	<input type="text" value="1"/>
<input checked="" type="checkbox"/> Second girder ply	<input type="text" value="2"/>

AutoCopy One or Two Trusses

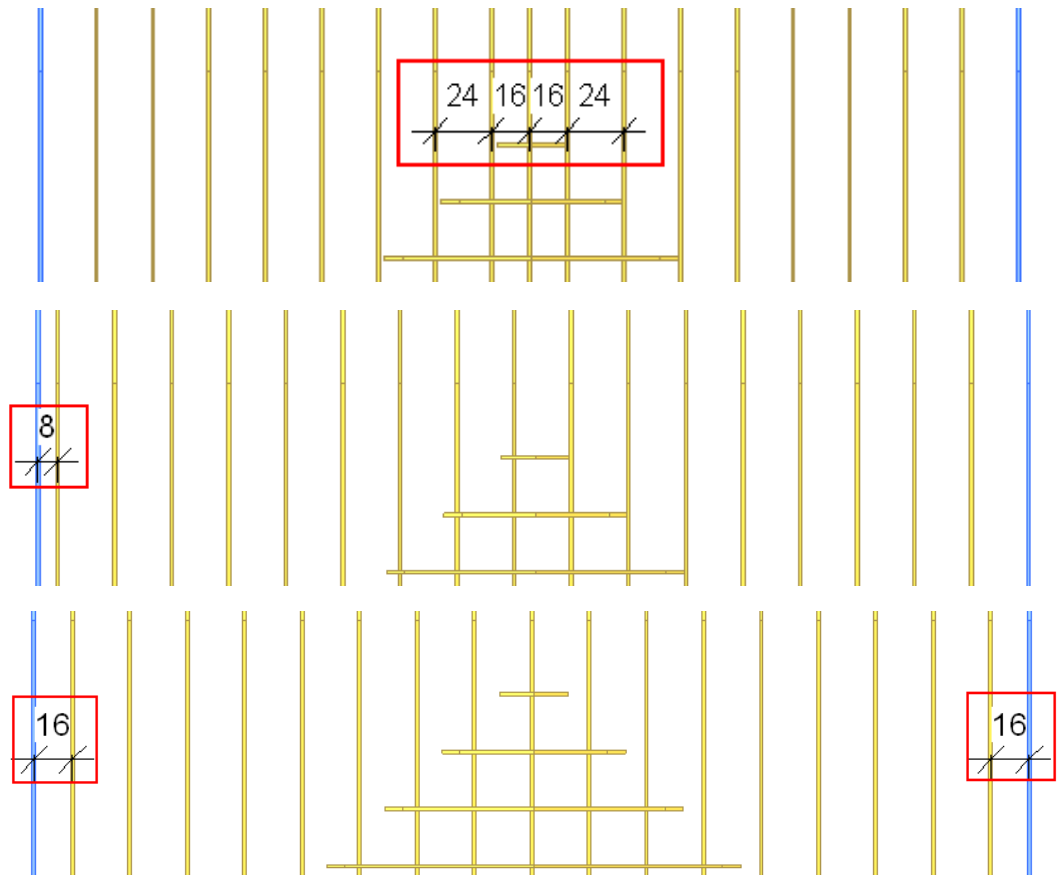
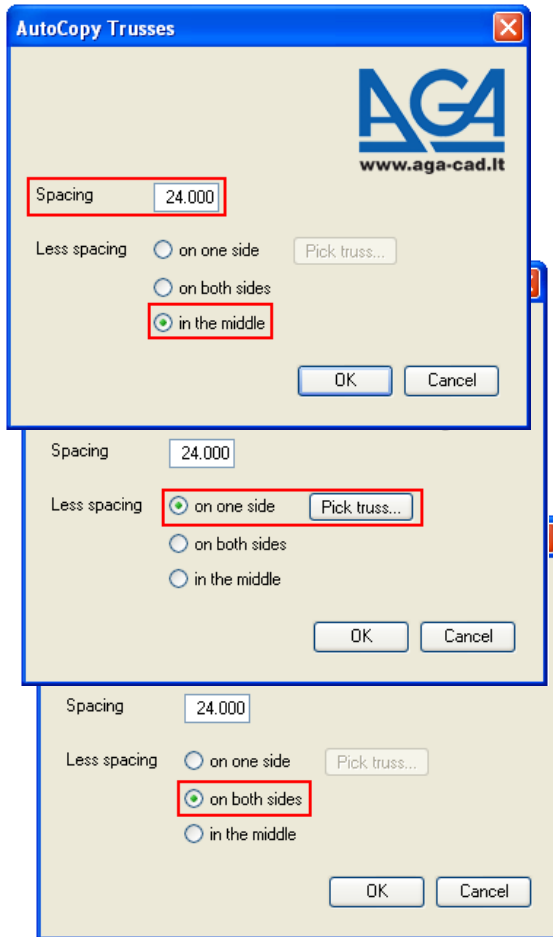
- Select **two** trusses and choose *AutoCopy One or Two Trusses* from “Truss+” menu.



AutoCopy One or Two Trusses

In the coming dialog the user has to define AutoCopy parameters:

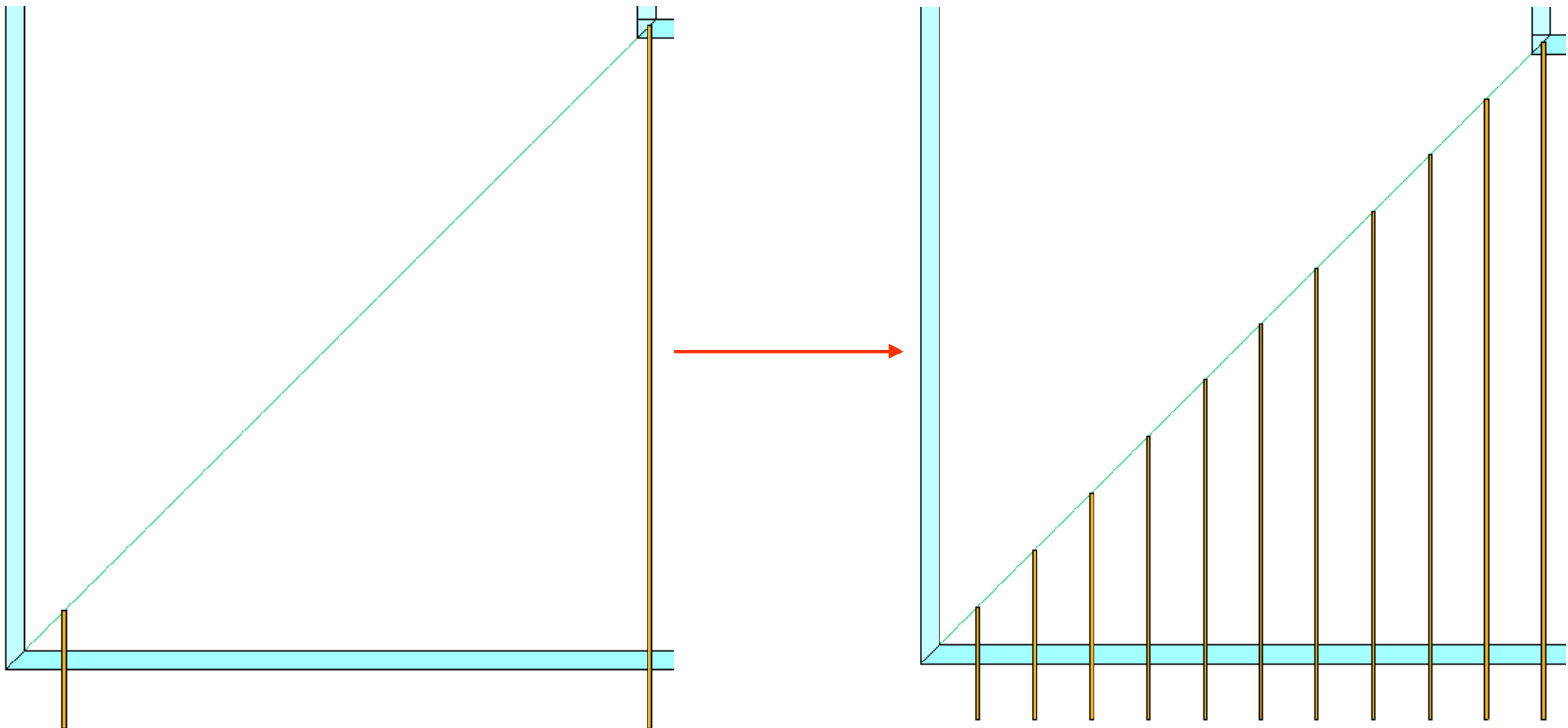
- *Spacing*;
- *Less spacing* - in the middle, in one or both sides.



AutoCopy One or Two Trusses

AutoCopy Two Trusses function can be used also when Roof and Truss system grid does not exist.

- Select **two** trusses and choose *AutoCopy One or Two Trusses* from “Truss+” menu.
- Define AutoCopy parameters.



Increase your productivity !



AGA CAD Ltd.
Zalgirio 112A, LT-09300 Vilnius,
Lithuania
Tel. +370 5 2398111
Fax +370 5 2398113
Email info@aga-cad.lt
info@tools4revit.com
www.tools4revit.com