



Truss+ 2010

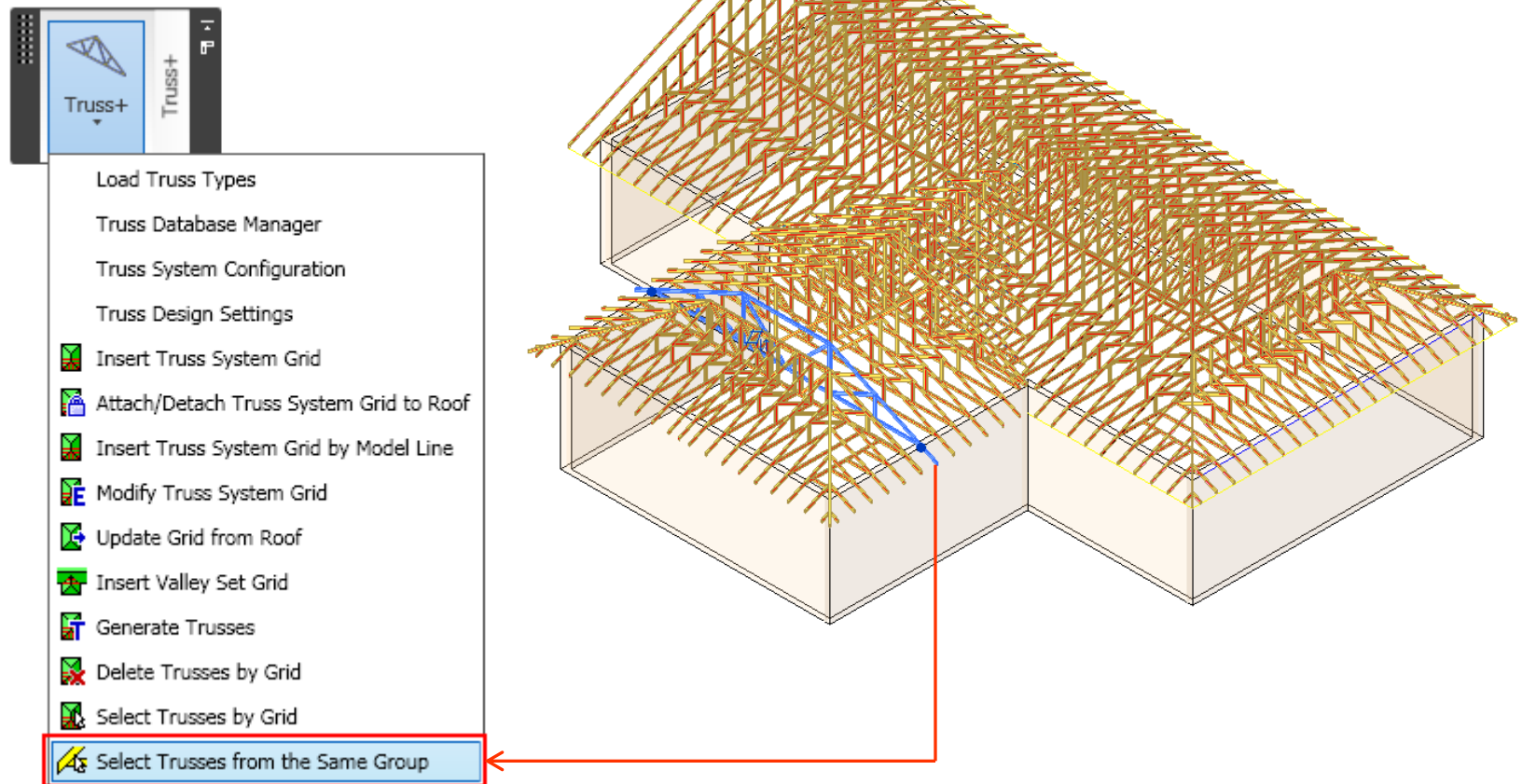
Select Trusses from the Same Group



Select Trusses from the Same Group

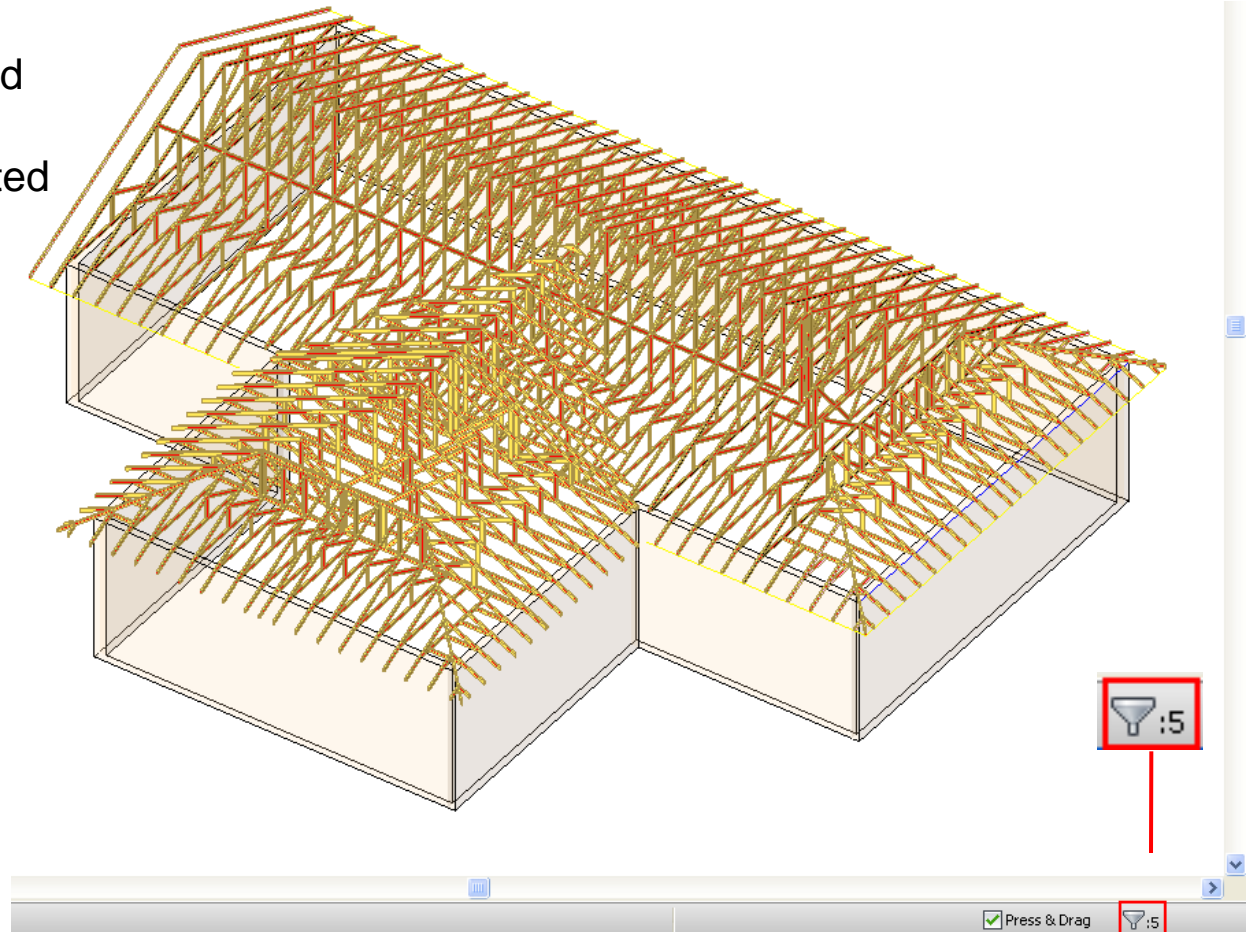
Trusses from the same group belong to the same grid and the same type.

- Select Truss.
- Choose *Select Trusses from the Same Group* from “Truss+” menu.



Select Trusses from the Same Group

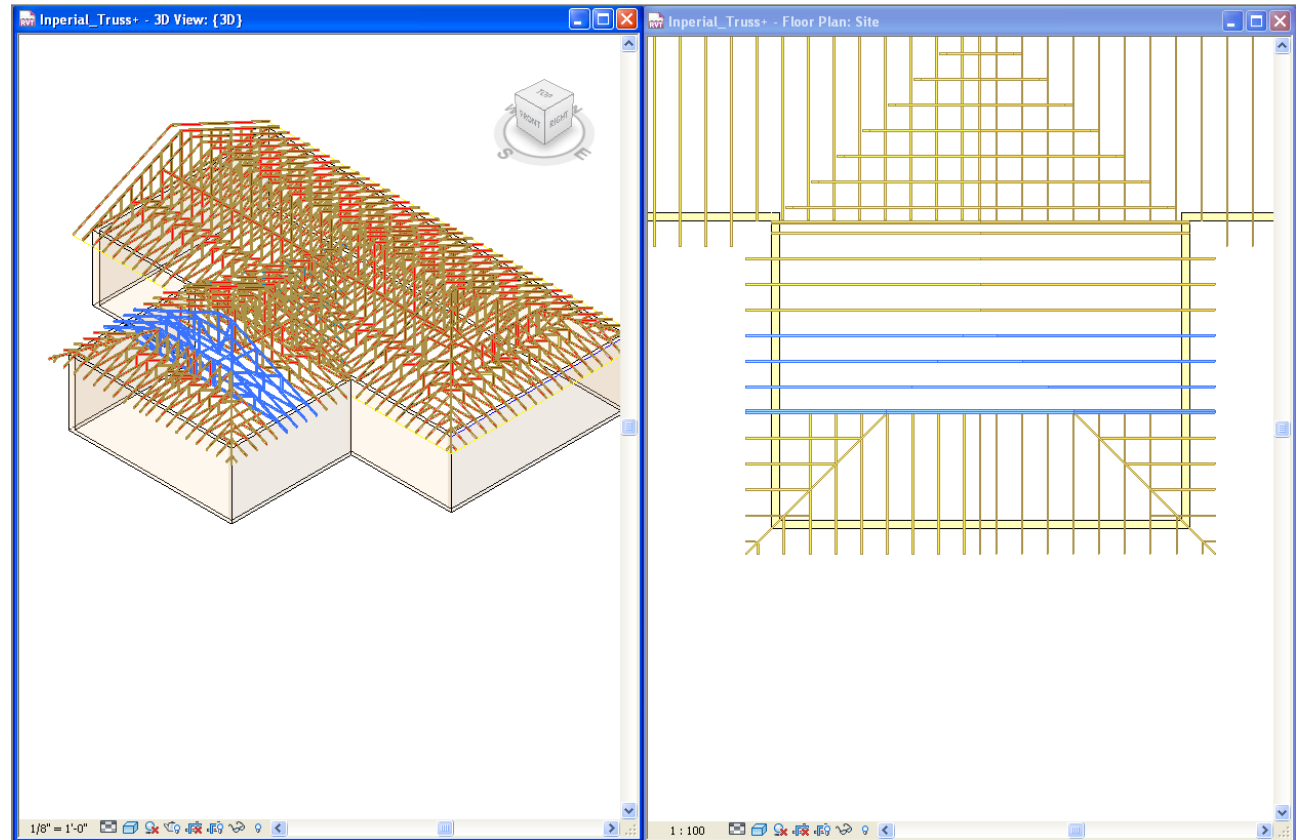
- The selected trusses from the same group are not visible because of Revit bug.
- The sign showing selected trusses is the filter, which shows the number of selected elements.
(The filter is shown down below in the right corner.)



Select Trusses from the Same Group

There is another possibility to see the selected trusses.

- Click *Tile Windows* (another view should be open) and make one of the view active or just open another view.



Note: If the selected truss is not from the grid but it's inserted manually, trusses are multiplied using *Copy*, *Array*, *AutoArray* functions will be selected only.

Increase your productivity !



AGA CAD Ltd.
Zalgirio 112A, LT-09300 Vilnius,
Lithuania
Tel. +370 5 2398111
Fax +370 5 2398113
Email info@aga-cad.lt
info@tools4revit.com
www.tools4revit.com