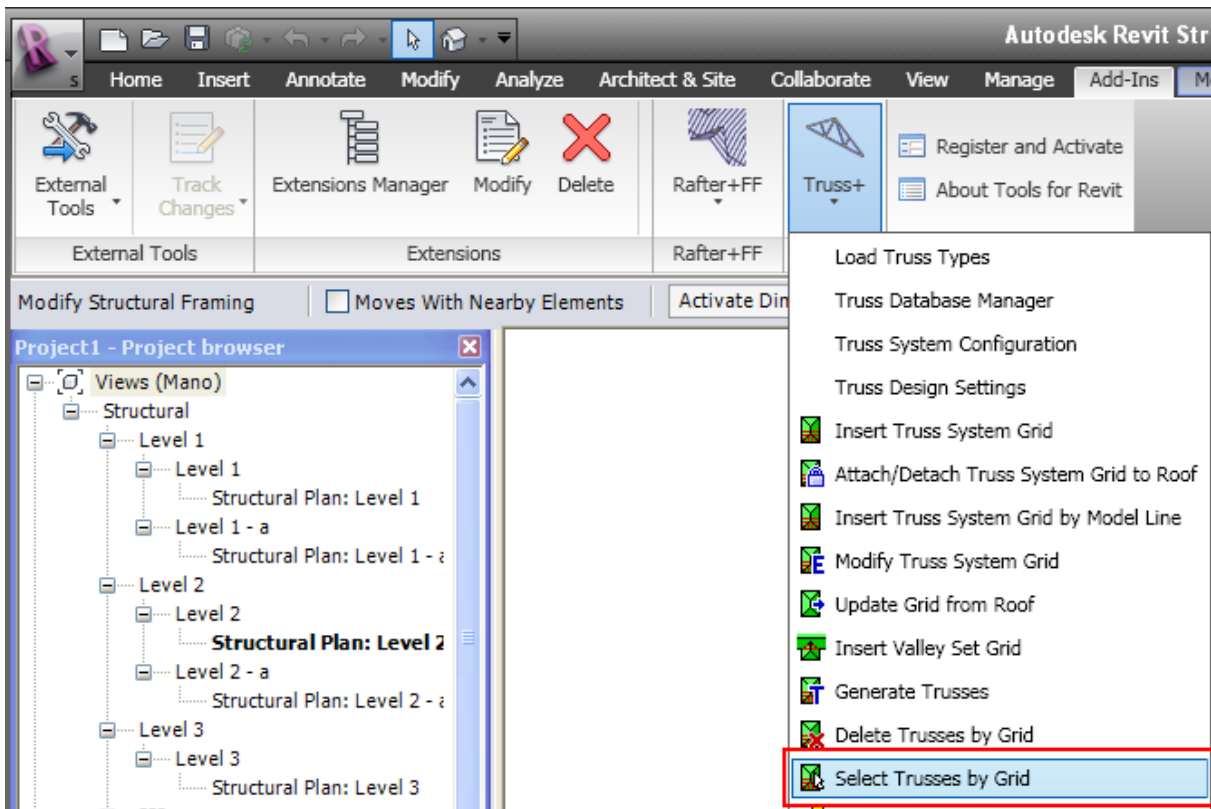
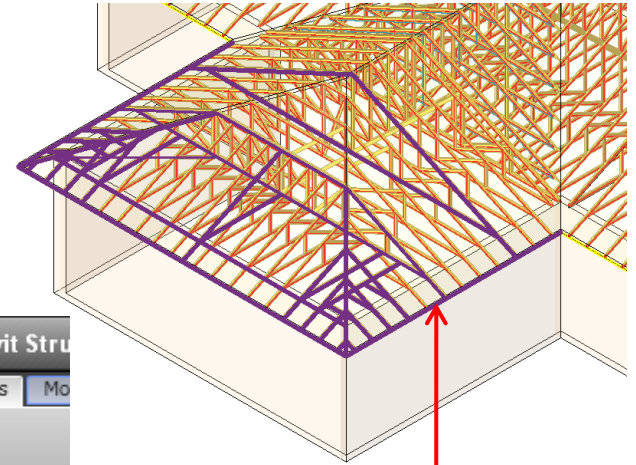




Truss+ 2010
Select Trusses by Grid

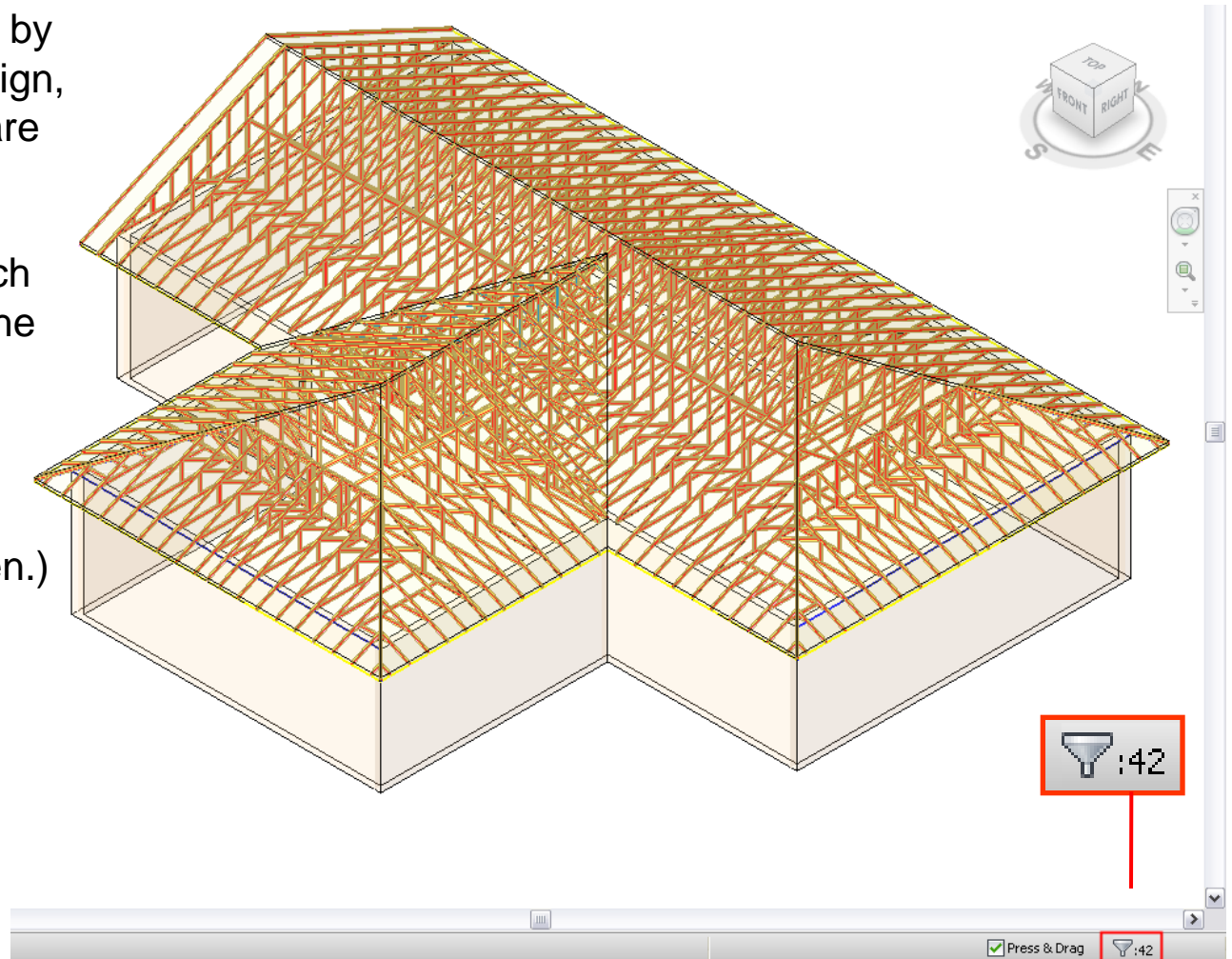
Select Trusses by Grid

- Select grids (it's possible to select several grids at a time).
- Choose *Select Trusses by Grid* from “Truss+” menu.



Select Trusses by Grid

- After selecting trusses by grid, there is no visible sign, showing which trusses are selected.
- The sign showing which trusses are selected is the filter, that shows the number of selected elements.
(The filter is in the right lower corner of the screen.)

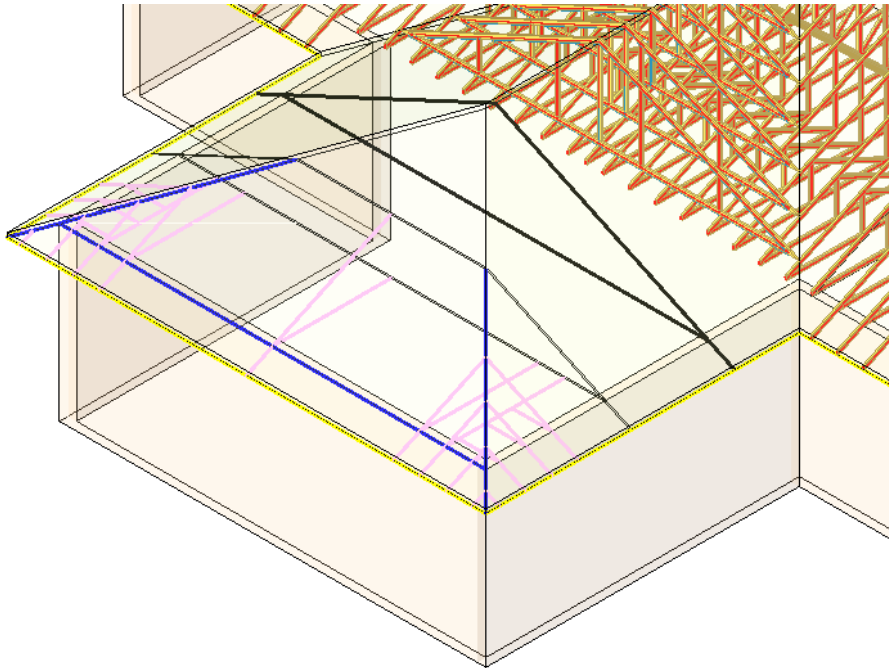


Select Trusses by Grid

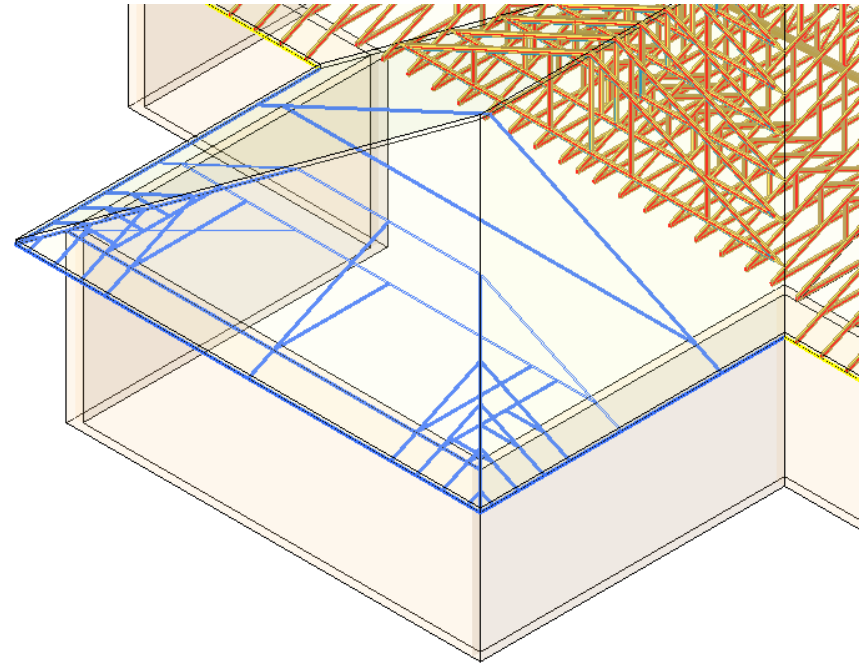
- If an error message 'Select Grid' occurs, it means that user hasn't selected grids before trying to delete trusses.



Not selected grid



Selected grid



Increase your productivity !



AGA CAD Ltd.
Zalgirio 112A, LT-09300 Vilnius,
Lithuania
Tel. +370 5 2398111
Fax +370 5 2398113
Email info@aga-cad.lt
info@tools4revit.com
www.tools4revit.com