

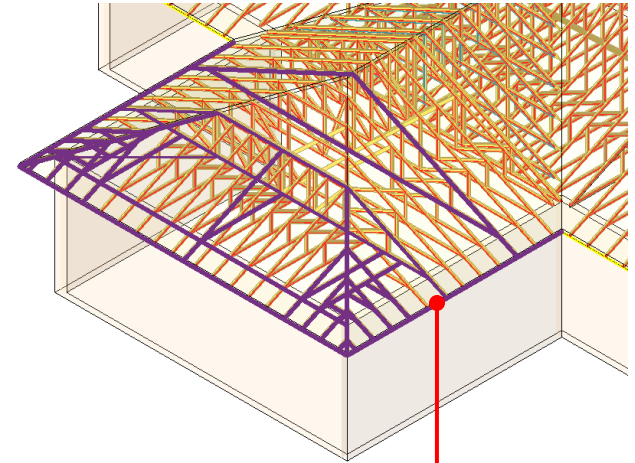
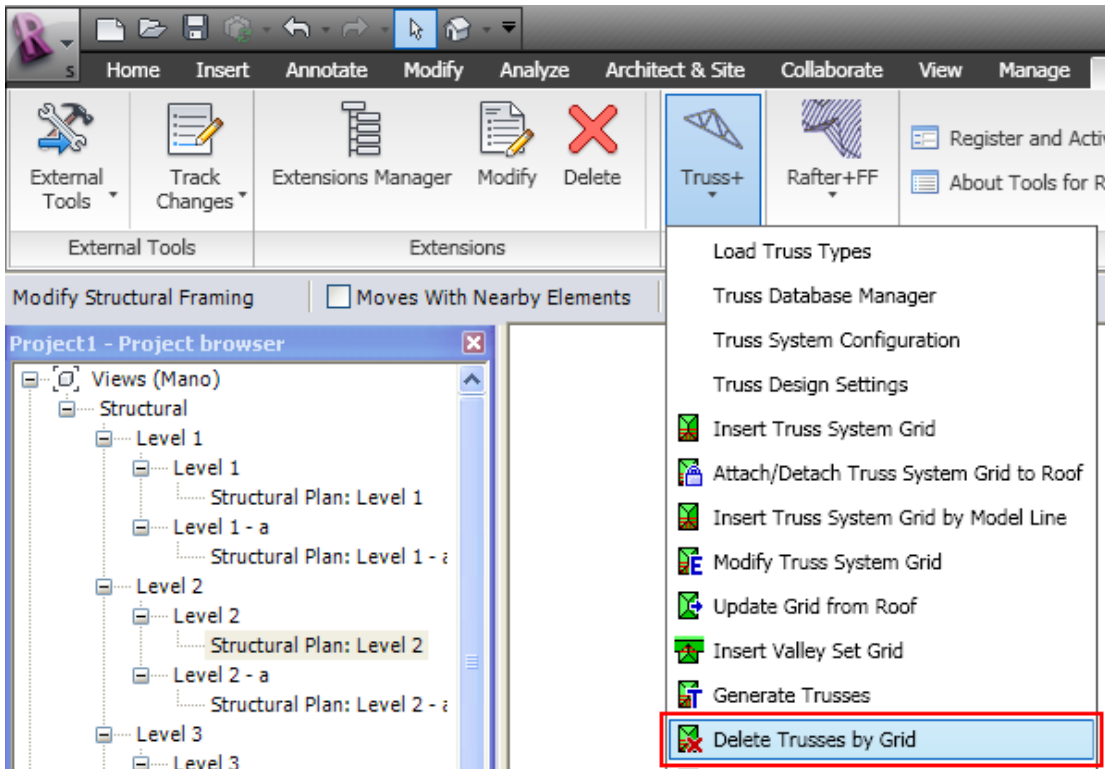


Truss+ 2010

Delete Trusses by Grid

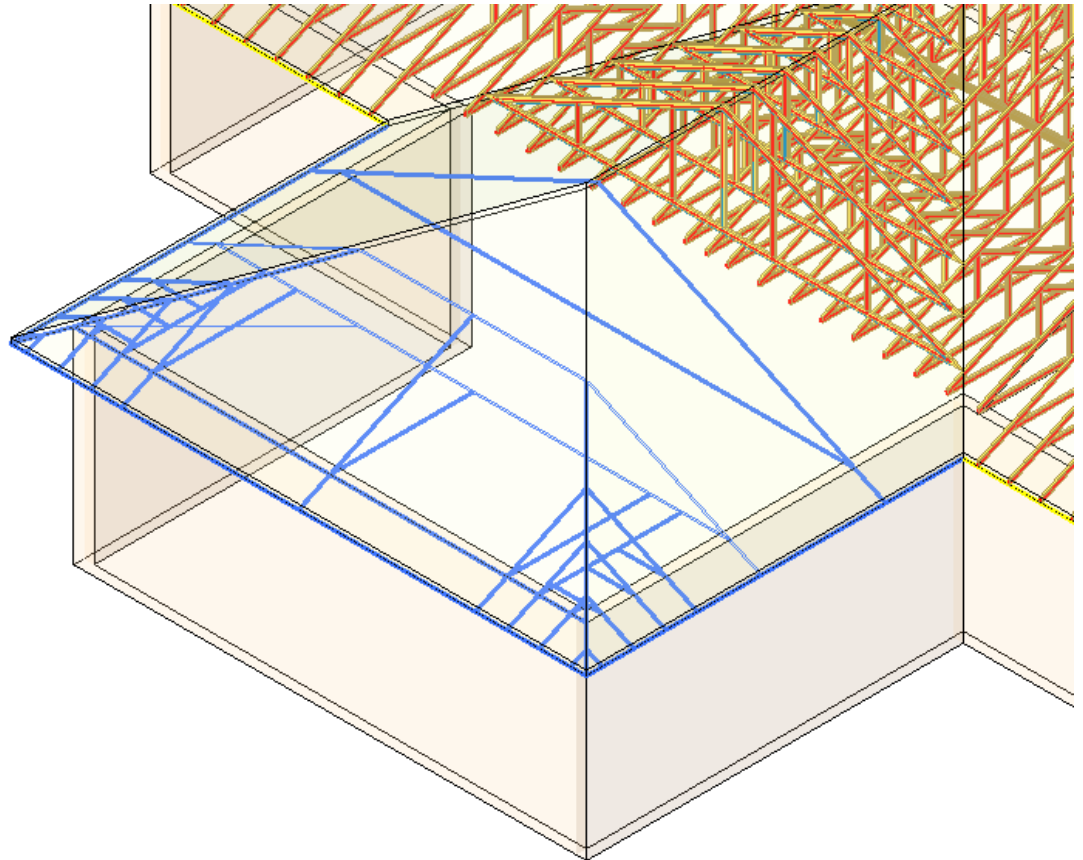
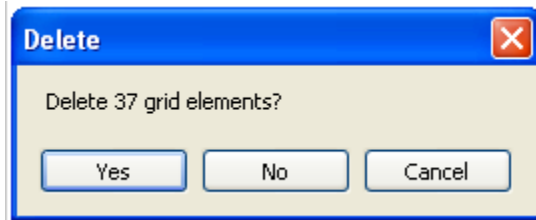
Delete Trusses by Grid

- Select grids (it's possible to select several grids at a time).
- Choose *Delete Trusses by Grid* from “Truss+” menu.



Delete Trusses by Grid

- A dialogue window will be open.
- To delete trusses select Yes.

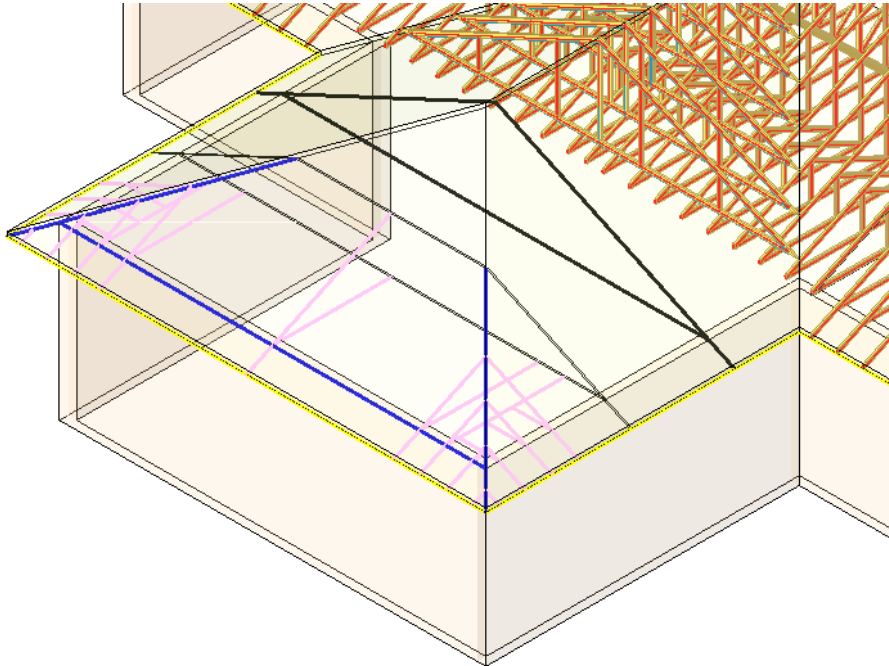


Delete Trusses by Grid

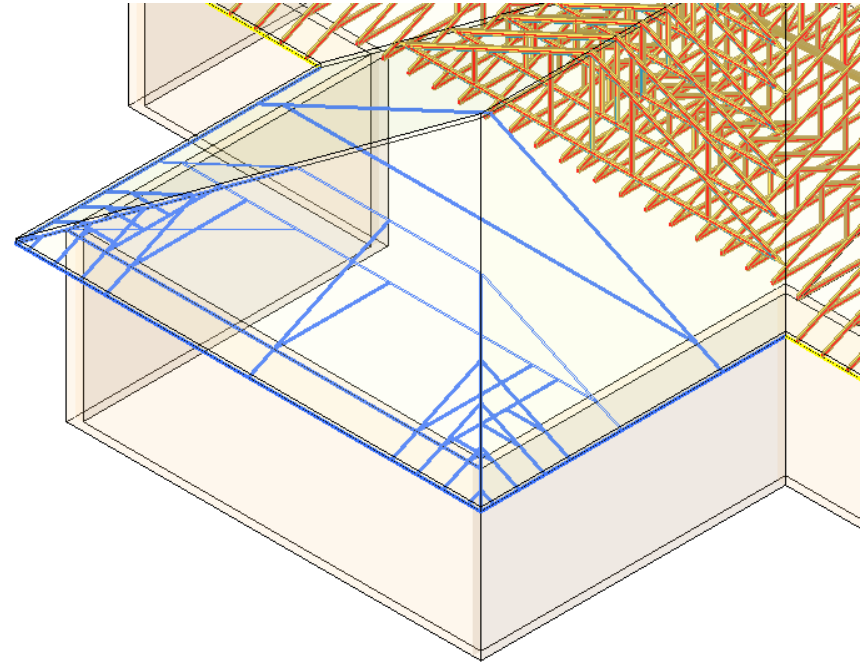
- If an error message 'Select grid(s)' occurs, it means that the user hasn't selected grids before trying to delete trusses.



Not selected grid



Selected grid



Increase your productivity !



AGA CAD Ltd.
Zalgirio 112A, LT-09300 Vilnius,
Lithuania
Tel. +370 5 2398111
Fax +370 5 2398113
Email info@aga-cad.lt
info@tools4revit.com
www.tools4revit.com