



Truss+ 2010

Load Truss Types



Loading Truss Types

- Choose *Load Truss Types* directly from “Truss+” menu.

The screenshot shows the Revit software interface with the Truss+ menu open. The 'Load Truss Types' option is highlighted with a red box, and a red arrow points to the 'Load families' dialog box. The dialog box has the following content:

Load families

Load Truss System Grids

Load Truss System Grid families

Full version
(time-consuming version)
(removed since 2010.3)

Simplified version
(faster version)

Only one version of Truss System Grids can be loaded in project.

Load Trusses

Load Truss families

Visibility of elements

	Detail Level		
	Coarse	Medium	Fine
Visibility of Truss System Grids		X	
Visibility of Truss Axial Lines	X	X	
Visibility of Truss Webs		X	X

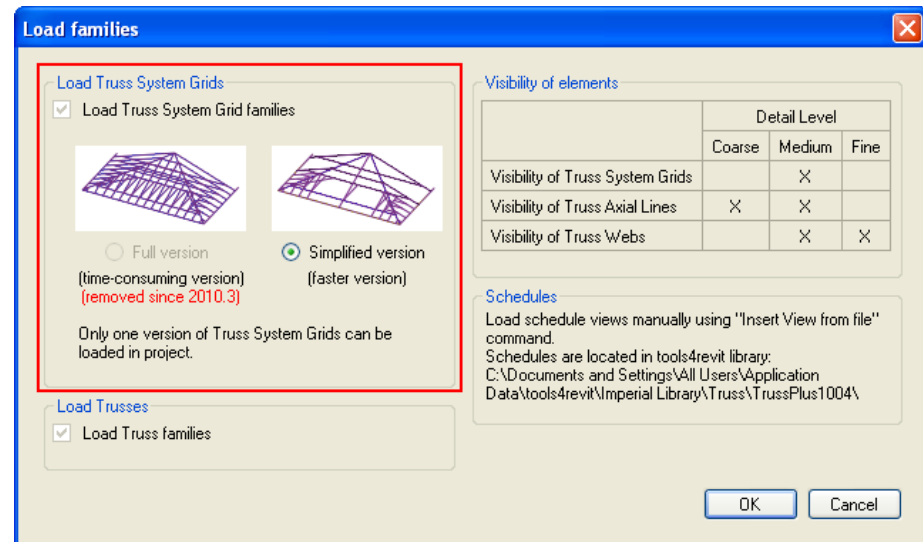
Schedules

Load schedule views manually using "Insert View from file" command.
Schedules are located in tools4revit library:
C:\Documents and Settings\All Users\Application Data\tools4revit\Imperial Library\Truss\TrussPlus1004\

OK Cancel

Load Families – Load Truss System Grids

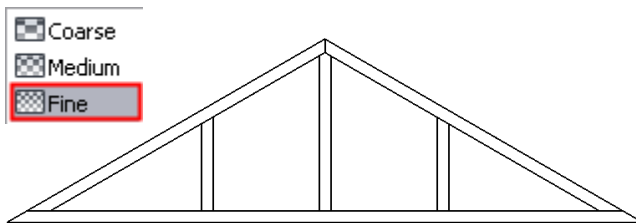
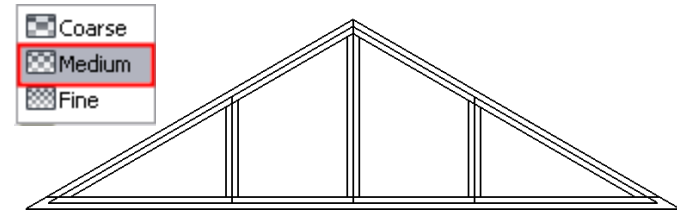
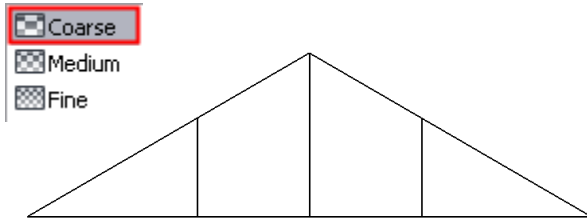
- The command *Load Truss Types* loads truss system grids and truss families to the project.
- To avoid this time-consuming operation, the user can save file as a template after loading families.
- Two versions of system grid families:
 - Full version (work with this version takes more time because it contains all elements of truss system grid);
 - Simplified version (work with this version takes less time because it contains only **prime** elements of truss system grid).
- The final result is the same, obtained working with the full or simplified version.



Note: Full version is removed since 2010.3.

Load Families – Visibility of Elements


- Visibility settings depend on Detail level.



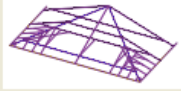
Load families

Load Truss System Grids

Load Truss System Grid families



Full version
(time-consuming version)
(removed since 2010.3)



Simplified version
(faster version)

Only one version of Truss System Grids can be loaded in project.

Load Trusses

Load Truss families

Visibility of elements

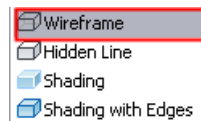
	Detail Level		
	Coarse	Medium	Fine
Visibility of Truss System Grids		X	
Visibility of Truss Axial Lines	X	X	
Visibility of Truss Webs		X	X

Schedules

Load schedule views manually using "Insert View from file" command.
Schedules are located in tools4revit library:
C:\Documents and Settings\All Users\Application Data\tools4revit\Imperial Library\Truss\TrussPlus1004\

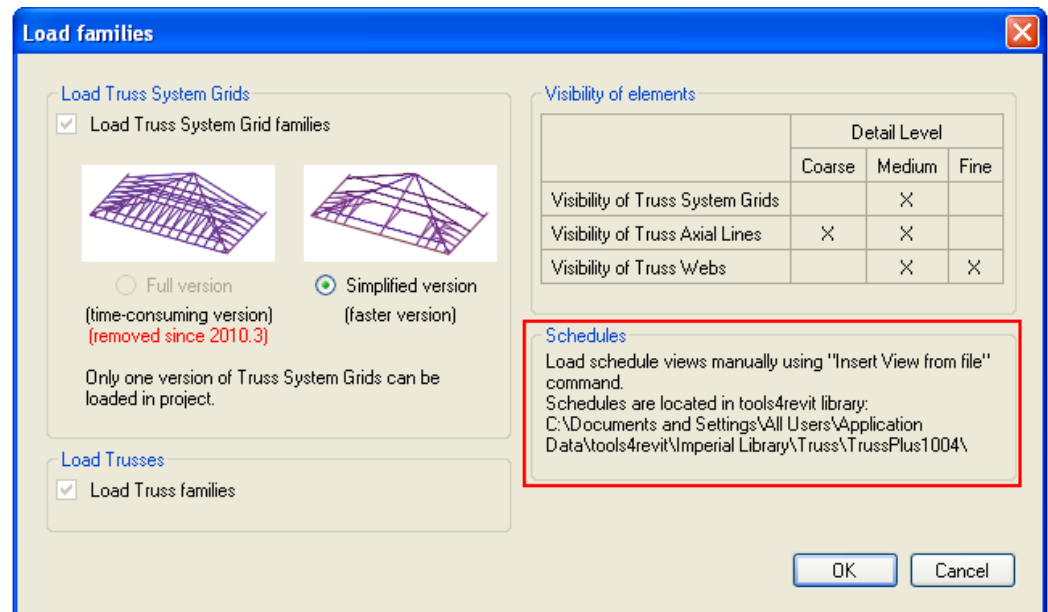
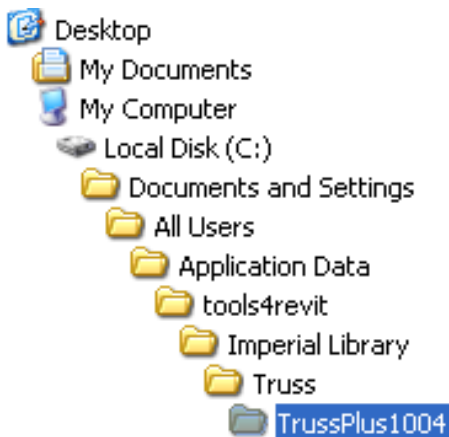
OK Cancel

Note: Axial lines are visible in “Wireframe” mode.



Load Families – Schedules

- All schedules are located in tools4revit\Metric or Imperial Library\Truss\TrussPlus1003\
- Use the command *Insert from File* to load schedules manually.
- Types of schedules:
 - Beams - compact schedule
 - Framing Elements - compact schedule I
 - Framing Elements - compact schedule II
 - Framing Elements - extended schedule
 - Framing Member - Mark Definition Schedule
 - Rafters - extended schedule
 - Trusses - extended schedule



Structural Framing Families

Wood webs for trusses. Automatically comes with nested families of wood trusses.

- Families that can be inserted:

Wood Trusses

I_Truss_Common Truss
I_Truss_Corner Girder Truss
I_Truss_Gable Truss
I_Truss_Hip End Truss
I_Truss_Jack Rafter
I_Truss_Jack Truss
I_Truss_Mono Pitch Truss
I_Truss_Scissors Truss
I_Truss_Scissors Truss Mono
I_Truss_Special Multitype Truss P4_SHO
I_Truss_Special Multitype Truss P4_SHO
I_Truss_Standart Overhang Frame
I_Truss_CommonF_Truss FloorTopBearing
I_Truss_Valley Truss
I_Truss_Valley Truss Gable

Beam and beam sets

I_Truss_Board Beam
I_Truss_Chord Frame

I_Truss_Web_Bottom Chord FL
I_Truss_Web_Bottom Chord H
I_Truss_Web_Bottom Chord M
I_Truss_Web_Bottom Chord OF
I_Truss_Web_Bottom Chord S
I_Truss_Web_Bottom Chord SC
I_Truss_Web_Bottom Chord SCC
I_Truss_Web_Diagonal Web FL
I_Truss_Web_Diagonal Web O
I_Truss_Web_Diagonal Web S
I_Truss_Web_Diagonal Web SC
I_Truss_Web_Frame Web
I_Truss_Web_Heel Web O
I_Truss_Web_Heel Web OF
I_Truss_Web_Heel Web S
I_Truss_Web_Heel Web SC
I_Truss_Web_Rafter
I_Truss_Web_Top Chord H
I_Truss_Web_Top Chord M
I_Truss_Web_Top Chord MG
I_Truss_Web_Top Chord P
I_Truss_Web_Top Chord S
And others.

Structural Framing Families

3D Truss System Grids

I_Truss_Truss System Grid BarnEnd_LT
I_Truss_Truss System Grid GableEnd_LT
I_Truss_Truss System Grid HipEnd_LT
I_Truss_Truss System VS Grid ValleySet_LT

**Grid lines for 3D truss system grids.
Automatically comes with nested
families of 3D TSG.**

I_Truss_TSGrid_CT_Grid
I_Truss_TSGrid_HET_Grid
I_Truss_TSGrid_HF_Grid
I_Truss_TSGrid_J_Grid
I_Truss_TSGrid_TB_Grid
I_Truss_TSGrid_VT_Grid

Note: Family name begins with “I_Truss_” for imperial units and with “M_Truss_” for metric units.

Imperial units	Metric units
I_Truss_Common Truss	M_Truss_Common Truss

Increase your productivity !



AGA CAD Ltd.
Zalgirio 112A, LT-09300 Vilnius,
Lithuania
Tel. +370 5 2398111
Fax +370 5 2398113
Email info@aga-cad.lt
info@tools4revit.com
www.tools4revit.com