

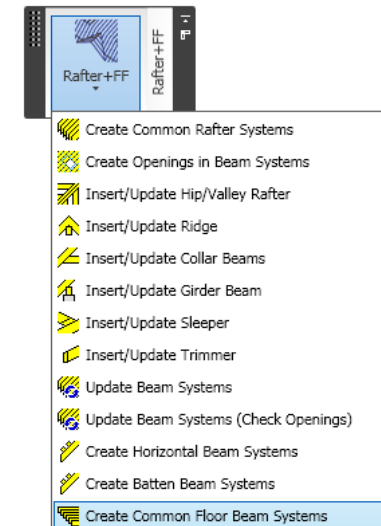
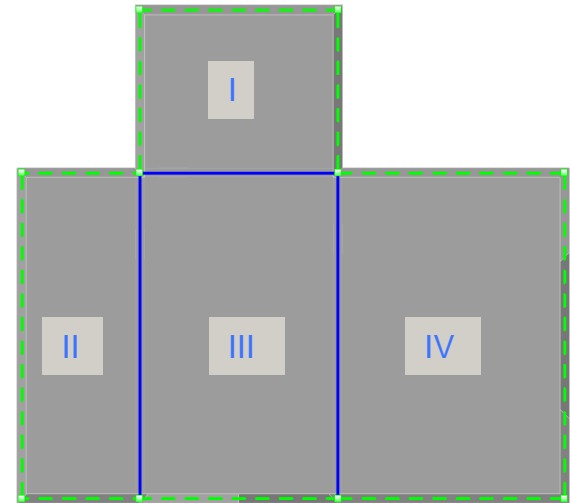
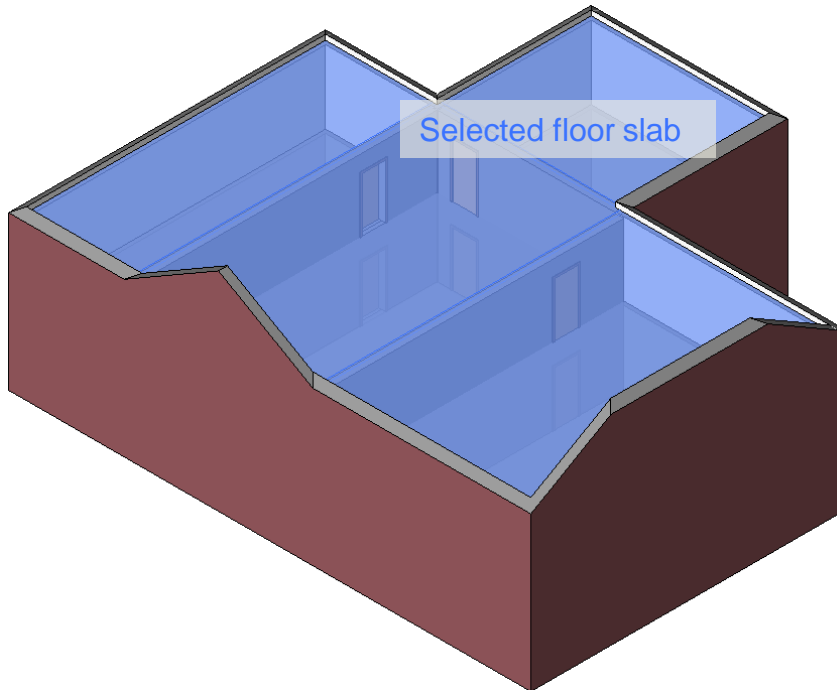


Create Common Floor Beam Systems Rafter+FF



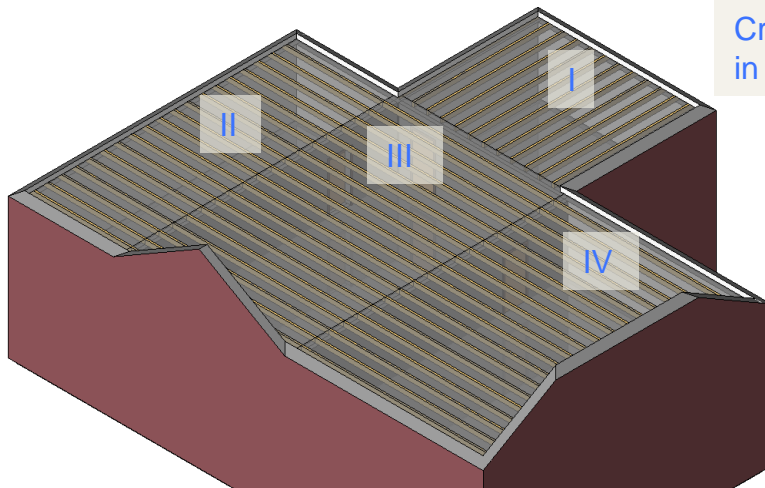
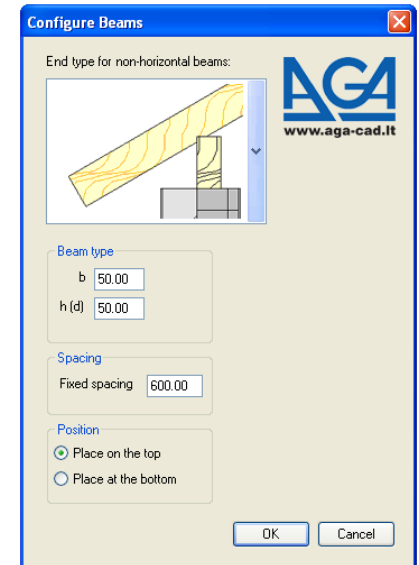
Create Floor Beam System

- If it's needed, divide a floor slab into segments before creating a floor beam system. Then a separate floor beam system will be created in the every segment.
- Select a floor slab.
- Select *Create Common Floor Beam Systems* from the menu.

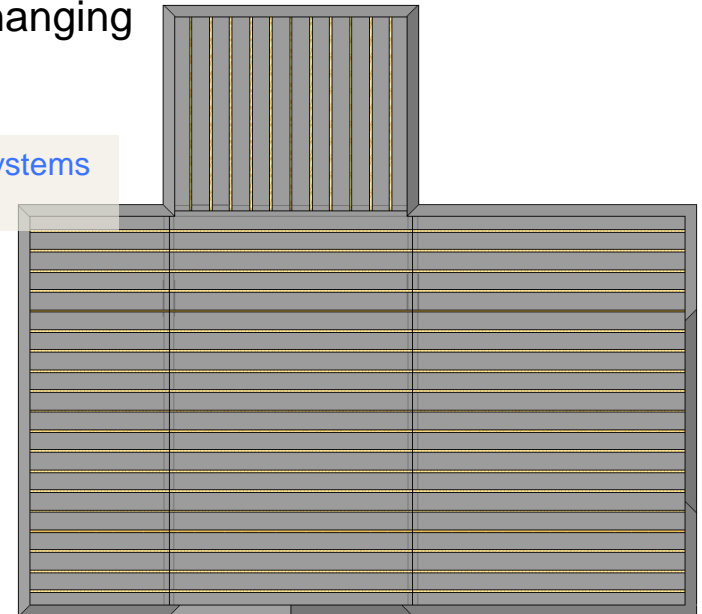


Create Floor Beam System

- Now you can choose *End cut type* of floor beams.
- Provide dimensions of the beam cross section: *width - b* and *height – h (depth – d)*.
- Enter a distance of *fixed beam spacing* and click *OK*.
- Select a placement of beams. They can be placed on the top or at the bottom of the slab.
- If you need to change the direction of beams, do it by changing the beam direction in the beam system editing mode.

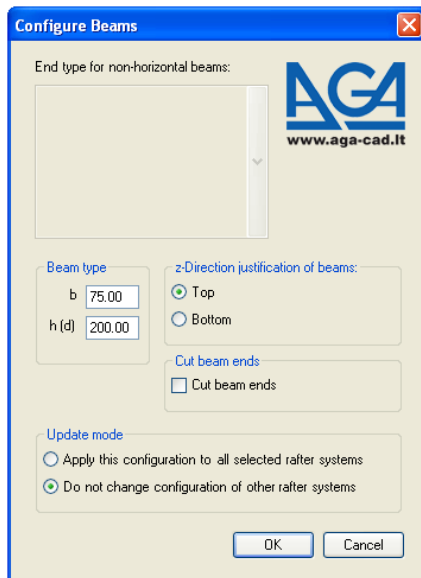
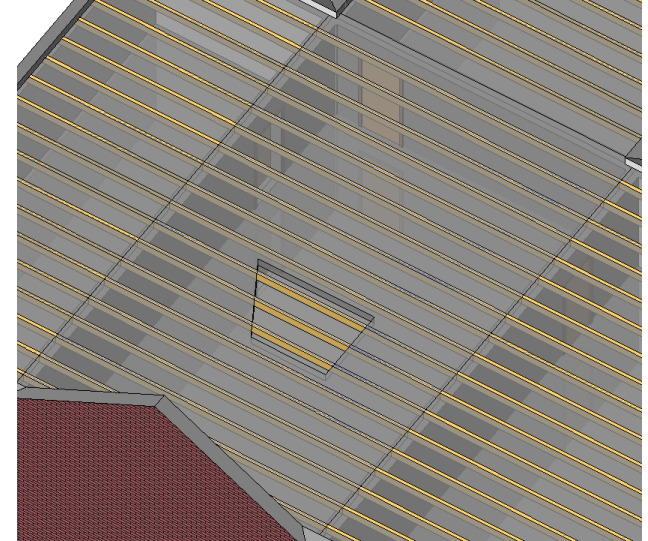


Created four floor beam systems in one floor slab

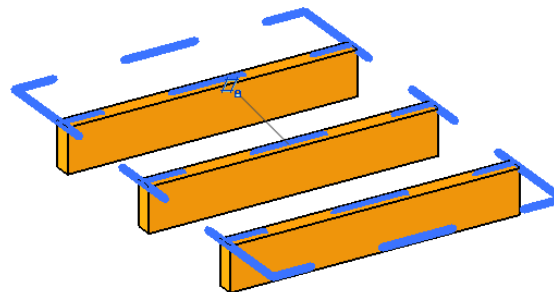


Update Floor Beam System

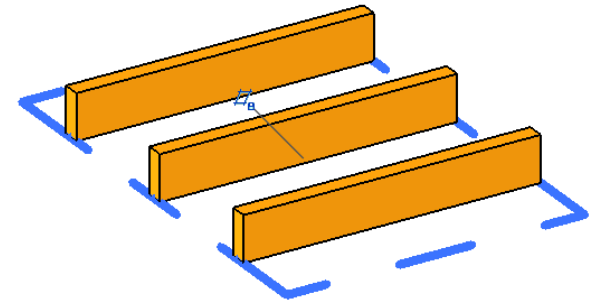
- Select single or multiple floor beam systems and select the command *Update Beam Systems (check openings)* from the menu.
- Provide dimensions of the beam cross section: *width - b* and *height – h (depth – d)*.
- Select Top or Bottom z-Direction justification of beams.



Z-Direction justification Top



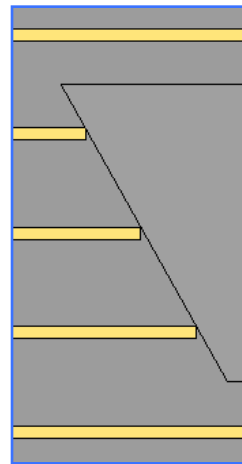
Z-Direction justification Bottom



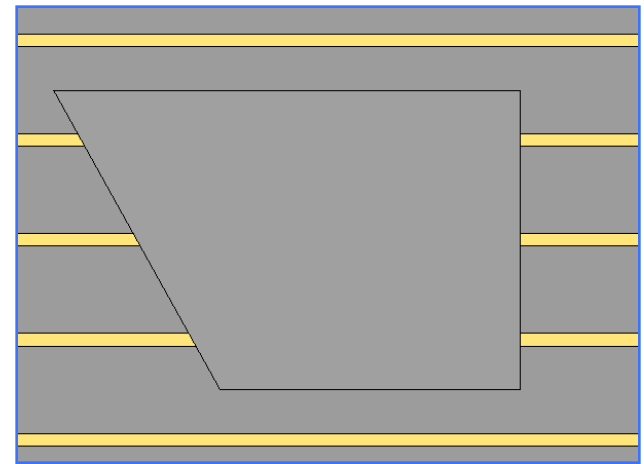
Update Floor Beam System

- Mark the option *Cut beam ends*, if you want to cut beam ends not perpendicular to the boundary.
- If the option *Do not change configuration of other rafter systems* is selected, no change for beam dimensions are made, joints and cuts are updated.
- If the option *Apply this configuration to all selected rafter systems* is selected, end cut and cross section dimensions are updated, joints and cuts are updated.
- Click *OK* to update beam systems.

NOTE: *Update mode* doesn't appear when you want to update only one beam system.



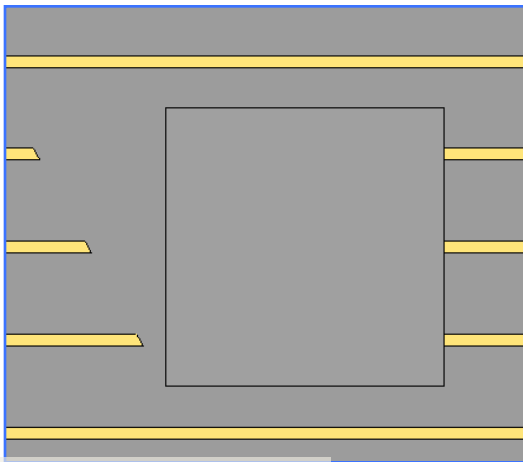
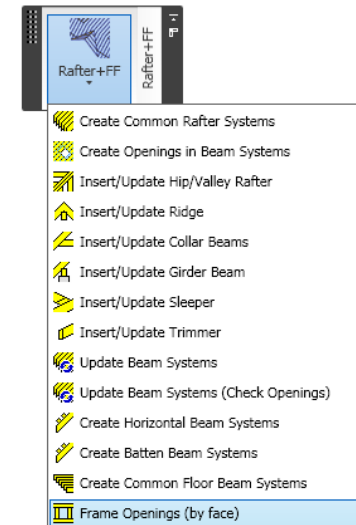
Cut beam ends option not checked



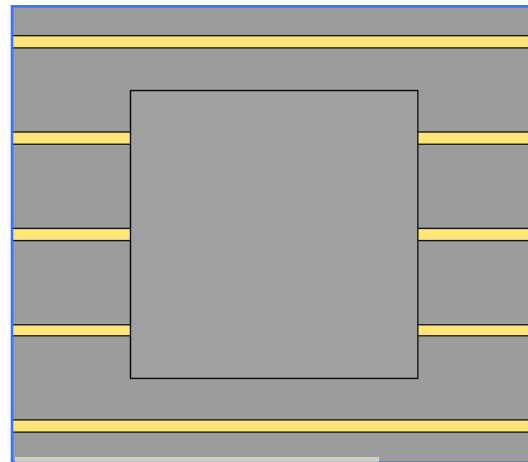
Cut beam ends option checked

Update Floor Beam System II

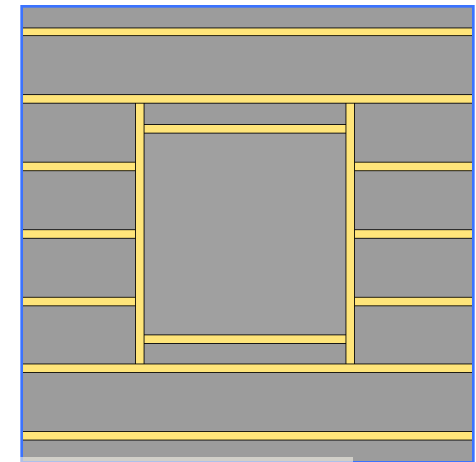
- If the opening changes, select the floor beam system and run the command *Update Beam Systems (check openings)* from menu and click *OK*.
- Use the *Frame openings (by face)* command to frame that opening.



Changed opening

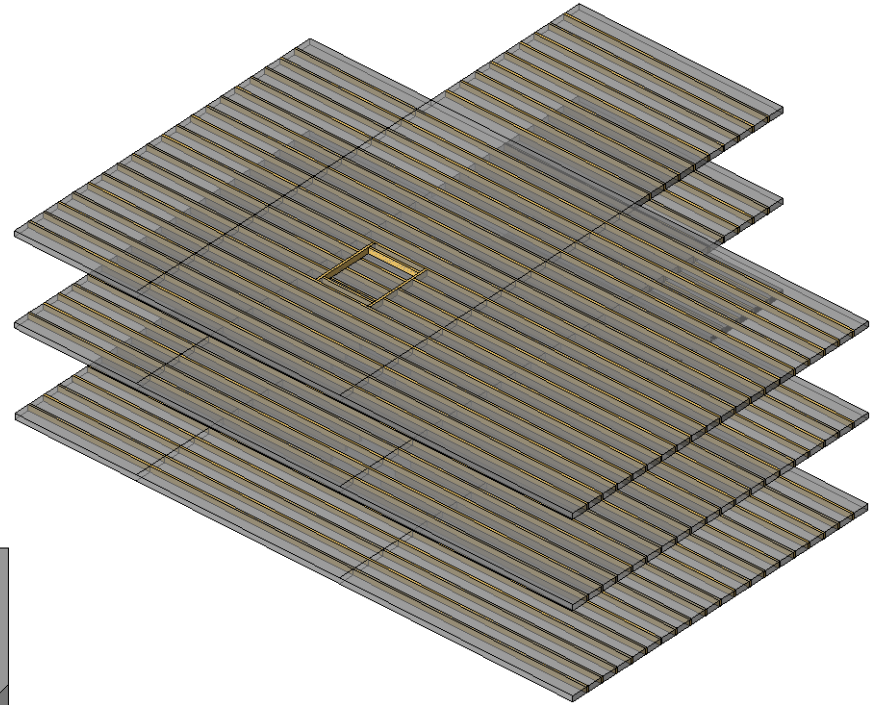
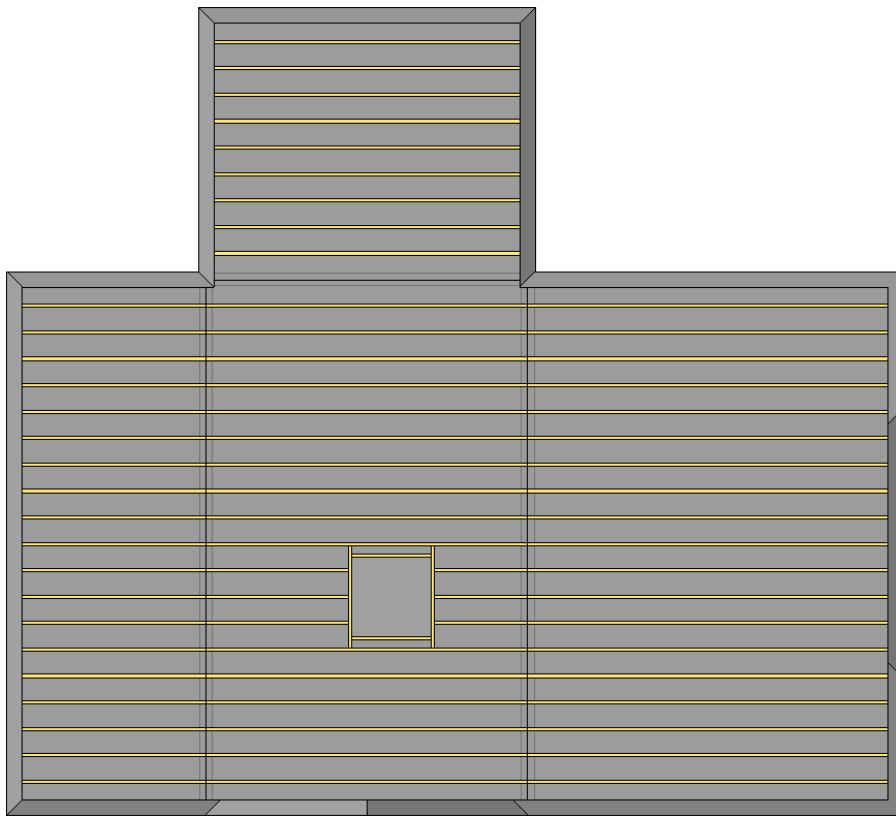


Updated beam system



Framed opening

Floor Beam System Example



Increase your productivity !



AGA CAD Ltd.
Zalgirio 112A, LT-09300 Vilnius,
Lithuania
Tel. +370 5 2398111
Fax +370 5 2398113
Email info@aga-cad.lt
info@tools4revit.com
www.tools4revit.com