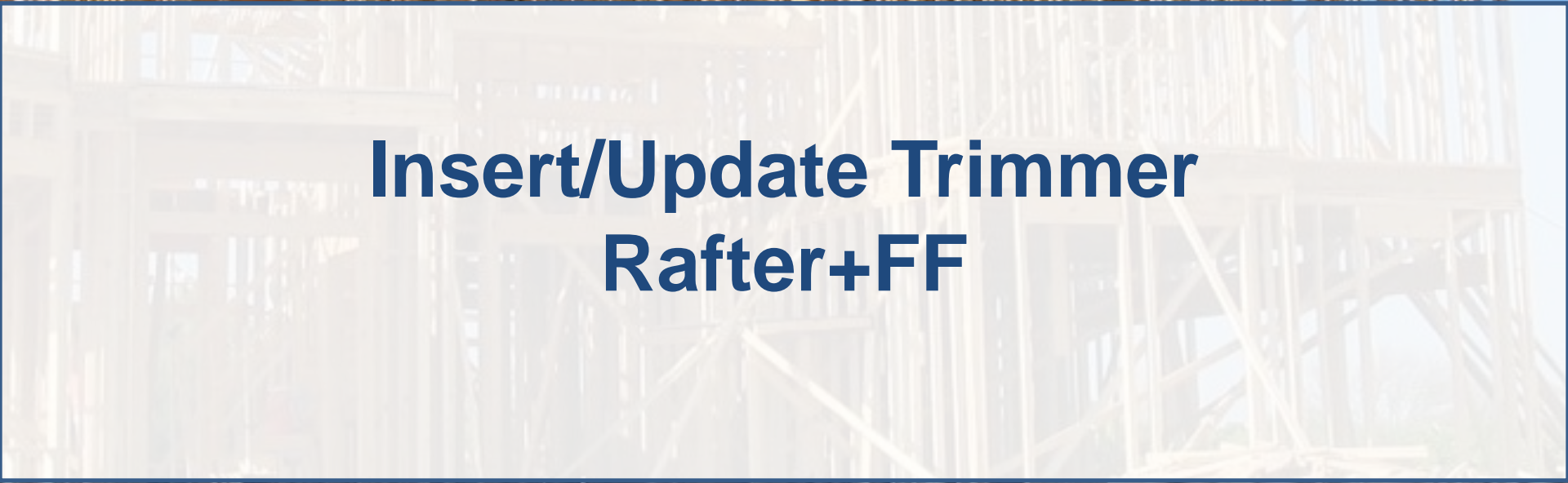


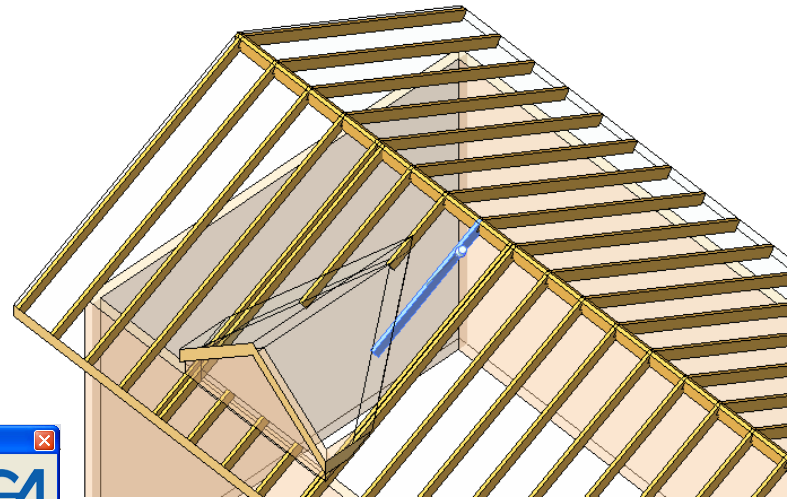


# Insert/Update Trimmer Rafter+FF



# Insert Trimmer

- Select any rafter to insert a trimmer.
- Select the function *Insert/Update trimmer* from the menu.



- Create common rafter systems
- Create openings in beam systems
- Insert/Update hip/valley rafter
- Insert/Update ridge
- Insert/Update collar beams
- Insert/Update girder beam
- Insert/Update sleeper
- Insert/Update trimmer

Trimmer

AGA  
www.aga-cad.it

Beam type  
b 75.000  
h (d) 200

Placement  
 Place on selected beam start/bottom point  
 Place on selected beam end/top point

Rotation  
 Vertical  
 Horizontal  
 Custom  
Rotation angle 0.000 Calculate by beam... Help

Z-Direction position  
 Cut top by slope  
 Don't cut top (align top edge with slope)  
 Do nothing  
Vertical offset 0.000 Help

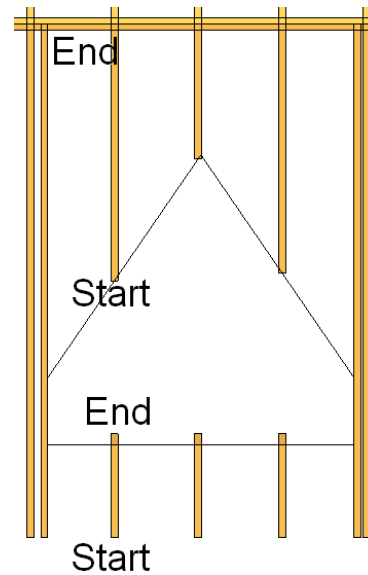
Position in beam system  
 Inside of beam system  
 Outside of beam system Help

End cuts  
Start  
 Don't cut  
 Bisection  
 Perpendicular to bisection  
 Perpendicular to next line  
 Cut by next line axis  
 Like end  
End  
 Don't cut  
 Bisection  
 Perpendicular to bisection  
 Perpendicular to next line  
 Cut by next line axis  
 Like start Help

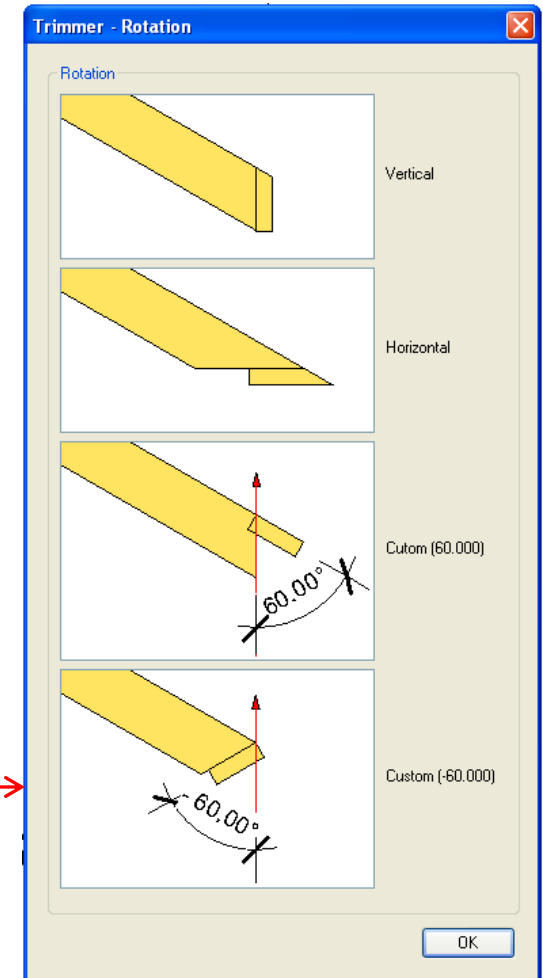
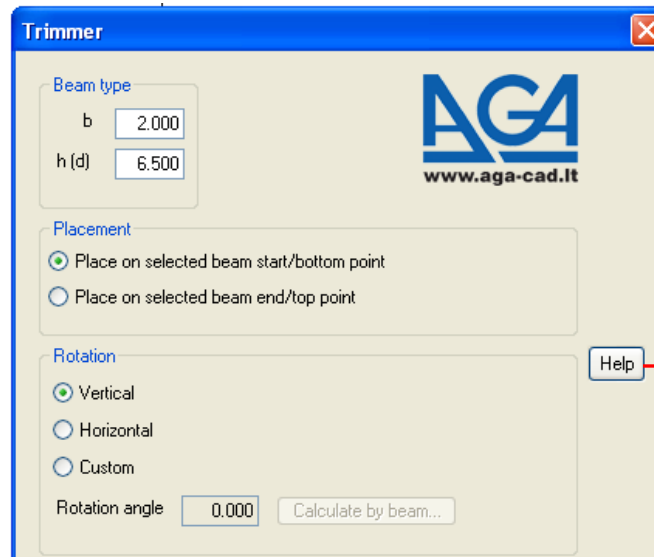
OK Cancel

# Insert Trimmer

- Provide dimensions of Beam cross section: *width* - **b** and *height (depth)* – **h (d)**.
- Select a placement of trimmer, place on the selected beam start/bottom or end/top point.



- Choose Rotation of trimmer.



# Insert Trimmer

- Indicate Z-Direction position
- Indicate Position in beam system

## Z-Direction position

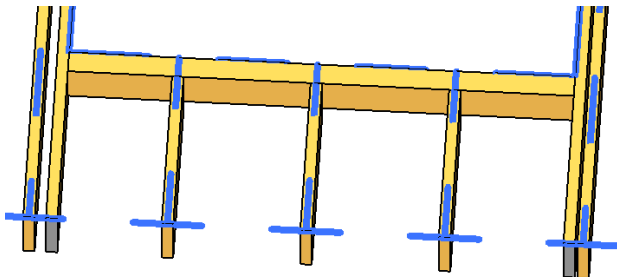
- Cut top by slope
- Don't cut top (align top edge with slope)
- Do nothing

Vertical offset

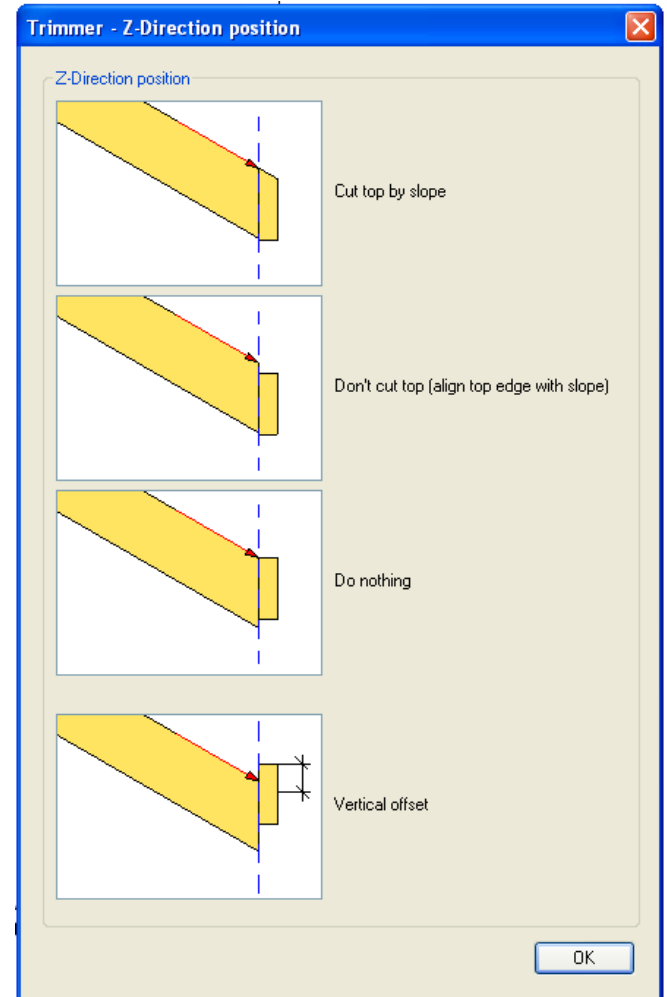
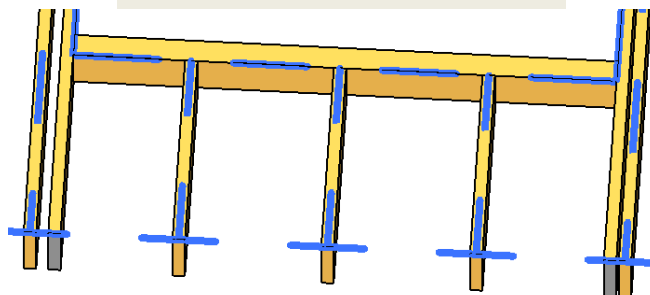
## Position in beam system

- Inside of beam system
- Outside of beam system

Inside of beam system

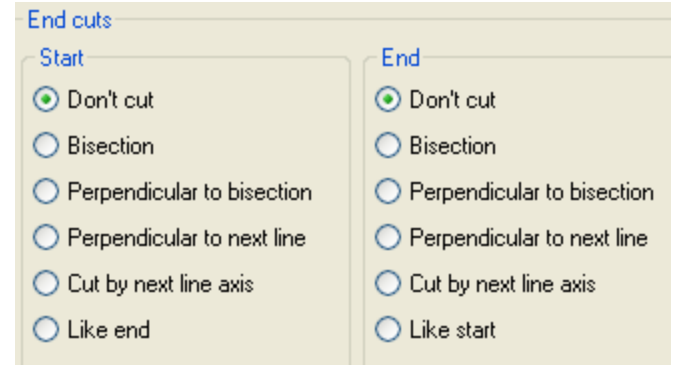
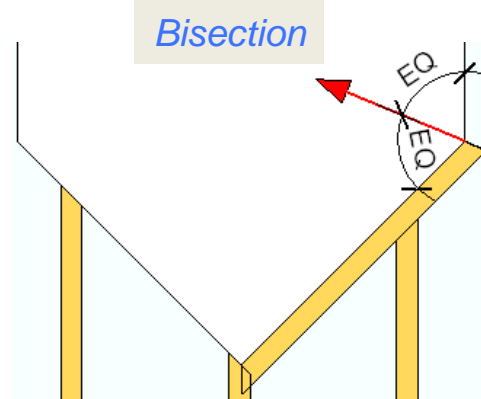
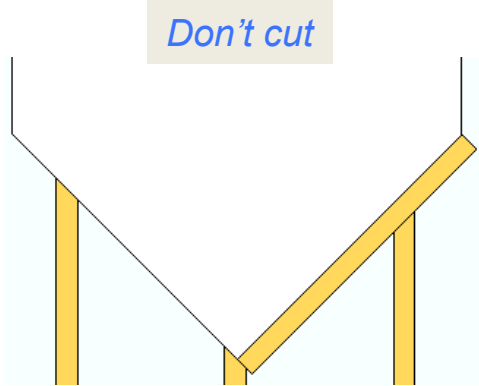


Outside of beam system

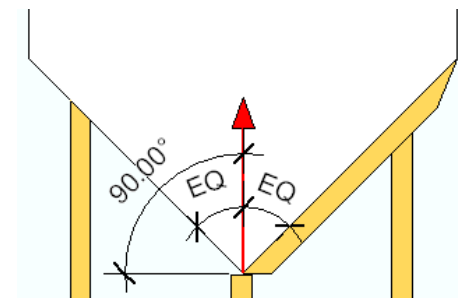


# Insert Trimmer

- Select start and end cuts



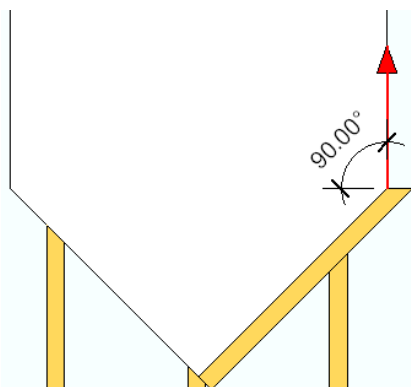
*Perpendicular to bisection*



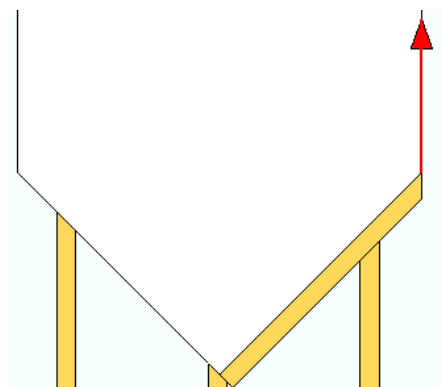
*Like start*

*Like end*

*Perpendicular to next line*

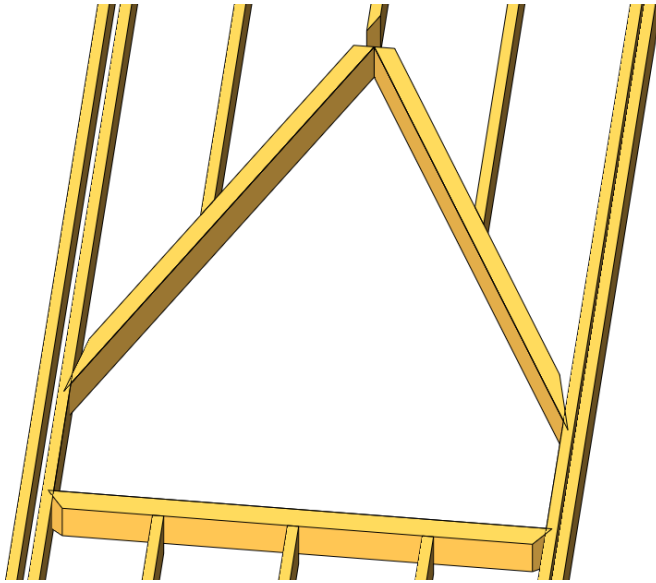


*Cut by next line axis*

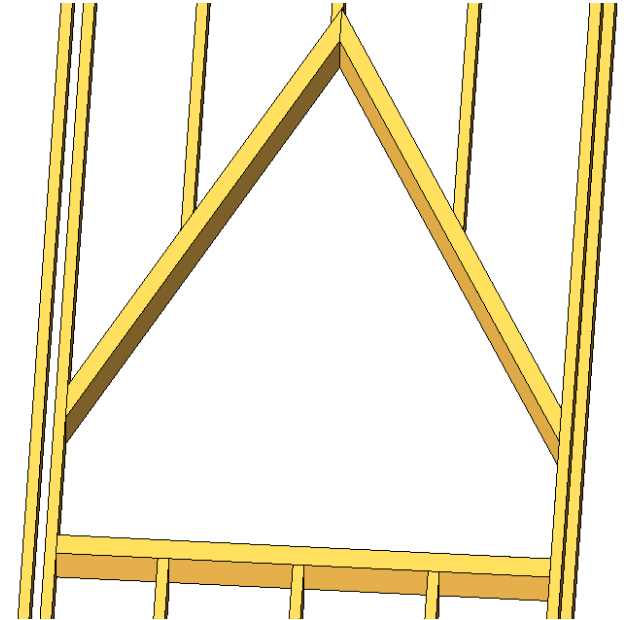


# Update Trimmer

- Select a trimmer you want to update.
- Select the function *Insert/Update trimmer* from the menu.
- Make your changes in Trimmer window and click *OK*.



Before updating trimmers



Updated trimmers

# Increase your productivity !



AGA CAD Ltd.  
Zalgirio 112A, LT-09300 Vilnius,  
Lithuania  
Tel. +370 5 2398111  
Fax +370 5 2398113  
Email [info@aga-cad.lt](mailto:info@aga-cad.lt)  
[info@tools4revit.com](mailto:info@tools4revit.com)  
[www.tools4revit.com](http://www.tools4revit.com)