

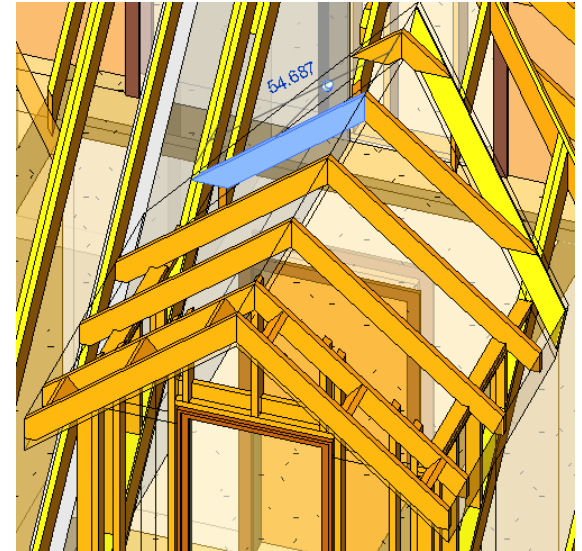
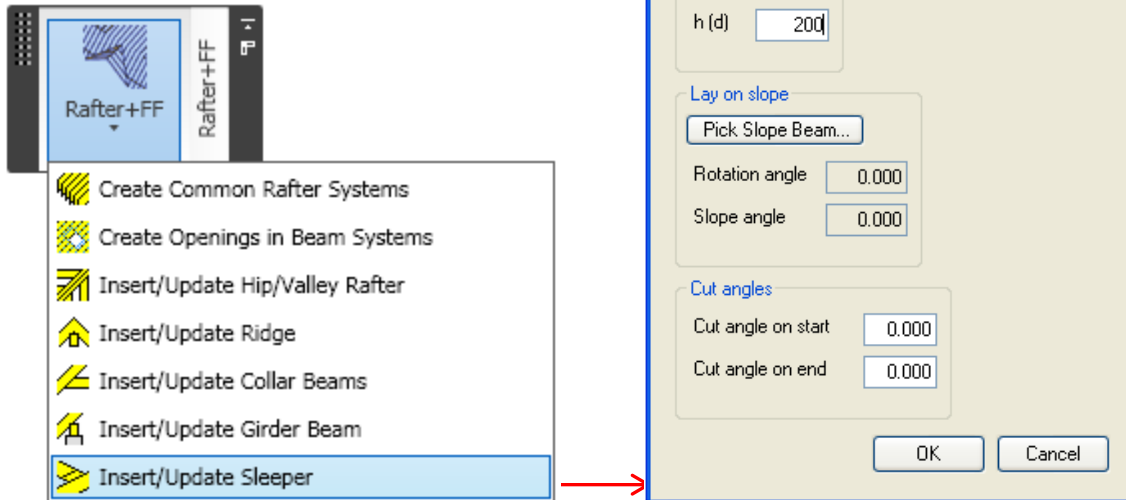


Insert/Update Sleeper Rafter+FF



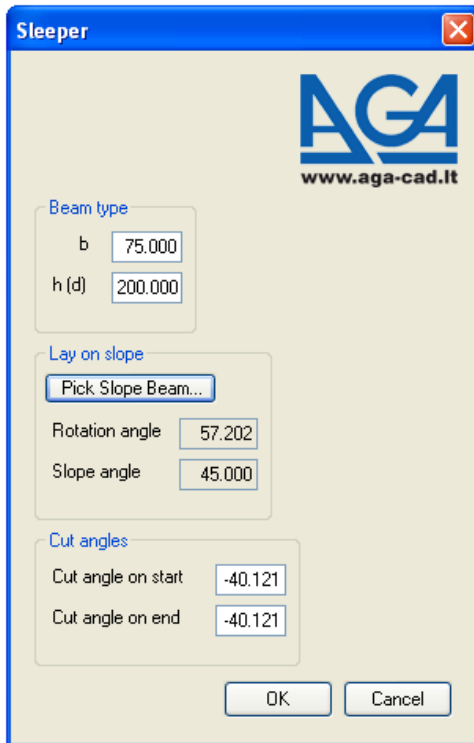
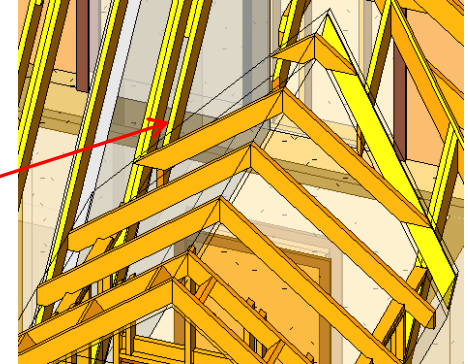
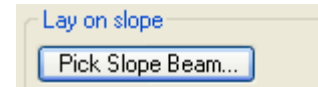
Insert Sleeper

- Select a rafter to insert a sleeper.
- Select the function *Insert/Update sleeper* from the menu.

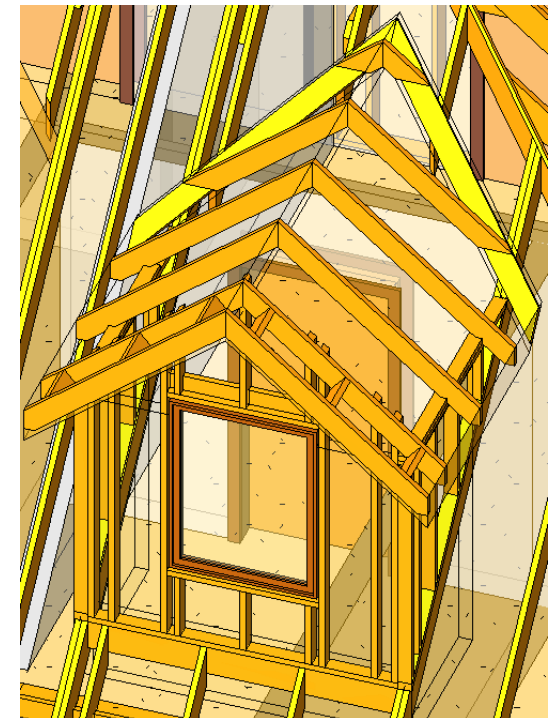


Insert Sleeper

- Provide dimensions of Beam cross section: *width* - **b** and *height (depth)* – **h (d)**.
- *Pick Slope Beam*

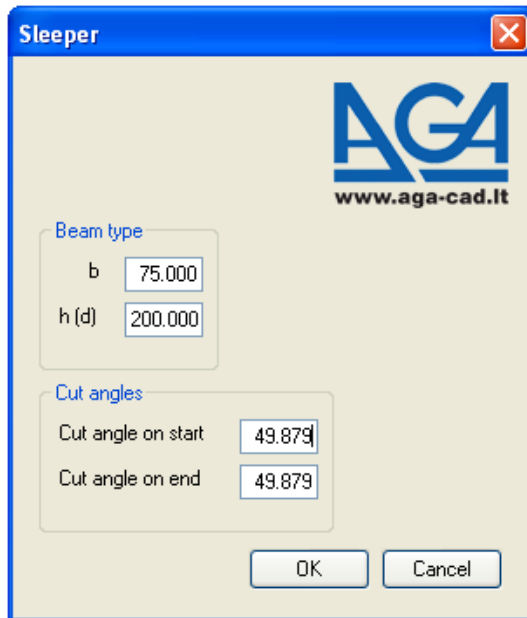


When Slope beam is selected Rotation, Slope angles and Cut angles are set automatically. It is possible to adjust these values if it is needed.



Update Sleeper

- Select the sleeper to modify.
- Select the function *Insert/Update sleeper* from the menu.
- Make your changes in Sleeper window and click *OK*.



Sleeper

AGA
www.aga-cad.it

Beam type

b 75.000

h (d) 200.000

Cut angles

Cut angle on start 49.879

Cut angle on end 49.879

OK Cancel



Increase your productivity !



AGA CAD Ltd.
Zalgirio 112A, LT-09300 Vilnius,
Lithuania
Tel. +370 5 2398111
Fax +370 5 2398113
Email info@aga-cad.lt
info@tools4revit.com
www.tools4revit.com