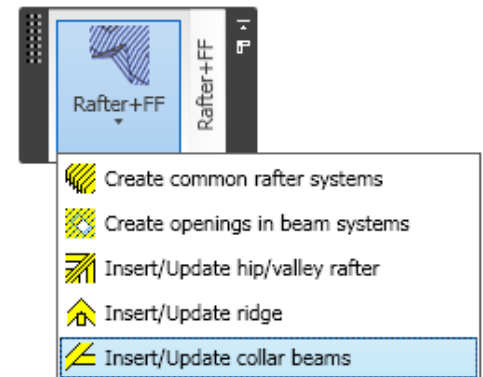
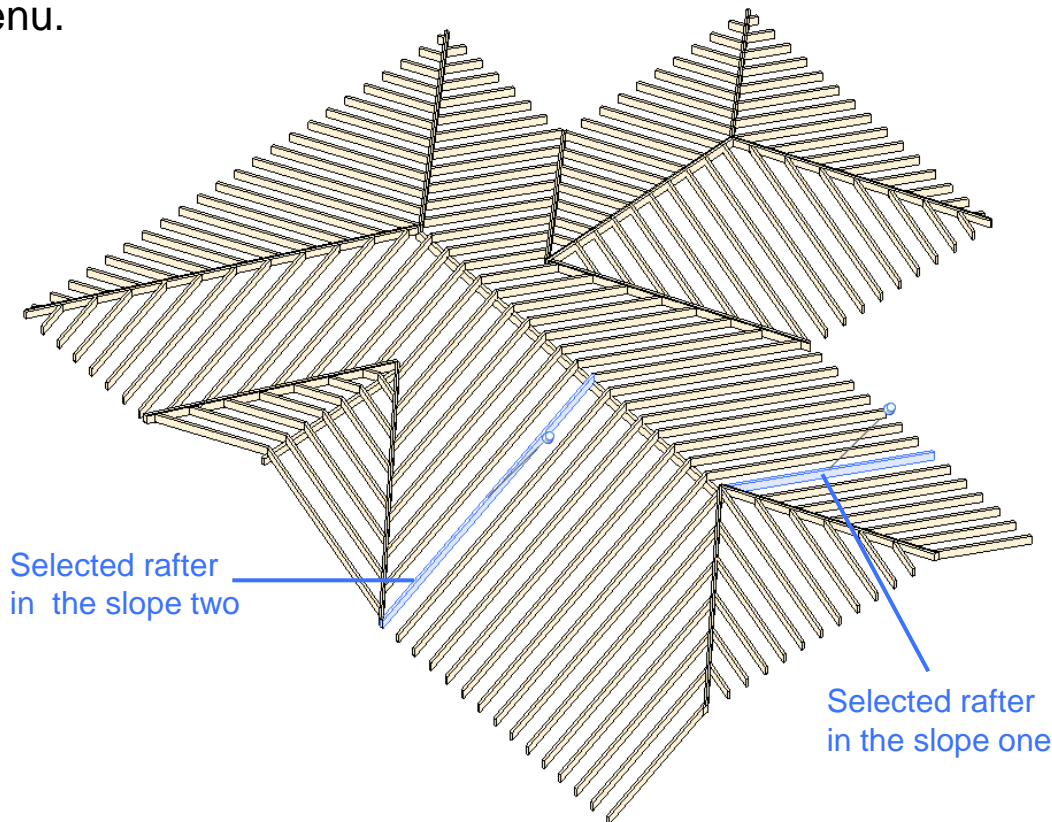




# Modeling Collar Beam Systems Rafter+FF

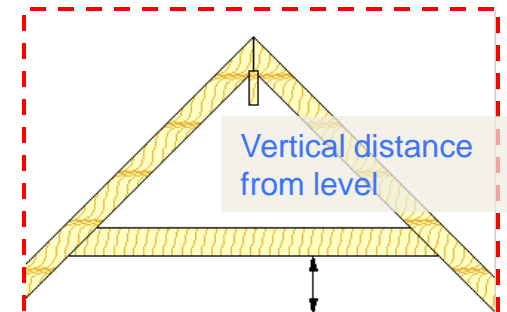
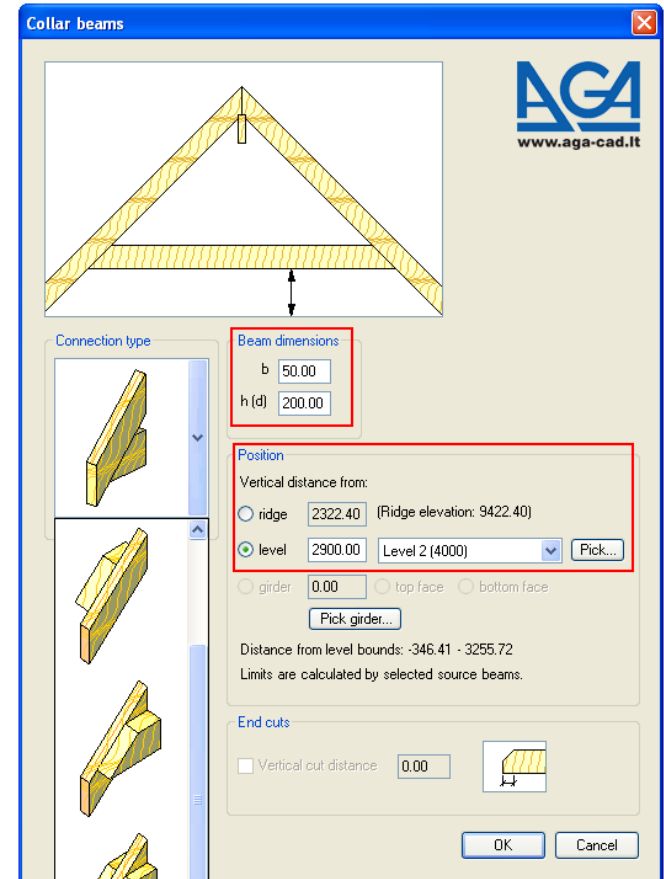
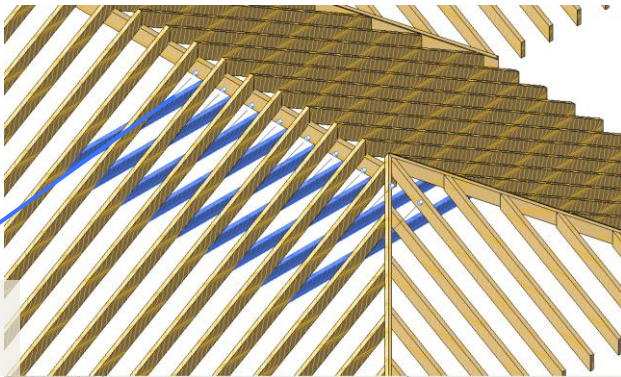
# Insert Collar Beams I

- Select any two rafters in adjacent slopes to insert collar beams (from...to).
- Select the function *Insert/Update collar beams* from the menu.



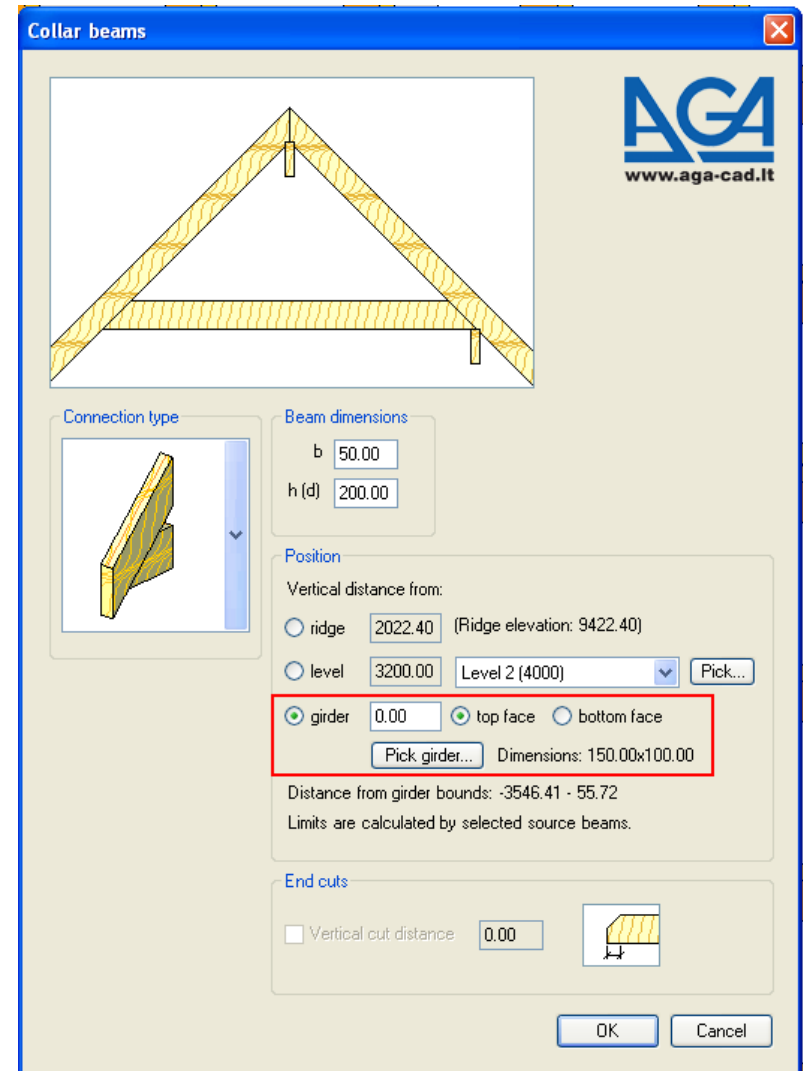
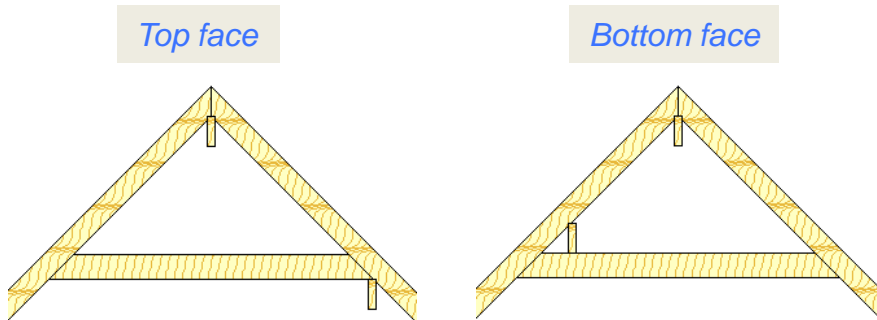
# Configure Collar Beams

- Select *Connection type*.
- Provide dimensions of Beam cross section: *width - b* and *height (depth) - h (d)*
- You can choose to provide the vertical distance from *ridge* or from *level*.
- Click the *Pick* button to inherit elevation from other element in the model.
- Pay attention to the boundary limits.
- Click *OK* to create Collar beam system.



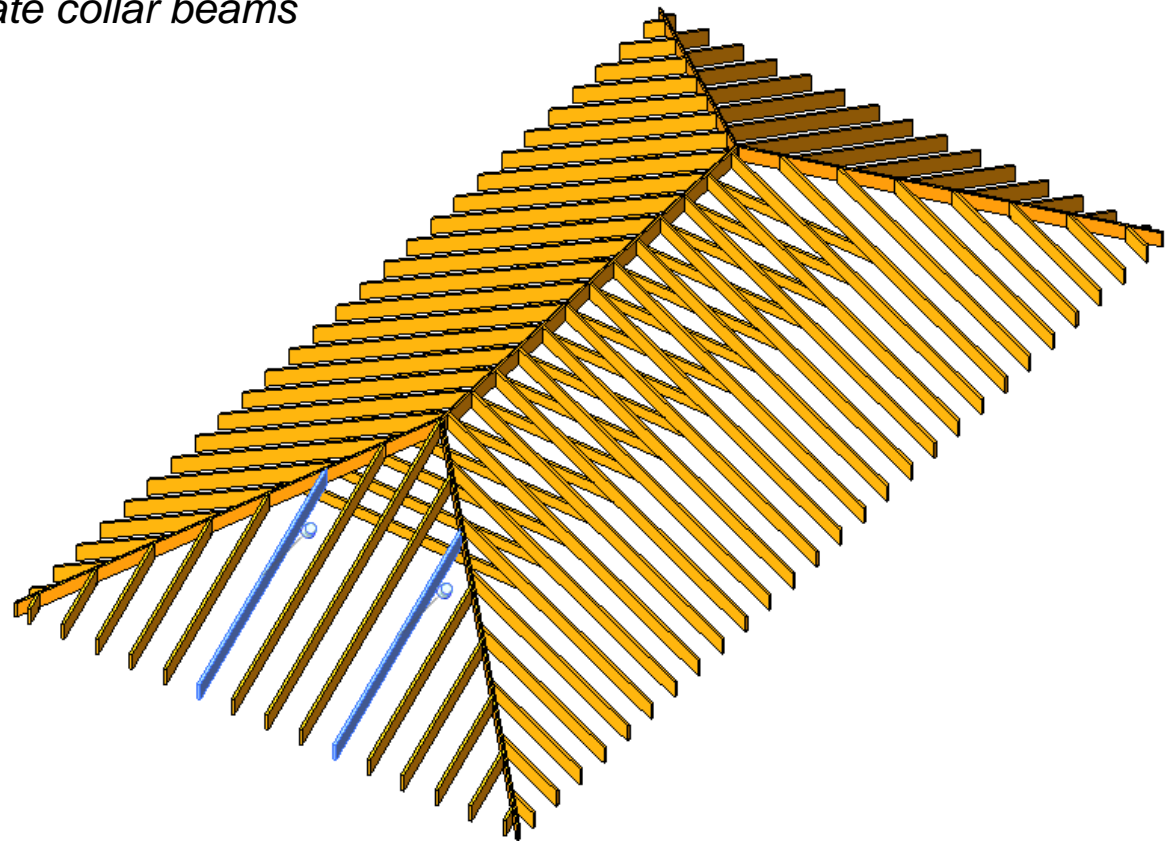
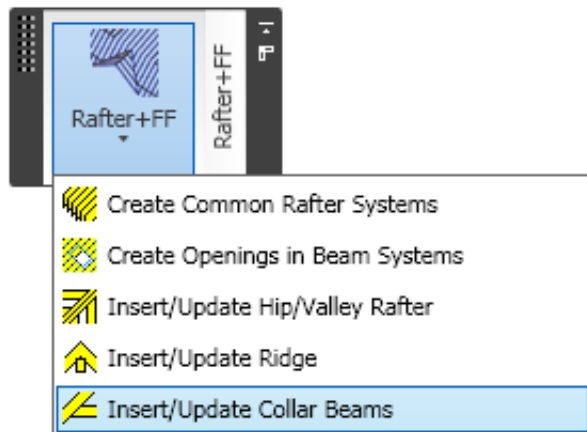
# Configure Collar Beams

- You can *pick girder* if you want to locate collar beams on or under the girder beam.
- Select the placement face: *top* or *bottom*.



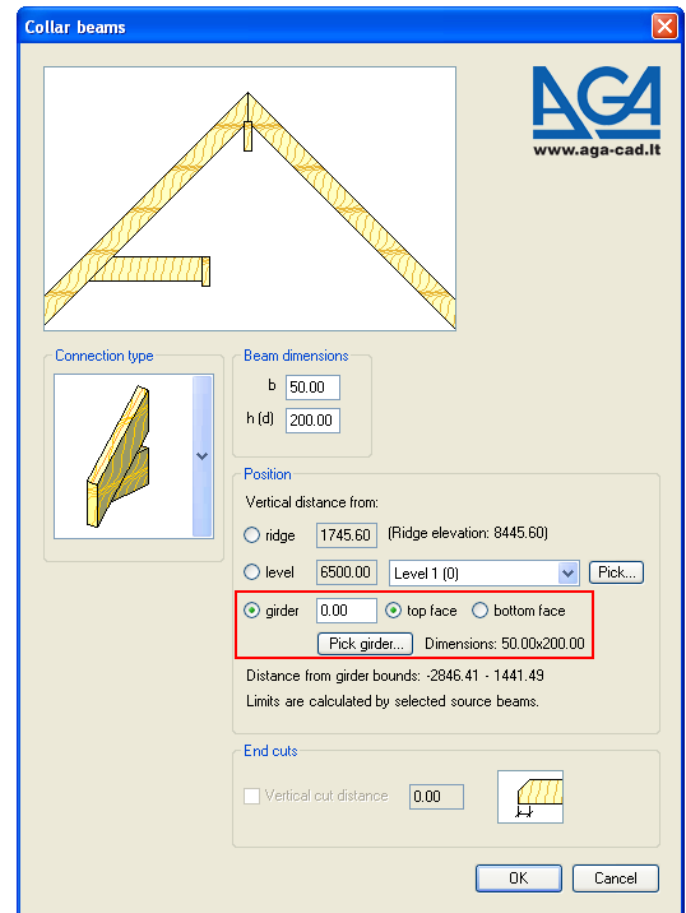
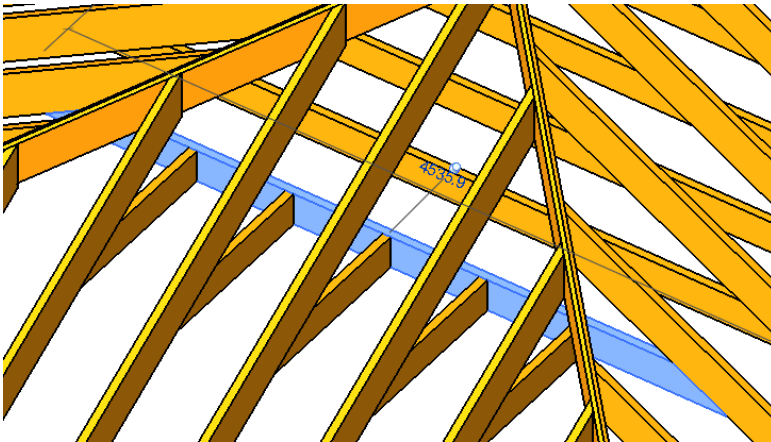
# Insert Collar Beams II

- Select any two rafters from the same slope to insert collar beams (from...to).
- Select the function *Insert/Update collar beams* from the menu.



# Configure Collar Beams

- Select *Connection type*.
- Provide dimensions of Beam cross section: *width - b* and *height (depth) - h (d)*.
- *Pick girder*.
- Click *OK* to create the Stub Joist system.

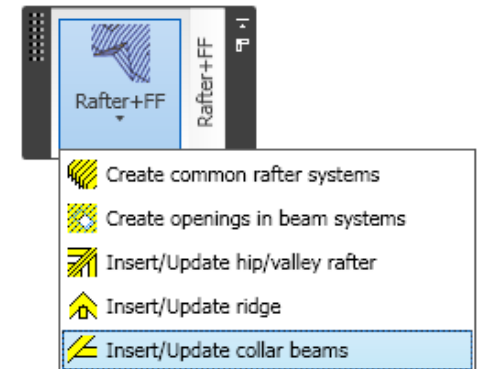
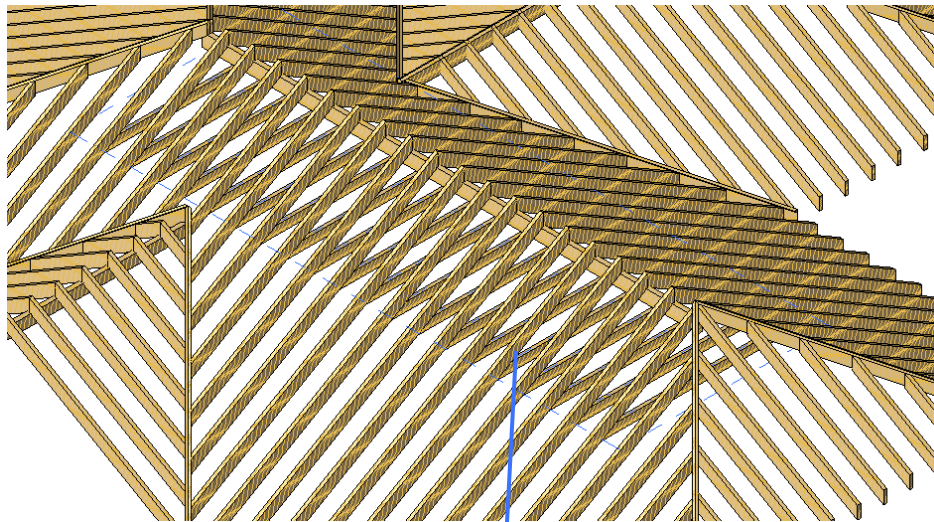
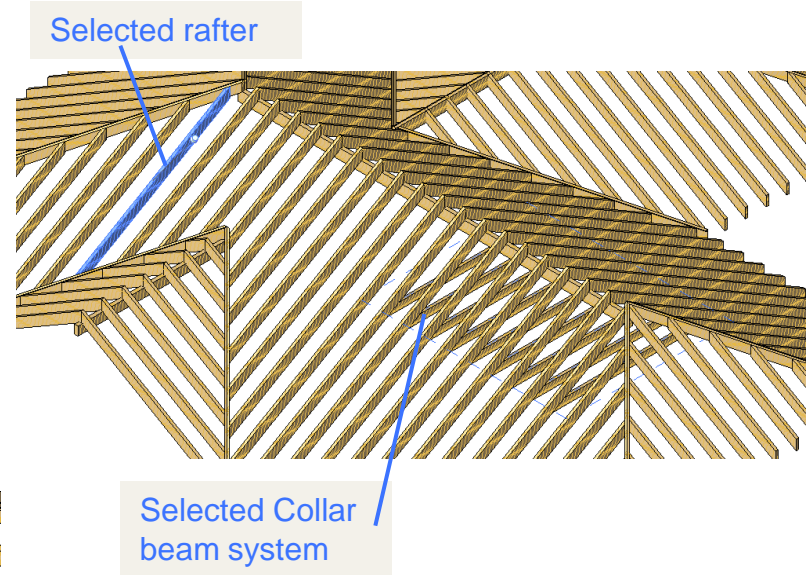


# Update Boundary of Collar Beam System

- Select Collar beam system and the one rafter (the collar beam system will be extended or trimmed to this rafter).
- Select the function *Insert/Update collar beams* from the menu.

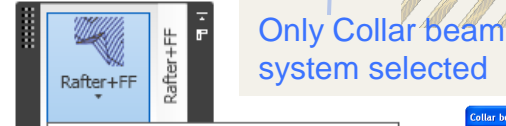
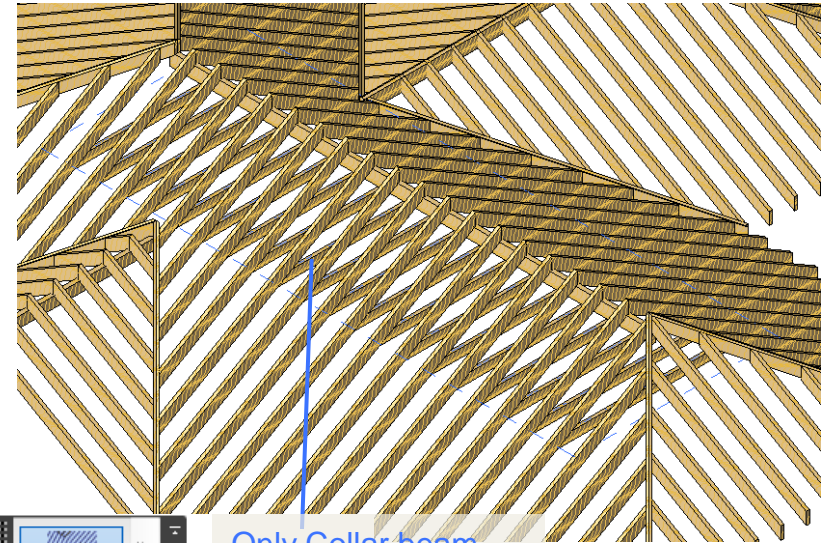
## NOTE

If you need to change collar beam dimensions or vertical distance select the collar beam system only.

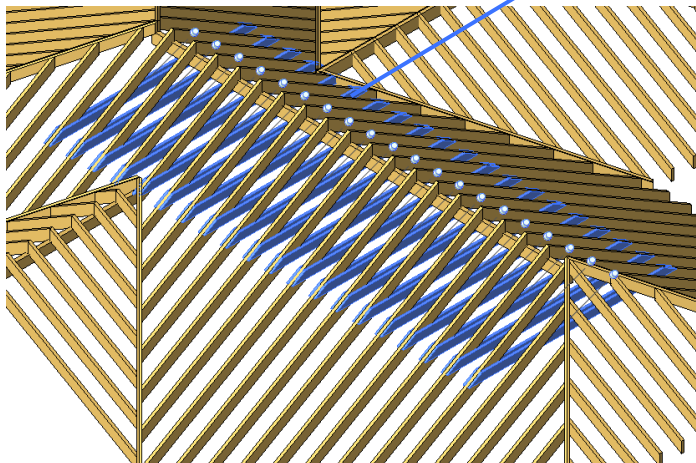


# Update Parameters of Collar Beam System

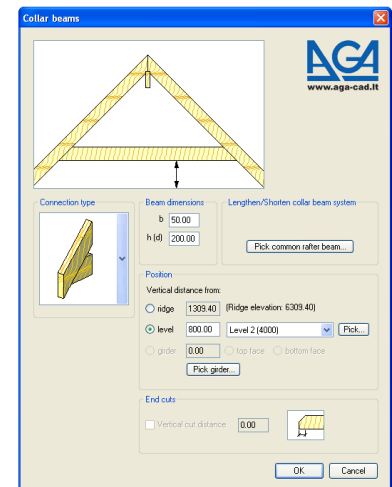
- Select Collar beams system only.
- Select the function *Insert/Update collar beams* from the menu.
- You can click the button *Pick common rafter beam* if you need to trim or extend the beam system.
- Make your changes in the configuration window and click *OK*.



- Create common rafter systems
- Create openings in beam systems
- Insert/Update hip/valley rafter
- Insert/Update ridge
- Insert/Update collar beams



Collar beam system updated





# Increase your productivity !



AGA CAD Ltd.  
Zalgirio 112A, LT-09300 Vilnius,  
Lithuania  
Tel. +370 5 2398111  
Fax +370 5 2398113  
Email [info@aga-cad.lt](mailto:info@aga-cad.lt)  
[info@tools4revit.com](mailto:info@tools4revit.com)  
[www.tools4revit.com](http://www.tools4revit.com)