

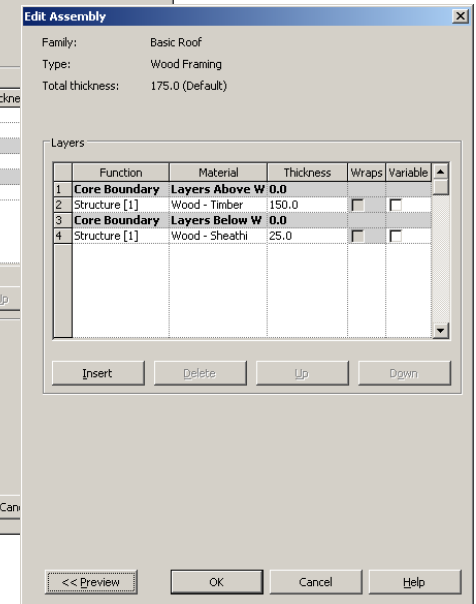
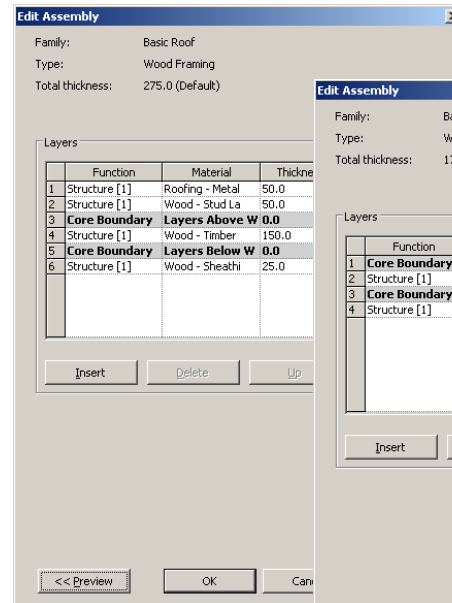
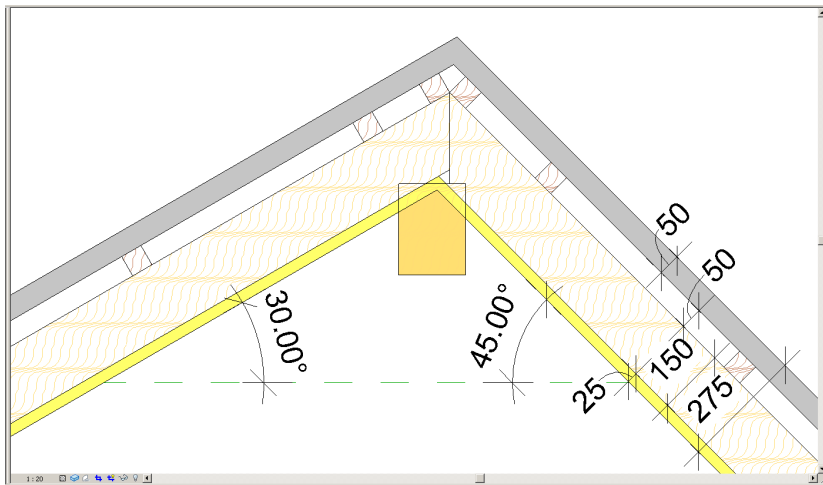
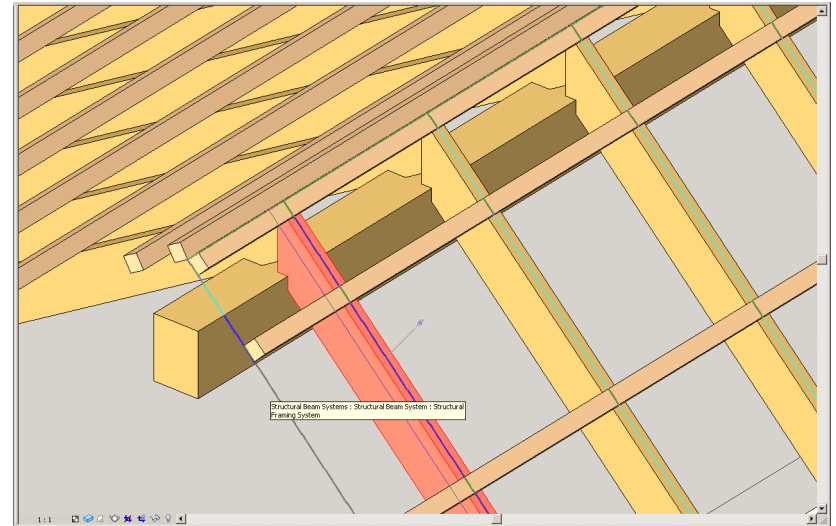


# Create Batten Beam Systems Rafter+FF



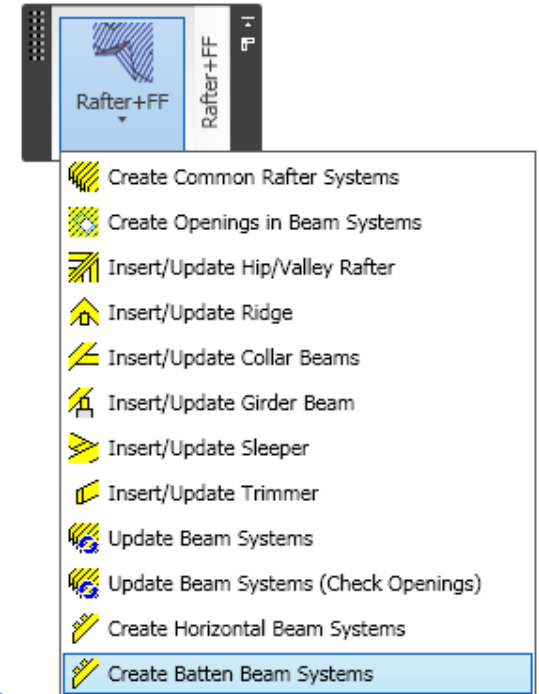
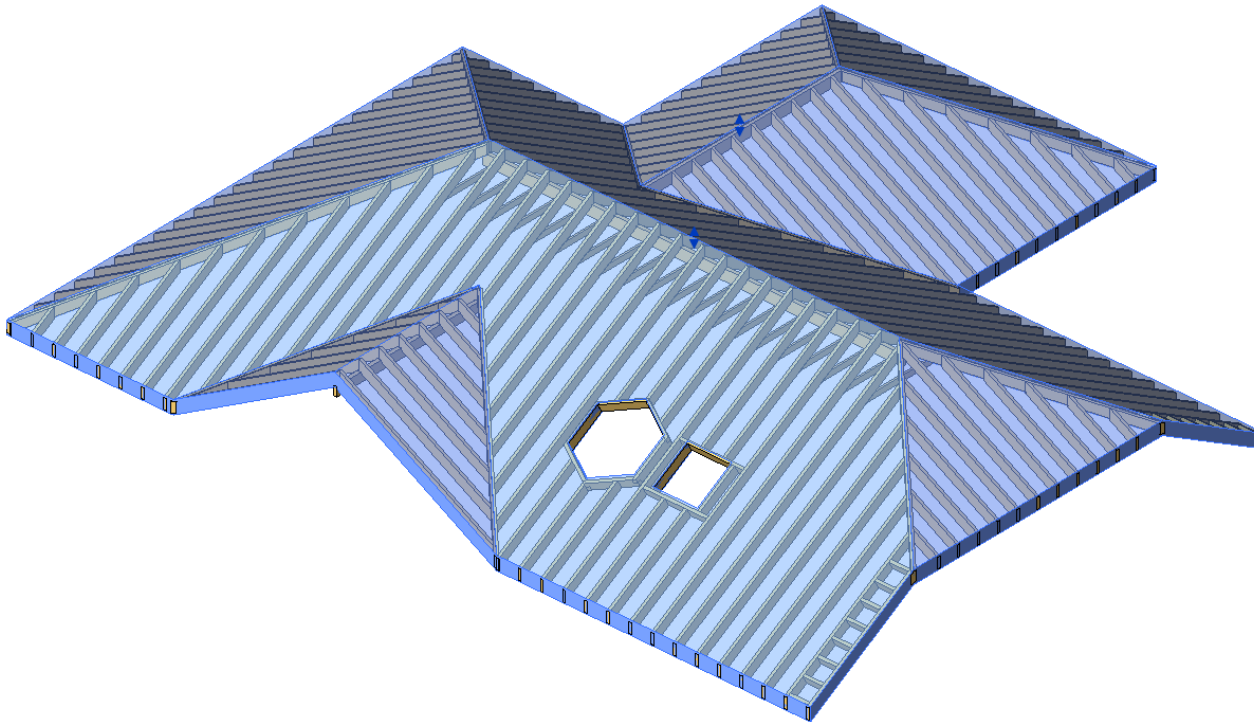
# Before Proceeding

- Please, read carefully the topic *“Roof framing method - How to frame correctly layers of the wood roof”*.



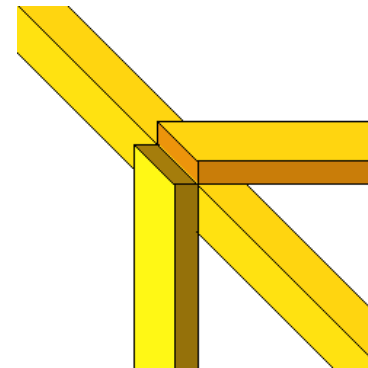
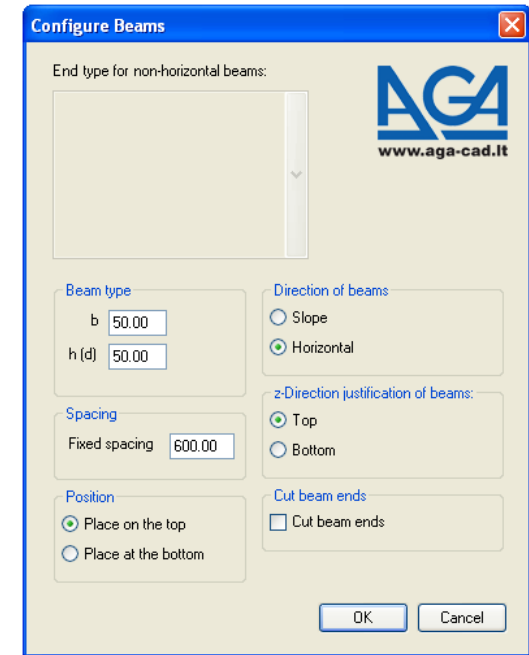
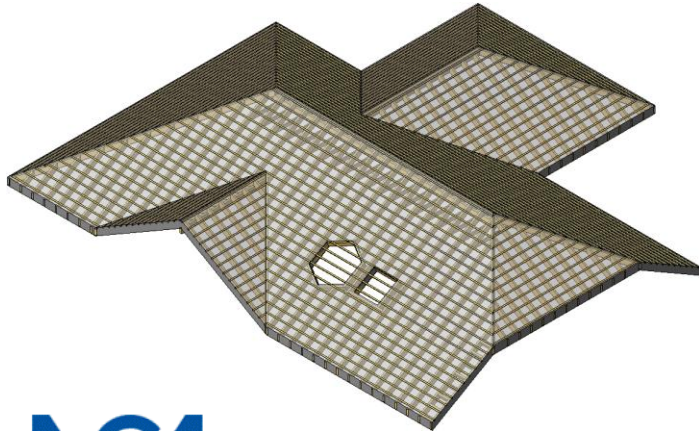
# Create Batten Beam Systems

- Select a roof.
- Select *Create batten beam systems* from the menu.

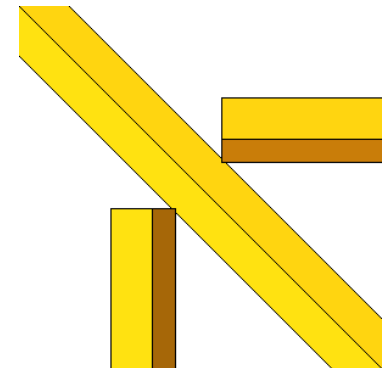


# Configure Batten Beams

- Provide dimensions of the beam cross section: *width - b* and *height - h* (*depth - d*).
- Select the direction of beams.
- Select z-Direction justification of beams.
- Mark the *Cut beam ends* checkbox if needed.
- Enter the distance of *fixed Batten spacing*.
- Select placement of rafters. They can be placed *on the top* or *at the bottom* of the roof and click *OK*.



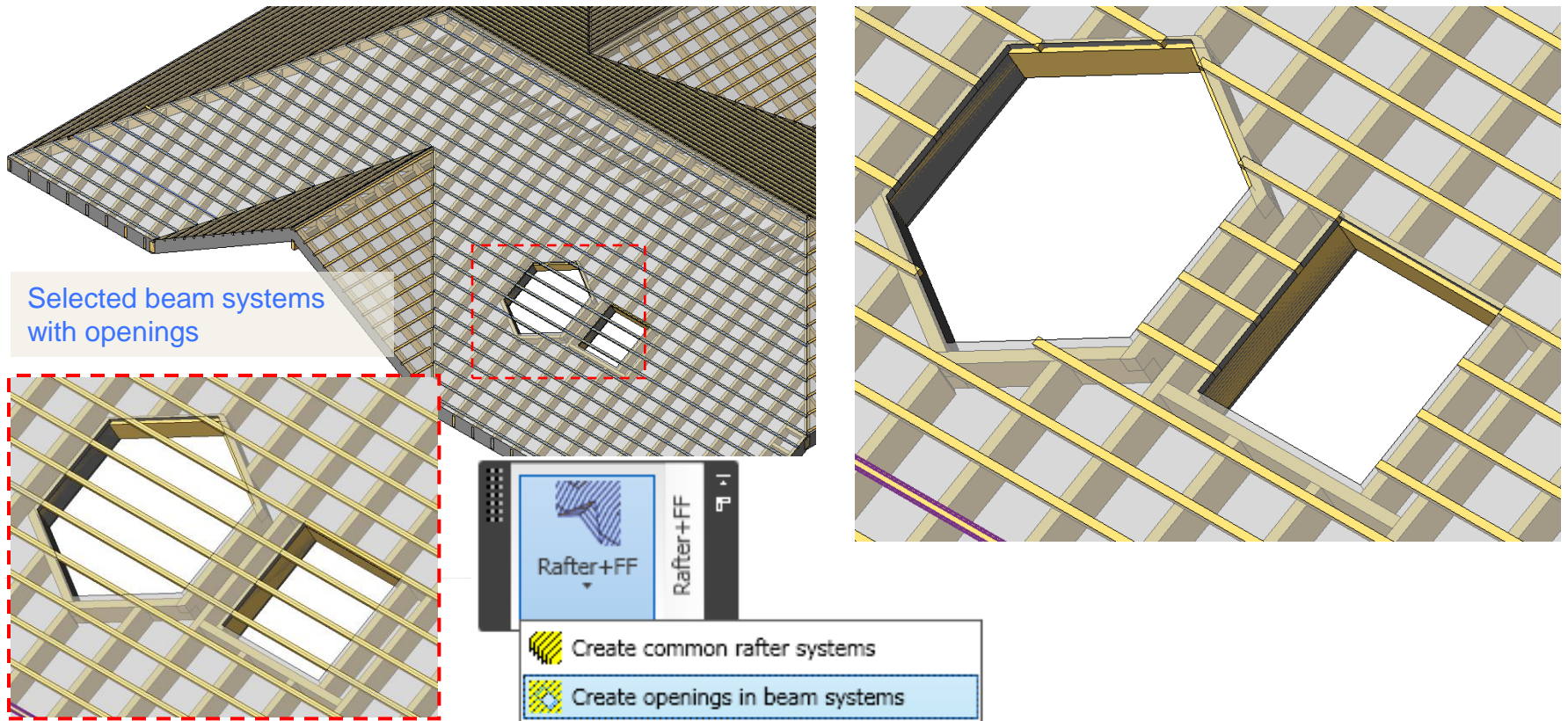
Cut beam ends  
option checked



Cut beam ends  
option unchecked

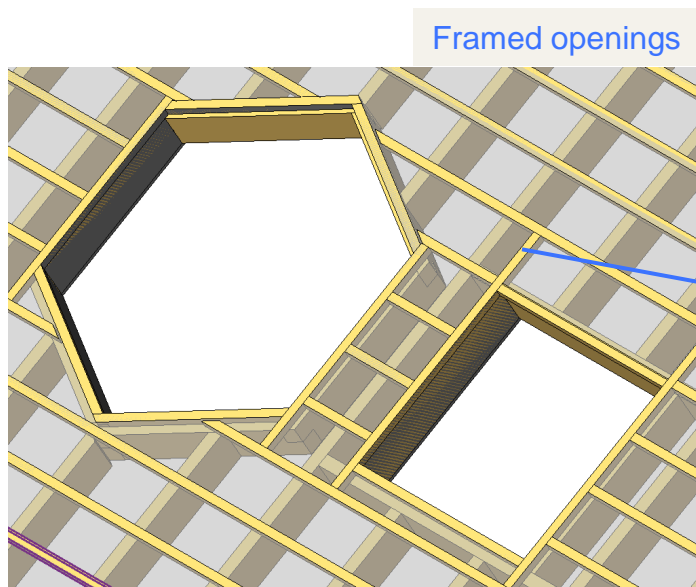
# Create Openings in Batten Beam System

- Select Batten Beam System.
- Select the function *Create openings in beam systems* from the menu.

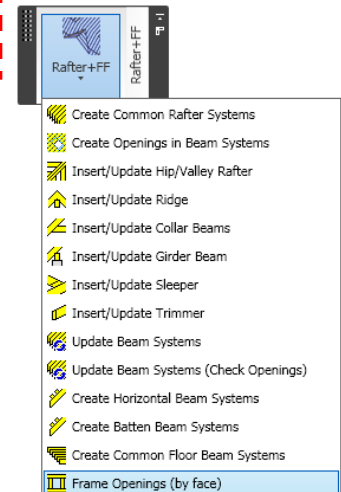
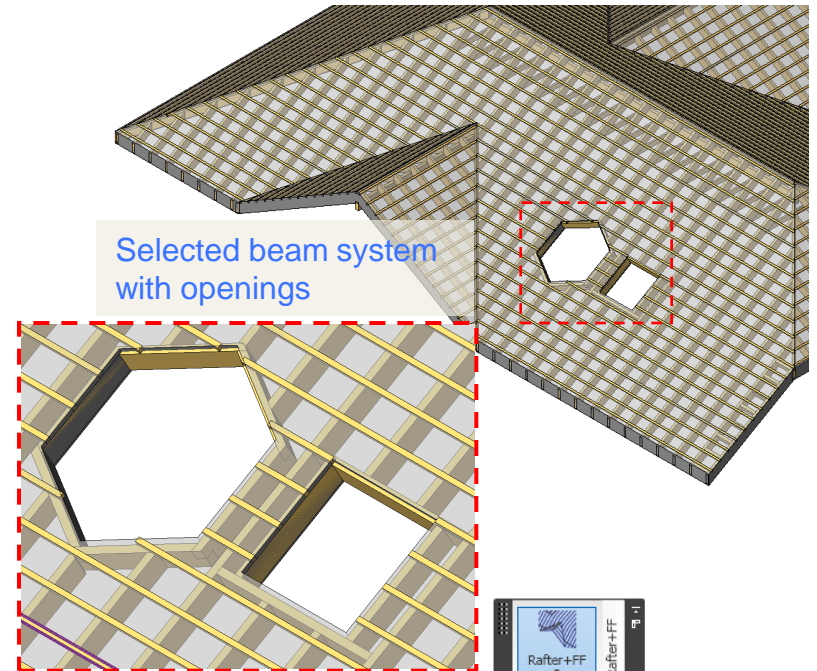


# Frame Openings in Batten Beam System

- Select Batten Beam Systems.
- Select the function *Frame openings (by face)* from the menu.
- After Framing is completed, select batten beam systems again and run the function *Update beam systems* to update joints and cuts.



Note that framing elements perpendicular to battens are automatically extended to the nearest batten beam.



# Increase your productivity !



AGA CAD Ltd.  
Zalgirio 112A, LT-09300 Vilnius,  
Lithuania  
Tel. +370 5 2398111  
Fax +370 5 2398113  
Email [info@aga-cad.lt](mailto:info@aga-cad.lt)  
[info@tools4revit.com](mailto:info@tools4revit.com)  
[www.tools4revit.com](http://www.tools4revit.com)