

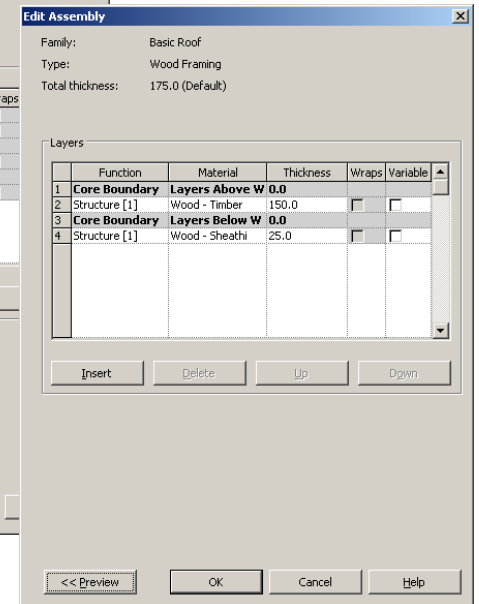
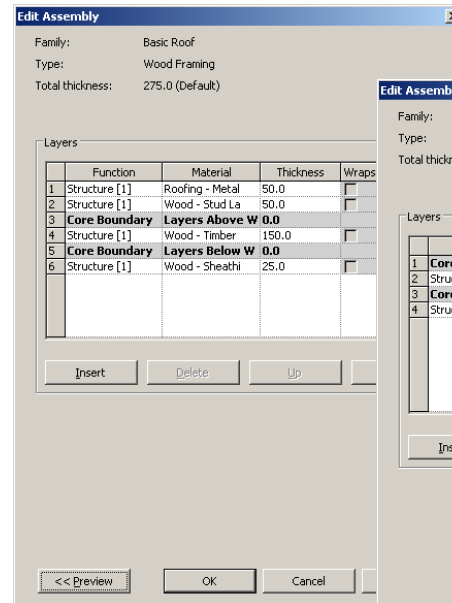
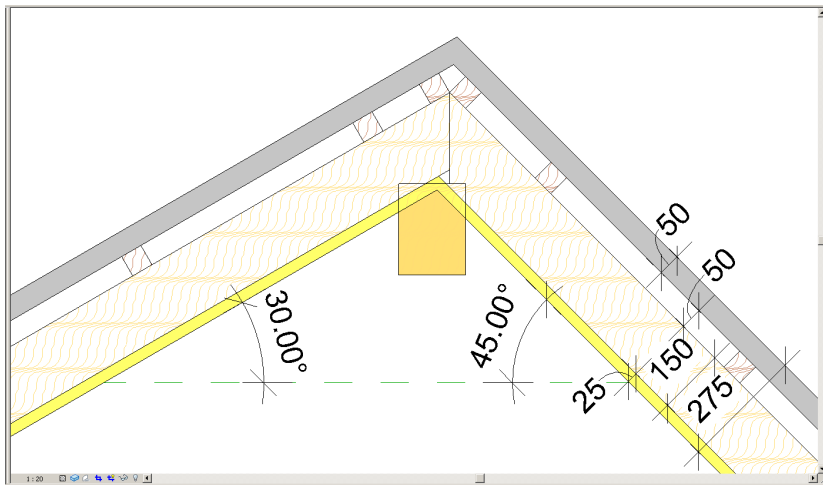
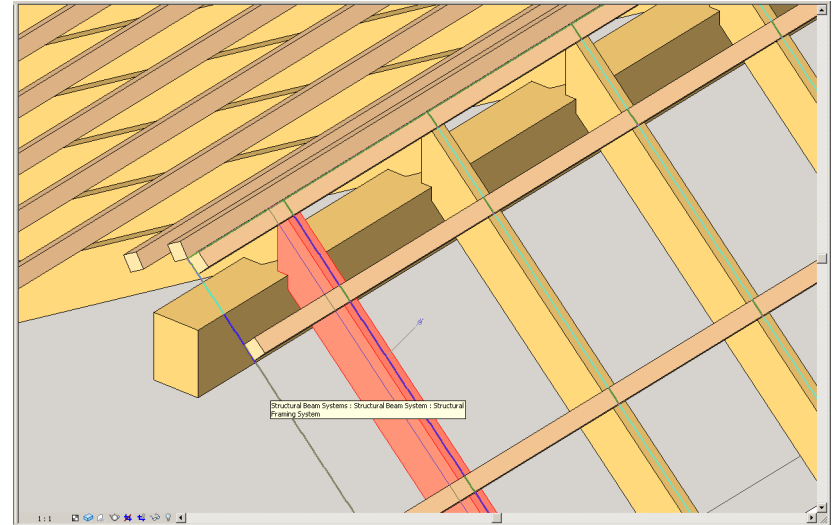


Create Horizontal Beam Systems Rafter+FF



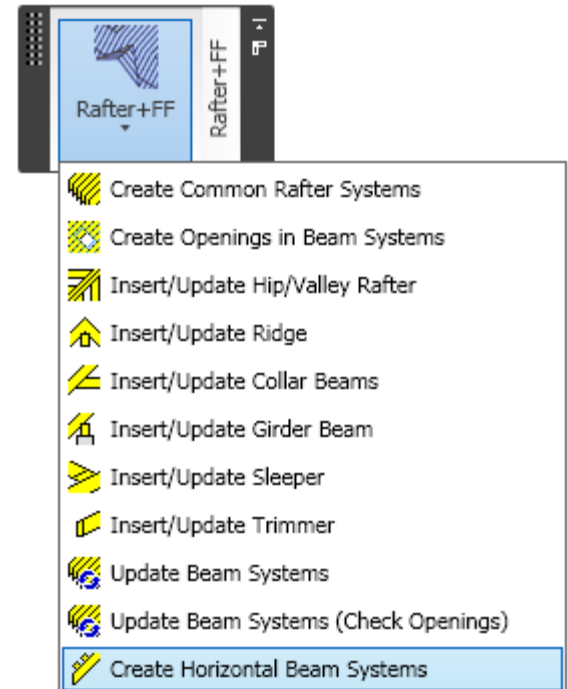
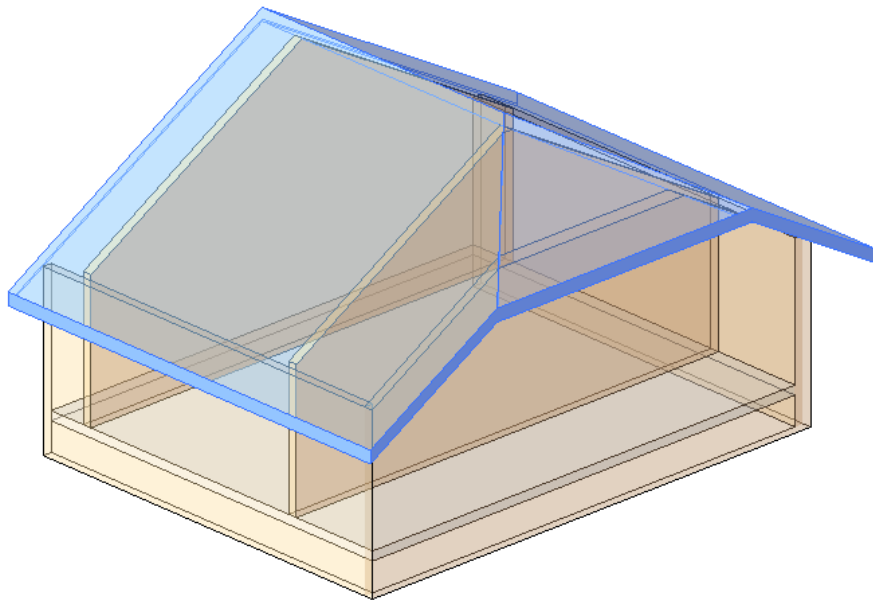
Before Proceeding

- Please, read carefully the topic “*Roof framing method - How to frame correctly layers of the wood roof*”.



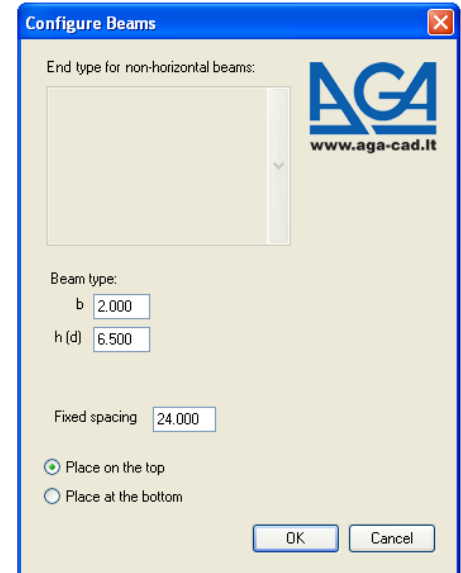
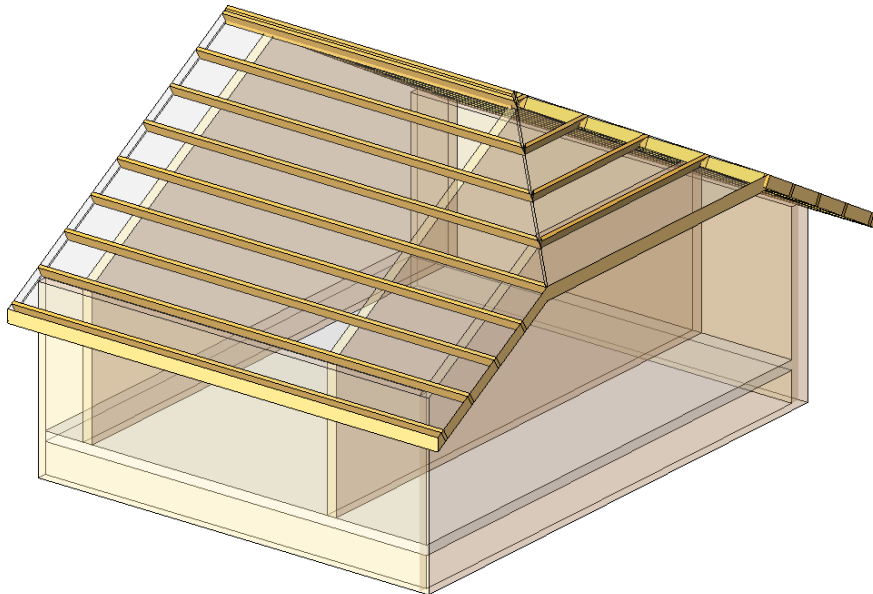
Create Horizontal Beam Systems

- Select a roof.
- Select *Create horizontal beam systems* from the menu.



Create Horizontal Beam Systems

- Provide dimensions of the beam cross section: *width - b* and *height – h* (*depth – d*).
- Enter the distance of *fixed spacing*.
- Select placement of beams. They can be placed *on the top* or *at the bottom* of the roof and click *OK*.



Increase your productivity !



AGA CAD Ltd.
Zalgirio 112A, LT-09300 Vilnius,
Lithuania
Tel. +370 5 2398111
Fax +370 5 2398113
Email info@aga-cad.lt
info@tools4revit.com
www.tools4revit.com