

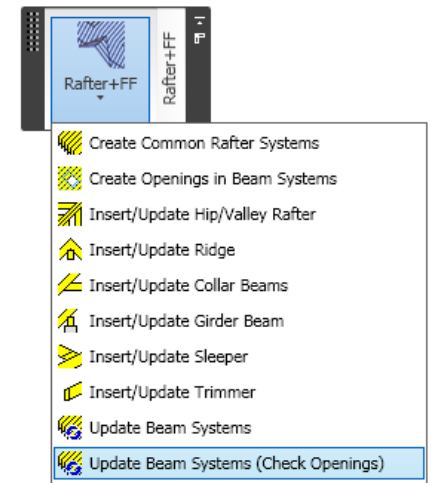
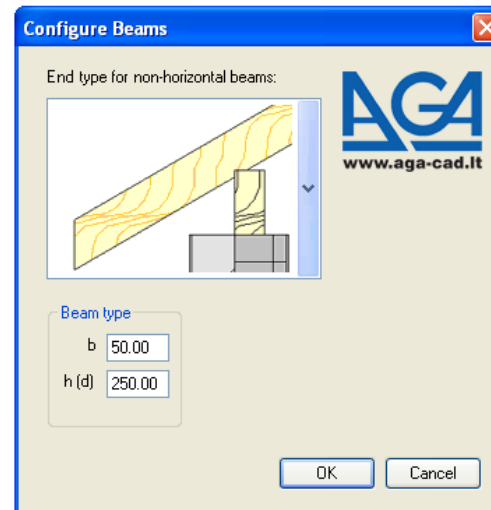
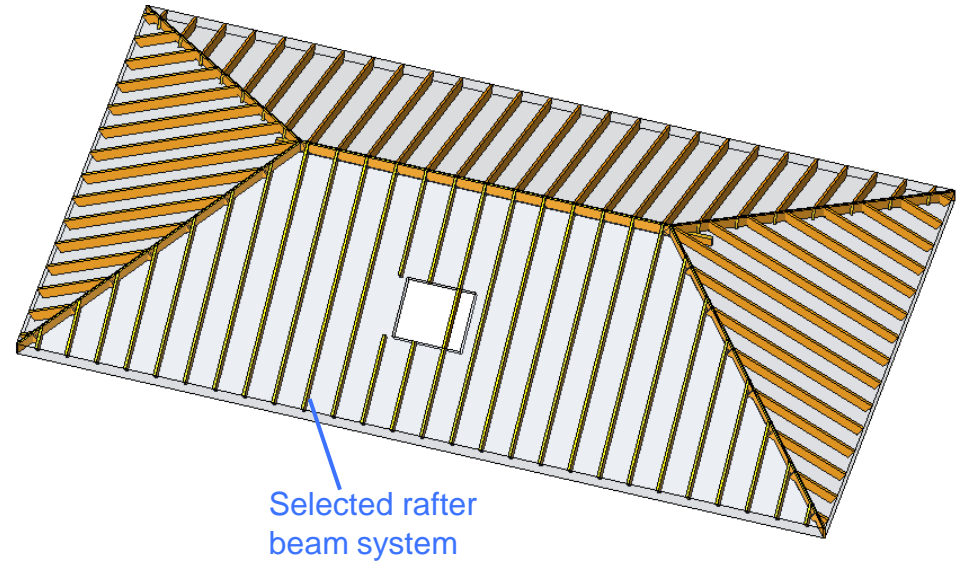


Update Beam Systems (check openings) Rafter+FF



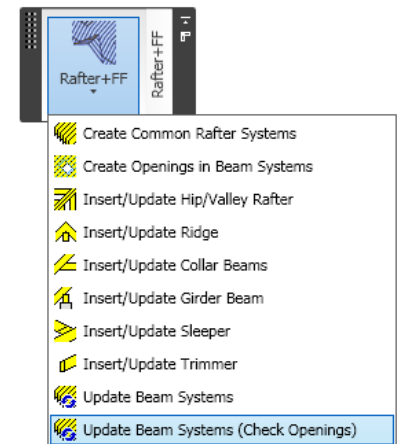
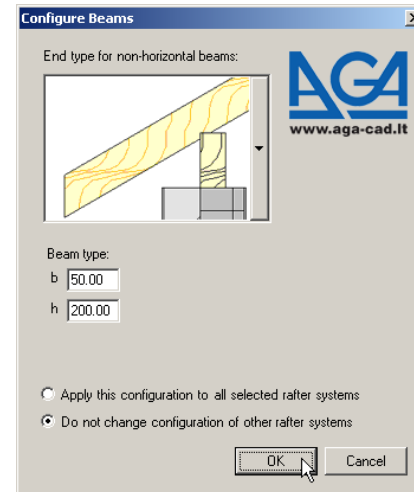
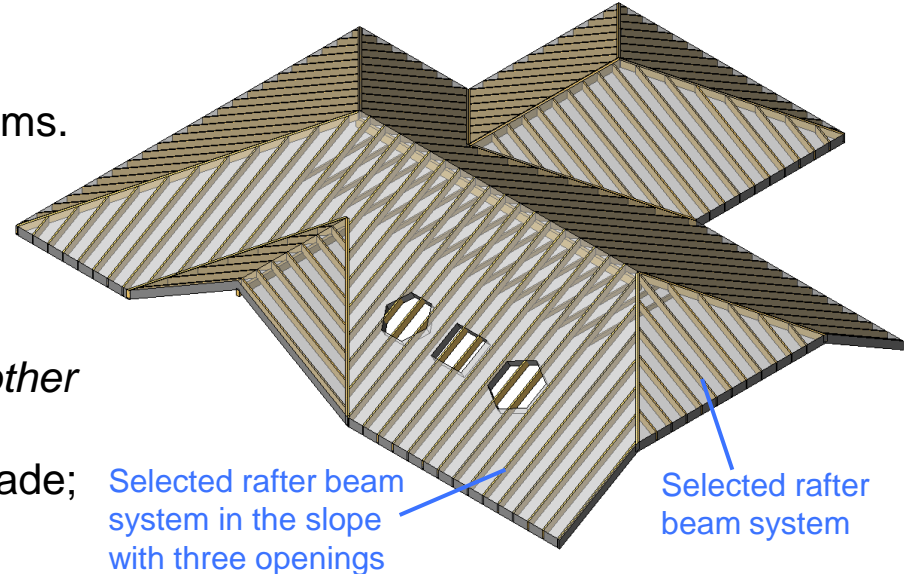
Update Beam Systems (check openings)

- Select a single beam system want to update.
- Select *Update beam systems (check openings)* from the menu.
- Modify an end type for non-horizontal beams if it is needed.
- Edit dimensions of the beam cross section (*width - b* and *height (depth) - h (d)*) if needed.
- Click *OK* to update the beam system.



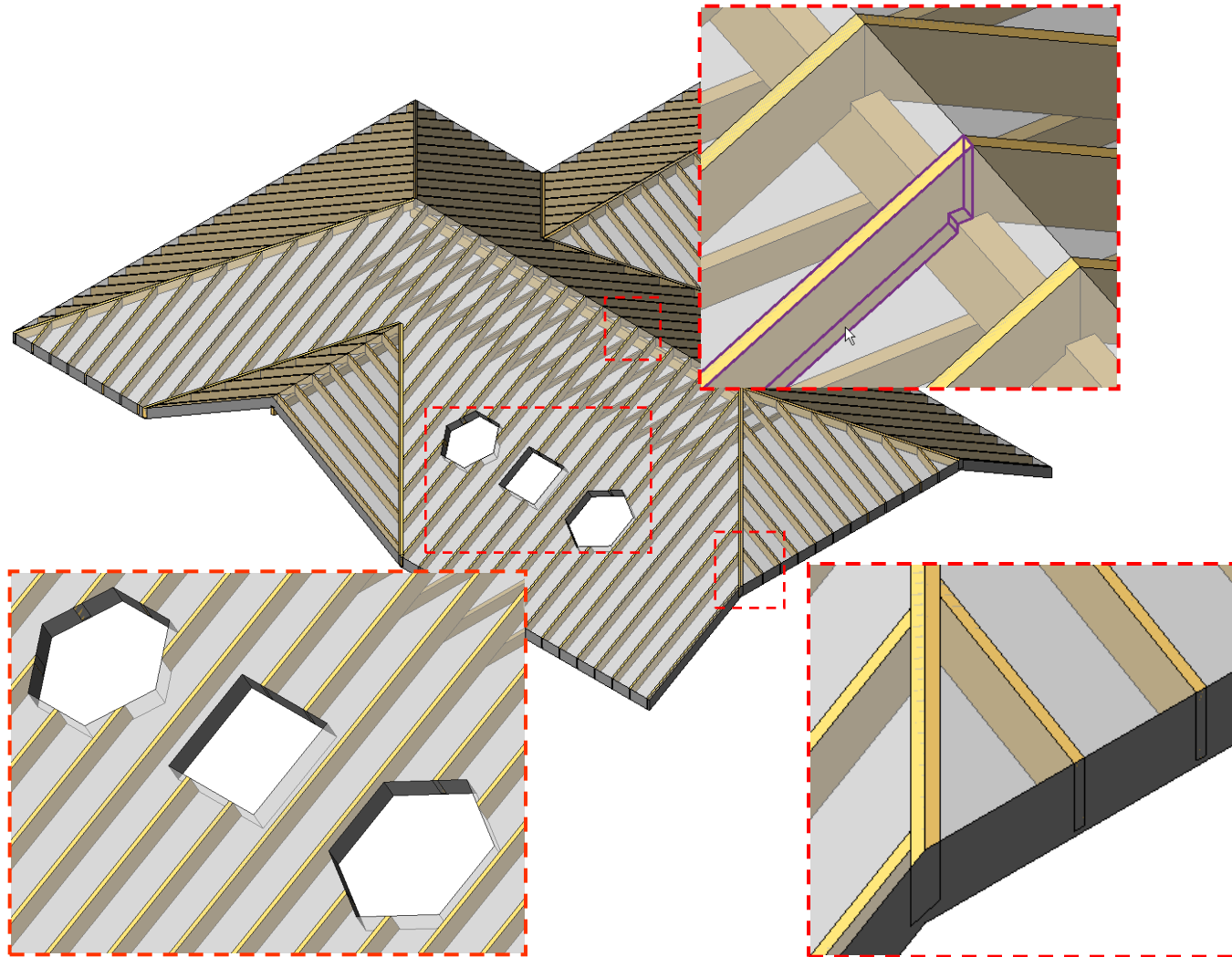
Update Beam Systems (check openings)

- Select multiple or all instances of beam systems.
- Select the function *Update beam systems (check openings)* from the menu.
- If the option *Do not change configuration of other rafter systems* is checked:
 - no change for beam dimensions are made;
 - joints and cuts are updated.
- If the option *Apply this configuration to all selected rafter systems* is checked:
 - end cut and cross section dimensions are updated;
 - joints and cuts are updated.
- The cut of the beam system is done according to opening top face boundary.



Update Beam Systems (check openings)

Result



Increase your productivity !



AGA CAD Ltd.
Zalgirio 112A, LT-09300 Vilnius,
Lithuania
Tel. +370 5 2398111
Fax +370 5 2398113
Email info@aga-cad.lt
info@tools4revit.com
www.tools4revit.com